

Commercial Cement Plaster 4™



Fiberglass Reinforced Portland Cement Plaster with
Backstop® NTX™ Air/Water-Resistive Barrier and
Fiberglass Reinforced Surface Impact Layer

DS827

Commercial Cement Plaster (CCP) 4 Installation Details

Table of Contents

Detail

CCP-4 CUTAWAY	CCP-4 1
OPENING PREPARATION- BACKSTOP® NTX / AQUAFLASH® SYSTEM	CCP-4 2
TERMINATION AT WOOD WINDOW	CCP-4 3
TERMINATION AT SELF FLASHING NAIL-ON WINDOW	CCP-4 4
TERMINATION AT STOREFRONT WINDOW-JAMB	CCP-4 5
TERMINATION AT STOREFRONT WINDOW-HEAD+SILL	CCP-4 6
TERMINATION AT STOREFRONT WINDOW SETBACK	CCP-4 7
TERMINATION AT CONCRETE FOUNDATION	CCP-4 8
OUTSIDE CORNER	CCP-4 9
INSIDE CORNER DETAIL	CCP-4 10
HORIZONTAL FLASHING AND EXPANSION JOINT	CCP-4 11
TERMINATION AT ROOF	CCP-4 12
PARAPET/WALL INTERSECTION	CCP-4 13
PARAPET FLASHING	CCP-4 14
SLOPED SILL	CCP-4 15
EPS CORNICE	CCP-4 16
CONTROL JOINT INTERSECTION	CCP-4 17
HORIZONTAL OR VERTICAL EXPANSION JOINT	CCP-4 18

NOTE:

DRYVIT MAKES NO REPRESENTATION REGARDING CONFORMITY OF ITS SUGGESTIONS TO MODEL BUILDING CODES, ENGINEERING CRITERIA, SPECIFIC APPLICATIONS, OR PROJECT LOCATIONS. ALL COMPONENTS INDICATED IN ILLUSTRATIONS, AS WELL AS OTHERS THAT MAY BE REQUIRED FOR THE INTEGRITY OF THE SYSTEM SHALL BE DESIGNED, DETAILED, AND ENGINEERED BY REPRESENTATIVES OF THE ARCHITECT, OWNER, OR CONTRACTOR TO BE IN CONFORMANCE WITH MODEL CODES, ARCHITECTURAL, AND ENGINEERING REQUIREMENTS PERTAINING TO SPECIFIC BUILDING PROJECTS.

DRYVIT MAKES NO WARRANTY, EXPRESSED OR IMPLIED, AS TO THE ARCHITECTURAL DESIGN, ENGINEERING, OR WORKMANSHIP OF PROJECTS UTILIZING DRYVIT SYSTEMS OR PRODUCTS.

THE LIABILITIES OF DRYVIT SHALL BE AS STATED IN THE DRYVIT STANDARD WARRANTY. CONTACT DRYVIT FOR A FULL AND COMPLETE COPY OF THE WARRANTY.

The architecture, engineering, and design of the project using the Dryvit products are the responsibility of the project's design professional. All products and systems must comply with local building codes and standards. This detail is for general information and guidance only and Dryvit specifically disclaims any liability for the use of this detail. The project design professional determines, in its sole discretion, whether this detail or a functionally equivalent detail is best suited for the project. This detail is subject to change without notice. Contact Dryvit to ensure you have the most recent version.

Commercial Cement Plaster 4™



Dryvit Technical Support: 800-556-7752

Detail: Table of Contents

Drawn by: KAB

Checked by:

Scale: NTS

Date: 5/2023

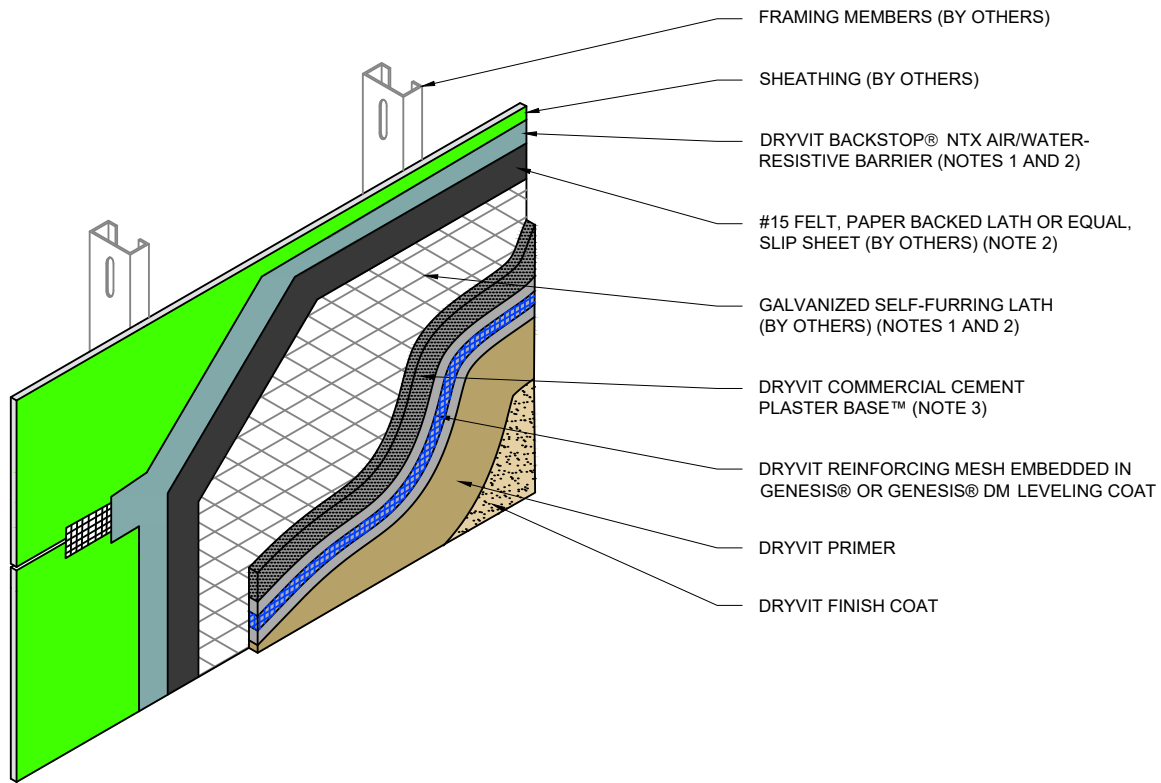
File Name:

CCP-4 TOC



Construction Products Group

www.tremcocp4.com



**SHEATHED FRAMING
SUBSTRATE**

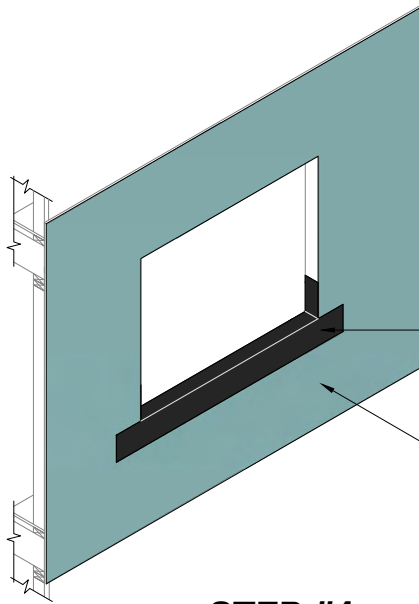
NOTE:

1. BACKSTOP® NTX AIR/WATER-RESISTIVE BARRIER REQUIRES USE OF A SLIP SHEET LAYER SUCH AS #15 FELT OR PAPER BACKED LATH WHEN SPECIFIED.
2. OTHER APPROVED SCRATCH AND BROWN COATS MAY BE ACCEPTABLE. CONSULT DRYVIT FOR SPECIFICS.

The architecture, engineering, and design of the project using the Dryvit products are the responsibility of the project's design professional. All products and systems must comply with local building codes and standards. This detail is for general information and guidance only and Dryvit specifically disclaims any liability for the use of this detail. The project design professional determines, in its sole discretion, whether this detail or a functionally equivalent detail is best suited for the project. This detail is subject to change without notice. Contact Dryvit to ensure you have the most recent version.

Commercial Cement Plaster 4™

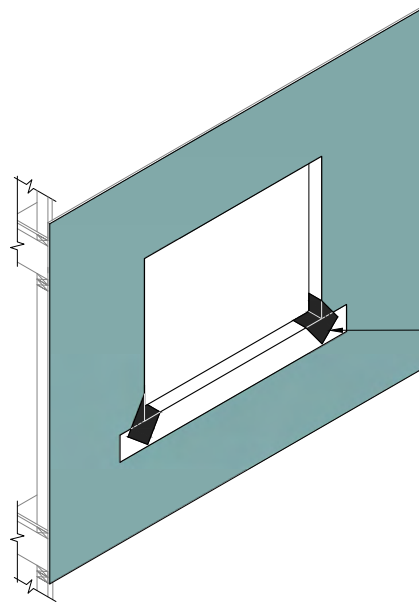
 Dryvit Technical Support: 800-556-7752	Detail: CCP-4 CUTAWAY			File Name:		 Construction Products Group
	Drawn by: KAB	Checked by:	Scale: NTS	Date: 5/2023	CCP-4 1	
www.tremcocpg.com						



APPLY DRYVIT AQUAFLASH® SYSTEM (NOTES 1 AND 3)

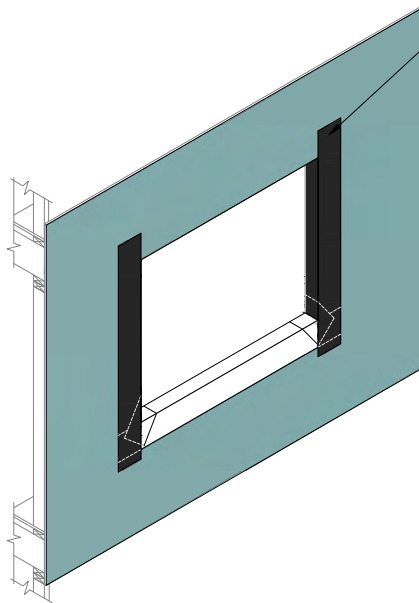
DRYVIT BACKSTOP® NTX AIR/WATER-RESISTIVE BARRIER COATING

STEP #1



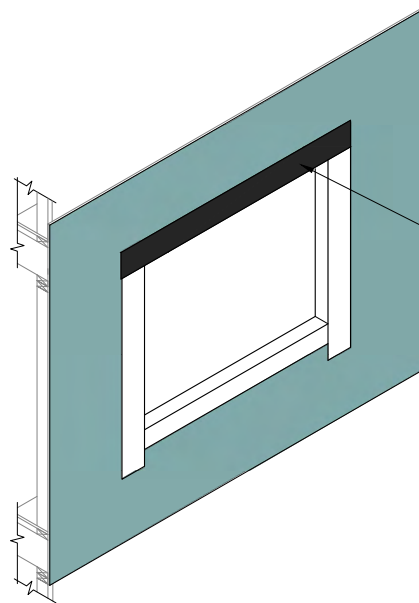
INSTALL DIAGONAL STRIP OF DRYVIT AQUAFLASH® MESH AND AQUAFLASH® AT CORNERS (NOTES 1 AND 3)

STEP #2



INSTALL DRYVIT AQUAFLASH® SYSTEM AT JAMBS (NOTES 1 AND 3)

STEP #3



INSTALL DRYVIT AQUAFLASH® SYSTEM AT HEADS (NOTES 1, 2, AND 3)

STEP #4

NOTE:

1. DRYVIT AQUAFLASH® SHALL EXTEND TO INTERIOR FACE OF OPENING.
2. REFER TO HEAD, SILL AND JAMB DETAILS FOR FLASHING INTEGRATION.
3. INSTALL WINDOW UNIT AND ASSOCIATED FLASHINGS PER MANUFACTURER'S RECOMMENDATIONS, CODE REQUIREMENTS AND PROJECT DOCUMENTS.

The architecture, engineering, and design of the project using the Dryvit products are the responsibility of the project's design professional. All products and systems must comply with local building codes and standards. This detail is for general information and guidance only and Dryvit specifically disclaims any liability for the use of this detail. The project design professional determines, in its sole discretion, whether this detail or a functionally equivalent detail is best suited for the project. This detail is subject to change without notice. Contact Dryvit to ensure you have the most recent version.

Commercial Cement Plaster 4™



Dryvit Technical Support: 800-556-7752

Detail: Opening Preparation Backstop® NTX / AquaFlash® System

Drawn by: KAB

Checked by:

Scale: NTS

Date: 5/2023

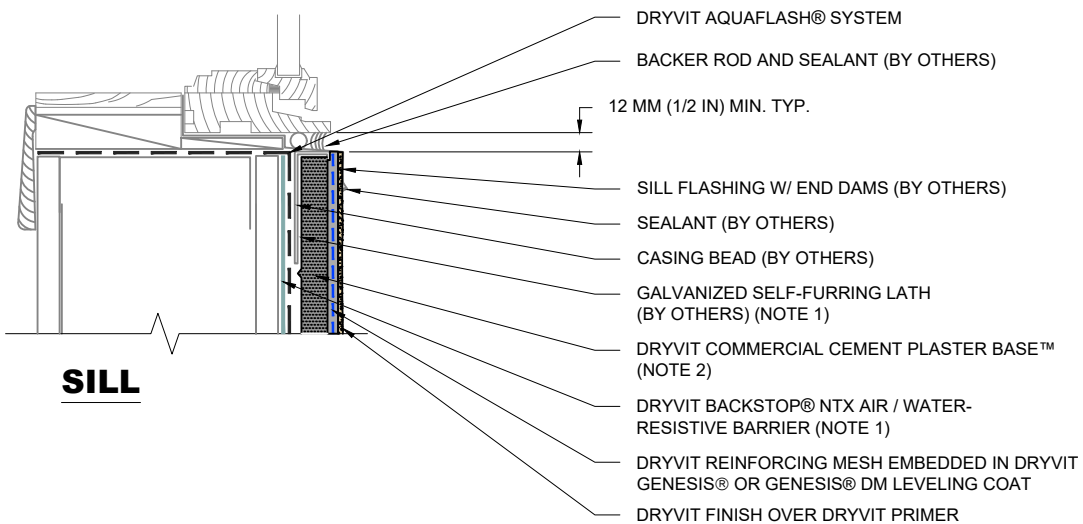
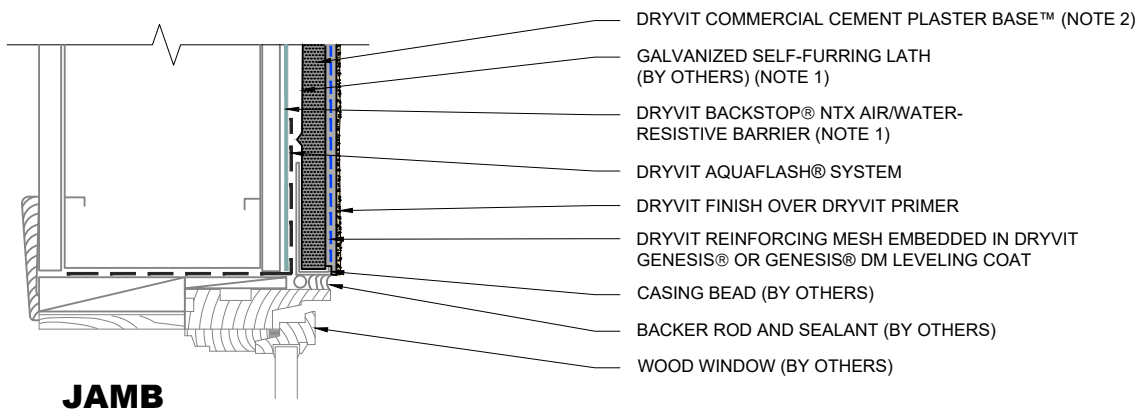
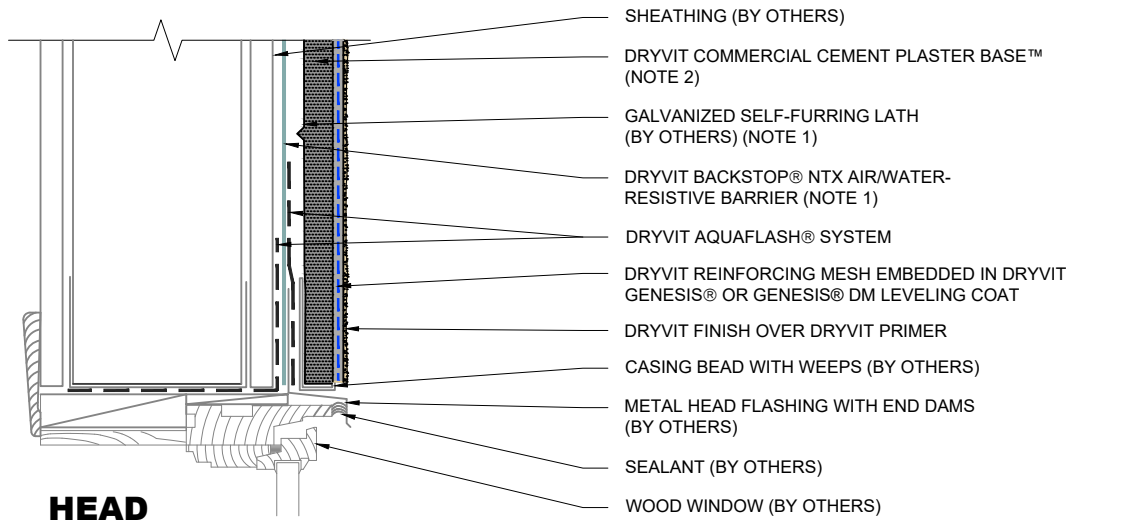
File Name:

CCP-4 2



Construction Products Group

www.tremcocpg.com



NOTE:

1. BACKSTOP® NTX AIR/WATER-RESISTIVE BARRIER REQUIRES USE OF A SLIP SHEET LAYER SUCH AS #15 FELT OR PAPER BACKED LATH WHEN SPECIFIED.
2. OTHER APPROVED SCRATCH AND BROWN COATS MAY BE ACCEPTABLE. CONSULT DRYVIT FOR SPECIFICS.

The architecture, engineering, and design of the project using the Dryvit products are the responsibility of the project's design professional. All products and systems must comply with local building codes and standards. This detail is for general information and guidance only and Dryvit specifically disclaims any liability for the use of this detail. The project design professional determines, in its sole discretion, whether this detail or a functionally equivalent detail is best suited for the project. This detail is subject to change without notice. Contact Dryvit to ensure you have the most recent version.

Commercial Cement Plaster 4™



Dryvit Technical Support: 800-556-7752

Detail: Termination at Wood Window

Drawn by: KAB

Checked by:

Scale: NTS

Date: 5/2023

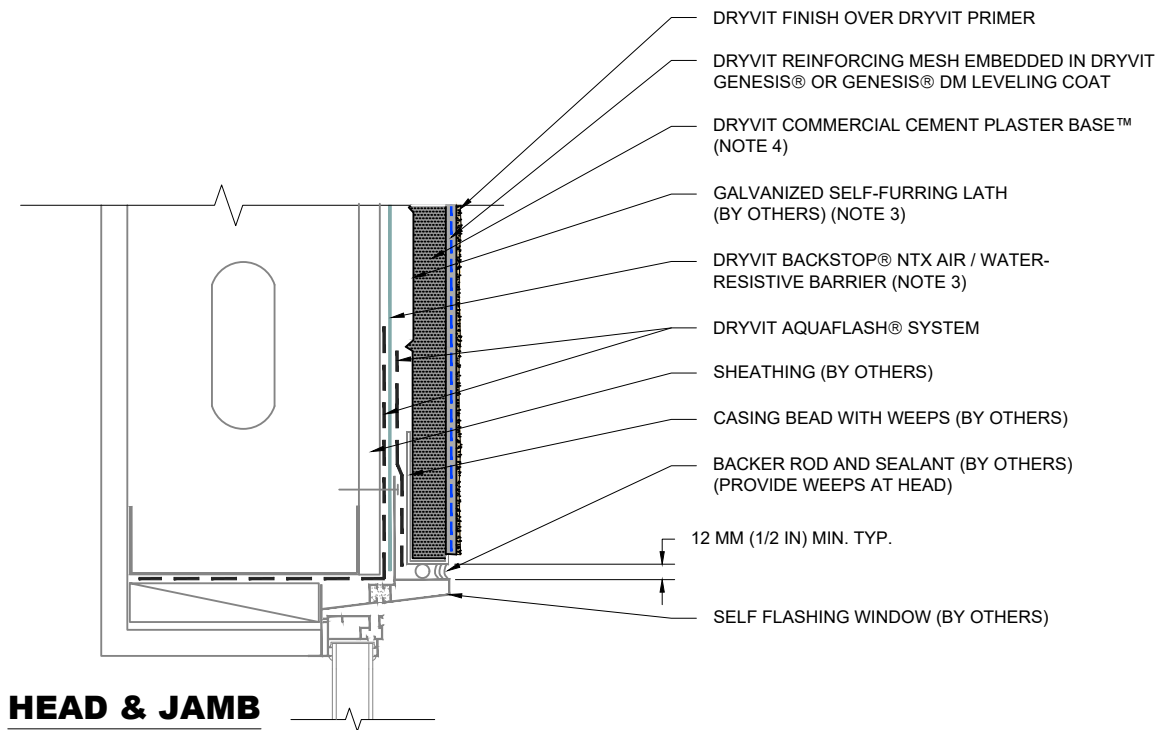
File Name:

CCP-4 3

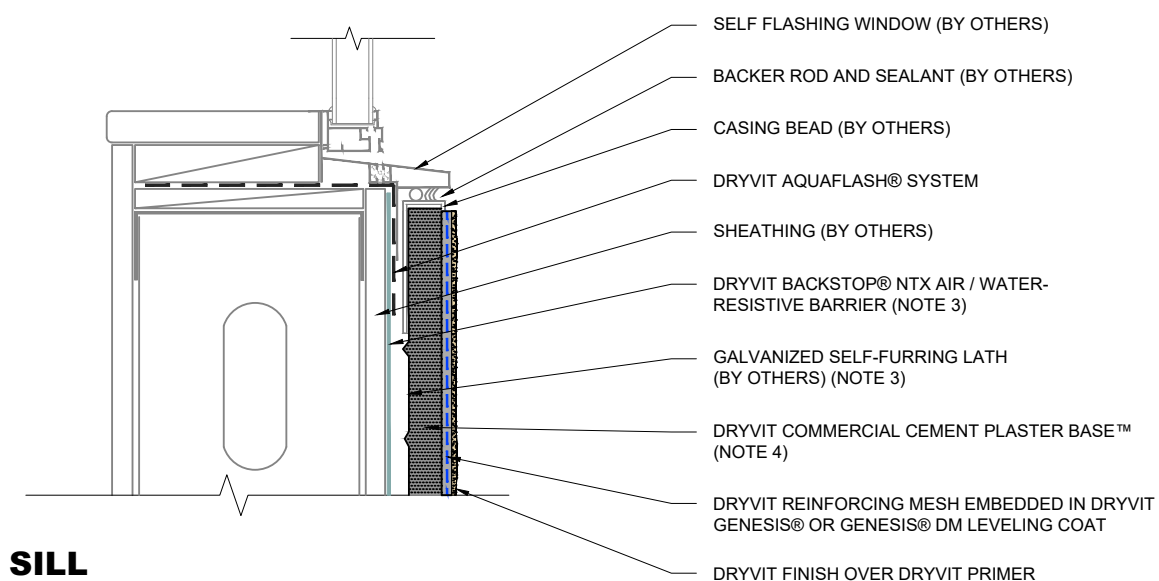


Construction Products Group

www.tremcocpg.com



HEAD & JAMB





SILL

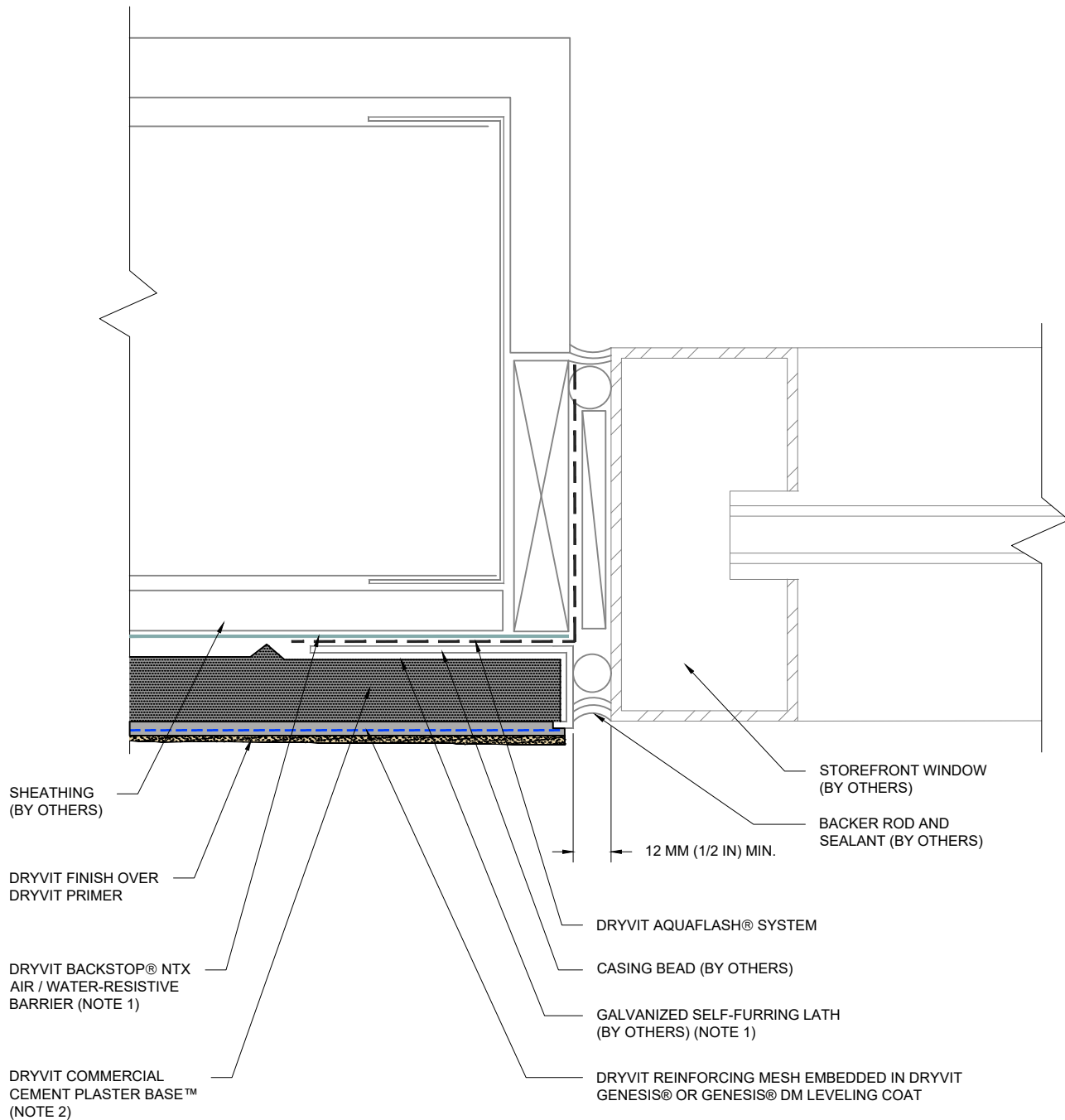
NOTE:

1. ALTERNATE DETAIL AT WINDOW HEAD WOULD INCLUDE METAL FLASHING WITH END DAMS.
2. ADDITIONAL FLASHING MAY BE REQUIRED FOR WINDOWS THAT ARE NOT SELF FLASHING.
3. BACKSTOP® NTX AIR/WATER-RESISTIVE BARRIER REQUIRES USE OF A SLIP SHEET LAYER SUCH AS #15 FELT OR PAPER BACKED LATH.
4. OTHER APPROVED SCRATCH AND BROWN COATS MAY BE ACCEPTABLE. CONSULT DRYVIT FOR SPECIFICS.

The architecture, engineering, and design of the project using the Dryvit products are the responsibility of the project's design professional. All products and systems must comply with local building codes and standards. This detail is for general information and guidance only and Dryvit specifically disclaims any liability for the use of this detail. The project design professional determines, in its sole discretion, whether this detail or a functionally equivalent detail is best suited for the project. This detail is subject to change without notice. Contact Dryvit to ensure you have the most recent version.

Commercial Cement Plaster 4™

	Detail: Termination at Self Flashing Nail-On Window				File Name:		
	Drawn by: KAB	Checked by:	Scale: NTS	Date: 5/2023	CCP-4 4		
Dryvit Technical Support: 800-556-7752 www.tremcocpg.com							



SHEATHING
(BY OTHERS)

DRYVIT FINISH OVER
DRYVIT PRIMER

DRYVIT BACKSTOP® NTX
AIR / WATER-RESISTIVE
BARRIER (NOTE 1)

DRYVIT COMMERCIAL
CEMENT PLASTER BASE™
(NOTE 2)

DRYVIT AQUAFASH® SYSTEM

CASING BEAD (BY OTHERS)

GALVANIZED SELF-FURRING LATH
(BY OTHERS) (NOTE 1)

DRYVIT REINFORCING MESH EMBEDDED IN DRYVIT
GENESIS® OR GENESIS® DM LEVELING COAT

STOREFRONT WINDOW
(BY OTHERS)

BACKER ROD AND
SEALANT (BY OTHERS)

12 MM (1/2 IN) MIN.

NOTE:

1. BACKSTOP® NTX AIR/WATER-RESISTIVE BARRIER REQUIRES USE OF A SLIP SHEET LAYER SUCH AS #15 FELT OR PAPER BACKED LATH WHEN SPECIFIED.
2. OTHER APPROVED SCRATCH AND BROWN COATS MAY BE ACCEPTABLE. CONSULT DRYVIT FOR SPECIFICS.

The architecture, engineering, and design of the project using the Dryvit products are the responsibility of the project's design professional. All products and systems must comply with local building codes and standards. This detail is for general information and guidance only and Dryvit specifically disclaims any liability for the use of this detail. The project design professional determines, in its sole discretion, whether this detail or a functionally equivalent detail is best suited for the project. This detail is subject to change without notice. Contact Dryvit to ensure you have the most recent version.

Commercial Cement Plaster 4™



Dryvit Technical Support: 800-556-7752

Detail: Termination at Storefront Window-Jamb

Drawn by: KAB

Checked by:

Scale: NTS

Date: 5/2023

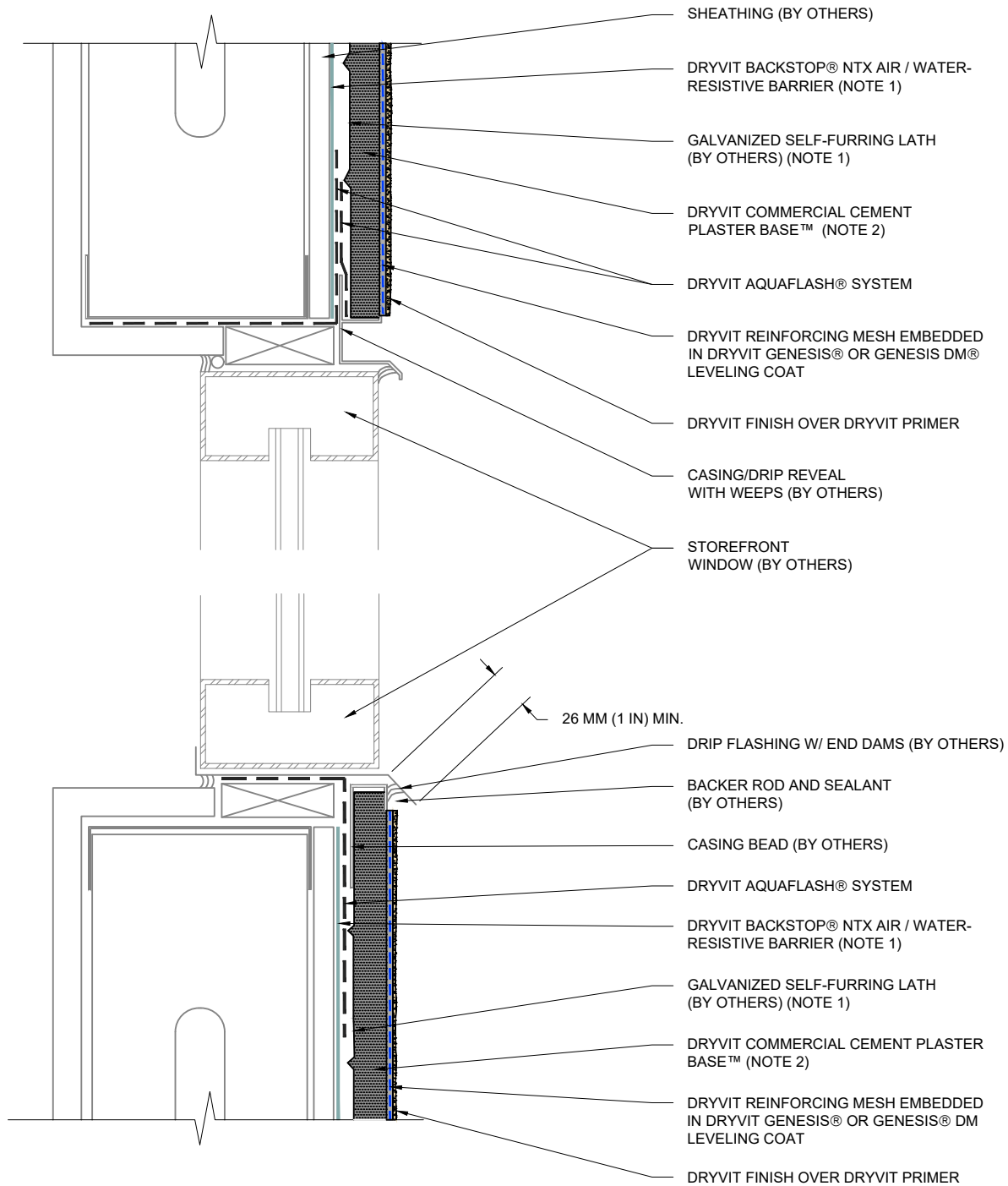
File Name:

CCP-4 5



Construction Products Group

www.tremcocpg.com



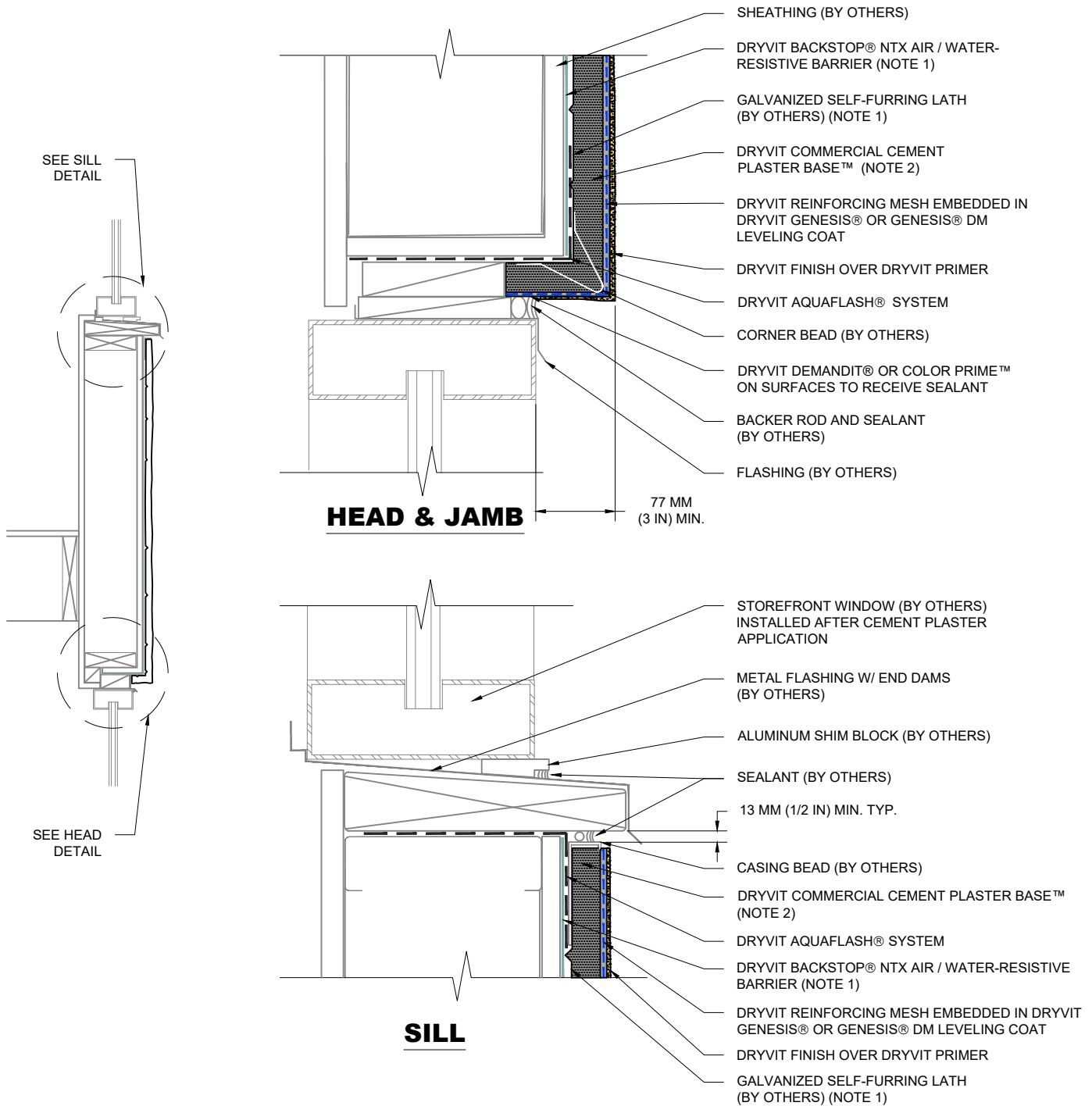
NOTE:

1. BACKSTOP® NTX AIR/WATER-RESISTIVE BARRIER REQUIRES USE OF A SLIP SHEET LAYER SUCH AS #15 FELT OR PAPER BACKED LATH WHEN SPECIFIED.
2. OTHER APPROVED SCRATCH AND BROWN COATS MAY BE ACCEPTABLE. CONSULT DRYVIT FOR SPECIFICS.

The architecture, engineering, and design of the project using the Dryvit products are the responsibility of the project's design professional. All products and systems must comply with local building codes and standards. This detail is for general information and guidance only and Dryvit specifically disclaims any liability for the use of this detail. The project design professional determines, in its sole discretion, whether this detail or a functionally equivalent detail is best suited for the project. This detail is subject to change without notice. Contact Dryvit to ensure you have the most recent version.

Commercial Cement Plaster 4™

 Dryvit Technical Support: 800-556-7752	Detail: Termination at Storefront Window-Head+Sill			File Name:		 Construction Products Group
	Drawn by: KAB	Checked by:	Scale: NTS	Date: 5/2023	CCP-4 6	
www.tremcocpg.com						



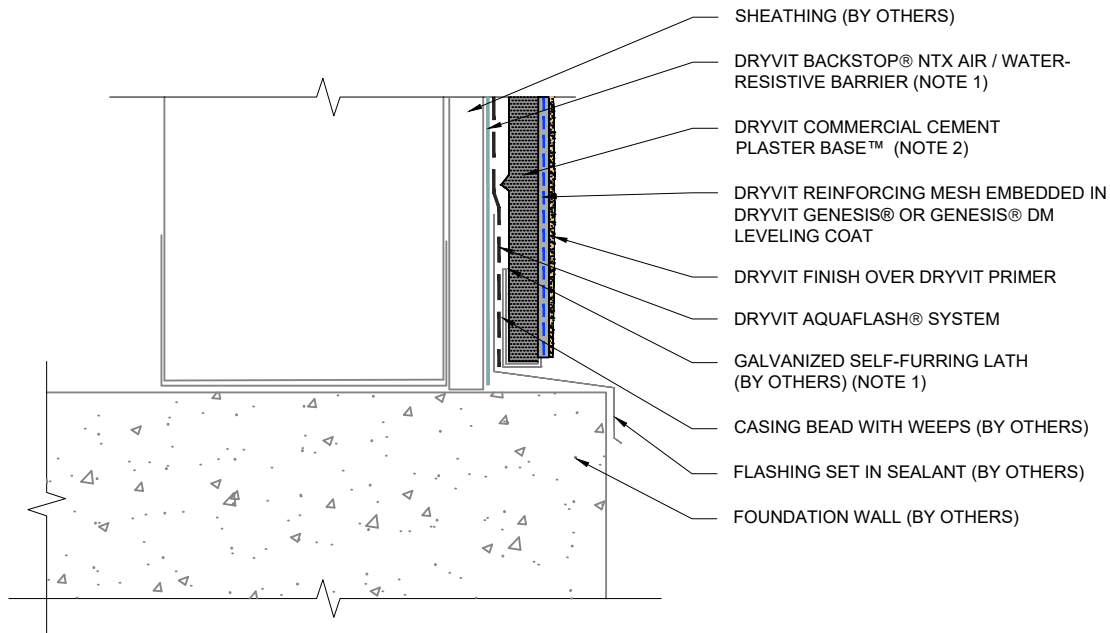
NOTE:

1. BACKSTOP® NTX AIR/WATER-RESISTIVE BARRIER REQUIRES USE OF A SLIP SHEET LAYER SUCH AS #15 FELT OR PAPER BACKED LATH WHEN SPECIFIED.
2. OTHER APPROVED SCRATCH AND BROWN COATS MAY BE ACCEPTABLE. CONSULT DRYVIT FOR SPECIFICS.

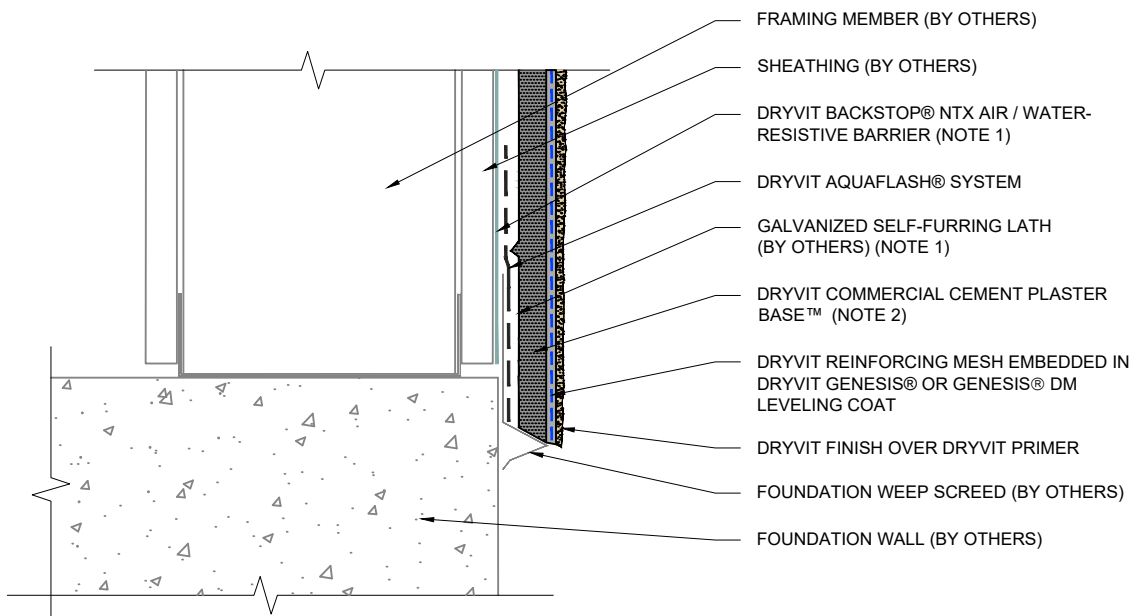
The architecture, engineering, and design of the project using the Dryvit products are the responsibility of the project's design professional. All products and systems must comply with local building codes and standards. This detail is for general information and guidance only and Dryvit specifically disclaims any liability for the use of this detail. The project design professional determines, in its sole discretion, whether this detail or a functionally equivalent detail is best suited for the project. This detail is subject to change without notice. Contact Dryvit to ensure you have the most recent version.

Commercial Cement Plaster 4™

 Dryvit Technical Support: 800-556-7752	Detail: Termination at Storefront Window Setback			File Name:		 TREMCO Construction Products Group
	Drawn by: KAB	Checked by:	Scale: NTS	Date: 5/2023	CCP-4 7	
www.tremcocpg.com						



CASING BEAD AT CONCRETE FOUNDATION



WEEP SCREED AT CONCRETE FOUNDATION

NOTE:

1. BACKSTOP® NTX AIR/WATER-RESISTIVE BARRIER REQUIRES USE OF A SLIP SHEET LAYER SUCH AS #15 FELT OR PAPER BACKED LATH WHEN SPECIFIED.
2. OTHER APPROVED SCRATCH AND BROWN COATS MAY BE ACCEPTABLE. CONSULT DRYVIT FOR SPECIFICS.

The architecture, engineering, and design of the project using the Dryvit products are the responsibility of the project's design professional. All products and systems must comply with local building codes and standards. This detail is for general information and guidance only and Dryvit specifically disclaims any liability for the use of this detail. The project design professional determines, in its sole discretion, whether this detail or a functionally equivalent detail is best suited for the project. This detail is subject to change without notice. Contact Dryvit to ensure you have the most recent version.

Commercial Cement Plaster 4™



Dryvit Technical Support: 800-556-7752

Detail: Termination at Concrete Foundation

Drawn by: KAB

Checked by:

Scale: NTS

Date: 5/2023

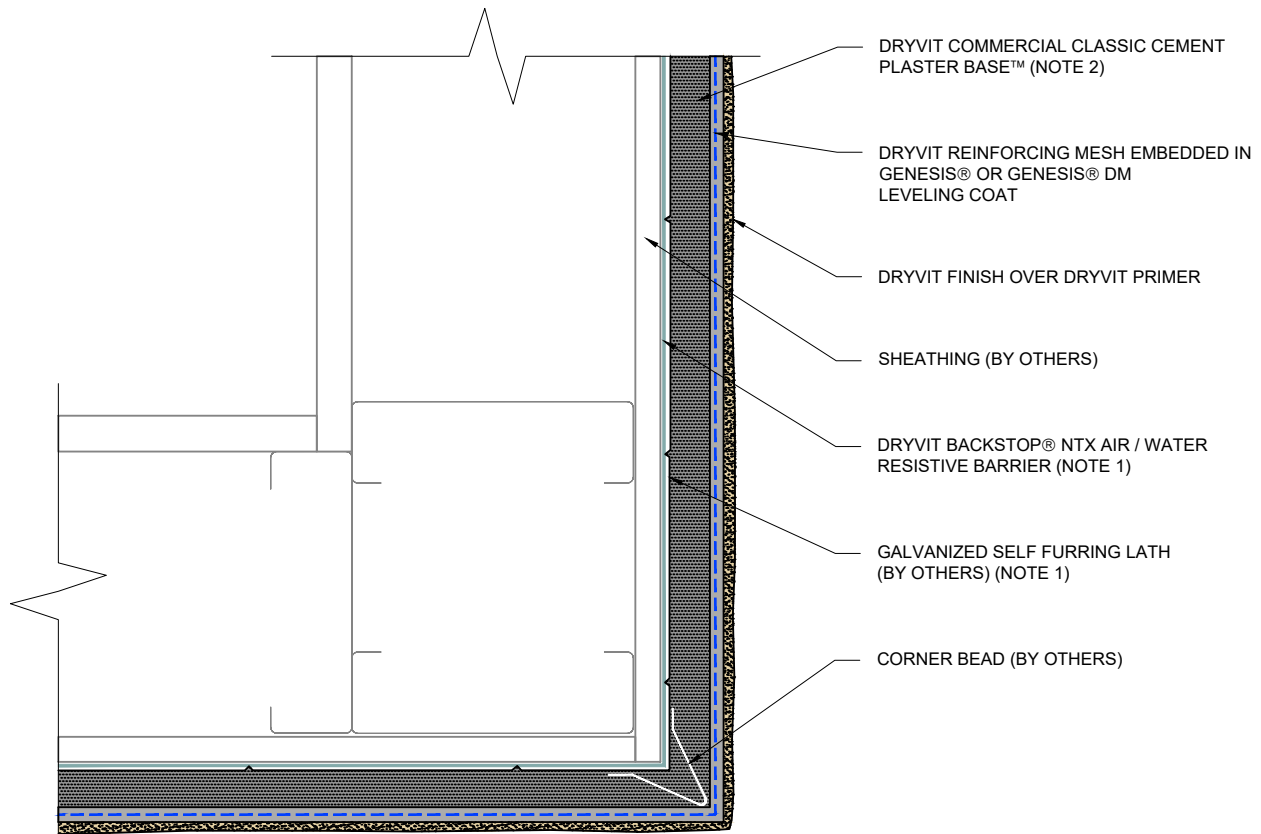
File Name:

CCP-4 8



Construction Products Group

www.tremcocpg.com



DRYVIT COMMERCIAL CLASSIC CEMENT PLASTER BASE™ (NOTE 2)

DRYVIT REINFORCING MESH EMBEDDED IN GENESIS® OR GENESIS® DM LEVELING COAT

DRYVIT FINISH OVER DRYVIT PRIMER

SHEATHING (BY OTHERS)

DRYVIT BACKSTOP® NTX AIR / WATER RESISTIVE BARRIER (NOTE 1)

GALVANIZED SELF FURRING LATH (BY OTHERS) (NOTE 1)

CORNER BEAD (BY OTHERS)

NOTE:

1. BACKSTOP® NTX AIR/WATER-RESISTIVE BARRIER REQUIRES USE OF A SLIP SHEET LAYER SUCH AS #15 FELT OR PAPER BACKED LATH WHEN SPECIFIED.
2. OTHER APPROVED SCRATCH AND BROWN COATS MAY BE ACCEPTABLE. CONSULT DRYVIT FOR SPECIFICS.

The architecture, engineering, and design of the project using the Dryvit products are the responsibility of the project's design professional. All products and systems must comply with local building codes and standards. This detail is for general information and guidance only and Dryvit specifically disclaims any liability for the use of this detail. The project design professional determines, in its sole discretion, whether this detail or a functionally equivalent detail is best suited for the project. This detail is subject to change without notice. Contact Dryvit to ensure you have the most recent version.

Commercial Cement Plaster 4™



Dryvit Technical Support: 800-556-7752

Detail: Outside Corner

Drawn by: KAB

Checked by:

Scale: NTS

Date: 5/2023

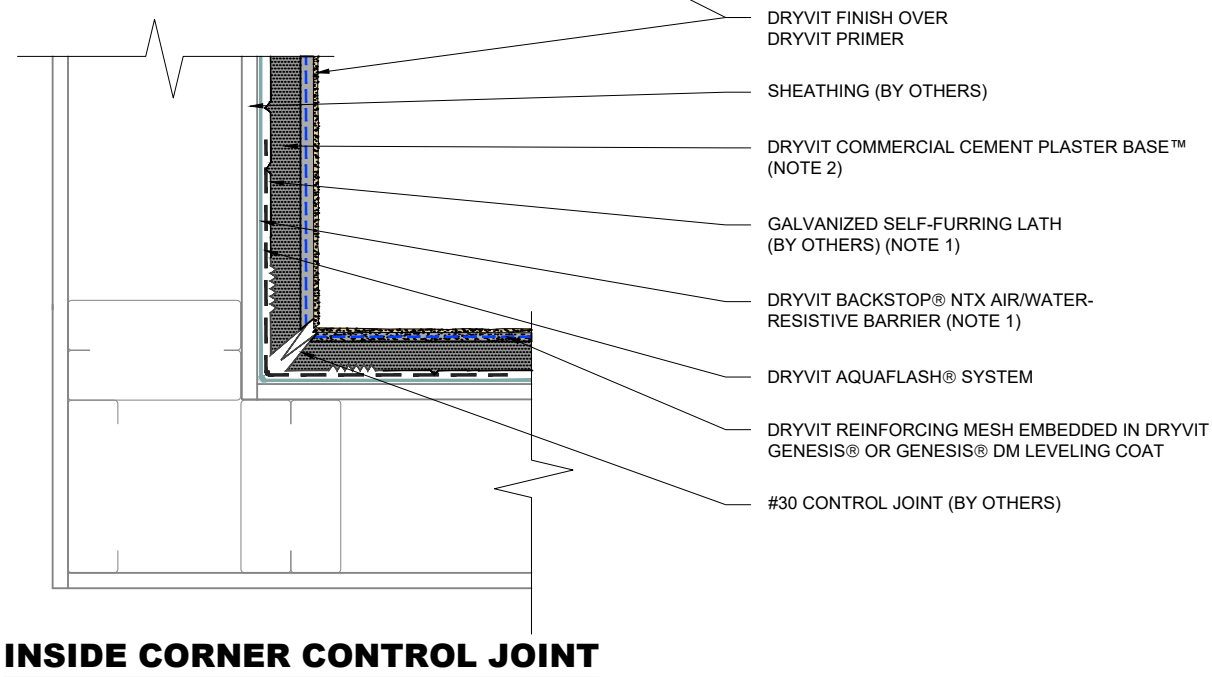
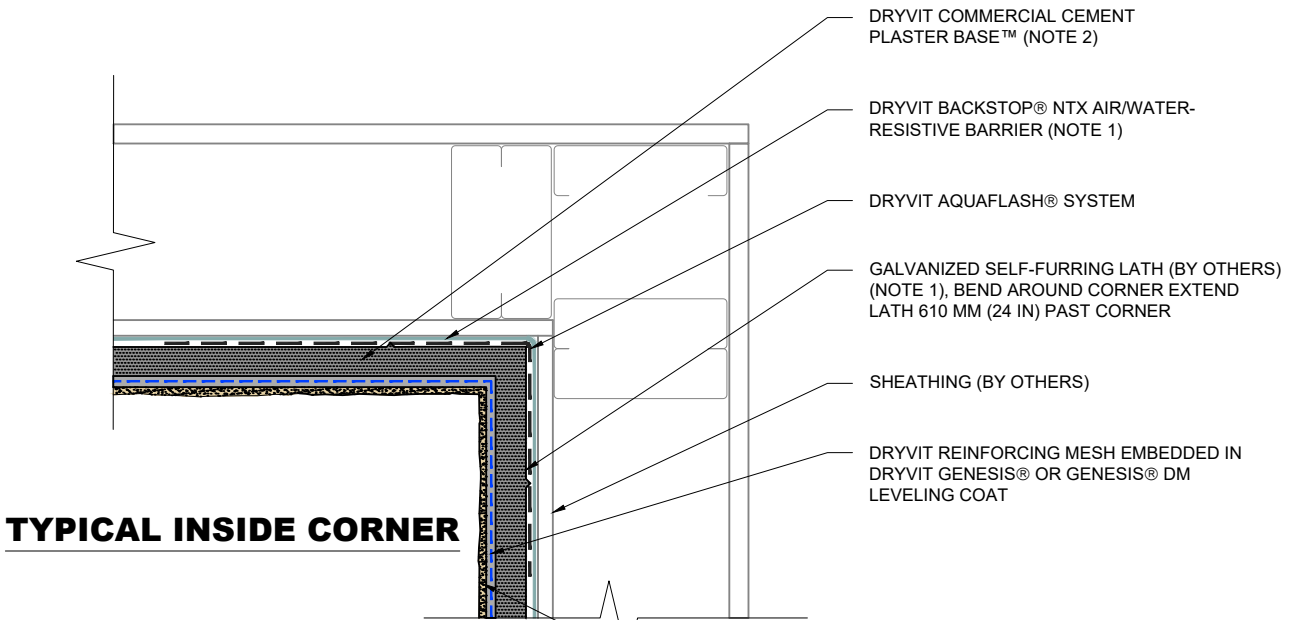
File Name:

CCP-4 9



Construction Products Group

www.tremcocpg.com



NOTE:

- BACKSTOP® NTX AIR/WATER-RESISTIVE BARRIER REQUIRES USE OF A SLIP SHEET LAYER SUCH AS #15 FELT OR PAPER BACKED LATH WHEN SPECIFIED.
- OTHER APPROVED SCRATCH AND BROWN COATS MAY BE ACCEPTABLE. CONSULT DRYVIT FOR SPECIFICS.

The architecture, engineering, and design of the project using the Dryvit products are the responsibility of the project's design professional. All products and systems must comply with local building codes and standards. This detail is for general information and guidance only and Dryvit specifically disclaims any liability for the use of this detail. The project design professional determines, in its sole discretion, whether this detail or a functionally equivalent detail is best suited for the project. This detail is subject to change without notice. Contact Dryvit to ensure you have the most recent version.

Commercial Cement Plaster 4™



Dryvit Technical Support: 800-556-7752

Detail: Inside Corner Detail

Drawn by: KAB

Checked by:

Scale: NTS

Date: 5/2023

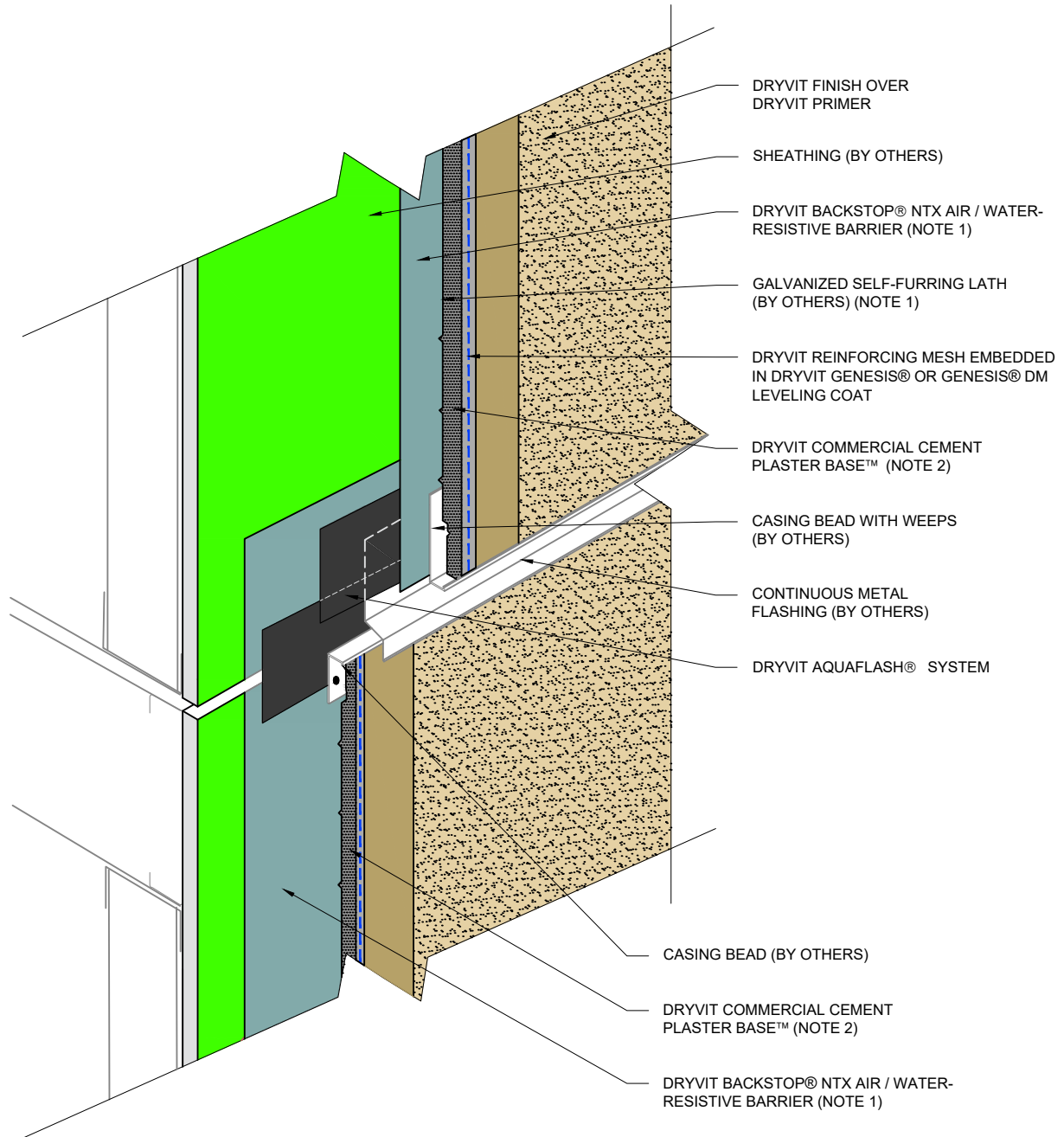
File Name:

CCP-4 10



Construction Products Group

www.tremcocpg.com



NOTE:

1. BACKSTOP® NTX AIR/WATER-RESISTIVE BARRIER REQUIRES USE OF A SLIP SHEET LAYER SUCH AS #15 FELT OR PAPER BACKED LATH WHEN SPECIFIED.
2. OTHER APPROVED SCRATCH AND BROWN COATS MAY BE ACCEPTABLE. CONSULT DRYVIT FOR SPECIFICS.

The architecture, engineering, and design of the project using the Dryvit products are the responsibility of the project's design professional. All products and systems must comply with local building codes and standards. This detail is for general information and guidance only and Dryvit specifically disclaims any liability for the use of this detail. The project design professional determines, in its sole discretion, whether this detail or a functionally equivalent detail is best suited for the project. This detail is subject to change without notice. Contact Dryvit to ensure you have the most recent version.

Commercial Cement Plaster 4™



Dryvit Technical Support: 800-556-7752

Detail: Horizontal Flashing & Expansion Point

Drawn by: KAB

Checked by:

Scale: NTS

Date: 5/2023

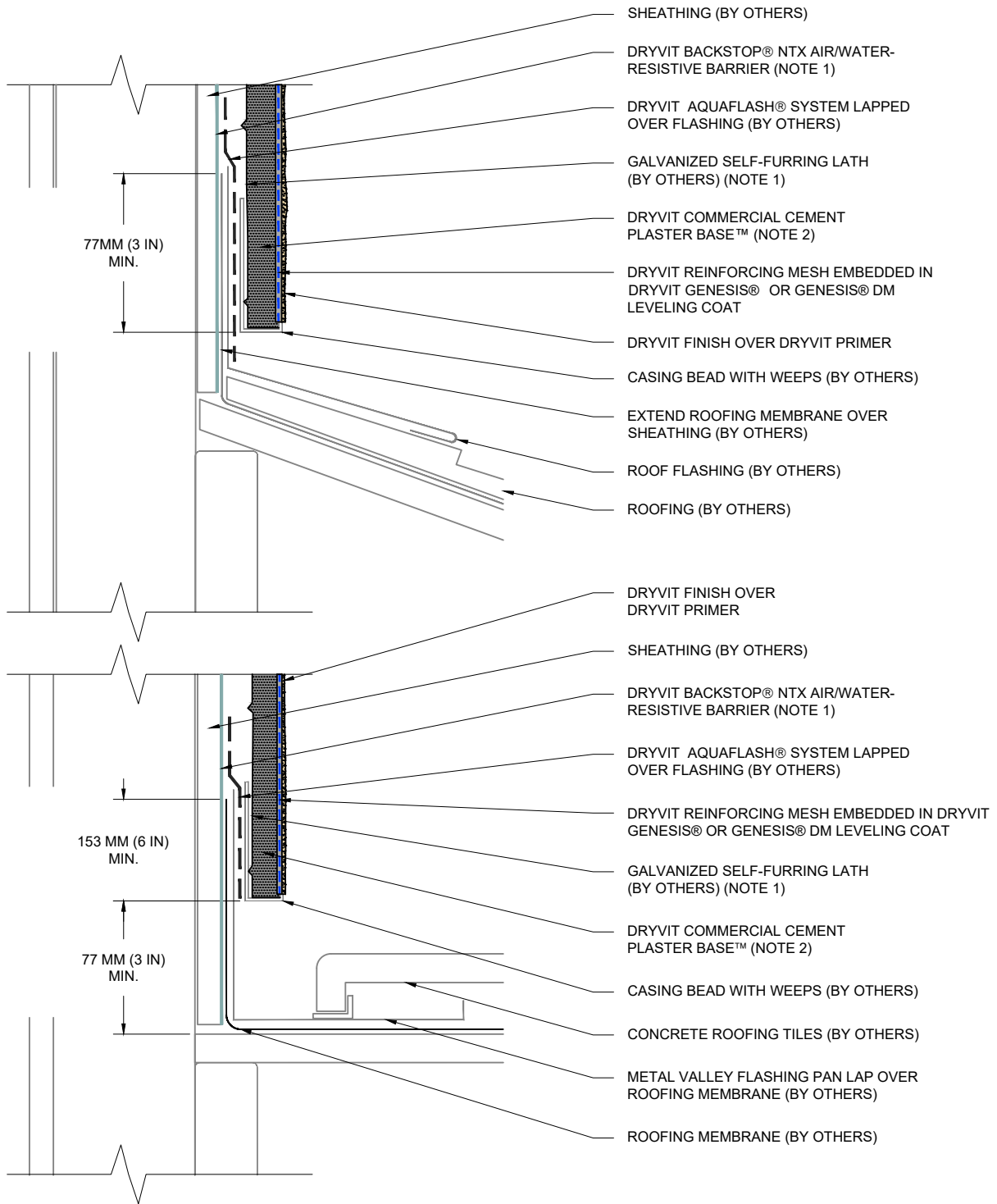
File Name:

CCP-4 11



Construction Products Group

www.tremcocpg.com



NOTE:

- BACKSTOP® NTX AIR/WATER-RESISTIVE BARRIER REQUIRES USE OF A SLIP SHEET LAYER SUCH AS #15 FELT OR PAPER BACKED LATH WHEN SPECIFIED.
- OTHER APPROVED SCRATCH AND BROWN COATS MAY BE ACCEPTABLE. CONSULT DRYVIT FOR SPECIFICS.

The architecture, engineering, and design of the project using the Dryvit products are the responsibility of the project's design professional. All products and systems must comply with local building codes and standards. This detail is for general information and guidance only and Dryvit specifically disclaims any liability for the use of this detail. The project design professional determines, in its sole discretion, whether this detail or a functionally equivalent detail is best suited for the project. This detail is subject to change without notice. Contact Dryvit to ensure you have the most recent version.

Commercial Cement Plaster 4™



Dryvit Technical Support: 800-556-7752

Detail: Termination at Roof

Drawn by: KAB

Checked by:

Scale: NTS

Date: 5/2023

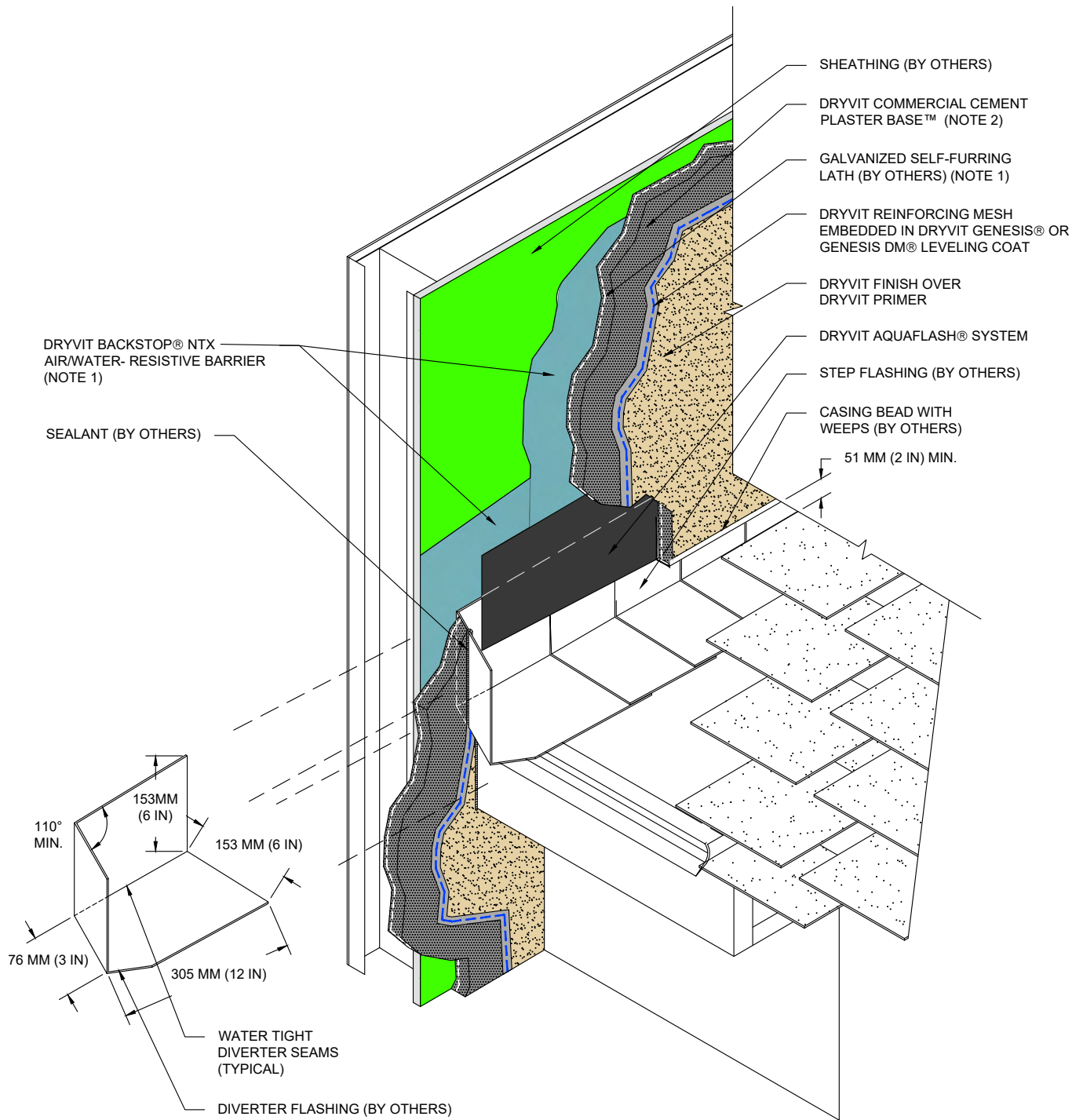
File Name:

CCP-4 12



Construction Products Group

www.tremcocpg.com



NOTE:

1. BACKSTOP® NTX AIR/WATER-RESISTIVE BARRIER REQUIRES USE OF A SLIP SHEET LAYER SUCH AS #15 FELT OR PAPER BACKED LATH WHEN SPECIFIED.
2. OTHER APPROVED SCRATCH AND BROWN COATS MAY BE ACCEPTABLE. CONSULT DRYVIT FOR SPECIFICS.

The architecture, engineering, and design of the project using the Dryvit products are the responsibility of the project's design professional. All products and systems must comply with local building codes and standards. This detail is for general information and guidance only and Dryvit specifically disclaims any liability for the use of this detail. The project design professional determines, in its sole discretion, whether this detail or a functionally equivalent detail is best suited for the project. This detail is subject to change without notice. Contact Dryvit to ensure you have the most recent version.

Commercial Cement Plaster 4™



Dryvit Technical Support: 800-556-7752

Detail: Termination at Roof/Wall Intersection

Drawn by: KAB

Checked by:

Scale: NTS

Date: 5/2023

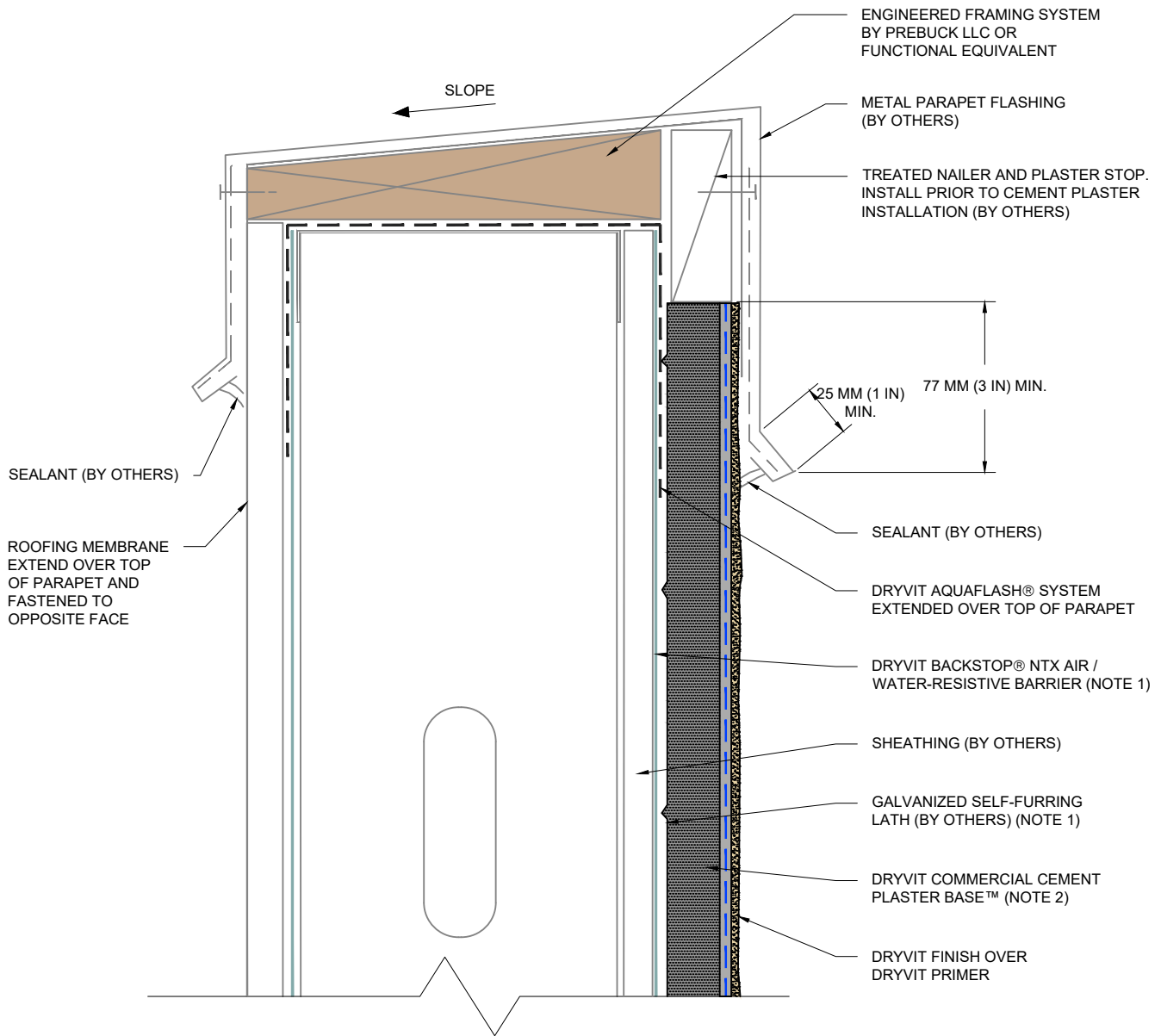
File Name:

CCP-4 13



Construction Products Group

www.tremcocpg.com



NOTE:

1. BACKSTOP® NTX AIR/WATER-RESISTIVE BARRIER REQUIRES USE OF A SLIP SHEET LAYER SUCH AS #15 FELT OR PAPER BACKED LATH WHEN SPECIFIED.
2. OTHER APPROVED SCRATCH AND BROWN COATS MAY BE ACCEPTABLE. CONSULT DRYVIT FOR SPECIFICS.

The architecture, engineering, and design of the project using the Dryvit products are the responsibility of the project's design professional. All products and systems must comply with local building codes and standards. This detail is for general information and guidance only and Dryvit specifically disclaims any liability for the use of this detail. The project design professional determines, in its sole discretion, whether this detail or a functionally equivalent detail is best suited for the project. This detail is subject to change without notice. Contact Dryvit to ensure you have the most recent version.

Commercial Cement Plaster 4™



Dryvit Technical Support: 800-556-7752

Detail: Parapet Flashing

Drawn by: KAB

Checked by:

Scale: NTS

Date: 5/2023

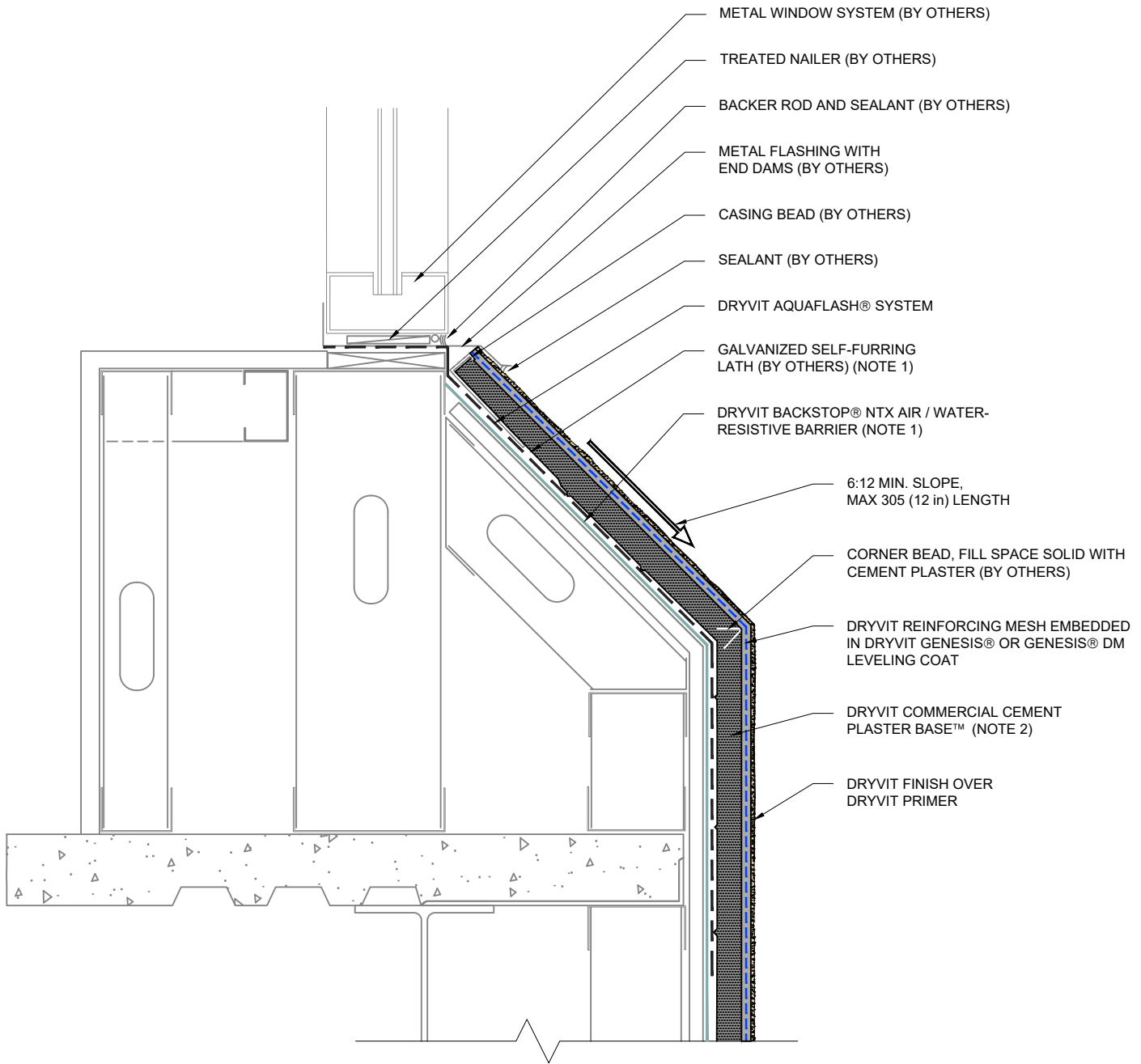
File Name:

CCP-4 14



Construction Products Group

www.tremcocpg.com



NOTE:

1. BACKSTOP® NTX AIR/WATER-RESISTIVE BARRIER REQUIRES USE OF A SLIP SHEET LAYER SUCH AS #15 FELT OR PAPER BACKED LATH WHEN SPECIFIED.
2. OTHER APPROVED SCRATCH AND BROWN COATS MAY BE ACCEPTABLE. CONSULT DRYVIT FOR SPECIFICS.

The architecture, engineering, and design of the project using the Dryvit products are the responsibility of the project's design professional. All products and systems must comply with local building codes and standards. This detail is for general information and guidance only and Dryvit specifically disclaims any liability for the use of this detail. The project design professional determines, in its sole discretion, whether this detail or a functionally equivalent detail is best suited for the project. This detail is subject to change without notice. Contact Dryvit to ensure you have the most recent version.

Commercial Cement Plaster 4™



Dryvit Technical Support: 800-556-7752

Detail: Sloped Sill

Drawn by: KAB

Checked by:

Scale: NTS

Date: 5/2023

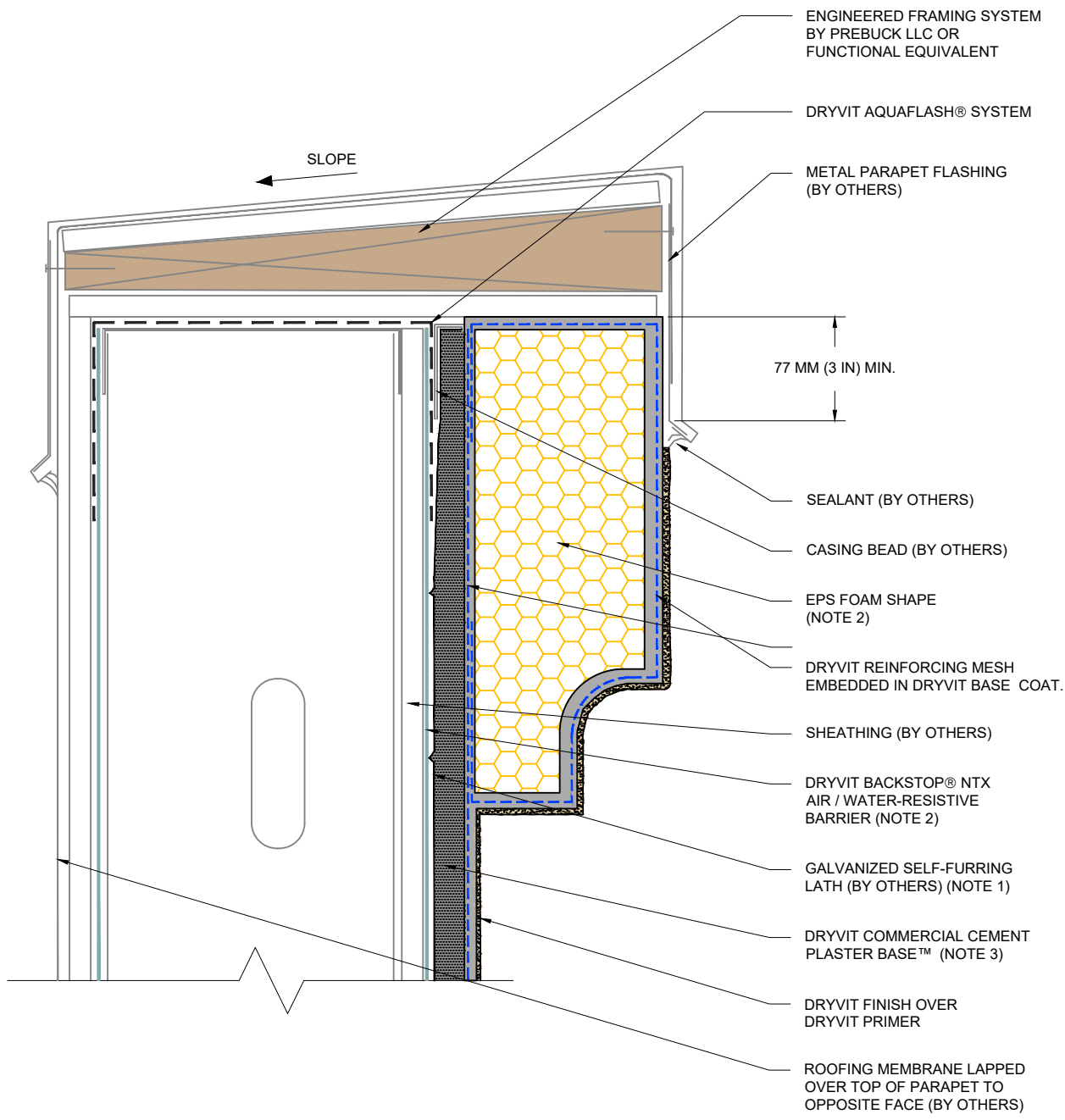
File Name:

CCP-4 15



Construction Products Group

www.tremcocpg.com





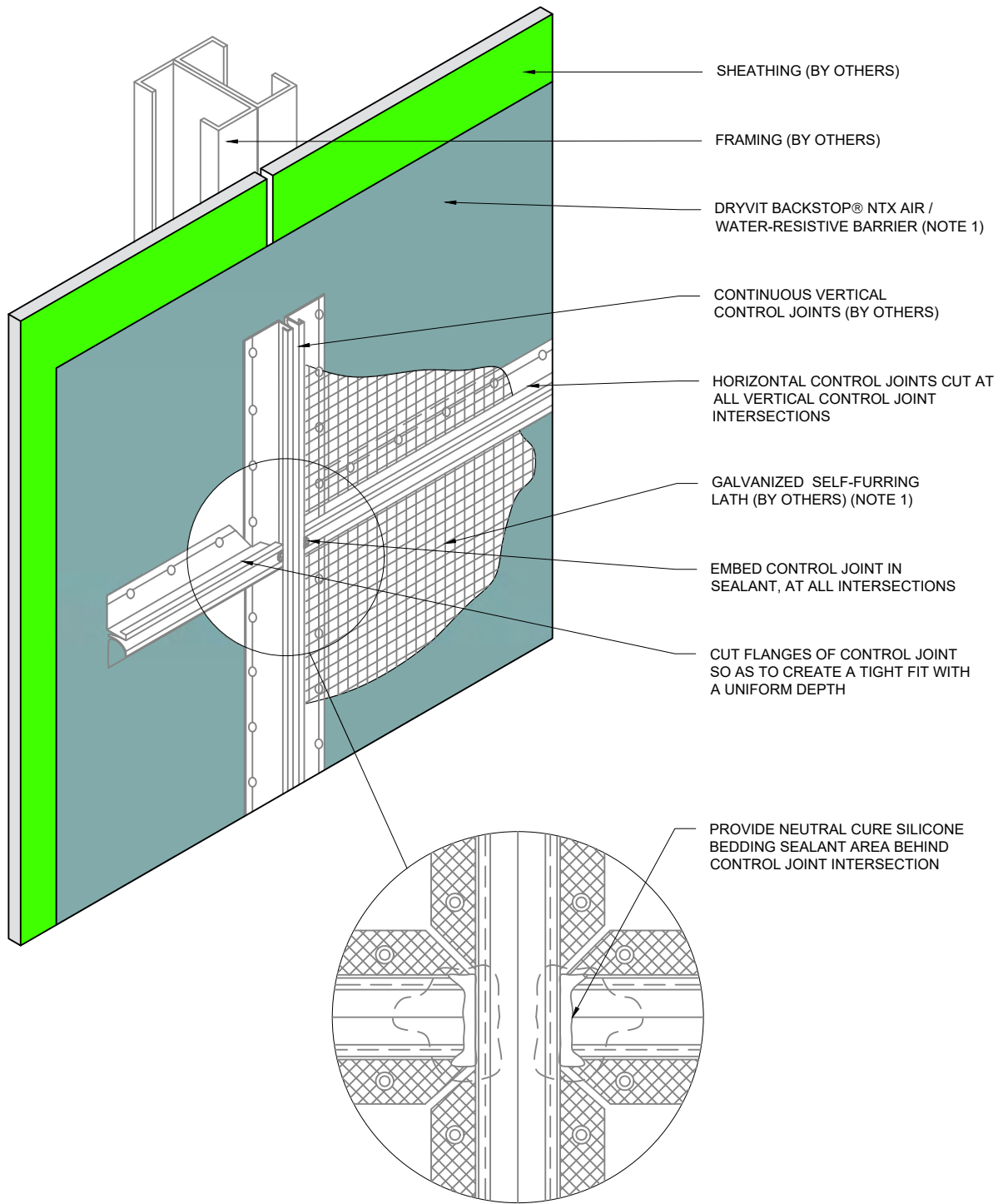
NOTE:

1. BACKSTOP® NTX AIR / WATER-RESISTIVE BARRIER REQUIRES USE OF A SLIP SHEET LAYER SUCH AS #15 FELT OR PAPER BACKED LATH WHEN SPECIFIED.
2. ADHESIVELY ATTACH EPS SHAPE TO CEMENT PLASTER BASE COAT WITH DRYVIT GENESIS® OR GENESIS® DM BASE COAT
3. OTHER APPROVED SCRATCH AND BROWN COATS MAY BE ACCEPTABLE. CONSULT DRYVIT FOR SPECIFICS.

The architecture, engineering, and design of the project using the Dryvit products are the responsibility of the project's design professional. All products and systems must comply with local building codes and standards. This detail is for general information and guidance only and Dryvit specifically disclaims any liability for the use of this detail. The project design professional determines, in its sole discretion, whether this detail or a functionally equivalent detail is best suited for the project. This detail is subject to change without notice. Contact Dryvit to ensure you have the most recent version.

Commercial Cement Plaster 4™

 Dryvit Technical Support: 800-556-7752	Detail: EPS Cornice			File Name:		 Construction Products Group
	Drawn by: KAB	Checked by:	Scale: NTS	Date: 5/2023	CCP-4 16	
www.tremcocpg.com						



NOTE:

1. BACKSTOP® NTX AIR / WATER-RESISTIVE BARRIER REQUIRES USE OF A SLIP SHEET LAYER SUCH AS #15 FELT OR PAPER BACKED LATH WHEN SPECIFIED.

The architecture, engineering, and design of the project using the Dryvit products are the responsibility of the project's design professional. All products and systems must comply with local building codes and standards. This detail is for general information and guidance only and Dryvit specifically disclaims any liability for the use of this detail. The project design professional determines, in its sole discretion, whether this detail or a functionally equivalent detail is best suited for the project. This detail is subject to change without notice. Contact Dryvit to ensure you have the most recent version.

Commercial Cement Plaster 4™



Dryvit Technical Support: 800-556-7752

Detail: Control Joint Intersection

Drawn by: KAB

Checked by:

Scale: NTS

Date: 5/2023

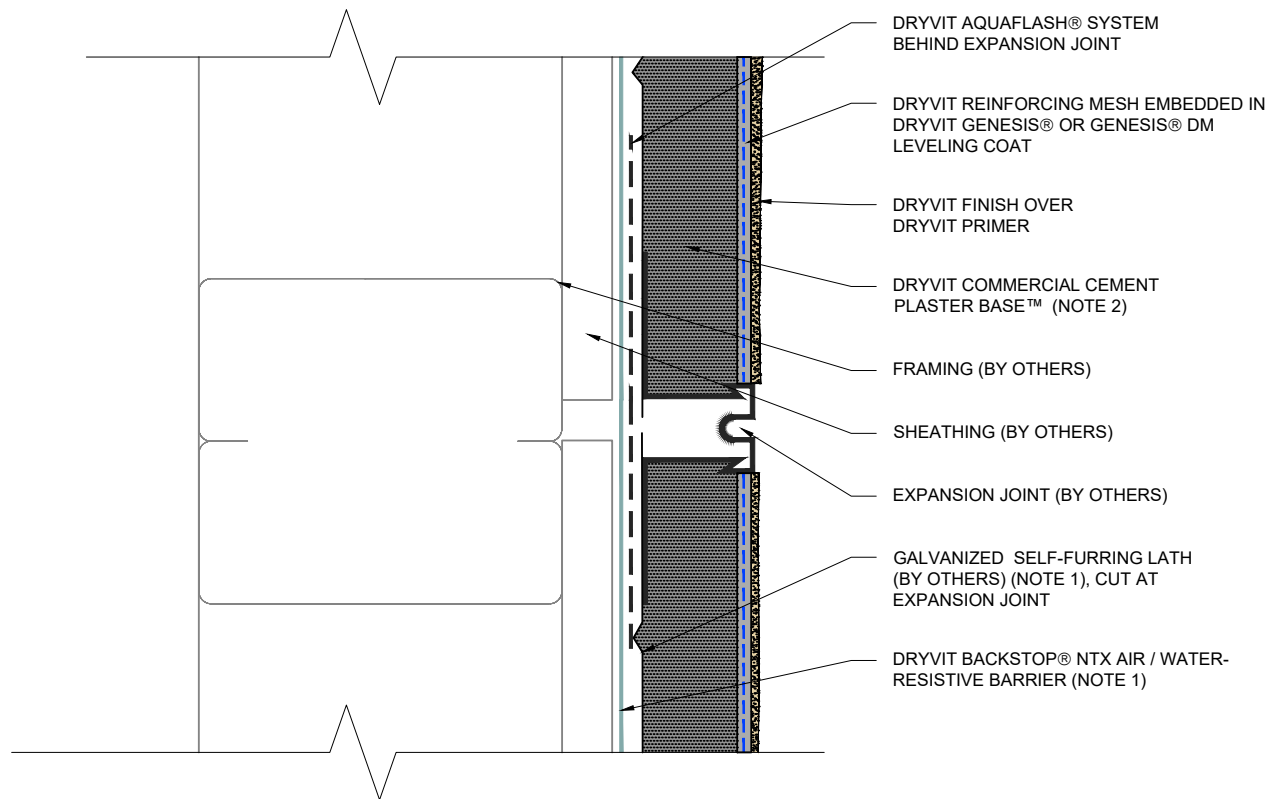
File Name:

CCP-4 17



Construction Products Group

www.tremcocpg.com




NOTE:

- BACKSTOP® NTX AIR/WATER-RESISTIVE BARRIER REQUIRES USE OF A SLIP SHEET LAYER SUCH AS #15 FELT OR PAPER BACKED LATH WHEN SPECIFIED.
- OTHER APPROVED SCRATCH AND BROWN COATS MAY BE ACCEPTABLE. CONSULT DRYVIT FOR SPECIFICS.

The architecture, engineering, and design of the project using the Dryvit products are the responsibility of the project's design professional. All products and systems must comply with local building codes and standards. This detail is for general information and guidance only and Dryvit specifically disclaims any liability for the use of this detail. The project design professional determines, in its sole discretion, whether this detail or a functionally equivalent detail is best suited for the project. This detail is subject to change without notice. Contact Dryvit to ensure you have the most recent version.

Commercial Cement Plaster 4™

 Dryvit Technical Support: 800-556-7752	Detail: Horizontal or Vertical One-Piece Expansion Joint				File Name:		 TREMCO Construction Products Group
	Drawn by: KAB	Checked by:	Scale: NTS	Date: 5/2023	CCP-4 18		
www.tremcocpg.com							