



BUILDING AND RENOVATING WITH DRYVIT PREFABRICATED PANELS



Le Meridien Hotel
Columbus, OH





GET CONTROL OVER SCHEDULES AND QUALITY WITH DRYVIT PANELIZED WALL SYSTEMS

Whether you are building new or renovating, Tech21 prefabricated panel systems from Dryvit offer unique advantages over traditional field-applied construction.

Since 1970, Dryvit has offered systems and technical support for the prefabrication of the Outsulation® brands. Tech21 by Dryvit incorporates all the benefits of an Outsulation® system, including continuous insulation (CI) and all of the beautiful aesthetic finish options to meet any design need – all fully-tested wall assemblies that meet existing building codes and offer extraordinary energy efficiency. Tech21 by Dryvit offers the most experienced and deepest team of partner fabricators in the industry.

WHY BUILD WITH PREFABRICATED PANELS?

- Limited access or space on-site
- Fast track project schedules
- Skilled labor shortage
- Eliminate delays associated with inclement weather
- Improved and centralized quality control

WHY PANELIZE USING A TECH21 PANEL?

- Largest Partner Fabricator Network in North America
- Technical support, including panel configurations
- Industry's most proven, tested system assemblies and quality products
- Support from the industry's leading brand
- Nationwide distribution network



THE BENEFITS OF PREFABRICATION

Project developers, building owners, architects and general contractors alike all derive significant benefits from prefabricated panels.



QUALITY ASSURANCE – Building wall assembly panels in a controlled, temperature moderated environment leads to consistent high quality construction.

EXTENDING THE CONSTRUCTION SEASON – Building on site in cold climates is always challenging. Prefabricated panels allow you to build in climate controlled conditions and install regardless of temperature, thereby extending the construction season.

COMPRESS THE CONSTRUCTION SCHEDULE – Prefabricated panels can be completed while the construction and framing of the structure itself is underway, allowing for quicker enclosure and enabling the building to open sooner.

REDUCE THE AMOUNT OF SCAFFOLDING – Building with panels allows you to reduce or eliminate scaffolding, substantially reducing costs.

JUST-IN-TIME WORK FLOW – Prefabricated panels arrive ready to attach to the building, creating a just-in-time process. An additional benefit is a minimization of the staging area, such as in urban settings, hard to scaffold construction, and sites with costly sidewalk rental fees.

REDUCED JOBSITE CONGESTION – Because all of the application is done offsite and delivered when needed, you get cleaner jobsite conditions.

LIGHTWEIGHT/REDUCED STRUCTURAL REQUIREMENTS – The lighter weight of the Outsulation panels makes installation faster, safer and more efficient. Tech21 by Dryvit panels typically weigh 8 pounds per square foot, compared to 25-to-50 pounds per square foot for traditional masonry construction.

THREE TECH21 PANELIZATION SYSTEM OPTIONS

Tech21 by Dryvit features three engineered, fully tested, proven continuously insulated panel assemblies for both new construction and exterior renovations.

FEDDERLITE® PANEL SYSTEM

Fedderlite is a panel system for use in new construction or retrofit over solid substrates. This panel utilizes a unique process for embedding reinforcing channels into the continuous insulation to provide a means for handling, as well as mechanical attachment to the wall. Fedderlite panels may be adhered or mechanically fastened to approved substrates.



METALITE® PANEL SYSTEM

Metalite is a prefabricated panel system utilizing an Outsulation system over a specially designed, proprietary light gauge metal pan. Metalite is ideally suited for pre-engineered metal buildings, warehouses and manufacturing facilities, as well as mechanical screens and retrofit construction applications.

OUTSULITE™ PANEL SYSTEM

The most versatile of all the Tech21 panel systems, Outsulite provides the strength and ability to be configured to any shape panel. All Outsulite panels are designed in accordance with the current AISI Standards and the manufacturers' load tables. Also deflections are limited to $L/240$. The studs, sheathing and building connections are engineered by the panel fabricator to properly conform with building code design load requirements. At approximately 8 lbs./sf, Outsulite panels still provide a light weight alternative to conventional exterior wall systems, providing a single structural system for supporting the exterior cladding and window systems as well as other accessories.



Visit Dryvit.com to view specifications and details for each system option.



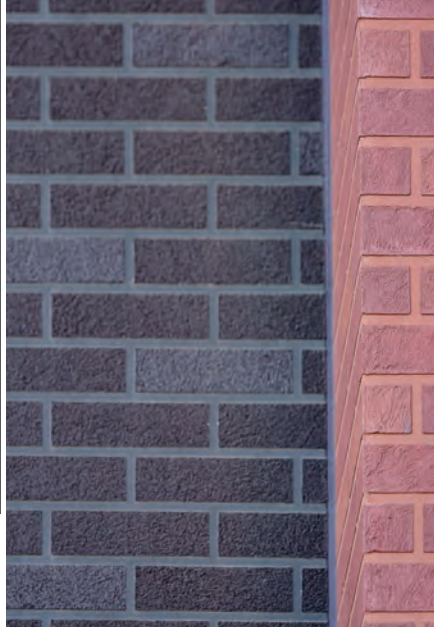
OUR GROWING NATIONAL PARTNER FABRICATOR NETWORK

Not only is Dryvit the most experienced EIFS manufacturer, we've also been at the forefront of the EIFS panelization business since the early 1970s. Our innovative products, panel systems and Partner Fabricator Network continues to grow everyday.

The DryvitTech21 partner fabricator network is capable of servicing you anywhere in the United States.

For information on the partner fabricator nearest you, contact ourTech21 team at 1-800-556-7752, ext. 9.





GET STARTED TODAY!

Consult with Dryvit's Tech21 Team at 1-800-556-7752 ext. 9 for more information on how you can benefit from the Tech21 panelization program.

FINISHES FOR EVERY DESIGN CHALLENGE

We all want our buildings to stand out and be noticed. That's why Dryvit manufactures an array of finishes that replicate brick to stone to granite to metal panels and more. Use them alone or in combination to create the unique exterior you want, but can not afford with heavier, costlier materials.

VENEERS



Seamless Stone



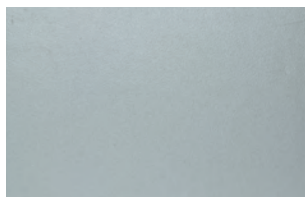
Traditional Plaster



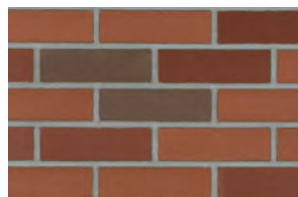
Limestone



Old World or "Aged"
Plaster



Metal Panel Effects



Brick

Information contained in this brochure conforms to the standard detail recommendations and specifications for the installation of Dryvit Systems, Inc. products as of the date of publication of this document and is presented in good faith. Dryvit Systems, Inc. assumes no liability, expressed or implied, as to the architecture, engineering or workmanship of any product. To ensure that you are using the latest, most complete information, contact Dryvit Systems, Inc.

Dryvit Systems, Inc.
One Energy Way
West Warwick, RI 02893
401-822-4100
dryvit.com



© Dryvit Systems, Inc. 2017
Printed in U.S.A. R1: 2-22-17 3-17-5M
DS210