



WORLD-CLASS STARTER BOARDS™

Build it right, start^{er} to finish™

**FASTER, STRONGER AND BETTER
THAN BACK WRAPPING**

IBC Code Approved ESR-2931, Full Dryvit Warranty



WHY DRYVIT SHAPES BY ACROCORE

WARRANTY:



= FULL DRYVIT SYSTEM WARRANTY

An additional two (2) years of warranty coverage is available when Dryvit Shapes by Acrocore or Starter Boards are used with an Outsulation® system.

CODE COMPLIANT

Complies with NFPA 285 and other building code requirements for use in Construction Types I-V.

EVERYONE BENEFITS:

ARCHITECTS

Have the ability to specify a complete Outsulation® system using pre-coated starter boards and architectural shapes with a single source warranty.

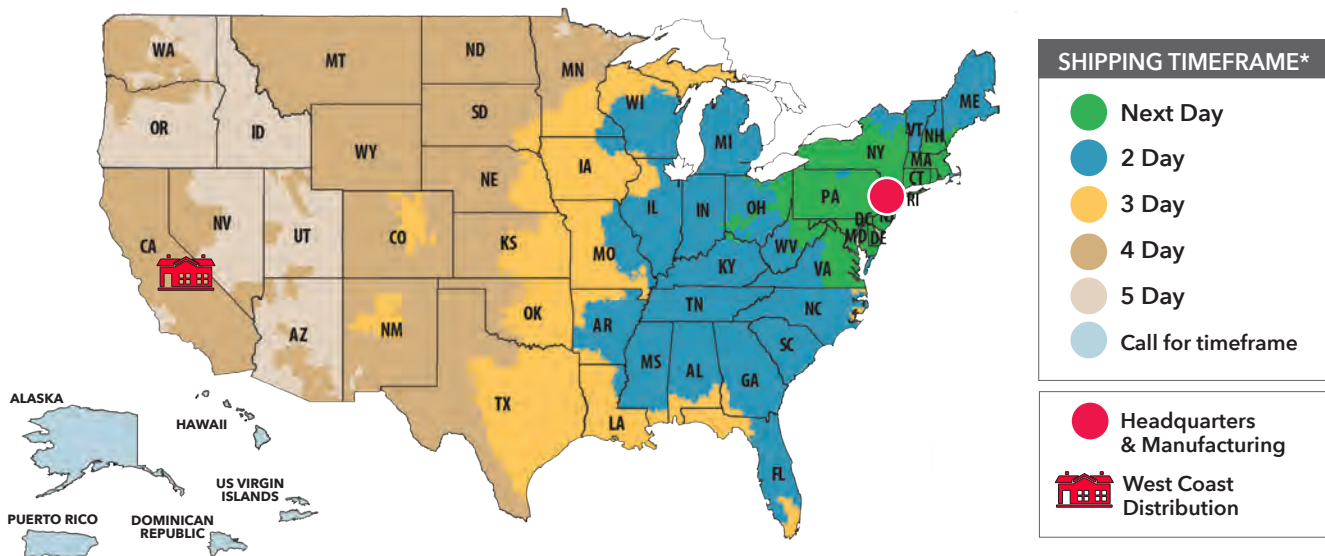
BUILDING OWNERS

Have unlimited design options and possibilities, a full Dryvit system warranty and better quality finished product.

CONTRACTORS

Will save time, labor, money and create a higher quality job.

FTL SHIPPING LOGISTICS



Dryvit Starter Boards can arrive at any destination coast to coast within 5 days.

Contact us for international rates and delivery schedule.

*Shipping dates may vary based on inventory availability, weekends and holidays.

TO PLACE AN ORDER, PLEASE CONTACT YOUR LOCAL DRYVIT® DISTRIBUTOR

STARTER BOARDS®:

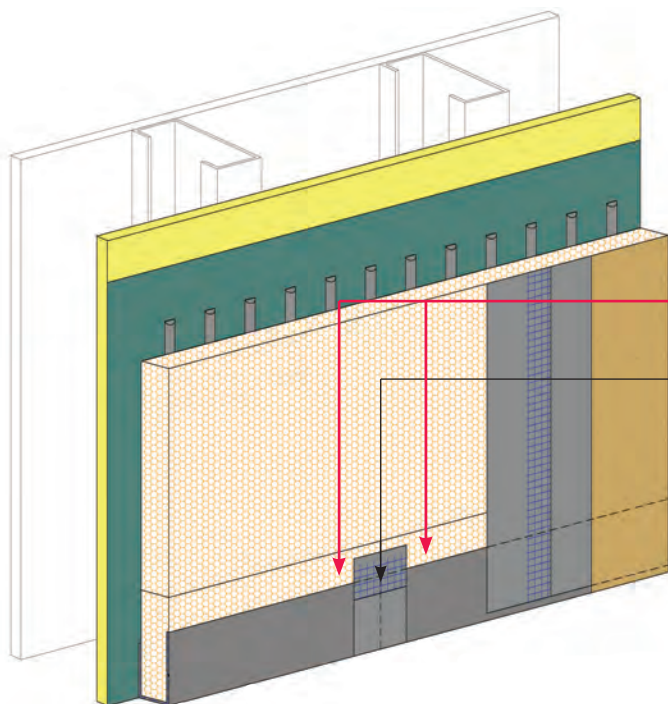
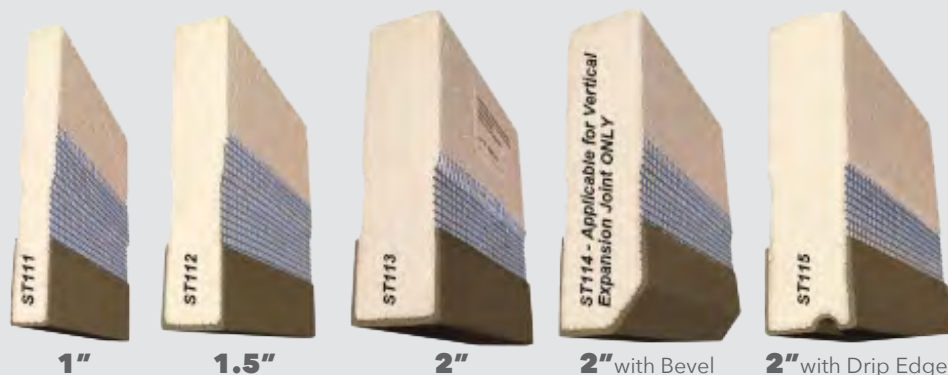
- Not only eliminate the need to back wrap* mesh at termination details, they provide 3 sides of "Polymer Modified Cement"
- Provides a proper surface for sealant at expansion joints
- Provides closure at system terminations
- Eliminate the need for the Dryvit Drainage Strip™ with moisture drainage systems

* Where Starter Boards abut each other, the joint must be back wrapped with Dryvit Detail Mesh® and Dryvit Base Coat.

PRODUCT BENEFITS:

- **LABOR SAVINGS** (3x Faster)
- **IMPACT RESISTANT**
(Pliable / Polymer Modified Cement)
- **LONGER LASTING** (3x Thicker Base Coat)
- **BUILDING CODE COMPLIANT**
Approved for use in Types I-V Construction - ICC ESR-2931
- **FULL DRYVIT WARRANTY**

SUPPLIED IN 8' LENGTHS

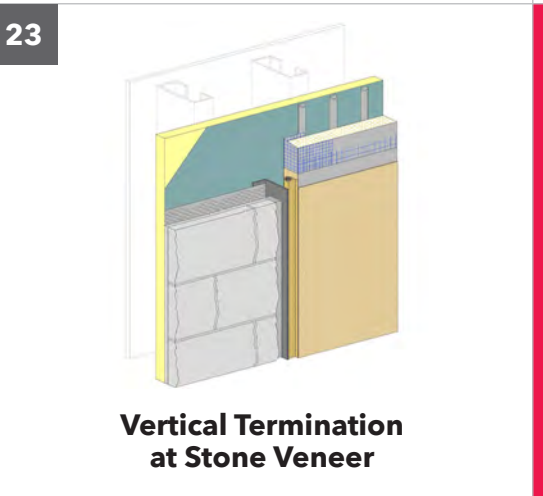
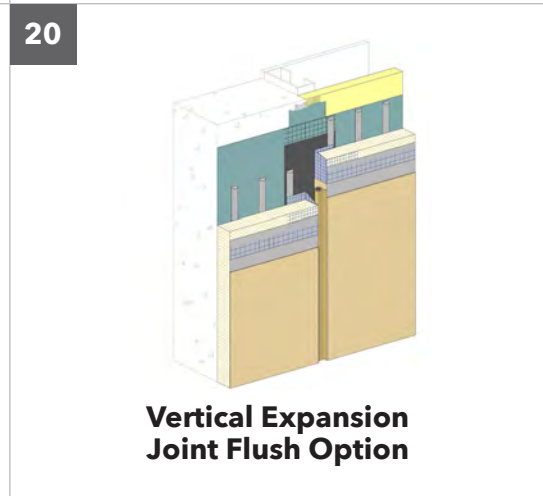
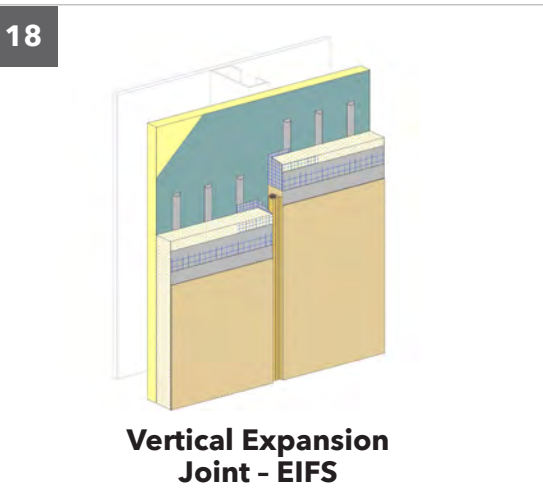
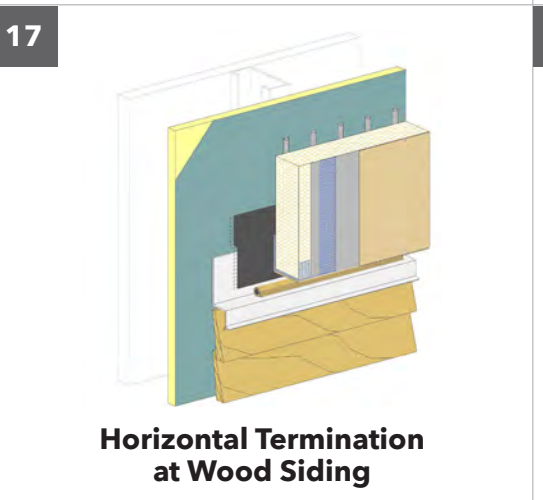
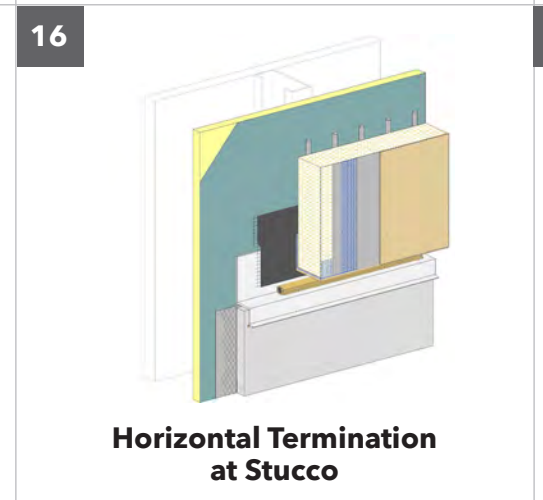
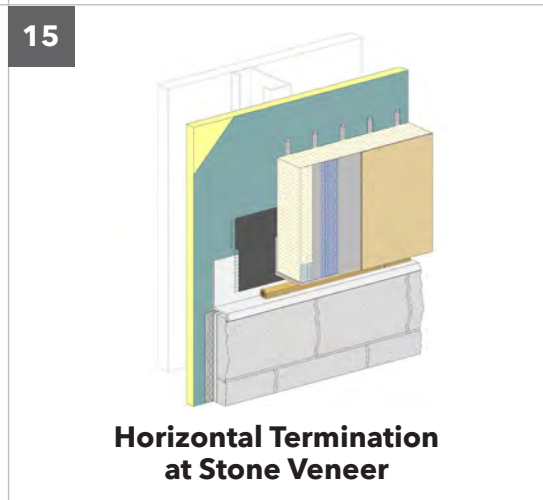
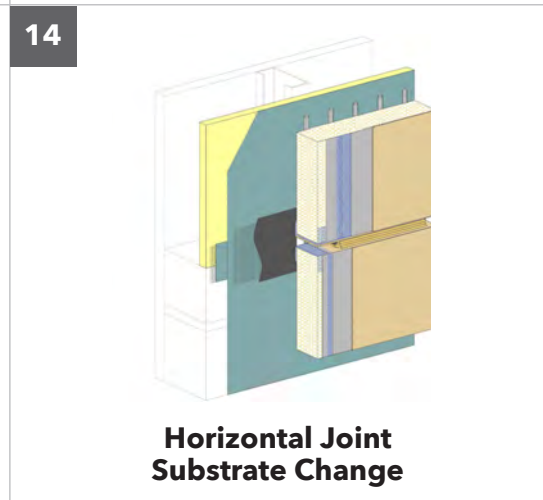
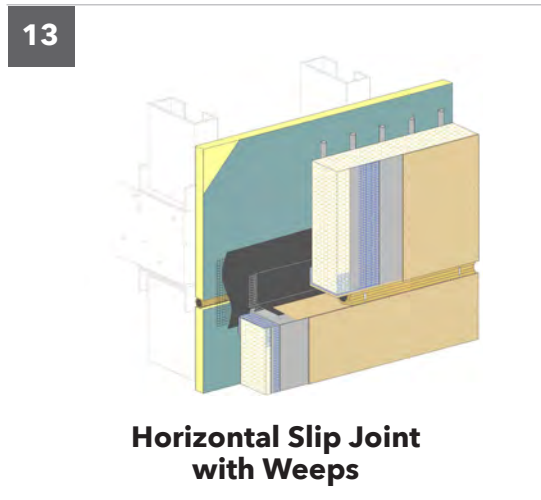
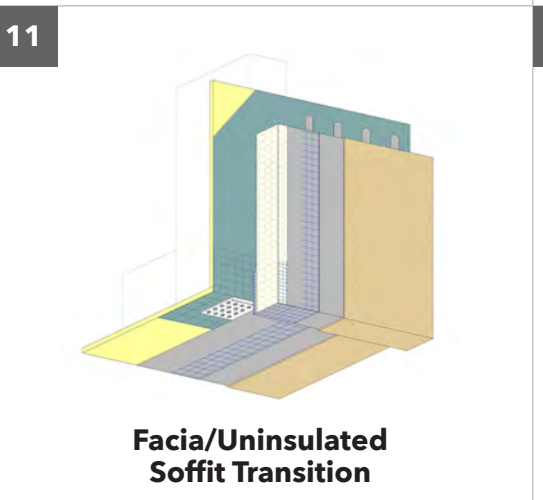
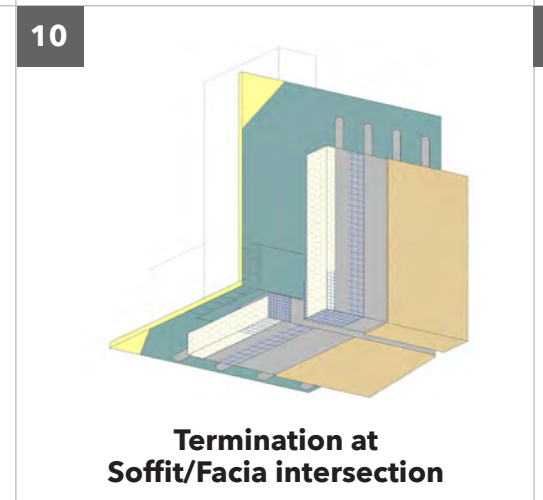
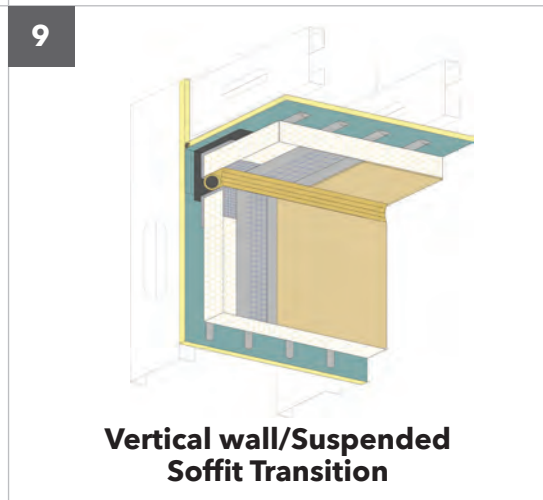
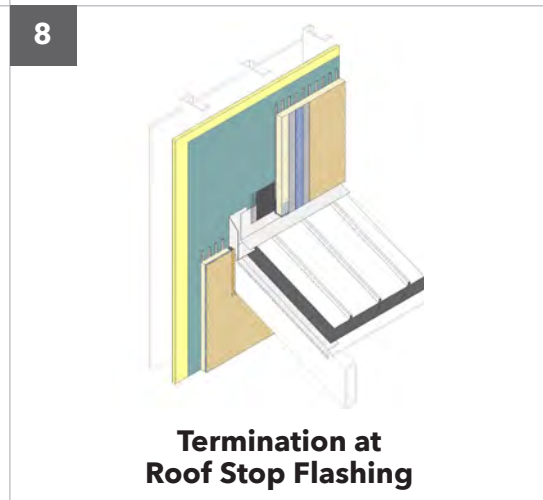
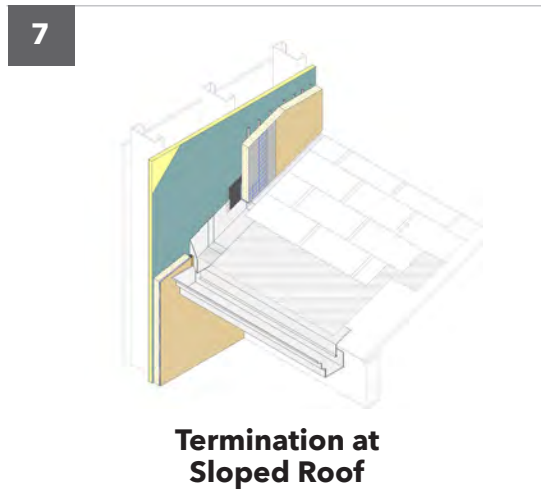
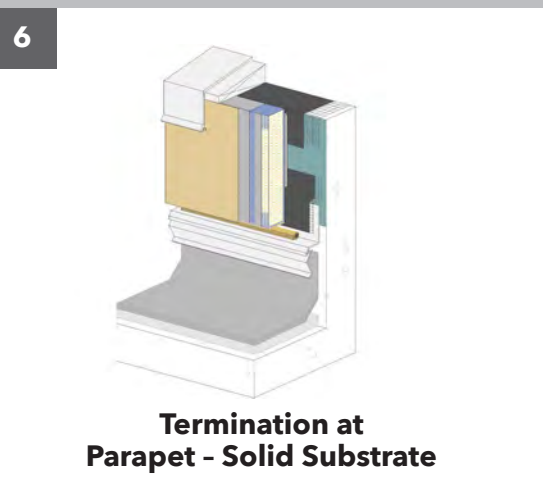
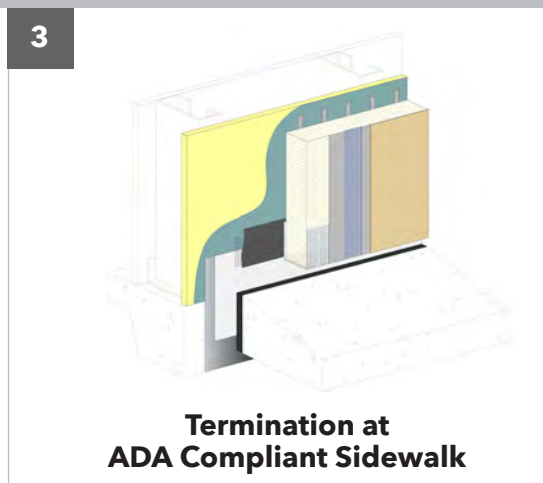
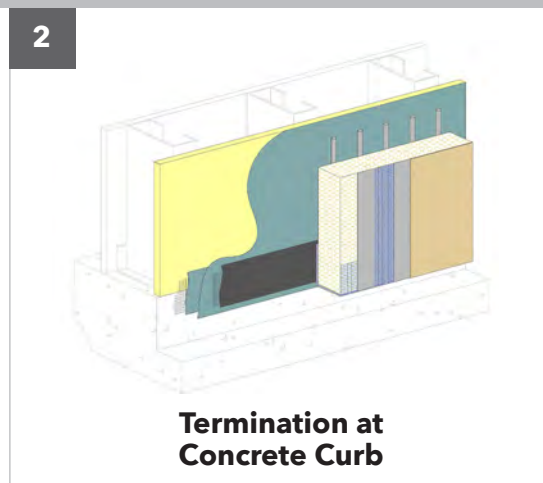
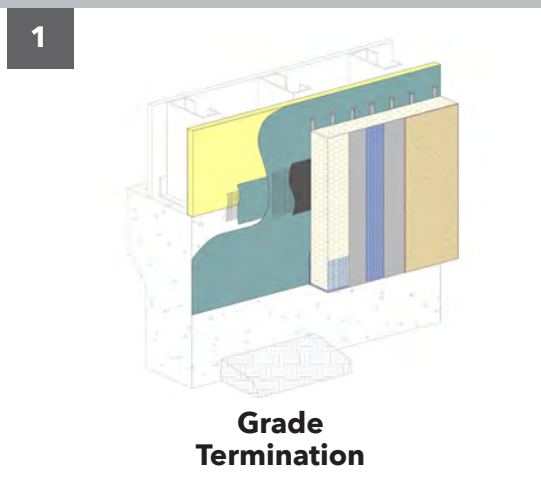


HOW IT WORKS:

- Typical OUTSULATION® system
 - Dryvit Shapes by Acrocore Starter Board™
- Dryvit Detail Mesh® embedded in Dryvit Base Coat at starter board joints. Overlap Detail Mesh 2 1/2" (64mm) minimum onto each board and wrap to backside 2" (51mm) minimum

The architecture, engineering, and design of the project using Acrocore Exterior Mouldings LLC and/or Dryvit Systems, Inc. products is the responsibility of the project's design professional. All systems must comply with local building codes and standards. This detail is for general information and guidance only and Acrocore Exterior Mouldings LLC and/or Dryvit Systems, Inc., specifically disclaims any liability for the use of this detail and for the architecture, design, engineering or workmanship of any project. The project design professional determines, in its sole discretion, whether this detail or a functionally equivalent detail is best suited for the project. Use of a functionally equivalent detail does not violate the Dryvit's Systems, Inc. warranty. This detail is subject to change without notice. Contact Dryvit Systems, Inc. to ensure you have the most recent version.

STARTER BOARDS ASSURE PROPER SYSTEM TERMINATIONS - WHILE SAVING TIME



Outsulation Plus MD System details shown for clarity. Additional information is available at: www.dryvit.com



Additional information is available at: www.dryvit.com

To place an order, please contact your local Dryvit® Distributor

www.dryvitshapes.com ■ 800-213-2183

Acrocore Exterior Mouldings, LLC
One Ackerman Avenue, Clifton, NJ 07011