



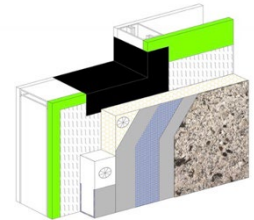
TECHNICAL DATA SHEET

Outsulation® LCMD Systems 1-5

Exterior Wall Insulation and Finish Systems With
Moisture Drainage That Incorporates Continuous
Insulation and a Water-Resistive Barrier
DS838

FOR AN EXTRA LEVEL OF MOISTURE PROTECTION

The Outsulation LCMD Systems 1-5 from Dryvit has been engineered specifically for light commercial construction. It incorporates a drainage plane that is installed between the code-approved water-resistive barrier and the continuous insulation. It is this drainage plane that allows for incidental water to weep to the exterior. The systems are mechanically fastened over a sheet type, water-resistive barrier to most common building substrates with Dryvit approved fasteners or approved lath. The Outsulation LCMD Systems 1-5 is designed to be used in all areas of the country and in all types of climates. The system provides continuous insulation to meet local Energy Codes and architectural appeal that has made Dryvit the number one choice in North America.



FEATURES & BENEFITS

FEATURES

- Energy Efficiency
- Design Flexibility
- Durability
- Two levels of weather protection
- Affordable
- Limitless finish/texture options

WARRANTY

Dryvit shall provide a written limited materials warranty upon written request. Dryvit shall make no other warranties, expressed or implied. Dryvit does not warrant workmanship. Full details are available from Dryvit.

PEACE OF MIND PLUS ALL THE DRYVIT FEATURES YOU'VE ENJOYED FOR OVER 50 YEARS

With the Outsulation LCMD Systems 1-5, you get two levels of weather protection plus all of these attractive features:

Energy Efficiency: The system incorporates continuous insulation, which is installed on the outside of the framing, effectively sealing thermal bridges, reducing energy loss and providing a more consistent interior temperature.

Design Flexibility: Choose from a multitude of colors and textures to give the project your distinctive touch. The Outsulation LCMD Systems 1-5 allows for affordable and impressive entranceways, window borders, arches, columns, sculptured looks and more.

Durability: Dryvit systems have been tested and proven in exhaustive studies for impact, fade and stain resistance. Dryvit's DPR (Dirt Pickup Resistance) finishes and PMR™ (Proven Mildew Resistant) finishes offer owners state-of-the-art performance. Dryvit finishes, as with all other exteriors, require minimal maintenance (refer to Dryvit's Cleaning and Recoating Data Sheet DS152). For details, specifications and other information visit our website at <http://www.dryvit.com>, or call 1-800-556-7752 ext. 9.

Information contained in this product sheet conforms to the standard detail recommendations and specifications for the installation of Dryvit products as of the date of publication of this document and is presented in good faith. Dryvit assumes no liability, expressed or implied, as to the architecture, engineering or workmanship of any project. To ensure that you are using the latest, most complete information, contact Dryvit.

For more information on Dryvit or Continuous Insulation, [click here](#).

Printed in USA. Issued 1.1.2022
©Dryvit 2022
DS838

Tremco Construction Products Group (CPG) brings together the Commercial Sealants & Waterproofing and Roofing & Building Maintenance divisions of Tremco CPG Inc.; Dryvit and Willseal brands; Nudura Inc.; Prebuck LLC; Tremco Barrier Solutions, Inc.; Weatherproofing Technologies, Inc.; Weatherproofing Technologies Canada, Inc.; and Pure Air Control Services, Inc.



dryvit.com | 800.556.7752



Construction Products Group

3735 Green Rd. | Beachwood, OH 44122
800.321.7906 | tremcocpg.com