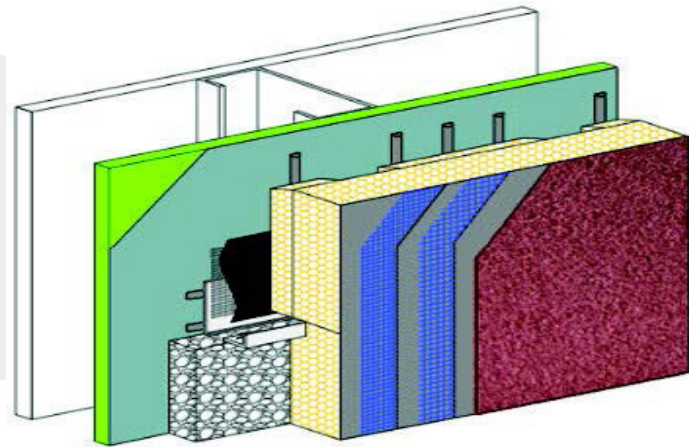


# OUTSULATION® PE

A pressure-equalized rainscreen exterior insulation and finish system with moisture drainage that incorporates continuous insulation with an air/water-resistive barrier

## Summary

Dryvit offers a family of performance-based systems that allow architects and owners to meet the specific demands of today's energy codes, including continuous insulation and an air/water-resistive barrier. Dryvit's original Outsulation System has been installed on over 500,000 buildings worldwide in all climate zones. Due to the increased demands for a wall system to be able to drain away incidental moisture, the Outsulation concept has grown into a family of related systems, each building upon the other to achieve specific performance goals. Outsulation PE is a part of Dryvit's family of high-performance, engineered, exterior insulation and finish systems and features a pressure-equalized rainscreen concept.



## Pressure-Equalized Rainscreen Technology

Outsulation PE incorporates the concept of Pressure Equalization to allow the interlocking cavity in back of the cladding to pressurize during a wind-driven rain event. Closure blocks are configured to compartmentalize the wall for pressure equalization. This eliminates any pressure differential that would draw water into the cavity from a breach in the outside surface. By removing the driving force, the bulk of water will simply flow down the outside wall surface. The inclusion of an air barrier assembly will also stop air infiltration through the wall assembly, improving interior comfort as well as thermal performance.

## Features

- Pressure-Equalized Rainscreen Technology
- Moisture drainage technology
- Liquid-applied air/water-resistive barrier



# System Components

1. Air/Water-Resistive Barrier: Backstop® NT™ Water-Resistive Membrane and Air Barrier (available in Texture, Smooth or Spray) or ExoAir® 230 Synthetic Air & Vapor Permeable Membrane
2. Dryvit Grid Tape™
3. Dryvit AquaFlash® System, Flashing Tape™ and Surface Conditioner™, Dymonic® 100 or Backstop Flash & Fill™
4. Dryvit Vent Assembly™
5. Dryvit Track and Vent Track™
6. Dryvit AP Adhesive™ to adhere Dryvit Track and Vent Track
7. Dryvit Adhesive in vertical notched trowel configuration
8. Insulation board with bevels and grooves, creating a layer of continuous insulation



9. Insulation board closure blocks
10. Dryvit reinforced base coat
11. Dryvit finish

## Moisture Drainage Technology

Outsulation PE offers the most comprehensive, easy-to-install drainage system available for commercial use today. It provides three lines of defense against water intrusion. The first is Dryvit's time-tested combination of reinforced base coat and finish. The second is our specially-designed, grooved EPS with drainage track and vent assembly, providing continuous insulation to meet local Energy Codes. The third is a Dryvit/Tremco® approved air/water resistive barrier and accessories. A compatible sealant must be utilized at all system terminations. Dryvit Systems, Inc. is an ISO 9001:2015 and ISO 14001:2015 certified company. ISO standards have been established worldwide as a common denominator for product excellence. Dryvit is the recognized leader in construction technology. With leadership comes an obligation and commitment to research and development. The Outsulation MD System is an example of our determination to continuously evaluate market demands and develop new and exciting products.

## One Stop for Your Next Project's Building Envelope

Imagine the convenience of one source for information and assistance on building envelope components. One source for all the project-specific, custom details with solutions that are tested, proven and warranted together. A Tremco Construction Products Group building envelope is designed

Dryvit Systems, Inc. | One Energy Way | West Warwick, RI 02893 | 401.822.4100 | [dryvit.com](http://dryvit.com)

Tremco Construction Products Group (CPG) brings together Tremco Incorporated's Commercial Sealants & Waterproofing and Roofing & Building Maintenance operating divisions; Dryvit Systems, Inc.; Nudura Inc.; Willseal; Weatherproofing Technologies, Inc. and Weatherproofing Technologies Canada, Inc.

Dryvit®, Outsulation®, Backstop®, and AquaFlash® are registered trademarks of Dryvit Systems, Inc. Tremco®, ExoAir® and Dymonic® are registered trademarks of Tremco Incorporated. Use of the ® symbol indicates registration with the US Patent & Trademark Office and the Canadian Intellectual Property Office.

DS933



Construction Products Group

[tremcocpg.com](http://tremcocpg.com)