

# OUTSULITE®

# MODULITE™

Prefabricated Solutions

Industry-Leading Panel System with Dryvit  
Outsulation and an Air/Water-Resistive Barrier

## Product Overview

The most versatile Modulite panel system, Outsulite® provides the strength and ability to configure to any panel shape, and are designed in accordance with current AISI Standards and manufacturer load tables. Deflections are limited to L/240. Stud, sheathing and building connections are engineered by panel fabricators to conform with building code design load requirements.

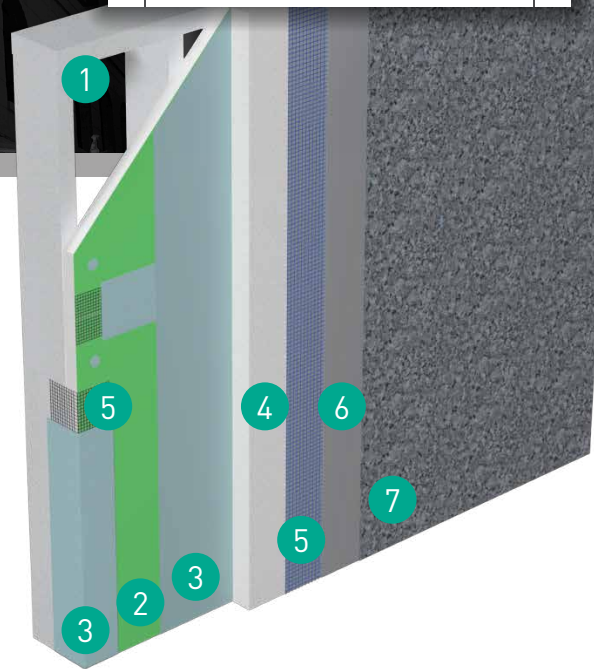
At approximately 8 lb/ft<sup>2</sup>, Outsulite panels are a lightweight alternative to conventional systems, providing a single structural system for supporting the exterior cladding, window systems and other accessories.

## Features & Benefits

- Maximum insulation in a single structural system for supporting cladding, window systems and more
- Perfect for tight job sites
- Single structural system for supporting cladding, fenestration systems and more
- Lightweight alternative to conventional systems at just 8 lb/ft<sup>2</sup>



Outsulite panel installation



## System Components

|   |  |
|---|--|
| 1 | Light-Gauge Steel Framing  |
| 2 | Approved Sheathing   |
| 3 | Backstop® Air/Water-Resistive Barrier / Dymonic® 100 Detailing Sealant |
| 4 | Expanded Polystyrene (EPS) w/ Dryvit Adhesive                          |
| 5 | Reinforcing Mesh ( <i>Embedded in Base Coat</i> )                      |
| 6 | Base Coat  |
| 7 | Finish Coat ( <i>Shown: TerraNeo®</i> )                                |



Outsulite panel installation

# Why Build with Modulite Prefabricated Panels?

Speed construction or restoration. Simplify installation. Extend the construction season. A structure built with Modulite prefabricated panels means more for everyone – more satisfied contractors, more comfortable occupants or tenants, and more efficient structures and cost-effective operation for owners.



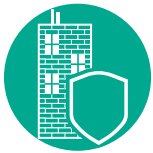
### Faster Construction Time

In-plant fabrication can reduce production time, and speed up field application of exterior cladding systems, to reduce construction schedules.



### Any Look You Want

A wide range of colors and finishes like brick, granite, metals, stucco and more provide maximum flexibility in your façade aesthetic.



### Stronger and More Resilient

Our systems are designed for maximum durability, many with service lives far surpassing that of competing systems.



### Avoid Labor Shortage Problems

Pre-fabricated Dryvit panels can help address ongoing shortages in the skilled labor force – while simultaneously maximizing quality control.



### Cost-Effective for the Long Term

A broad range of products can fit most project budgets – but our energy-efficiency and maintenance solutions can also help you ensure cost-effective ownership and operation for the long term.



### Better Insulated

Industry-leading Outsulation® continuous insulation means efficient construction and operation, and will exceed strict energy codes for insulation.



### One Point of Contact

Our products and systems are backed by industry-leading warranties – all from a single point of contact. We can also help with everything from asset management to diagnostics to installer training.



### Leading Edge Sustainability

Our building solutions help you reduce waste, and meet green building standards like Net Zero, Living Building Challenge, Passive House and more.

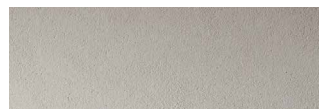
## DRYVIT® FINISH OPTIONS | Choose from unlimited color and finish combinations!



AMERISTONE™



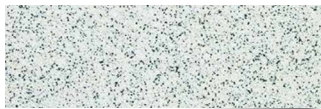
FERROS™



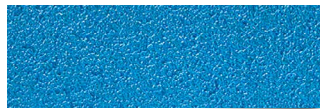
LYMESTONE™



QUARZPUTZ®



STONE MIST



REFLECTIT™ TEXTURE



CUSTOM BRICK™



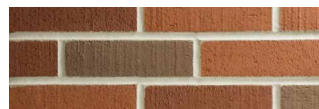
SANDPEBBLE™



TERRA NEO®



REFLECTIT™ SMOOTH



NEWBRICK™



TUSCAN GLAZE™

Dryvit Systems, Inc. | One Energy Way | West Warwick, RI, 02893 | 401.822.4100 | dryvit.com

Tremco Construction Products Group (CPG) brings together Tremco Incorporated's Commercial Sealants & Waterproofing and Roofing & Building Maintenance operating divisions; Dryvit Systems, Inc.; Nudura Inc.; Willseal; Weatherproofing Technologies, Inc. and Weatherproofing Technologies Canada, Inc.

Dryvit®, AquaFlash®, Backstop®, Outsulation®, Fedderlite®, Metalite®, Outsulite®, Quartzputz® and TerraNeo® are registered trademarks of Dryvit Systems, Inc. Ameristone™, Custom Brick™, Ferros™, Limestone™, NewBrick™, Reflectit™, Sandpebble™ and Tuscan Glaze™ are trademarks of Dryvit Systems, Inc. Use of the ® symbol indicates registration with the US Patent & Trademark Office and the Canadian Intellectual Property Office.

Part of



Construction Products Group