

OUTSULITE®

MODULITE™

Prefabricated Solutions

Industry-Leading Panel System with Dryvit
Outsulation and an Air/Water-Resistive Barrier

Product Overview

The most versatile Modulite panel system, Outsulite® provides the strength and ability to configure to any panel shape, and are designed in accordance with current AISI Standards and manufacturer load tables. Deflections are limited to L/240. Stud, sheathing and building connections are engineered by panel fabricators to conform with building code design load requirements.

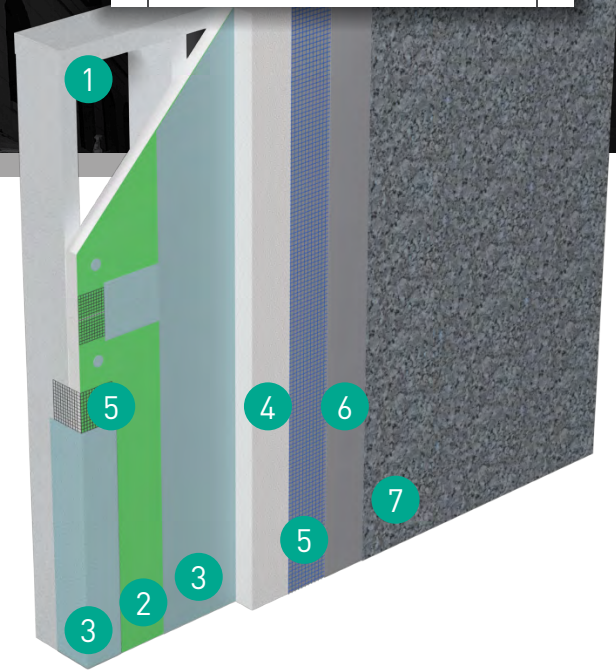
At approximately 8 lb/ft², Outsulite panels are a lightweight alternative to conventional systems, providing a single structural system for supporting the exterior cladding, window systems and other accessories.

Features & Benefits

- Maximum insulation in a single structural system for supporting cladding, window systems and more
- Perfect for tight job sites
- Single structural system for supporting cladding, fenestration systems and more
- Lightweight alternative to conventional systems at just 8 lb/ft²



Outsulite panel installation



System Components

- | | |
|---|---|
| 1 | Light-Gauge Steel Framing |
| 2 | Approved Sheathing |
| 3 | Backstop® Air/Water-Resistive Barrier /
Dymonic® 100 Detailing Sealant |
| 4 | Expanded Polystyrene (EPS) w/ Dryvit Adhesive |
| 5 | Reinforcing Mesh (<i>Embedded in Base Coat</i>) |
| 6 | Base Coat |
| 7 | Finish Coat (<i>Shown: TerraNeo®</i>) |



Outsulite panel installation

Why Build with Modulite Prefabricated Panels?

Speed construction or restoration. Simplify installation. Extend the construction season. A structure built with Modulite prefabricated panels means more for everyone – more satisfied contractors, more comfortable occupants or tenants, and more efficient structures and cost-effective operation for owners.



Faster Construction Time

In-plant fabrication can reduce production time, and speed up field application of exterior cladding systems, to reduce construction schedules.



Any Look You Want

A wide range of colors and finishes like brick, granite, metals, stucco and more provide maximum flexibility in your façade aesthetic.



Stronger and More Resilient

Our systems are designed for maximum durability, many with service lives far surpassing that of competing systems.



Avoid Labor Shortage Problems

Pre-fabricated Dryvit panels can help address ongoing shortages in the skilled labor force – while simultaneously maximizing quality control.



Cost-Effective for the Long Term

A broad range of products can fit most project budgets – but our energy-efficiency and maintenance solutions can also help you ensure cost-effective ownership and operation for the long term.



Better Insulated

Industry-leading Outsulation® continuous insulation means efficient construction and operation, and will exceed strict energy codes for insulation.



One Point of Contact

Our products and systems are backed by industry-leading warranties – all from a single point of contact. We can also help with everything from asset management to diagnostics to installer training.



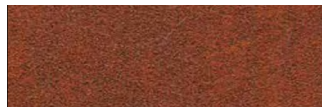
Leading Edge Sustainability

Our building solutions help you reduce waste, and meet green building standards like Net Zero, Living Building Challenge, Passive House and more.

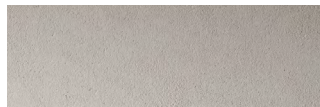
DRYVIT® FINISH OPTIONS | Choose from unlimited color and finish combinations!



AMERISTONE™



FERROS™



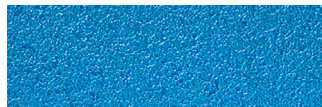
LYMESTONE™



QUARZPUTZ®



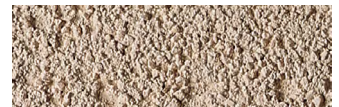
STONE MIST



REFLECTIT™ TEXTURE



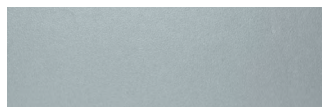
CUSTOM BRICK™



SANDPEBBLE™



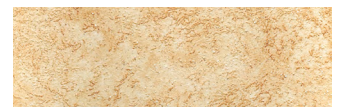
TERRANEO®



REFLECTIT™ SMOOTH



WOODGRAIN



TUSCAN GLAZE™

Tremco CPG Inc. | 3735 Green Road | Beacwood, OH 44122 | 401.822.4100 | dryvit.com

Tremco Construction Products Group (CPG) brings together Tremco CPG Inc. and its Dryvit and Nudura brands; Willseal; Prebuck LLC; Tremco Barrier Solutions, Inc.; Weatherproofing Technologies, Inc. and its Pure Air Control Services and Canam Building Envelope Specialists offerings; and Weatherproofing Technologies Canada, Inc.



Construction Products Group

Use of the ® symbol indicates registration with the US Patent & Trademark Office and the Canadian Intellectual Property Office.