



# TECHNICAL DATA SHEET

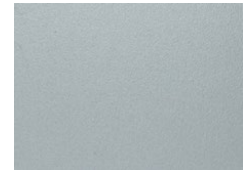
Reflectit™

100% Acrylic Coating Providing a  
Pearlescent Appearance  
DS705

---

## PRODUCT DESCRIPTION

Reflectit is a 100% acrylic coating for use over Dryvit textured finishes, Dryvit SkimIt™, and other approved substrates, and provides a glossy, pearlescent appearance.



---

## BASIC USES

Reflectit may be applied to interior and exterior approved substrates. Due to the variety of finish and application options possible, a local Dryvit representative should be consulted during the specification phase of the project to assist in developing an application technique that will meet the desired aesthetic expectations for the project. A mock-up shall be prepared by the applicator that will be applying the materials on the project and shall be approved by the owner/architect prior to application on the project. Reflectit can be applied over a new or existing Dryvit finish. (Specialty finishes such as Ameristone™, TerraNeo®, and Stone Mist® are excluded.)

**New Construction:** Newly-applied finishes must dry for a minimum of 24 hours under average conditions. The Dryvit finish color shall be color coordinated to the desired Reflectit. Dryvit Color Prime™ is not required for application over new Dryvit finish, but is recommended to equalize absorption of Reflectit into the finish and improve uniformity of appearance.

**Existing Weathered Finish:** Existing Dryvit finishes shall be cleaned in accordance with Dryvit publication DS152, Cleaning and Recoating, before applying color-coordinated Color Prime.

---

## FEATURES & BENEFITS

### FEATURES

- Realistic metal panel aesthetic
- Ideal for panelized delivery
- Standard colors
- Can be applied over textured finish

### BENEFITS

- Ability to emulate metal panel appearance at a significant savings
- Compresses project schedule
- Consistent formulas for shorten lead times
- Easy application

---

## PROPERTIES

**Drying Time:** Drying of Reflectit is dependent on the air temperature and relative humidity. Under average drying conditions [70 °F (21 °C), 55% R.H.], Reflectit will dry to the touch in 1/2 hour. When used as a coating in panel applications, do not handle panels for minimum 4-6 hours. Protect work from rain for at least 24 hours.

**Testing Information:** For individual test data on this product's properties, refer to the chart included in this document.

**Job Conditions:** Air and surface temperature for application of Reflectit must be 50 °F (10 °C) or higher and must remain so for at least 12 hours after application.

**Temporary Protection:** Shall be provided at all times until the Reflectit coating is dry and installation of permanent flashings, sealants, etc. are completed to protect the wall from inclement weather and other sources of damage.

## MIXING

Gently mix or stir Reflectit to a smooth, homogeneous consistency. Avoid introducing air into the coating. If mechanically mixing, use a Wind-lock B-M1 mixing paddle or equivalent powered at a low speed (400-500 RPM) using a variable speed drill. No water addition to Reflectit is necessary for either spray or roller application. To ensure color consistency, pails should be “boxed” when more than one batch of material will be used.

---

## APPLICATION

Reflectit may be applied using a spray gun, roller or brush. Spray application is the required application method over SkimIt and finely textured finishes, such as Sandpebble® Fine, Limestone™ or Freestyle® and finer, in order to avoid visible roller marks. A Binks 2001 or 2100 stainless steel spray gun is recommended for the spray application of Reflectit. Follow closely the SkimIt data sheet DS847 and Reflectit Application Instructions DS124 for roller and sprayer application. Brush application is only recommended on very small areas when use of roller or spray gun is not practical. It is recommended that either aesthetic or expansion joints be located so as to create a panel size of a minimum 2 ft x 2 ft (0.61 m x 0.61 m) to a maximum 5 ft x 5 ft (1.5 m x 1.5 m) [or 25 ft<sup>2</sup> (2.3 m<sup>2</sup>) with the vertical height not being more than 5 ft (1.5 m)] and that a contractor prepare a mock-up for approval by the architect prior to final specification.

### Spray Equipment:

- Binks 2001 or 2100 stainless steel spray gun with dual regulation (air and fluid) pressure tank
- Fluid nozzle 66SS
- Air nozzle 66SD

### Roller Equipment:

- Good quality nap roller designed for latex finishes
- Nap size up to 1 in (25 mm)
- Double pressure roller frame

**Brush:** Use a good quality 100% nylon bristle brush.

---

## COVERAGE

**Roller Application:** Approximately 527 ft<sup>2</sup> (49 m<sup>2</sup>) for two coats per 42 lb (18 kg) pail. WFT 15.22 mils, DFT 6.02 mils, Vol Solids 39.58%

**Spray Application:** Approximately 904 ft<sup>2</sup> (84 m<sup>2</sup>) over a smooth surface per 42 lb (18 kg) pail. Coverage will vary depending on the surface texture and porosity of the substrate. WFT 8.87 mils, 3.51 mils.

---

## STORAGE

Reflectit must be stored at a minimum of 50 °F (10 °C) and a maximum of 100 °F in tightly sealed containers protected from weather and out of direct sunlight.

The shelf life is 2 years from date of manufacture when properly stored in unopened pails.

---

## CLEAN UP

Clean tools with water while Reflectit is still wet.

---

## MAINTENANCE

All Dryvit products are designed to require minimal maintenance. However, as with all building products, depending on location, some cleaning may be required. See Dryvit publication DS152, Cleaning and Recoating.

---

## COLORS

Twelve standard colors of Reflectit and Color Prime are available as listed below:

COLOR NUMBER	COLOR	COLOR NUMBER	COLOR
250	Teal Magnolia	256	Mediterranean
251	Starry Night	257	Champagne
252	Hammered Copper	258	Barney
253	Cleopatra	259	Maize
254	Sierra Rose	260	Caribbean
255	Tin Man	261	Chili-Peller

Custom colors of Reflectit are possible and require a three (3) week lead time.

## CAUTIONS & LIMITATIONS

- Avoid applying Reflectit in direct sunlight. Always work on the shady side of the wall or protect the area with appropriate shading material.
- The contractor applying Reflectit shall be experienced in spraying or rolling high gloss coatings and shall have been trained by Dryvit. Field Service personnel in the proper application of Skimit™, Color Prime™ and Reflectit.
- Do not use Reflectit as a finish coat directly over reinforced base coat, concrete, masonry or stucco, unless approved in writing by Dryvit.
- Reflectit shall not be used below grade.
- Reflectit must not be used on exposed exterior horizontal surfaces. Minimum slope is 6 in 12 (27°). Maximum length of slope is 12 in (305 mm). Reflectit shall not be returned into sealant joints or other areas that will be in direct contact with sealant. Instead, a coat of Color Prime or Demandit® Smooth shall be applied over the base coat that will be in contact with the sealant.
- High gloss coatings will accentuate any imperfections in the underlying surface. Therefore, it is important that the underlying reinforced base coat and finish be applied in a manner that will minimize textural imperfections that may result in undesirable aesthetic results. It is required to apply base coat using the two pass method as described in Dryvit System Application Instructions.
- A site mock-up of sufficient size is required, [min. 8 ft x 8 ft (2.4 m x 2.4 m)].
- It is strongly recommended that when ordering this coating for a particular project, all pails required to complete that project be ordered at the same time.
- Special colors require a three (3) week lead time.
- Contact Dryvit Field Service Manager for proper application instruction.

### REFLECTIT COATING TESTING

PROPERTY	TEST METHOD	TYPICAL RESULTS	TYPICAL RESULTS
Freeze/Thaw Resistance	ASTM E 2485 (formerly EIMA Method 101.01)	60 cycles: No deleterious effects <sup>1</sup>	Passed 60 cycles
Accelerated Weathering	ASTM G 154	2000 hours: No deleterious effects <sup>1</sup>	3250 hours: No deleterious effects <sup>1</sup>
Exterior Exposure	Test Fence @ 60° angle – Southern Exposure	No deleterious effects <sup>1</sup>	45 months: No deleterious effects <sup>1</sup>
Surface Burning Characteristics	ASTM E84	ICC and ANSI/EIMA 99-A-2001 Flame Spread <25 Smoke Developed <450	Passed

<sup>1</sup>No cracking, checking, rusting, crazing, erosion, blistering, peeling, or delamination when viewed under 5x magnification.

Information contained in this product sheet conforms to the standard detail recommendations and specifications for the installation of Dryvit products as of the date of publication of this document and is presented in good faith. Dryvit assumes no liability, expressed or implied, as to the architecture, engineering or workmanship of any project. To ensure that you are using the latest, most complete information, contact Dryvit.

For more information on Dryvit or Continuous Insulation, visit [www.dryvit.com](http://www.dryvit.com).

Printed in USA. Issued 1.1.2022 Rev. 3.31.2026  
©Dryvit 2022  
DS705

Tremco Construction Products Group (CPG) brings together the Commercial Sealants & Waterproofing and Roofing & Building Maintenance divisions of Tremco CPG Inc.; Dryvit and Willseal brands; Nudura Inc.; Prebuck LLC; Tremco Barrier Solutions, Inc.; Weatherproofing Technologies, Inc.; Weatherproofing Technologies Canada, Inc.; and Pure Air Control Services, Inc.



[dryvit.com](http://dryvit.com) | 800.556.7752



Construction Products Group

3735 Green Rd. | Beachwood, OH 44122  
800.321.7906 | [tremcocpg.com](http://tremcocpg.com)