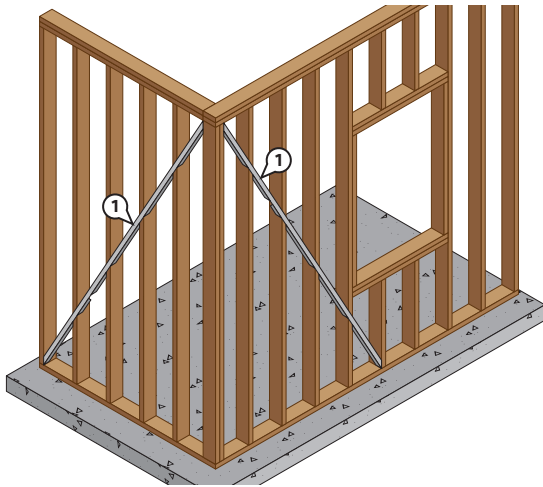
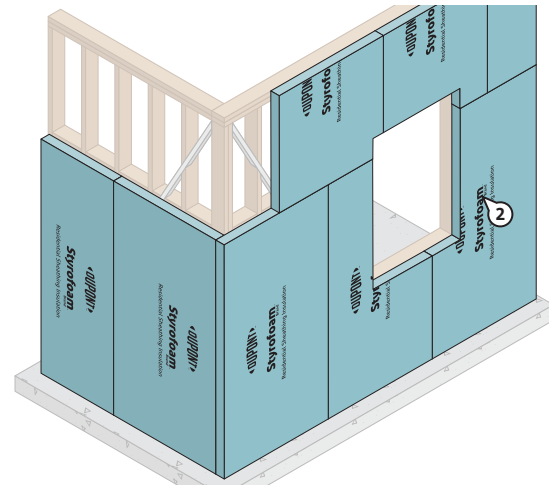


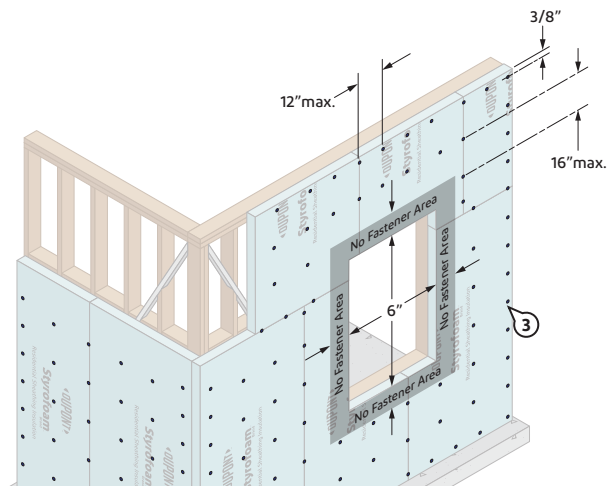
Installation of DuPont™ Styrofoam™ Brand XPS Insulation Products as a Weather-Resistive Barrier



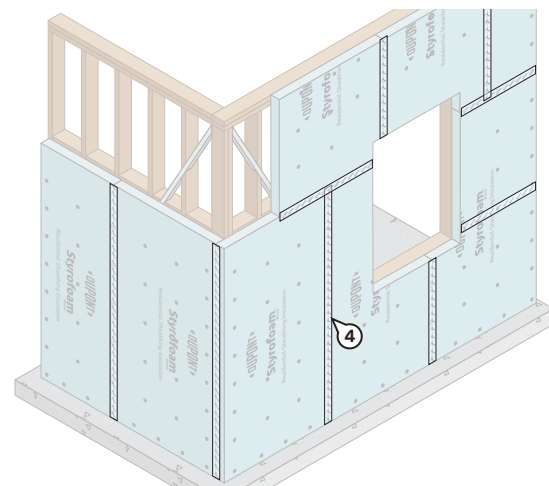
1. Install a code-acceptable wall bracing (e.g. diagonal metal strapping, let-in wood or wood structural sheathing), see [ICC ESR 2142](#) for more information. If wood sheathing is used, it should be covered by **Styrofoam™ Brand XPS Insulation Products** to provide full wall insulation. **NOTE: Styrofoam™ Brand XPS Insulation Products** are not structural panels.



2. Install **Styrofoam™ Brand XPS Insulation Products** with long edges in contact with one another and all panel edges bearing directly on framing members or blocking. **NOTE:** 4'x 8', 4'x 9' and 4'x 10' **Styrofoam™ Brand XPS Insulation Products** may be installed horizontally or vertically. 2' x 8' **Styrofoam™ Brand XPS Insulation Products** must be installed horizontally.

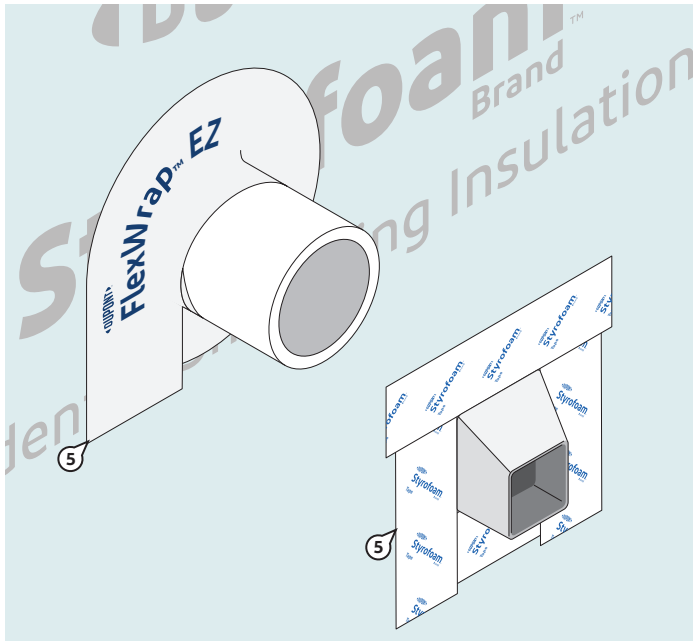


3. Secure **Styrofoam™ Brand XPS Insulation Products** using 3/8" head (9.5mm) galvanized nails, 1" crown (25.4mm) galvanized staples, 1" (25.4mm) head plastic cap nails or equivalent fasteners long enough to penetrate framing a minimum of 3/4". Fasteners should not be over-driven. **NOTE:** See [Helpful Hints](#) section for more information on fastening insulation boards.

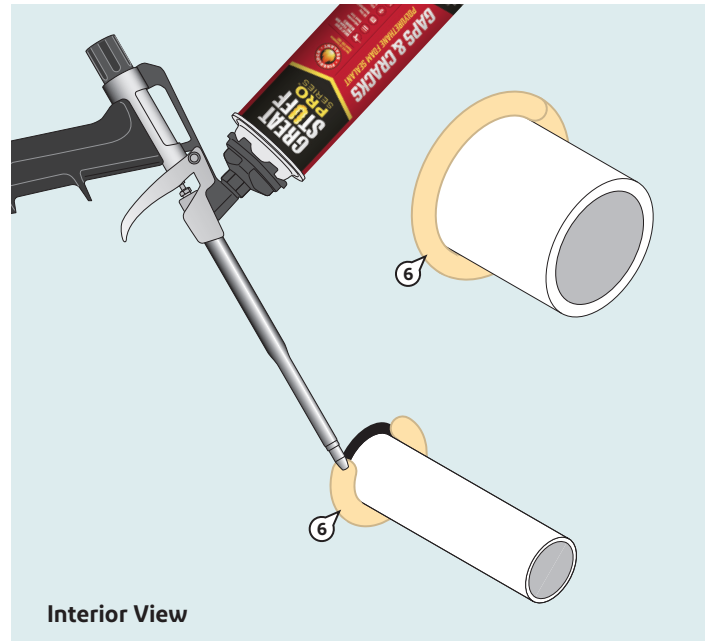


4. Tape all insulation joints (i.e., horizontal and vertical seams) using 2-7/8" (73 mm) wide **DuPont™ Styrofoam™ Brand Tape**.

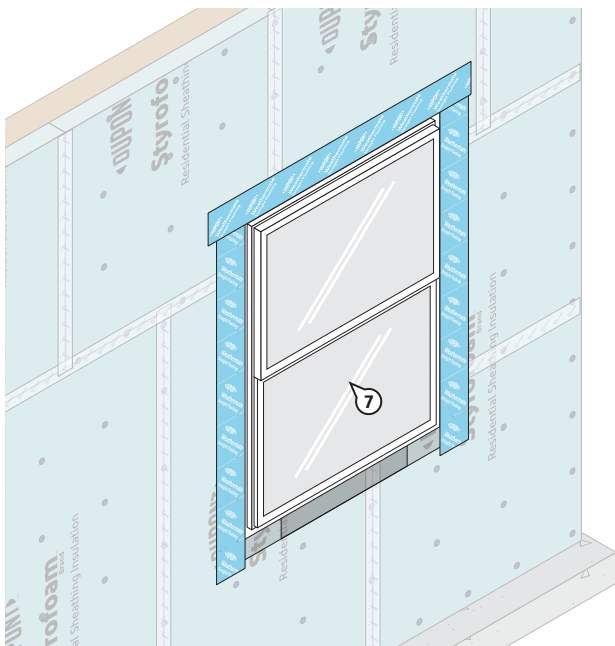
Installation of DuPont™ Styrofoam™ Brand XPS Insulation Products as a Weather-Resistive Barrier



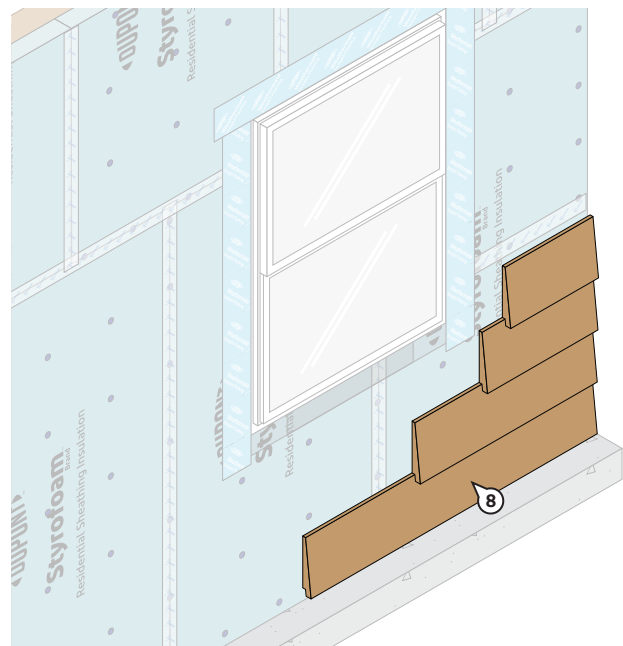
5. Tape all exterior penetrations (e.g., pipes and dryer vents) using 2–7/8" (73 mm) wide **DuPont™ Styrofoam™ Brand Tape**, **DuPont™ Weathermate™ Straight Flashing**, **DuPont™ FlexWrap™**, **FlexWrap™ EZ**, or other **DuPont Self-Adhered Flashing Products***.



6. Seal around the interior openings of exterior penetrations with **Great Stuff Pro™ Gaps & Cracks Polyurethane Foam Sealant**.



7. Install window per manufacturer's installation instructions.
NOTE: Fasteners for window installation must be long enough to penetrate at least 1-1/4" (31.8 mm) into the framing.



8. Install exterior cladding by fastening through the insulation and into the wood studs in accordance with the cladding manufacturer's instructions.

NOTE: When using **DuPont Self-Adhered Flashing Products** to flash an integral flanged window, refer to the [Integrating DuPont Building Envelope Solutions Products with DuPont Exterior Continuous Insulation](#) or other applicable DuPont Installation Guideline for detailed instructions.

***DuPont Self-Adhered Flashing Products** and **DuPont™ Weathermate™ Straight Flashing** should be installed when air and surface temperatures are above 40°F.

Installation of DuPont™ Styrofoam™ Brand XPS Insulation Products as a Weather-Resistive Barrier

Helpful Hints

- Use a utility knife and straight edge to trim the insulation board to conform to irregular wall angles, projections or wall surfaces less than board width or height.
- In stick-built construction, consider using 4' x 9' **DuPont Insulation Boards** to effectively cover the sill plates, floor/ceiling junctures, band box and headers in one easy application.
- Shakes or shingles can also be applied by installing furring strips or a plywood nailer base over the insulation and attaching the shakes or shingles in accordance with the manufacturer's instructions.
- Secure 4' x 8' boards 12" o.c. around the perimeter and 16" o.c. in the field or as required by the code authority having jurisdiction.
- Secure 2' x 8' boards using 3 fasteners per stud (12" o.c.) or as required by the code authority having jurisdiction.
- In locations where cap fasteners will be covered with tape or flashing (e.g., along a seam between panels), ensure that the cap fastener is fully covered.
- TRUFAST® Walls* Grip-Deck® Self-Drilling screws with 2" dia. Thermal-Grip FastCap™ washers are available for this installation method.
- **DuPont Self-Adhered Flashing Products** and **DuPont™ Weathermate™ Straight Flashing** should be installed when air and surface temperatures are above 40°F.



For more information about DuPont Performance Building Solutions, please call 1-833-338-7668 or visit us at building.dupont.com

NOTICE: No freedom from any patent owned by DuPont or others is to be inferred. Because use conditions and applicable laws may differ from one location to another and may change with time, Customer is responsible for determining whether products and the information in this document are appropriate for Customer's use and for ensuring that Customer's workplace and disposal practices are in compliance with applicable laws and other government enactments. The product shown in this literature may not be available for sale and/or available in all geographies where DuPont is represented. The claims made may not have been approved for use in all countries or regions. DuPont assumes no obligation or liability for the information in this document. References to "DuPont" or the "Company" mean the DuPont legal entity selling the products to Customer unless otherwise expressly noted. NO EXPRESS WARRANTIES ARE GIVEN EXCEPT FOR ANY APPLICABLE WRITTEN WARRANTIES SPECIFICALLY PROVIDED BY DUPONT. ALL IMPLIED WARRANTIES INCLUDING THOSE OF MERCHANTABILITY AND FITNESS FOR A PARTICULAR PURPOSE ARE EXPRESSLY EXCLUDED. The buyer assumes all risks as to the use of the material. Buyer's exclusive remedy or any claim (including without limitations, negligence, strict liability, or tort) shall be limited to the refund of the purchase price of the material. Failure to strictly adhere to any recommended procedures shall release DuPont de Nemours, Inc., and its affiliates, of all liability with respect to the materials or the use thereof. The information herein is not intended for use by non-professional designers, applicators or other persons who do not purchase or utilize this product in the normal course of their business.

© 2022 DuPont. DuPont™, the DuPont Oval Logo, and all trademarks and service marks denoted with ™, SM or ® are owned by affiliates of DuPont de Nemours, Inc. unless otherwise noted. Grip-Deck® and Thermal-Grip FastCap™ are trademarks or registered trademarks of TRUFAST® Walls (formerly Rodenhouse Inc.).

43-D101134-enNA-0422