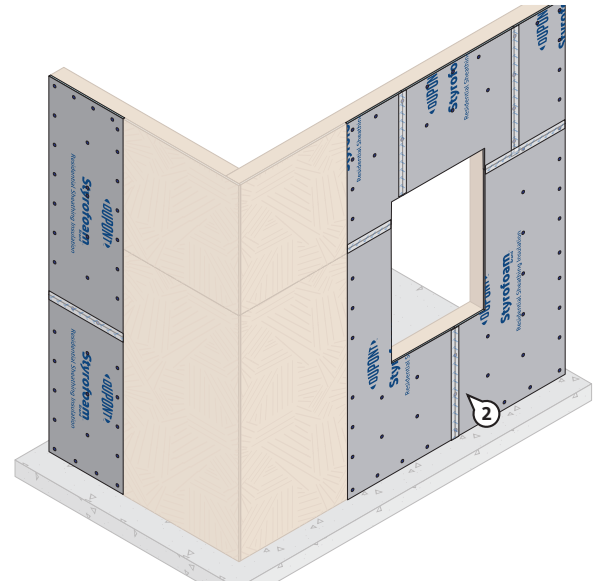
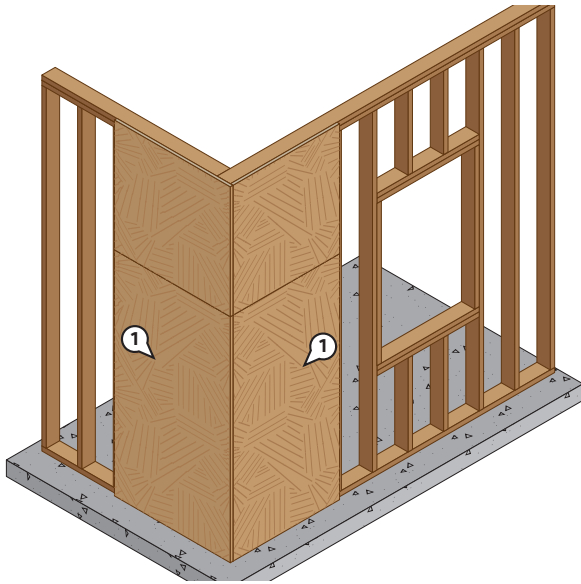
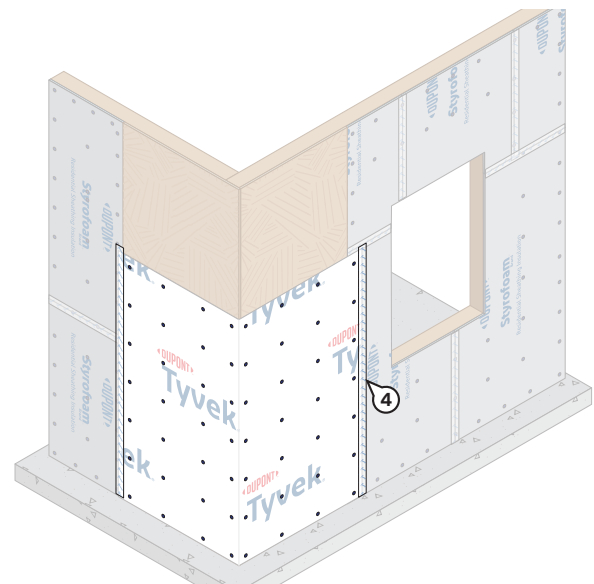
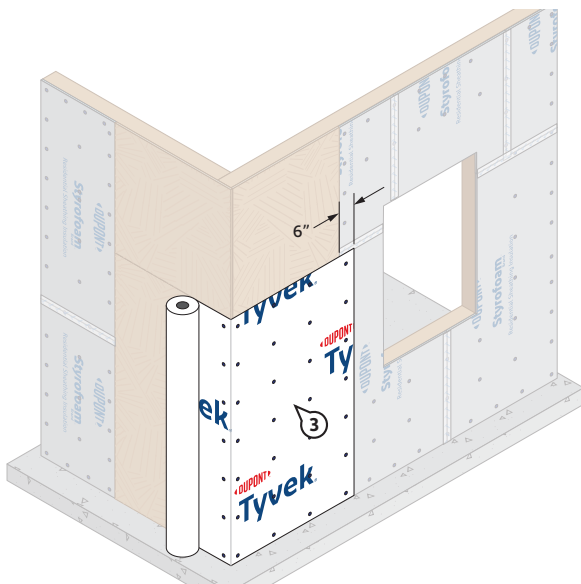


Installing DuPont™ Styrofoam™ Brand Insulation Products and DuPont™ Tyvek® Water-Resistive and Air Barriers (WRB) over Structural Corners/Areas



1. Install structural corners/areas per code.

2. Install 4'x 8', 4'x 9' and/or 4'x 10' **Styrofoam™ Brand Insulation Products** horizontally or vertically with long panel edges in contact with one another and bearing directly on the framing members. Abut the **Styrofoam™ Brand Insulation Products** against the structural corners/areas. Tape all insulation joints (i.e. horizontal and vertical seams) using 3-3/4" (96mm) wide **DuPont™ Styrofoam™ Brand Tape**.

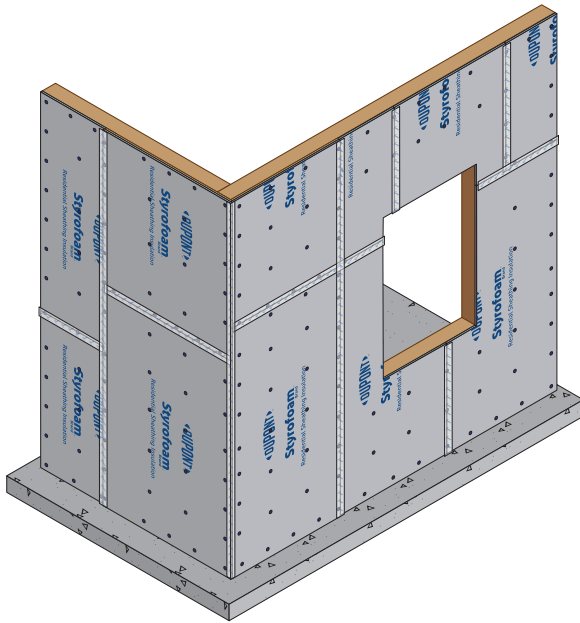


3. Install the **DuPont™ Tyvek® WRB**. Make sure there is a minimum 6" overlap of the **Tyvek® WRB** over the **Styrofoam™ Brand Insulation Product**. Secure the **Tyvek® WRB** to the stud or other nail-base material. Fasteners should be placed no closer than 6" and no farther than 18" on vertical stud lines. For more information, refer to the applicable **Tyvek® WRB** Installation Guideline(s) available at building.dupont.com.

4. Terminate the **Tyvek® WRB** to the **Styrofoam™ Brand Insulation Product**, using 3-3/4" (96mm) wide **Styrofoam™ Brand Tape**. **NOTE: DuPont™ Flashing Tape must be used** when the **Tyvek® WRB** is terminated to a stud or wood sheathing.

Installing DuPont™ Styrofoam™ Brand Insulation Products and DuPont™ Tyvek® Water-Resistive and Air Barriers (WRB) over Structural Corners/Areas

For Continuous Insulation Applications Only



To create a relatively flush board joint behind the cladding, use 1" **Styrofoam™ Brand Insulation Products** over the framing members and use 1/2" **Styrofoam™ Brand Insulation Products** over the OSB when using 1/2" OSB at the corners. **A DuPont™ Tyvek® WRB is not required in continuous insulation applications.** Refer to the Installation Bulletin [Installation of DuPont™ Styrofoam™ Brand XPS Insulation Products as a Weather-Resistive Barrier](#) for more information.

Helpful Hints

- Use a utility knife and straight edge to trim the insulation board to conform to irregular wall angles, projections or wall surfaces less than board width or height.
- In stick-built construction, consider using 4' x 9' **DuPont Insulation Boards** to effectively cover the sill plates, floor/ceiling junctures, band box and headers in one easy application.
- Shakes or shingles can also be applied by installing furring strips or a plywood nailer base over the insulation and attaching the shakes or shingles in accordance with the manufacturer's instructions.
- Secure 4' x 8' boards 12" o.c. around the perimeter and 16" o.c. in the field, or as required by the code authority having jurisdiction.
- Secure 2' x 8' boards using 3 fasteners per stud (12" o.c.), or as required by the code authority having jurisdiction.
- In locations where cap fasteners will be covered with tape or flashing (e.g., along a seam between panels), ensure that the cap fastener is fully covered.
- **DuPont™ Weathermate™ Straight Flashing** and **DuPont Self-Adhered Flashing Products** should be installed when air and surface temperatures are above 40°F.



For more information about DuPont Performance Building Solutions, please call 1-833-338-7668 or visit us at building.dupont.com

NOTICE: No freedom from any patent owned by DuPont or others is to be inferred. Because use conditions and applicable laws may differ from one location to another and may change with time, Customer is responsible for determining whether products and the information in this document are appropriate for Customer's use and for ensuring that Customer's workplace and disposal practices are in compliance with applicable laws and other government enactments. The product shown in this literature may not be available for sale and/or available in all geographies where DuPont is represented. The claims made may not have been approved for use in all countries or regions. DuPont assumes no obligation or liability for the information in this document. References to "DuPont" or the "Company" mean the DuPont legal entity selling the products to Customer unless otherwise expressly noted. NO EXPRESS WARRANTIES ARE GIVEN EXCEPT FOR ANY APPLICABLE WRITTEN WARRANTIES SPECIFICALLY PROVIDED BY DUPONT. ALL IMPLIED WARRANTIES INCLUDING THOSE OF MERCHANTABILITY AND FITNESS FOR A PARTICULAR PURPOSE ARE EXPRESSLY EXCLUDED. The buyer assumes all risks as to the use of the material. Buyer's exclusive remedy or any claim (including without limitations, negligence, strict liability, or tort) shall be limited to the refund of the purchase price of the material. Failure to strictly adhere to any recommended procedures shall release DuPont de Nemours, Inc., and its affiliates, of all liability with respect to the materials or the use thereof. The information herein is not intended for use by non-professional designers, applicators or other persons who do not purchase or utilize this product in the normal course of their business.

© 2024 DuPont. DuPont™, the DuPont Oval Logo, and all trademarks and service marks denoted with ™, SM, or ® are owned by affiliates of DuPont de Nemours, Inc. unless otherwise noted. Grip-Deck® and Thermal-Grip FastCap™ are trademarks or registered trademarks of TRUFAST® Walls (formerly Rodenhouse Inc.).