



BUILDING TRUST

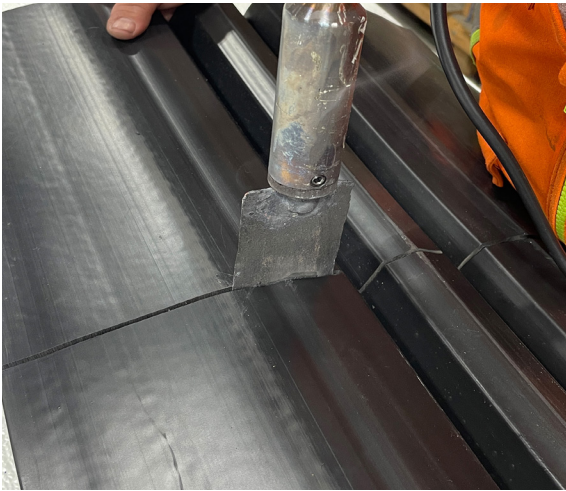


## BUTT SPLICE PROCEDURE BG System

All field butt splices shall utilize Sika Emseal's weld kit.  
Weld Kit is available for purchase or rent.

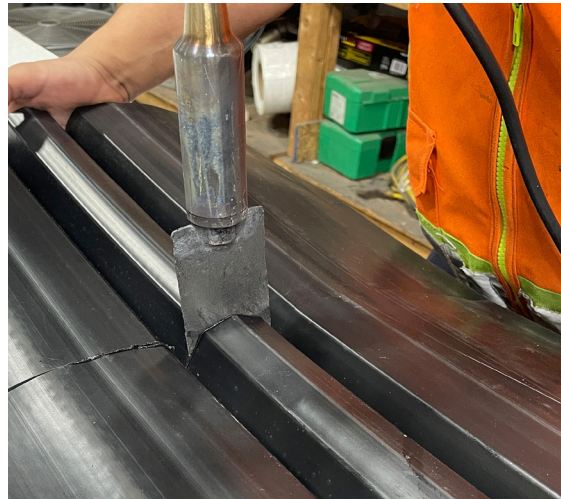
### Step 1:

With welding plate hot, heat both sides of one chamber at a time, ensuring to align edges. Remove plate and press and hold together until cooled.



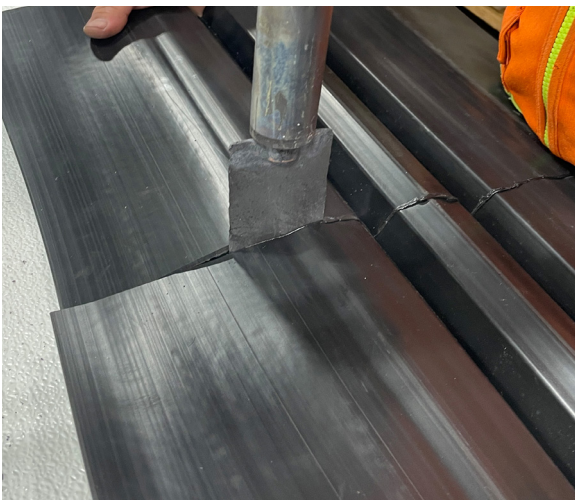
### Step 2:

Repeat on next chamber.



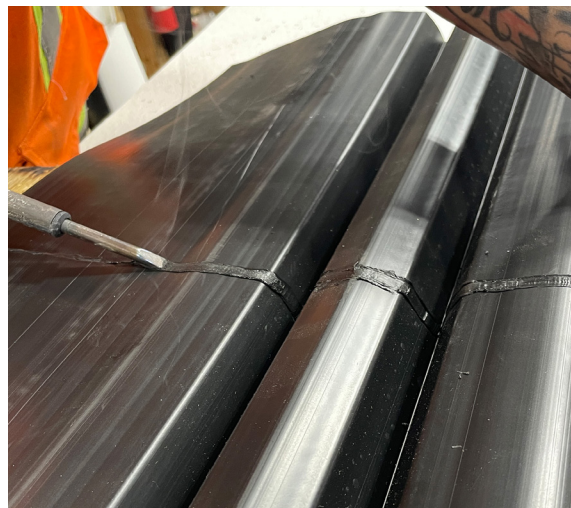
### Step 3:

Repeat from chamber edge to both outer flange edges.



### Step 4:

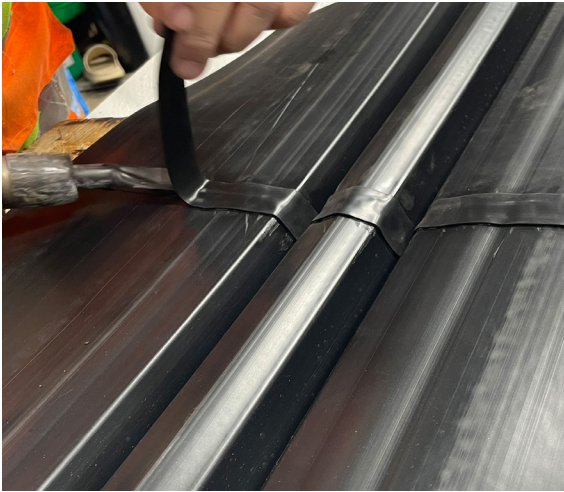
Repeat steps 1-3 on the bottom of the gland, then smooth butt weld line with chisel tip welder.



Do not install this material until all members of your crew have read and understand the [Installation Instructions](#). If you do not understand any part of these instructions CALL SIKA EMSEAL at 1-800-526-8365.  
NOTE: Example below is shown with BG-0400 extrusion.

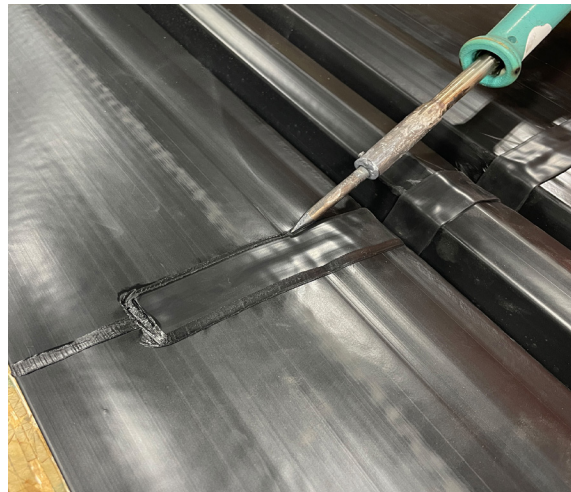
**Step 5:**

Starting on the top of the gland, cut and weld 1" (25mm) wide reinforcing strap over butt weld, to 2" (50mm) shy of outer flange edge.



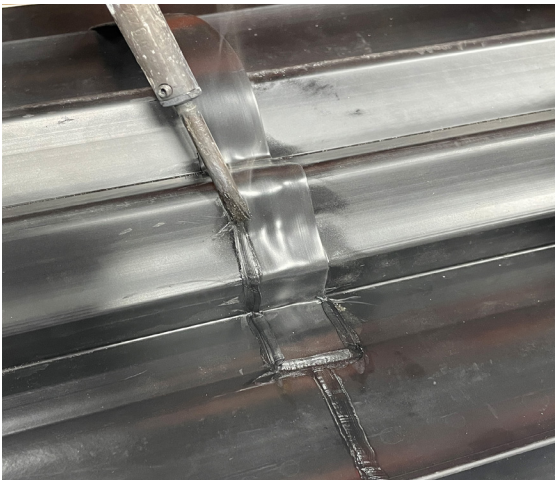
**Step 6:**

Smooth strap edge with chisel tip welder.



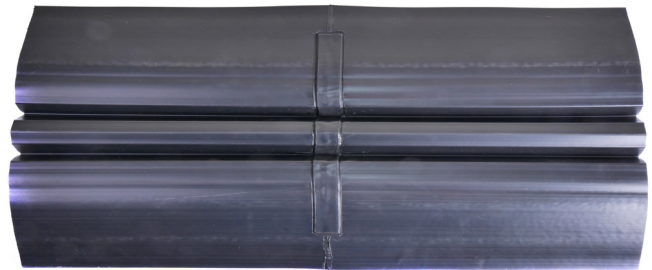
**Step 7:**

Repeat steps 5 and 6 on bottom of gland, with the reinforcing strap extending 1" (25mm) beyond the edge of the outer chamber.

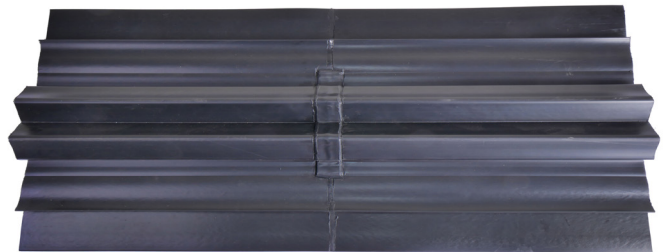


**Finished Butt Splice:**

**Top:**



**Bottom:**



**EMSEAL JOINT SYSTEMS, LTD**  
25 Bridle Lane  
Westborough, MA 01581 USA  
Phone: 508.836.0280  
Fax: 508.836.0281  
[www.emseal.com](http://www.emseal.com)

**EMSEAL, LLC**  
111 Royal Group Crescent  
Woodbridge, ON L4H 1X9 Canada  
Phone: +1-416-740-2090  
Fax: +1-416-740-0233  
[www.emseal.com](http://www.emseal.com)

**SIKA CORPORATION**  
201 Polito Avenue  
Lyndhurst, NJ 07071 USA  
Phone: +1-800-933-7452  
Fax: +1-2019336225  
[www.usa.sika.com](http://www.usa.sika.com)

**BG System Butt Splice Procedure**  
Sika Emseal BG System  
July 2023 Version SE-2.0



**BUILDING TRUST**

