



COLORSEAL-ON-A-REEL

DO NOT INSTALL THIS MATERIAL UNTIL ALL MEMBERS OF YOUR CREW HAVE READ AND UNDERSTAND THESE INSTRUCTIONS AND ALL RELEVANT SAFETY DATA SHEETS. IF YOU DO NOT UNDERSTAND ANY PART OF THESE INSTRUCTIONS CALL EMSEAL AT 1-800-526-8365

INSTALL DATA

Installation Equipment & Material Storage

In addition to masonry tools needed to remove joint obstructions or adjust joint width as necessary the following are needed:

- Tape measure
- Long-bladed utility knives
- 10-ounce caulking gun
- Caulk knives
- Acetone & lint-free rags

Cold Days: Store sealant, off the floor, inside at above 68°F (20°C). It will recover slower when cold and faster when warm.

Very Hot Days: Keep sealant out of direct sun when temperatures are greater than 60°F (15°C) until immediately prior to

Step 1: Joint Prep

- Ensure joint faces are parallel and have sufficient depth to receive the full depth of the size(s) of COLORSEAL-ON-A-REEL being installed **plus** at least 1/4-inch (6mm).
- Repair spalled, irregular or unsound joint surfaces using accepted industry practices for repair of the substrates in question. Remove protruding roughness to ensure joint sides are smooth.
- Remove residues of old sealants.



- Apply solvent or other agent suitable for use on the substrates in question to clean, lint-free rags.
- Wipe joint faces to ensure joint sides are free of dust, previous sealant, oils, grease, etc.

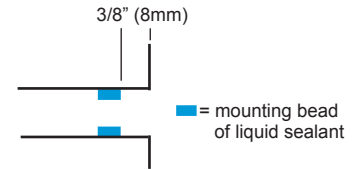
- Ensure joint sides are dry of solvent or cleaning agent prior to installation.



Step 2: Apply Installation Sealant Bead



- Cut the tube tip to provide a 1/4" opening in the nozzle.
- Pierce the tube foil to allow the sealant to flow.
- Load the tube into the caulking gun.



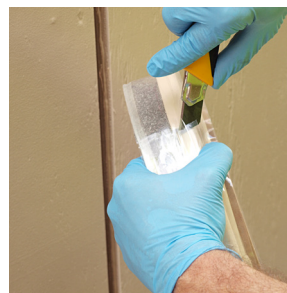
- Gun a 1/4" (6mm) wide mounting bead of sealant onto each joint face, about 3/8" (8mm) back from the joint edge.



- Strike the mounting bead of liquid sealant with a caulk knife to ensure that it is continuous, even, and properly bonded to the substrate.

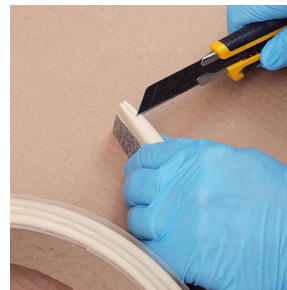
Step 3: Select and Open Material

- Open a box marked with a material size to match the joint size.
- Remove a reel from box



- Cut the packing tape.
NOTE: Be sure to cut away from the product so you don't slice into the side of the COLORSEAL-ON-A-REEL.

- Peel back the packing tape and release liner at the beginning of the reel.



- Extend the blade on your long-bladed utility knife.
- Using a back and forth "sawing" motion, square off the end of the material.

Step 4: Wet Seal the Starter End



- On the starter piece, apply a bead of sealant along the silicone coating

- Uncoil the first end from the reel.



- Insert the end into the bottom of the joint.

Step 5: Insert Material Into Joint

- Work your way along the joint pushing on the material while inserting it.



- Remove the release liner as you go.

- REMEMBER: ALWAYS PUSH, Never Pull. Do Not Stretch the material.
- By pushing on the material it will "snake" into the joint from side to side.
- As it expands to fill the joint, it will also push along its length ensuring the joints and ends are a tight fit.



Cut Material Slightly Longer Than Needed



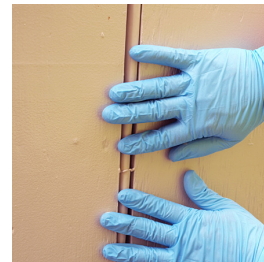
- Cut each run of material about 3/8" (8mm) longer than needed.
- "Snake" the excess into each run.

Joining Straight Lengths



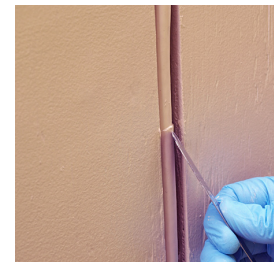
- At the end of a roll, leave the end of the material sticking out of the joint about 3/4" (20mm).
- As in Step 4, apply a bead of sealant along the silicone edge.

- Open another reel, square off the end, and join it to the piece sticking out of the joint.
- Push pieces firmly together.



- Install the rest of the joint run then come back and push the join into the joint.

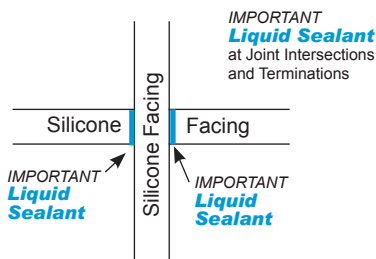
- Tool away the excess joining sealant and blend the join.



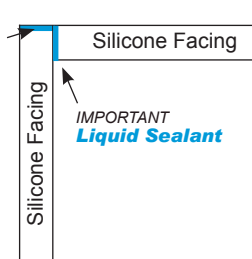
NOTE: For HORIZONTAL applications -- finishing corner beads of silicone must be applied and tooled at both top edges.

Joins at Intersections

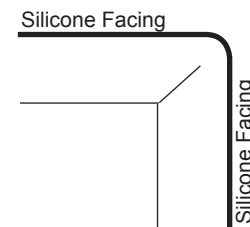
Cross Transition
(elevation)



Corner Transition
(elevation)

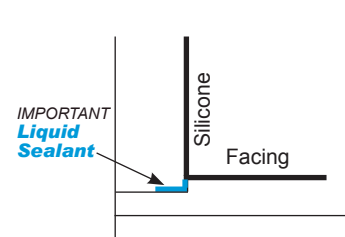


Outside Corner Transition
(side view)



Notch out the back and bend it to 90-degrees.

Inside Corner Transition
(side view)



Notch the top of lower piece. Join with liquid sealant.