

PRODUCT CATALOG

Watertight / Fire Rated / Sound Dampening
Insulating / Energy Efficient / Seismic / Trafficable



SIKA EXPANSION JOINTS COMMERCIAL AND ARCHITECTURAL SOLUTIONS

Emseal® ■ **Wabo®**

BUILDING TRUST



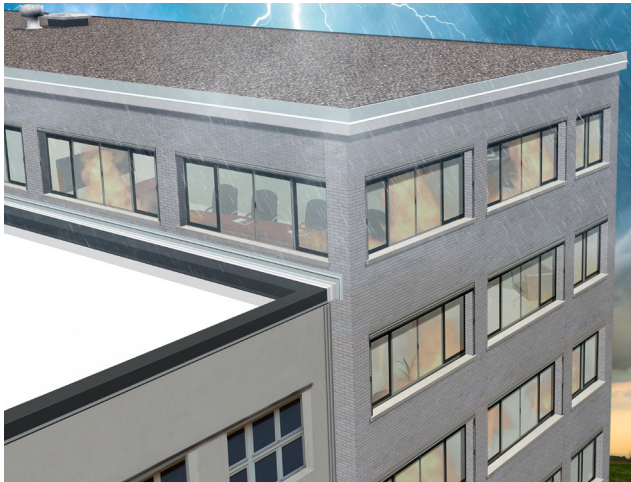
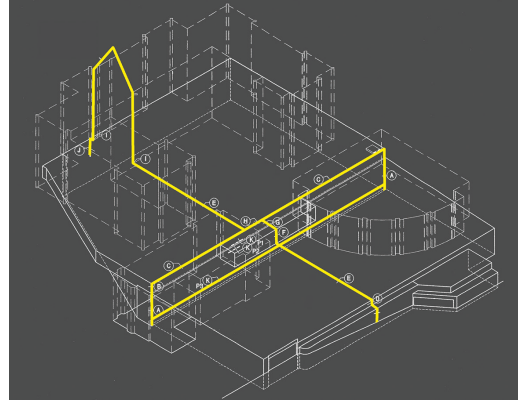
COMMERCIAL EXPANSION JOINTS

Emseal® ■ Wabo®

3D Collaborative Expansion Joint Design

At Sika Emseal, we believe that watertight, trouble-free expansion joints start with smart design—and that begins in 3D. Our collaborative, three-dimensional approach to expansion joint design integrates all project stakeholders—architects, engineers, contractors, and fabricators—ensuring full coordination from concept to installation. This comprehensive process results in joint systems that are not only functional but integrated into the building envelope.

A core principle behind every Sika Emseal solution is *Continuity of Seal*. Our factory-fabricated, precision-engineered transitions ensure the seal remains intact through changes in plane, direction, and material. This approach delivers watertightness throughout the entire joint system—including corners, tees, and complex intersections—minimizing the risk of failure and simplifying installation.



Transitions & Terminations

Sika Emseal's factory-fabricated expansion joint transition solutions are designed to maintain watertight, airtight, sound-dampened, insulated, and fire-resistance integrity through every change in plane, direction, and condition. Unlike field-fabricated alternatives, these pre-manufactured transitions are created under controlled conditions to ensure consistent quality and performance. By eliminating guesswork and variability on-site, they simplify installation, reduce labor time, and virtually eliminate the risk of leaks at critical connection points such as corners, curbs, and terminations. Central to Sika Emseal's *Continuity of Seal* philosophy, these transitions are essential for delivering reliable, durable joint systems that perform over the life of the structure.

US Patents: 9,850,662 | 10,851,542 | 9,200,437
10,066,387 | 10,422,127 | 10,570,611



Sika Emseal's Commitment

Sika Emseal's commitment to 3D design and pre-planned coordination enhances constructability and reduces installation errors. By visualizing and addressing transitions during the design phase, our expansion joint systems deliver long-term performance and reliability.

Specify Emseal and build with confidence—achieve continuity, achieve performance.

Color Coordination for Architectural Design

Sika Emseal offers a comprehensive palette of sealant-coated, precompressed foam expansion joint systems—such as Seismic Colorseal®, Emshield® WFR, and QuietJoint—engineered to blend into architectural finishes. These systems are available in a wide range of factory-applied colors using our standard high-performance silicone sealant, **Sikasil WS-295**. Optionally, our foam systems can be coated in Dowsil 790 (Consult Sika Emseal for pricing and availability). Dual-sided products (such as Seismic Colorseal-DS or Emshield WFR2) can be manufactured with different interior and exterior color faces, providing designers with unmatched flexibility to meet both aesthetic and performance criteria.

Additionally, Sika Emseal has a **custom color program** for the sealant coated systems. Custom colors should be reviewed and approved by Sika Emseal before placing an order. All custom colors should be provided by the customer and shipped to our factory for manufacturing.

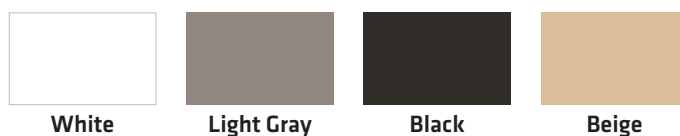
The **Wabo® interior and exterior systems** that include a rubber sealing gland are offered in the four standard colors shown below.

Precompressed Foam Sealants | *Standard Colors*

Sikasil® WS-295



Wabo® Gland Seal Colors



Colors on this sheet are close approximations of actual colors and intended for guidance only. Contact your Sika Emseal distributor to request physical samples for accurate matching. Users should confirm color meets their requirements.

For more information on color options, visit emseal.com:



Commercial Expansion Joint Solutions

Exterior Walls

Seismic Colorseal® / Colorseal®-On-A-Reel / SafeReseal® / Backerseal	5
Emshield® WFR / SecuritySeal® SSW / Wabo®FireFlex	6
Wabo®WeatherSeam / Wabo®SeismicCover	7

Decks - Parking

DSM / SJS / Horizontal Colorseal® / DSM-DS	8
Thermafex / WaboCrete® Membrane Gen II	9
Emshield® DFR / SecuritySeal® SSF / SJS-FR / Wabo®FireFlex	10
Wabo®ElastoFlex / Wabo®SafetyFlex / Wabo®Seismic SafetyFlex / Wabo®SeismicSpan	11

Split-Slab

DSM-FP / SJS-FP	12
DFR-FP / SJS-FP-FR / Migutan-FP / Roofjoint	13

Roofing

Roofjoint / Wabo®RoofCover	14
----------------------------	-----------

Below Grade

BG	15
----	-----------

Immersed

Submerseal / Chemseal / DSF	16
-----------------------------	-----------

Interior Floors

SJS-FR-NB / SJS-FR-Inlay / SJS-FR	17
Wabo®CorridorWrap / Wabo®FastFloor / Wabo®HingeMount / Wabo®SeisMaxPlus / Wabo®SeismicFloor	18
Wabo®SeismicPan / Migutrans SFS / Migutec FGH	19

Interior Walls

QuietJoint / Wabo®Contour II / Wabo®CorridorWrap / Wabo®SeisMaxPlus	20
Wabo®SeismicCover / Wabo® WeatherSeam	21

Single Source Warranties

Sikalastic® RoofPro / Hydrotech MM6125®	
Sarnafil® and Sikaplan® / Sikalastic® DeckPro	22



Seismic Colorseal®

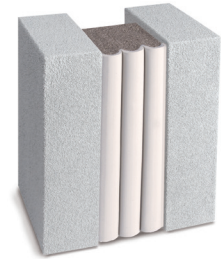
WATERTIGHT / PRIMARY SEAL
1/2" TO 10" (12 – 250 MM) JOINT GAPS

Description

Seismic Colorseal is a silicone-coated, precompressed, primary seal that is used in structural, high-movement joints in virtually any substrate. It is ideally suited for watertightness in vertical structural, seismic and abutment joints in the vertical plane. Available in a dual-sided (Seismic Colorseal-DS) option for finished seal on both sides of the wall.

Advantages

- Thermally insulating
- Acoustic dampening
- Conforms to joint gap irregularities
- Non-invasive anchoring
- Wide range of colors
- +/- 50% Movement (100% Total)



Colorseal®-On-A-Reel

WATERTIGHT / PRIMARY SEAL
1/2" TO 1 1/4" (12 – 30 MM) JOINT GAPS

Description

Colorseal-on-a-Reel is a watertight silicone-coated, precompressed, primary seal for smaller joints. It's shipped on a reel for rapid installation into 1/2 to 1 1/4-inch wide (12 - 30mm) expansion gaps. Reel-packaging, in contrast to 'stick' packaging, reduces waste, lowers production costs, makes handling easier, and can be installed rapidly. The low installed cost makes this system a price-effective alternate to 'caulk and backer rod'.

Advantages

- Rapid installation
- Ships on 10-foot reels
- Conforms to joint gap irregularities
- Non-invasive anchoring
- Wide range of colors
- +30% / -50% Movement (80% total)



SafeReseal®

WATERTIGHT / PRIMARY RETROFIT SEAL
1/2" TO 1 1/4" (12 – 30 MM) JOINT GAPS

Description

SafeReseal is a joint sealing system for EIFS, precast, concrete, and virtually any substrate. It's a safer, grindless, dustless, quiet, primerless, tensionless, paintable, retrofit joint sealant that installs over old sealant residue without the requirement for grinding to completely remove old sealant.

Advantages

- Conforms to joint gap irregularities
- Grindless preparation
- Paintable
- Non-invasive anchoring
- +/- 50% Movement (100% Total)



Backerseal®

WATERTIGHT / SECONDARY SEAL
1/2" TO 6" (12 – 150 MM) JOINT GAPS

Description

Backerseal is an economical preformed expanding foam sealant that provides watertight secondary sealing in applications behind conventionally installed liquid sealant and backer rod or directly behind field-applied low modulus liquid sealants.

Advantages

- Conforms to joint gap irregularities
- Thermally insulating
- Acoustic dampening
- Non-invasive anchoring
- +/- 25% Movement (50% Total)





Emshield® WFR1 / WFR2 / WFR3

1, 2 or 3 HOUR UL/ULC FIRE-RATED / WATERTIGHT
1/2" TO 6" (12 – 150 MM) JOINT GAPS

US Patents: 10,941,562 | 10,934,704 | 10,934,702

Description

Emshield® WFR1, WFR2 and WFR3 are single-unit, fire-rated expansion joints which provide water protection, sound attenuation, thermal insulation, color coordination, and accommodate structural joint movement. WFR1 (Wall, Fire-Rated 1-Hour), WFR2 (Wall, Fire-Rated 2-Hours) and WFR3* (Wall, Fire-Rated 3-Hours) continue the line of breakthrough, multi-function, structural expansion joint materials from Sika Emseal. Certified by Underwriters Laboratories (UL) to the rigors of UL and ULC 2079.

Advantages

- 1, 2, or 3-hour fire-rating
- Watertight
- Thermal insulating
- Acoustic dampening
- Conforms to joint gap irregularities
- Non-invasive anchoring
- Wide range of colors
- Up to +/- 50% Movement (100% Total)



SecuritySeal® SSW2

PICK-RESISTANT / 2 HOUR UL/ULC FIRE-RATED / WATERTIGHT
1/2" TO 6" (12 – 150 MM) JOINT GAPS

US Patents: 10,941,562 | 10,934,704 | 10,934,702

Description

Emshield® SecuritySeal® SSW2 is a pick-resistant, watertight, 2-hour fire-rated, expansion joint for vertical applications requiring a hardened tamper-resistant surface. Institutional walls found in prisons, detention centers, mental and psychiatric hospitals, school facilities, and day-care centers are some of the many venues where SecuritySeal SSW2 is preferred.

Advantages

- Pick-resistant
- 2-hour fire-rating
- Watertight
- Thermal insulating
- Acoustic dampening
- Conforms to joint gap irregularities
- Non-invasive anchoring
- +/- 50% Movement (100% Total)



Wabo® FireFlex (VFF)

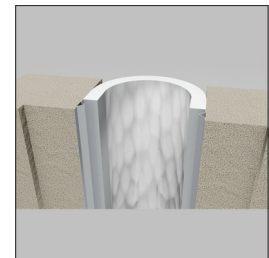
UL FIRE-BARRIER / VERTICAL FIRE BLANKET
1/2" TO 20" (12 – 510 MM) JOINT GAPS

Description

A seismic fire barrier expansion joint system, Wabo® FireFlex (VFF) is a fire resistive blanket for repair, retrofit, and new installation in wide structural expansion joints and construction joints in vertical plane applications.

Advantages

- Cycle tested to exceed ASTM E1399
- 2-hour fire-rating for joints up to 20-inches (510mm) wide
- No liquid caulk or sealant required for installation
- +/- 50% Movement (100% Total)



Emshield DFR/WFR CE

CE MARKED, EN-1366-4 CERTIFIED / WALL & DECKS
1/2" TO 4" (12 – 100 MM) JOINT GAPS

Description

Emshield DFR / WFR CE is a 4-hour fire resistant movement joint for walls and decks. Tested by CSTB France and certified by European Technical Assessment (ETA) DFR/WFR CE is suitable for European and other markets requiring CE marking.

Advantages

- 4 hour fire-rating
- EN-1366-4 certified
- Watertight
- Thermal insulating
- Acoustic dampening
- Conforms to joint gap irregularities
- Non-invasive anchoring
- +/- 50% Movement (100% Total)





Wabo®WeatherSeam (WSW)

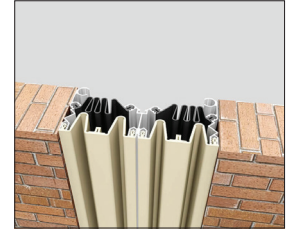
WIDE WALL JOINTS
10" TO 24" (250 – 600 MM) JOINT GAPS

Description

A seismic building expansion joint system for interior and exterior walls and ceilings, Wabo®WeatherSeam is weather resistant and installed flushed with the finished substrates. Provided for joint widths up to 24" wide to accommodate seismic joint openings.

Advantages

- Weather resistant
- Thermal barrier
- Flush mounted
- Multi-directional/Seismic movement capable
- Range of colors
- Movement of Total 100% of nominal size



Wabo®Seismic Cover (WFE, WFX)

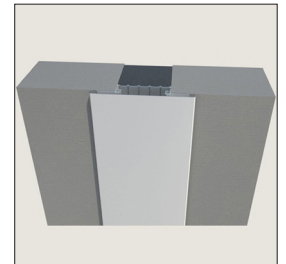
WIDE WALL JOINT COVER
10" TO 24" (250 – 600 MM) JOINT GAPS

Description

A seismic wall expansion joint cover, Wabo®SeismicCover is an exterior and interior wall system designed to accommodate both thermal and multi-directional movement. The system is installed on the exterior or interior of a building and provides a simple, attractive and durable solution for areas exposed to the general public and possible vandalism.

Advantages

- Weather resistant
- Surface mounted
- Fire-rated by adding Emshield® WFR
- Watertight by adding Seismic Colorseal®
- No visible hardware
- Multidirectional seismic movement



Decks & Parking Solutions



DSM System

WATERTIGHT / TRAFFIC DURABLE
1/2" TO 4" (12 – 100 MM) JOINT GAPS

Description

A watertight expansion joint, the DSM System is for use in horizontal plane deck applications. Traffic durable, joint-face adhered and precompressed, DSM System is a primary seal for deck expansion joints. DSM's toughness and resilience come from its modified-acrylic impregnation and tensionless highway-grade silicone bellows coating.

Advantages

- Watertight
- Rapid installation
- Conforms to joint gap irregularities
- Non-invasive anchoring
- ADA compliant
- Movement of +/- 50% (Total 100%) of nominal size



SJS Seismic Joint System

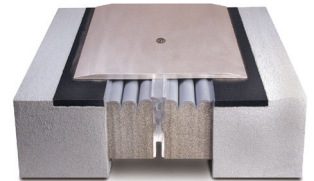
WATERTIGHT / TRAFFIC DURABLE
2" TO 16" (50 – 400 MM) JOINT GAPS

Description

SJS is a watertight, high-movement, sound-dampened coverplate system for large and seismic expansion joint gaps. SJS is constructed from two horizontal joints preassembled in parallel adjacent to a heavy-duty spline. The system contains no metal embeds, self-centering bars, or other unnecessary metal components.

Advantages

- Watertight
- Eliminates need for gutters
- Easy installation
- Non-invasive anchoring
- Available for wide joints
- Movement of +/- 50% (Total 100%) of nominal size



Horizontal Colorseal®

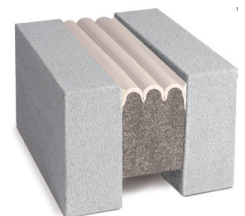
WATERTIGHT / NON-TRAFFIC APPLICATIONS
1/2" TO 8" (12 – 200 MM) JOINT GAPS

Description

Horizontal Colorseal is a high-movement silicone bellows system for deck applications used as a primary seal typically without a coverplate in non-traffic areas such as perimeters in decks or roofs. It can be used under a coverplate when pedestrian or vehicular traffic is expected.

Advantages

- Watertight
- Rapid installation
- Conforms to joint gap irregularities
- Non-invasive anchoring
- New or retrofit construction
- Movement of +/- 50% (Total 100%) of nominal size



DSM-DS

WATERTIGHT / DUAL-SIDED SILICONE BELLOWS
1/2" TO 4" (12 – 100 MM) JOINT GAPS

Description

DSM-DS is a highly resilient, double sided, silicone faced, precompressed sealant that has proved over the years the ability to solve difficult joint sealing problems where other systems have failed or are not suitable. It is ideal for new installations as well as expansion joint repair or retrofit jobs.

Advantages

- Watertight
- Rapid installation from positive or negative side
- Conforms to joint gap irregularities
- Non-invasive anchoring
- New or retrofit construction
- +/- 50% Movement (Total 100%)





Thermaflex®

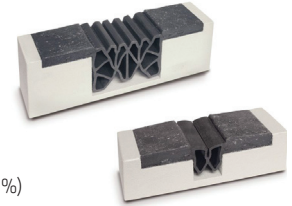
WATERTIGHT / WING JOINT
1" TO 5 1/2" (25 – 140 MM) JOINT GAPS

Description

Thermaflex is a blockout mounted wing joint system consisting of heat-weldable thermoplastic-rubber sealing glands with punched flanges embedded in a high-strength, flexible, impact-absorbing elastomeric concrete nosing material. Available in TM (dual-cell) and TCR (multi-cell) gland configurations. Ideally suited for parking decks.

Advantages

- Watertight
- Blockout Mounted
- Impact absorbing nosing
- Non-invasive anchoring
- ADA compliant
- Up to or in excess of +/- 50% Movement (Total 100%)



WaboCrete® Membrane Gen II

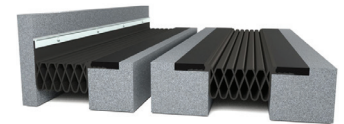
WATERTIGHT / HIGH-MOVEMENT / WING JOINT
1" TO 6" (25 – 150 MM) JOINT GAPS

Description

WaboCrete® ME Gen II is a high-movement capable blockout mounted wing joint system with heat-weldable thermoplastic-rubber sealing glands with punched flanges embedded in a high-strength, flexible, impact-absorbing elastomeric concrete nosing material. Ideally suited for parking decks with high structural movement.

Advantages

- Watertight
- Blockout Mounted
- Impact absorbing nosing
- Non-invasive anchoring
- ADA compliant
- Up to or in excess of +/- 50% Movement (Total 100%)



Emshield® DFR2 / DFR3

WATERTIGHT / TRAFFIC DURABLE / 2 or 3-HOUR UL/ULC FIRE RATED
1/2" TO 4" (12 – 100 MM) JOINT GAPS

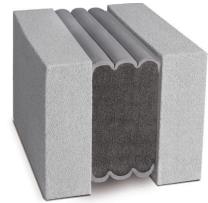
US Patents: 10,941,562 | 10,934,704 | 10,934,702

Description

Emshield® DFR2 and DFR3 are single unit fire-rated, traffic durable, high movement and watertight expansion joints. They provide a watertight, clean handling, UV stable, non-staining, low-temperature-flexible, high-temperature stable, traffic durable and fire-rated joint seal in a single installation

Advantages

- 2 or 3-hour fire-rating
- Watertight
- Acoustic dampening
- Non-invasive anchoring
- Easy installation
- Up to +/- 50% Movement (100% Total)



Emshield® SecuritySeal® SSF2 / SSF3

PICK-RESISTANT / WATERTIGHT / 2 or 3-HOUR UL/ULC FIRE RATED
1/2" TO 4" (12 – 100 MM) JOINT GAPS

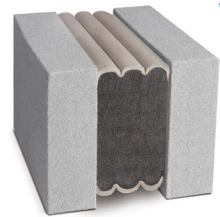
US Patents: 10,941,562 | 10,934,704 | 10,934,702

Description

Emshield® SecuritySeal® SSF2 and SecuritySeal® SSF3 are pick-resistant, watertight, 2-hour (SSF2) and 3-hour (SSF3) fire-rated expansion joints for horizontal applications requiring a hardened tamper-resistant surface.

Advantages

- Hardened pick-resistant surface
- 2 or 3-hour fire-rating
- Watertight
- Acoustic dampening
- Conforms to joint gap irregularities
- Non-invasive anchoring
- Easy installation



SJS-FR

WATERTIGHT / TRAFFIC DURABLE / FIRE RATED
2" TO 10" (50 – 250 MM) JOINT GAPS

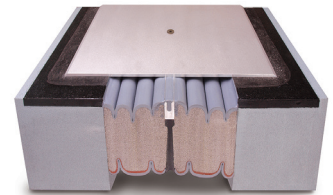
US Patents: 8,341,908 | 10,787,805 | 10,787,806

Description

SJS-FR1 and SJS-FR2 are fire-rated, watertight, high-movement, sound-dampened systems for large and seismic expansion joint gaps. Designed for use in fire-rated concrete decks/floors, interior or open air slabs, treads and risers, in both new or retrofit construction. Featuring surface-mounted traffic plates that bear vehicle and other loads.

Advantages

- 1 or 2-hour fire-rating with UL/ULC listings
- Watertight
- Eliminates need for gutters or blankets
- Non-invasive anchoring
- Available for wide joints
- Easy installation
- +/- 50% Movement (Total 100%)



Wabo®FireFlex (HFF, HFW)

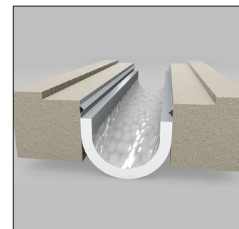
UL FIRE-BARRIER / WALL & DECKS
10" TO 20" (255 – 510 MM) JOINT GAPS

Description

A seismic fire barrier expansion joint system, Wabo®FireFlex is a fire resistive blanket for repair, retrofit, and new installation in wide structural expansion joints and construction joints in horizontal and vertical plane applications.

Advantages

- Cycle tested to exceed ASTM E1399
- 2-hour fire-rated for joints up to 20-inches (510mm) wide
- No liquid caulk or sealant required for installation
- +/- 50% Movement (100% Total)



Emshield DFR/WFR CE

CE MARKED, EN-1366-4 CERTIFIED / WALL & DECKS
1/2" TO 4" (12 – 100 MM) JOINT GAPS

Description

Emshield DFR / WFR CE is a 4-hour fire resistant movement joint for walls and decks. Tested by CSTB France and certified by European Technical Assessment (ETA) DFR/WFR CE is suitable for European and other markets requiring CE marking.

Advantages

- 4 hour fire-rated, EN-1366-4 certified
- Watertight
- Thermal insulating
- Acoustic dampening
- Non-invasive anchoring
- +/- 50% Movement (100% Total)





Wabo® SafetyFlex (SFP)

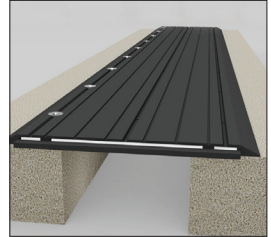
SOUND DAMPENING / SLIP-RESISTANT / HINGED COVERPLATE
1/2" TO 31" (12 – 785 MM) JOINT GAPS

Description

A hinged expansion joint cover plate, Wabo® SafetyFlex (SFP) is ideal for pedestrian walkway areas as well as in low-speed vehicular traffic areas in parking garages. Load-bearing, independent metal plates integral to the molded EPDM rubber cover allows the system to flex in response to changes in vertical displacement between opposing slabs. Used in both recessed and surface mount applications.

Advantages

- Hinged design
- ADA-compliant, slip resistant design
- Flexible
- Fire-rated by adding Emshield® DFR
- Watertight by adding DSM system
- Multi-directional seismic movement capable



Wabo® SeismicSafetyFlex (SSF)

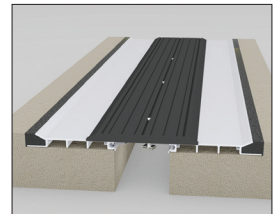
SEISMIC / SOUND DAMPENING / SLIP-RESISTANT / HINGED
2" TO 24" (50 – 610 MM) JOINT GAPS

Description

A seismic hinged expansion joint cover, Wabo® Seismic SafetyFlex (SSF) utilizes an elastomeric molded cover plate system recommended for wider joint openings that are routinely exposed to heavy loading or when design considerations call for the ability to accommodate multi-directional seismic movement. Independent metal plates integral to the rubber cover, allows the system to flex in response to changes in vertical displacement between opposing sides of the expansion joint.

Advantages

- Hinged design
- Recessed mounted
- Flexible
- Fire-rated by adding Emshield® DFR
- Watertight by adding DSM system
- Multi-directional seismic movement capable



Wabo® SeismicSpan (APS, APX)

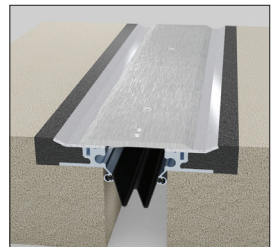
HEAVY LOADING EXPANSION JOINT COVER
1 3/8" TO 18" (35 – 675 MM) JOINT GAPS

Description

An exterior floor seismic expansion joint cover, Wabo® SeismicSpan (APS, APX) system is for wider joints exposed to heavy loading or when design considerations call for the ability to accommodate multi-directional seismic movement in car parks, parking garages, stadiums, and floors.

Advantages

- Multidirectional seismic movement capable
- Integrated moisture barrier
- Heavy loading capacity
- Surface/Recessed mounting options
- Fire-rated by adding Emshield® DFR
- Watertight by adding DSM system



Wabo® ElastoFlex (EF)

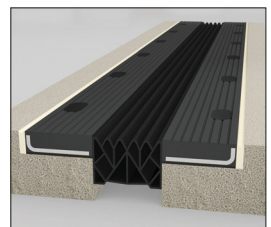
HEAVY DUTY / BLOCKOUT-MOUNTED
1" TO 6" (25 – 150 MM) JOINT GAPS

Description

A parking garage expansion joint system for concrete decks, Wabo® ElastoFlex (EF) provides a continuous membrane combined with heavy duty, steel reinforced EPDM rubber blocks. The system is designed for heavy duty applications in parking decks, loading docks, elevated roadways, convention centers, stadiums and other vehicle and forklift traffic conditions.

Advantages

- Watertight
- Steel reinforced flanges
- New or retrofit construction
- Available in deck-to-wall models
- Fire-rated by adding Emshield® DFR
- Movement of up to 100%



Plaza Deck & Split-Slab Solutions



DSM-FP

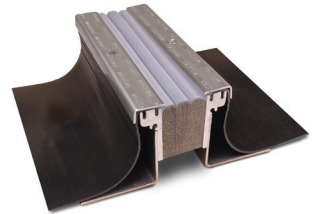
WATERTIGHT / TRAFFIC DURABLE
1/2" TO 4" (12 – 100 MM) JOINT GAPS

Description

DSM-FP is a trafficable joint system for plaza decks & split slabs designed to straddle joint gaps up to 4-inches (100mm). DSM-FP expands the use of the DSM System to waterproofed split-slab deck designs through the use of side flashing sheets that integrate with the deck waterproofing membrane.

Advantages

- Watertight
- Traffic durable
- Handles heavy pedestrian loads
- Steel side legs available in many heights
- Integrated side flashing sheets
- +/- 50% Movement (Total 100%)



SJS-FP

WATERTIGHT / COVERPLATE SYSTEM
2" TO 16" (50 – 400 MM) JOINT GAPS

Description

SJS-FP expands the use of the SJS System to waterproofed split-slab deck designs through the use of side flashing sheets that integrate with the deck waterproofing membrane. The system is made up of two sub-assemblies which include the structural-slab mounted supporting legs with integral waterproofing side sheets and the joint sealing and coverplate assembly.

Advantages

- Watertight
- Available for wide joints
- Traffic durable
- Handles heavy pedestrian/vehicular loads
- Integrated side flashing sheets
- +/- 50% Movement (Total 100%)



Migutan-FP

WATERTIGHT / FACTORY-FABRICATED TRANSITIONS
1/2" TO 4 3/4" (12 – 120 MM) JOINT GAPS

Description

Migutan FP110 and FP155 are unique designs incorporating side flashing membrane sheets which integrate with the deck waterproofing system to form a continuous, completely watertight system.

Advantages

- Watertight
- Factory-fabricated transitions
- Heavy-duty positive interlocking side rails
- Integrated side flashing sheets
- Up to +/- 50% Movement (Total 100%)



Roofjoint

WATERTIGHT / ROOF AND SPLIT-SLAB EXPANSION JOINT
2" TO 9" (50 – 225 MM) JOINT GAPS

Description

Roofjoint is a patented dual-seal, double-flanged, extruded thermoplastic rubber system for sealing expansion joints in roofs, plaza assemblies, green and vegetative roofs.

Watertightness is achieved through positive integration with the waterproofing membrane and a purpose-designed system for transitioning between the joint in a split-slab and wall joint interface.

Advantages

- High movement
- Redundant sealing
- Factory-fabricated transitions
- Heat weldable
- Achieves watertight wall joint to split-slab interface





DFR-FP

WATERTIGHT / FIRE-RATED
1/2" TO 4" (12 – 100 MM) JOINT GAPS

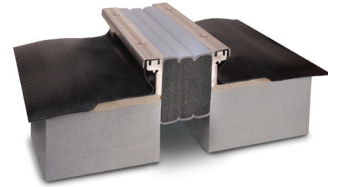
US Patents: 10,941,562 | 10,934,704 | 10,934,702

Description

Emshield® DFR-FP is a single unit fire-rated trafficable joint system for plaza decks & split slabs designed to straddle joint gaps up to 4-inches (100mm). DFR-FP expands the use of Emshield DFR to waterproofed split-slab deck designs through the use of side flashing sheets that integrate with the deck waterproofing membrane. Emshield DFR-FP has been certified by Underwriters Laboratories (UL) to the rigors of UL/ULC 2079.

Advantages

- Watertight
- 2-hour fire-rating
- Traffic durable
- Handles heavy pedestrian loads
- Integrated side flashing sheets
- +/- 50% Movement (Total 100%)



SJS-FP-FR

WATERTIGHT / FIRE-RATED / COVERPLATE SYSTEM
2" TO 10" (50 – 250 MM) JOINT GAPS

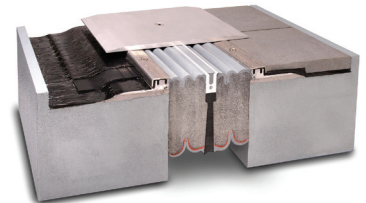
US Patents: 8,341,908 | 10,787,805 | 10,787,806

Description

The SJS-FP-FR System is designed to provide a UL/ULC-certified fire-rated, watertight, trafficable joint system for use in seismic and large joint openings in decks of split-slab design. SJS-FP-FR expands the use of the SJS-FR System through side flashing sheets that integrate with the deck waterproofing membrane.

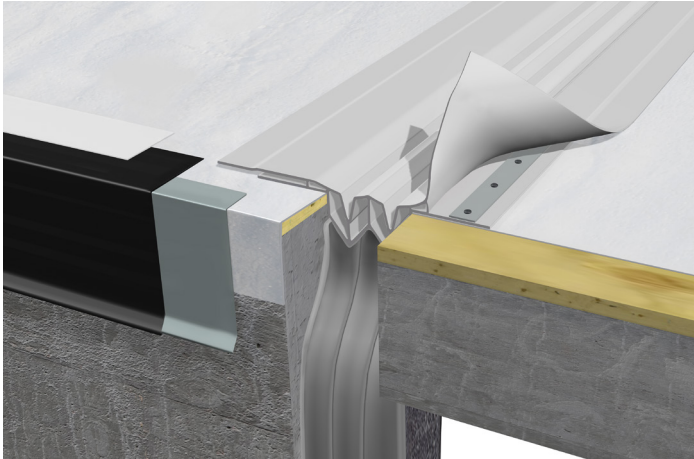
Advantages

- Watertight
- 2-hour fire-rating with UL/ULC listings
- Traffic durable
- Non-invasive coverplate
- Handles high-point loads
- Integrated side flashing sheets
- +/- 50% Movement (Total 100%)



Roofing Solutions

Sika Emseal's Roof Expansion Joint products are engineered to deliver watertight, durable, and movement-capable solutions for the most demanding roofing applications. These systems integrate with various roofing assemblies and building envelopes, providing continuity across roof-to-wall transitions, parapets, and other complex interfaces. Utilizing factory-fabricated components, pre-compressed foam sealants, and optional fire-rated solutions, Sika Emseal ensures that roof expansion joints perform reliably under thermal, seismic, and structural movement—while maintaining aesthetics, energy efficiency, and long-term durability.



Engineered Redundancy

A key strength of the RoofJoint System lies in its built-in redundancy, featuring patented dual-level integration flanges, dual-level joint sealing, and dual-method mechanical fastening, and long-term durability. This multi-tiered approach ensures superior watertight performance, even under the dynamic conditions of thermal movement, structural loading, and extreme weather exposure.



RoofJoint

WATERTIGHT / ROOF EXPANSION JOINT
2" TO 9" (50 – 225 MM) JOINT GAPS

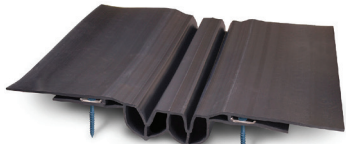
Description

RoofJoint is a patented dual-seal, double- flanged, extruded thermoplastic rubber system for sealing expansion joints in roofs, plaza assemblies, green and vegetative roofs. Watertightness is achieved through positive integration with the roofing membrane and a purpose-designed system for transitioning between the joint in the roof and joints in walls. Available in either a Nitrile PVC or TPV thermoplastic rubber.

US Patents: 9,850,662 | 10,851,542

Advantages

- High movement
- Redundant sealing
- Factory-fabricated transitions
- Heat weldable
- Achieves wall joint to roof joint interface
- TPV & NPVC membranes available in black or reflective white color



Wabo®RoofCover

LARGE_GAP ROOF EXPANSION JOINT
10" TO 24" (250 – 600 MM) JOINT GAPS

Description

Wabo®RoofCover (RFC) is an aluminum coverplate system engineered for flat and sloped roofs that are subject to thermal and seismic movement. The integral weatherseal and bellows moisture barrier keep outside elements from penetrating the structural opening and interior space below the joint. The aluminum cover protects expansion joint from ice/snow loads, UV rays, and occasional foot traffic.

Advantages

- Water resistant
- Durable aluminum cover
- Handles snow and ice loading
- Protects joint from occasional foot traffic
- Multidirectional Seismic Movement Capable



Below Grade Solutions

Sika Emseal's BG (Below Grade) System is a high-performance expansion joint solution specifically designed for below-grade waterproofing in both backfilled and blind-side construction applications. Engineered to handle structural movement while maintaining watertight integrity, the BG System integrates with foundation walls and waterproofing membranes. Most notably, the system supports factory-fabricated, watertight transitions to above-grade expansion joints, ensuring a continuous, durable seal from foundation to façade—critical for comprehensive building envelope protection.



BG System

WATERTIGHT / BELOW-GRADE EXPANSION JOINT
2" TO 7" (50 – 175 MM) JOINT GAPS

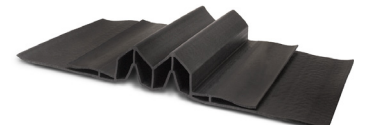
US Patents: 9,850,662 | 10,851,542

Description

The BG System is a heavy-duty, double-celled, extruded, heat-weldable rubber gland flanked by integral side flashing sheets. The side flashing sheets are field integrated into the waterproofing membrane. The BG System is the only expansion joint system designed for both backfilled and blind side construction. Factory fabricated transitions are provided for continuity of seal.

Advantages

- Walls and under-slab seal
- Backfilled and blind side compatible
- Transitions to above-grade expansion joints
- High movement capability
- Redundant sealing to waterproofing through mechanical, heat, and/or chemical integration



Immersed or Hygienic Solutions



Submerseal

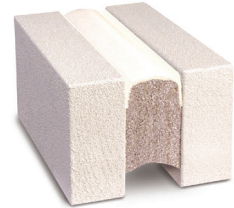
WATERTIGHT / CONTINUOUS IMMERSION EXPANSION JOINT
1/2" TO 4" (12 – 100 MM) JOINT GAPS

Description

Submerseal® is a water resistant, joint-face-adhered, precompressed, primary seal for retrofit and new structural expansion joints and construction joints where continuous or intermittent immersion or contact with chlorinated water (up to 5 ppm), saline water, potable water or wastewater is planned. Typical applications include swimming pools, fountains, water parks, water features, and water tanks.

Advantages

- Watertight
- Resistant to chlorinated water (up to 5 ppm)
- Resistant to saline water
- Rapid Installation
- Non-invasive anchoring
- NSF/ANSI STANDARD 61 compliant
- +/- 25% Movement (50% Total)



Chemseal

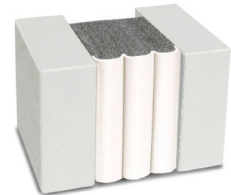
WATERTIGHT / CHEMICAL-TOLERANT EXPANSION JOINT
1/2" TO 4" (12 – 100 MM) JOINT GAPS

Description

A chemical resistant sealant and expansion joint, Chemseal is a precompressed, primary seal for retrofit and new structural expansion joints and construction joints where contact with harsh chemicals and chemical dilutions is expected.

Advantages

- Watertight
- Widest range of chemical tolerance
- Rapid Installation
- Non-invasive anchoring
- +/- 25% Movement (50% Total)



DSF System

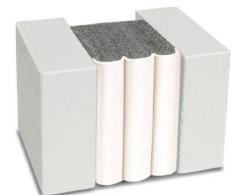
WATERTIGHT / NFS/ANSI-COMPLIANT EXPANSION JOINT
1/2" TO 4" (12 – 100 MM) JOINT GAPS

Description

An NSF compliant joint sealant, DSF System provides a lasting solution to joint sealing applications and will not pose a contamination risk to liquids or solids which may be ingested. The silicone coating is compliant to NSF/ANSI Standard 61 for contact with potable drinking water. It is also in compliance with FDA Regulation CFR 177.2600 for indirect contact with food.

Advantages

- Watertight
- Resistant to chlorinated water (up to 5 ppm)
- Resistant to saline water
- Rapid Installation
- Non-invasive anchoring
- NSF/ANSI STANDARD 61 compliant
- +/- 25% Movement (50% Total)



Interior Floor Solutions



SJS-FR-NB

FIRE-RATED/ "BUMPLESS" COVERPLATE EXPANSION JOINT
2" TO 10" (50 – 250 MM) JOINT GAPS

US Patents: 8,341,908 | 10,787,805 | 10,787,806

Description

SJS-FR-NB features a flush-mounted trafficable coverplate. The system is watertight, fire-rated, sound-dampening, and trafficable for large and seismic expansion joint gaps. SJS-FR-NB is constructed from two horizontal joints preassembled in parallel adjacent to a heavy-duty spline. The system contains no metal embeds or unnecessary metal components.

Advantages

- Watertight
- 1 or 2-hour fire-rating
- Flush-mounted trafficable cover plate
- Easy installation
- Non-invasive anchoring
- Available for wide joints
- High movement capable



SJS-FR-Inlay

FIRE-RATED / FLOORING INTEGRATED COVERPLATE EXPANSION JOINT
2" TO 10" (50 – 250 MM) JOINT GAPS

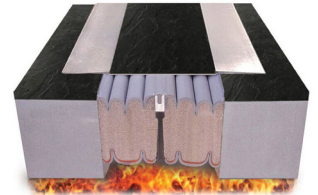
US Patents: 8,341,908 | 10,787,805 | 10,787,806

Description

SJS-FR-Inlay is an interior expansion joint which features an aluminum coverplate that is designed to incorporate the aesthetics of the flooring surface adjacent to the coverplate edges. The system is watertight, fire-rated, high-movement, sound-dampening, and trafficable for large and seismic expansion joint gaps. SJS-FR-Inlay is constructed from two horizontal joints preassembled in parallel adjacent to a heavy-duty spline. The system contains no metal embeds or unnecessary metal components.

Advantages

- Watertight
- 1 or 2-hour fire-rating
- Milled coverplate for flooring integration
- Easy installation
- Non-invasive anchoring
- Available for wide joints
- +/- 50% Movement (100% Total)



SJS-FR

WATERTIGHT / TRAFFIC DURABLE / FIRE-RATED
2" TO 10" (100 – 250 MM) JOINT GAPS

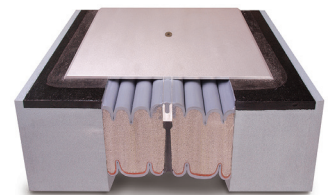
US Patents: 8,341,908 | 10,787,805 | 10,787,806

Description

SJS-FR1 and SJS-FR2 are fire-rated, watertight, high-movement, sound-dampened systems for large interior expansion joint gaps. Designed for use in fire-rated concrete decks/floors, interior or open air slabs, in both new or retrofit construction. The coverplates handle pedestrian and high point loads.

Advantages

- Watertight
- 1 or 2-hour fire-rating with UL/ULC listings
- Eliminates need for gutters
- Easy installation
- Non-invasive anchoring
- Available for wide joints
- +/- 50% Movement (100% Total)





Wabo®CorridorWrap (Floor)

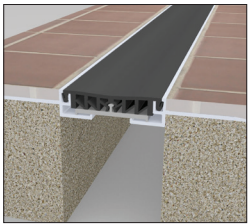
INTERIOR EXPANSION JOINT COVER
1" TO 3" (25 – 75 MM) JOINT GAPS

Description

An interior expansion joint cover for floors, Wabo®CorridorWrap is an aesthetic joint system with narrow sightlines that offers a choice of models, each of which consists of a variety of elastomeric seals and edge retainers. This variety provides for floor applications and permits selection of a system appropriate for the expected movement and project conditions including compliance with ADA guidelines.

Advantages

- Load capacity: normal interior use
- Flush inserts
- ADA compliant
- Aesthetic continuity with floor, wall, and ceiling options



Wabo®FastFloor

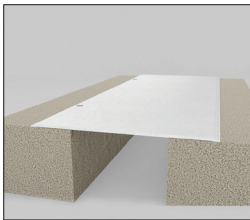
FLOOR EXPANSION JOINT COVERPLATE
1" TO 6" (25 – 150 MM) JOINT GAPS

Description

Wabo®FastFloor (FJF, FJS) is a blockout-free series of durable and reliable floor joint systems capable of accommodating thermal and multi-directional seismic movement. The systems are surface mounted directly to the concrete floor slab and do not require the use of traditional preformed blockouts.

Advantages

- Load capacity: normal interior use
- Blockout-free installation
- ADA compliant
- Flooring compatibility with carpet, tile, etc.



Wabo®HingeMount

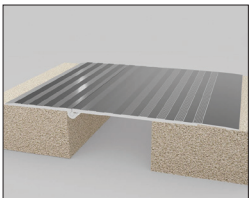
HINGED COVERPLATE
2" TO 10" (50 – 150 MM) JOINT GAPS

Description

Wabo® HingeMount (HDH) is an interior floor hinged expansion joint coverplate system. Surface mounted and ideal for uneven floors and decks. Quickly and easily installs in retrofit repair projects.

Advantages

- Load capacity: normal interior use
- Blockout-free installation
- ADA compliant
- Hinged design for uneven floors



Wabo®SeisMaxPlus (Floor)

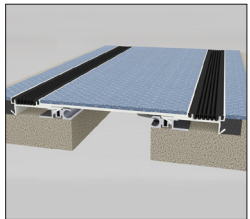
SEISMIC INTERIOR FLUSH EXPANSION JOINT
2" TO 24" (50 – 600 MM) JOINT GAPS

Description

Wabo®SeisMaxPlus for floors (NBS) sits flush with the finished flooring level for optimal trafficability. The recessed inlay allows for installation of rigid flooring surfaces up to 1/4" thick and helps blend the coverplate into the finished flooring. Elastomeric seals on either side of the system allow for thermal movement without buckling or bulging.

Advantages

- Recessed flush mounted
- No visible hardware
- Emergency egress capable
- Multi-directional movement capable



Wabo®SeismicFloor

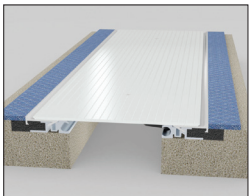
INTERIOR SEISMIC FLOOR COVERPLATE
2" TO 24" (50 – 600 MM) JOINT GAPS

Description

Wabo®SeismicFloor (FNB, FXE) is designed with an inverted bevel coverplate thus reducing gaps between the cover and extension plate and is flush with finished floor. It is a durable and reliable interior floor system capable of accommodating thermal and multi-directional seismic movement.

Advantages

- Multidirectional movement capable
- Recessed or surface mounted options
- ADA compliant
- Flooring compatibility with carpet, tile, etc





Wabo®SeismicPan

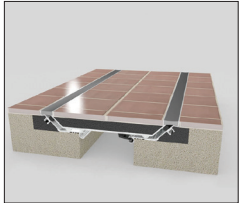
SEISMIC FLOOR EXPANSION JOINT PAN COVER
2" TO 18" (50 – 450 MM) JOINT GAPS

Description

Wabo®SeismicPan (SP) is a pan style floor system with minimal interruption of the tile, terrazzo, carpet, concrete or other deck or flooring material.

Advantages

- Blends in aesthetically with flooring finish
- ADA compliant
- Recessed mounted



Migutrans SFS

HEAVY DUTY INTERIOR EXPANSION JOINT COVER
3/8" TO 4" (10 – 100 MM) JOINT GAPS

Description

A heavy-duty interior floor expansion joint cover system, Migutrans SFS is installed flush with the flooring surface ideally suited for high-point load traffic and ADA compliance.

Advantages

- Extremely durable
- All-metal profile (aluminum)
- Rapid Installation
- ADA compliant
- Smooth, impact-free traffic surface at any opening state of the joint



Migutec FGH2 65/30

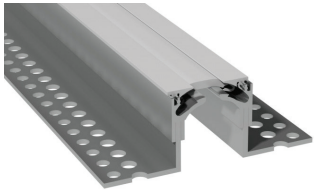
HIGH AESTHETIC / HYGIENIC REQUIRED EXPANSION JOINT PROFILE
3/16" TO 2" (20 – 50 MM) JOINT GAPS

Description

Ultra-smooth insert for residue-free cleaning for optimal sterility and physiological safety. Seamless, symmetrical visible surface
Hard-wear special insert for smoother, low-noise transit.

Advantages

- Standard load capacity
- Low profile
- High movement capabilities
- ADA compliant
- Floor-to-wall versions available



Interior Wall Covers and Fillers



QuietJoint®

ACOUSTIC JOINT FILLER AND PARTITION CLOSURE
1" TO 6" (25 – 150 MM) WALL SEPARATIONS

Description

An acoustic joint filler, QuietJoint® is a mass-loaded sound, draft, heat, cold, and dust blocking acoustic partition closure and joint filler for interior, non-moving joints and gaps. It's a non-mechanical, high-STC (Sound Transmission Class), non-invasively anchored closure that quickly and easily mates partitions to windows, mullions, or stud walls.

Advantages

- Quick, easy installation
- Thermally insulating
- Non-invasive anchoring
- Size switching accommodates gap variations
- Wide range of colors
- Won't suffer from compression set



Wabo®Contour II

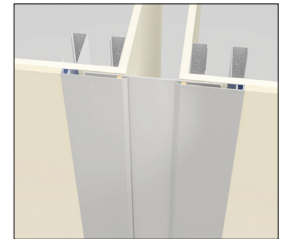
INTERIOR ALUMINUM WALL EXPANSION JOINT COVER
1" TO 6" (25 – 150 MM) JOINT GAPS

Description

An interior wall and ceiling expansion joint cover plate system, Wabo®Contour II (CTR) is capable of accommodating thermal and seismic movement and integrates with a variety of wall and ceiling surface treatments. The aluminum coverplate is recessed into the wall finish for a flush installation.

Advantages

- Multi-directional movement capable
- No visible hardware
- Corner conditions
- Surface/Flush mounting options
- Movement of +/- 50% (Total 100%) of nominal size



Wabo®CorridorWrap (Wall/Ceiling)

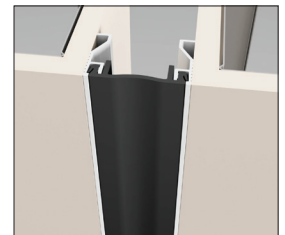
INTERIOR EXPANSION JOINT COVER FOR WALLS AND CEILINGS
1" TO 6" (25 – 150 MM) JOINT GAPS

Description

An interior expansion joint cover for walls and ceilings, Wabo®CorridorWrap is an aesthetic joint system with narrow sightlines that offers a choice of models, each of which consists of a variety of elastomeric seals and edge retainers. This variety provides a wide range of attachment solutions for wall, drywall, and ceilings, and permits selection of a system appropriate for the expected movement and project conditions.

Advantages

- Flush inserts
- Corner wall versions
- Aesthetic continuity with wall and ceiling options
- Low profile
- Ultra-smooth inserts for residue-free cleaning



Wabo®SeisMaxPlus (Wall/Ceiling)

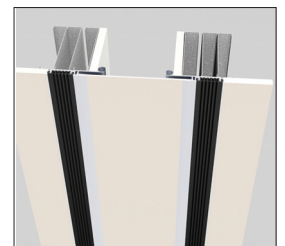
SEISMIC INTERIOR WALL AND CEILING EXPANSION JOINT
4" TO 24" (100 – 610 MM) JOINT GAPS

Description

SeisMaxPlus for walls and ceilings (NBW) sits flush with the finished wall/ceiling surface for limited interruption of the desired aesthetic. The recessed inlay allows for multiple wall surface types to be integrated into the expansion joint cover. Elastomeric seals on either side of the system allow for thermal movement without buckling or bulging.

Advantages

- Recessed flush mounted
- No visible hardware
- Emergency egress capable
- Multi-directional movement capable
- Corner / floor-to-wall conditions





Wabo®SeismicCover

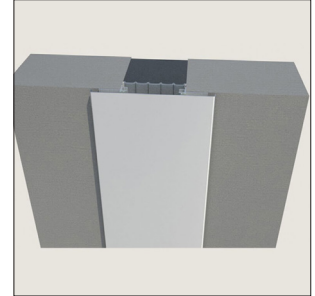
SEISMIC WALL EXPANSION JOINT COVER FOR DRYWALL
2" TO 24" (50 – 610 MM) JOINT GAPS

Description

A seismic wall expansion joint cover, Wabo®SeismicCover is an exterior and interior wall system designed to accommodate both thermal and multi-directional movement. The system is installed on the exterior or interior of a building and provides a simple, attractive and durable solution. In interior applications, SeismicCover WFI/WFT is surface mounted over the ceiling, soffit, or wall expansion joint opening.

Advantages

- Rapid installation
- Surface mounted
- No visible hardware
- Multi-directional/Seismic movement capable



Wabo®WeatherSeam

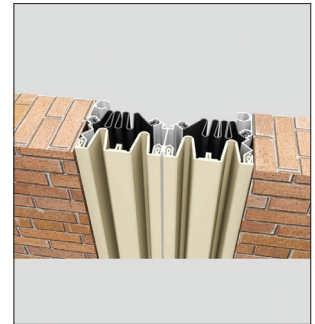
SEISMIC WALL EXPANSION JOINT COVER FOR WIDE WALL JOINTS
2" TO 24" (50 – 610 MM) JOINT GAPS

Description

A seismic building expansion joint system for interior and exterior walls and ceilings, Wabo®WeatherSeam is weather resistant and installed flushed with the finished substrates. Provided in joint widths up to 24" wide to accommodate seismic joint openings.

Advantages

- Rapid installation
- Surface mounted
- No visible hardware
- Weather resistant
- Multi-directional/Seismic movement capable



Integrated Warranty Solutions

Sika Emseal offers robust, single-source warranty programs that pair our proven expansion joint systems with top-tier waterproofing and roofing membranes. Whether for liquid-applied, hot-applied, PVC, or traffic-deck coatings, these warranties deliver watertight integration, redundant sealing, and long-term performance assurance—all backed by one trusted manufacturer.

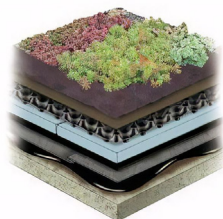
Liquid Applied Roofing

When paired with **Sikalastic® RoofPro** liquid-applied membranes, Sika Emseal's **Roofjoint system** qualifies for a single-source warranty of up to 20 years—providing unmatched assurance for building owners and design professionals. The watertight integration of Roofjoint's dual-seal technology and factory-fabricated transitions with the flexible, durable Sikalastic membrane ensures a continuous, watertight barrier across complex roof details. This pairing is ideal for accommodating structural movement while maintaining membrane integrity over time. Reinforced interfaces between the expansion joint and liquid membrane are designed to eliminate weak points, reduce installation errors, and simplify maintenance. Backed by coordinated field support and quality control from a single manufacturer, this system delivers long-term performance and streamlined warranty coverage across the entire waterproofing envelope.



Green Roofs & Plaza Decks

When **Sika Emseal's Roofjoint** is integrated with **Hydrotech's MM6125®** hot-rubberized asphalt membrane, the result is a high-performance, single-source system covered by a 20-year warranty that encompasses both the waterproofing membrane and the expansion joint. This integration ensures a fully compatible interface between the joint system and the hot-applied membrane, minimizing installation risk and maximizing long-term reliability. This system is particularly well-suited for vegetative and plaza decks where hot-applied membranes are preferred, and movement demands are high. The unified warranty provides peace of mind and simplifies coordination by placing responsibility for performance, support, and quality assurance under one roof—Sika.



Deck Coating

For traffic-bearing deck applications—such as parking structures and stadiums—**Sikalastic® DeckPro** coatings can be integrated with Sika Emseal's industry-leading horizontal expansion joint systems, including **DSM, DFR, SJS, and Thermaflex**. This combination delivers a high-performance, durable, and watertight system under a single-source warranty, covering both the waterproofing coating and the expansion joints. This sole-source approach eliminates the risks associated with multi-manufacturer assemblies by offering coordinated details backed by a single warranty provider. It ensures that all critical components—from the movement joints to the waterproofing membrane—work in unison to accommodate structural movement, withstand vehicular and pedestrian traffic, and resist long-term exposure to UV, deicing salts, and thermal cycling. With over a century of combined expertise in structural joint sealing and waterproof coating technologies, Sika provides contractors, designers, and owners peace of mind through proven system performance, local technical support, and streamlined quality assurance.

Sika Sarnafil PVC Roofing

When used with **Sarnafil®** or **Sikaplan®** PVC roofing systems, Sika Emseal's **Roofjoint** becomes a fully integrated solution within a comprehensive, single-source system warranty—covering both the expansion joint and the roofing membrane for up to 20 years. This coordinated system ensures that compatibility, performance, and long-term durability are built in from the start, eliminating the risks commonly associated with multi-manufacturer assemblies.



The Roofjoint system is designed to seamlessly interface with Sarnafil and Sikaplan membranes using hot-air welded connections, creating a continuous, watertight seal that resists thermal cycling, structural movement, and harsh environmental conditions. By combining the proven performance of PVC membranes with Sika Emseal's expansion joint expertise, this integrated system simplifies detailing, installation, and warranty management—all under the trusted Sika brand.

COMMERCIAL EXPANSION JOINTS *CHECKLIST*

Emseal® ■ Wabo®



Name _____ Company _____ Date _____

Phone _____ Fax _____ Email _____

Job Name _____ Job Location (City & State) _____

INSTALLATION LOCATION

<input type="checkbox"/> Interior <input type="checkbox"/> Exterior	<input type="checkbox"/> Wall <input type="checkbox"/> Floor/Deck <input type="checkbox"/> Roof	<input type="checkbox"/> Above Grade <input type="checkbox"/> Below Grade <input type="checkbox"/> Submerged
--	---	--

CONSTRUCTION TYPE

<input type="checkbox"/> New Construction <input type="checkbox"/> Retrofit Construction

FIRE RATING

<input type="checkbox"/> No Fire Rating Fire Rating: <input type="checkbox"/> 1-hr <input type="checkbox"/> 2-hr <input type="checkbox"/> 3-hr

EXPANSION GAP INFORMATION

Joint Gap Width(s): _____ Varies from: _____ to _____ (over its length)	Joint Substrate Depth: _____	Total Footage (ft or m): _____
--	------------------------------	--------------------------------

Have Gap Dimensions Been Field Measured? <input type="checkbox"/> Yes / <input type="checkbox"/> No Substrate Surface Temp. _____ Ambient Temp. _____	Substrate Composition: _____ (e.g., concrete, brick, metal, etc.) Membrane Tie-in?: <input type="checkbox"/> Yes / <input type="checkbox"/> No Type _____ Metal Pour Stops?: <input type="checkbox"/> Yes / <input type="checkbox"/> No
--	--

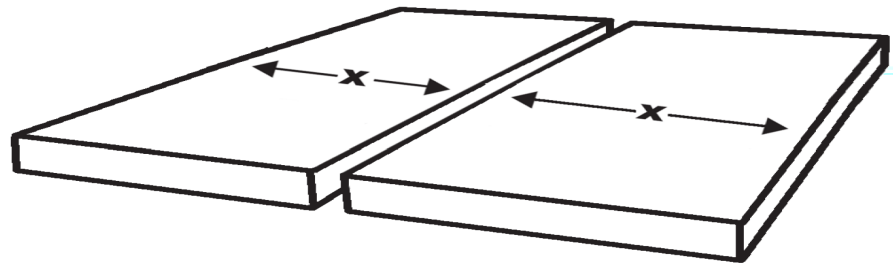
Movement (if known): _____ (e.g., ± thermal; ± shear, etc.)	Joint is: <input type="checkbox"/> Primary Seal <input type="checkbox"/> Secondary Seal	Joint Will Seal Out: <input type="checkbox"/> Rain/Water <input type="checkbox"/> Cold/Heat <input type="checkbox"/> Sound <input type="checkbox"/> Air <input type="checkbox"/> Vermin <input type="checkbox"/> Other _____
--	--	---

Are There Transitions? <input type="checkbox"/> Yes (explain) / <input type="checkbox"/> No _____	How Does the Joint Terminate? _____
--	--

FOR HORIZONTAL DECK/FLOOR and ROOF JOINTS (ONLY)

DECK CONSTRUCTION

Is this a Solid Slab Condition? <input type="checkbox"/> Yes / <input type="checkbox"/> No	
Is this a Split Slab Condition? <input type="checkbox"/> Yes / <input type="checkbox"/> No	
Topping slab thickness: _____	
Does the Joint have Blockouts? <input type="checkbox"/> Yes / <input type="checkbox"/> No	
Traffic Types (check all that apply): <input type="checkbox"/> Car <input type="checkbox"/> Bus <input type="checkbox"/> Pedestrian <input type="checkbox"/> None <input type="checkbox"/> Other _____	



Please fill in the slab width dimensions at each "x". If one substrate of your joint is a wall instead of a slab, please denote that "x" as "Wall" instead of giving a dimension. If more than one joint occurs within the same immediate area, please draw them and the appropriate dimensions. Attach additional drawings as needed.

Please include any relevant details when submitting checklist to Sika Emseal

Architect: _____ Engineer: _____ Contractor: _____ Owner/Developer: _____

Please FAX or Email to Sika Emseal Fax: (508) 836-0281 / Email: techinfo@emseal.com / Phone: (508) 836-0280

SIKA EMSEAL CHECKLIST V9.0 Copyright © 2025 by Emseal Joint Systems, Ltd. All rights reserved.

COMMERCIAL EXPANSION JOINTS

Emseal® ■ Wabo®



For up-to-date CAD and BIM Details, Guide Specifications, Product Data, Install Data, Technical Bulletins, Product Photos, Installation Portfolios and Videos, and more please visit:

www.emseal.com

© 2025 Emseal Joint Systems, LTD, rev 09/2025

EMSEAL JOINT SYSTEMS, LTD

25 Bridle Lane
Westborough, MA 01581
USA
Phone 508-836-0280
Fax 508-836-0281

EMSEAL, LLC

111 Royal Group Crescent
Woodbridge, Ontario L4H 1X9
Canada
Phone 416-740-2090
Fax 416-740-0233

SIKA CORPORATION

201 Polito Avenue
Lyndhurst, NJ 07071
USA
Phone 201-933-8800
Fax 201-933-6225

BUILDING TRUST

