

MIGUTRANS EXPANSION JOINT SYSTEMS



FOR USE BY

FORK LIFT TRUCKS PALLET TRUCKS

HARD WEARING
MAINTENANCE-FREE
LONG LASTING





EXPANSION JOINT SYSTEMS

HAVE PROVEN THEIR WORTH IN OVER 40 YEARS OF SERVICE.

OUR PRODUCTS SATISFY THE DEMANDS OF MODERN CONSTRUCTION METHODS.

OVER 8.000.000 METERS OF PROFILE HAVE PERFORMED TO THE REQUIREMENTS OF ARCHITECTS, BUILDERS AND OWNERS TROUGHOUT YEARS OF USE.

THIS IS YOUR ASSURANCE OF HIGH QUALITY AND LASTING PEACE OF MIND.

OUR DEDICATED AND INNOVATIVE ENGINEERING DEPARTMENT IS CONTINUALLY DEVELOPING AND IMPROVING EXPANSION JOINT TECHNOLOGY.



Our advice as to applications and other recommendations are based on comprehensive research work and years of experience. They are, however without liability (also in respect of third parties) and do not relieve our customers of the responsibility to check the suitability of our products and processes for their intended purposes.

We reserve the right to make technical changes without prior notice.

INDEX

CATALOGUE NO 2

MIGUTRANS

SUBJECT	DESCRIPTION	PAGE
PRODUCTDESCRIPTION		2
MIGUTRANS EXPANSION JOINT PROFILES	FOR HEAVY DUTY FLOORS	
Series FS 40/...	small visible surface, movement capacity 16 mm, Joint width up to 35 m	3
Series FS 50/...	Movement capacity 10 mm, Joint width up to 30 mm	4
Series FS 75/..., FS 110/..., FS 130/..., FS 160/...	Movement capacity up to 60 mm, Joint width up to 130 mm	5–8
Series FS 135/...	extra high load capacity, movement capacity 20 mm, Joint width up to 35 mm	9
Series FS 155/...	Movement capacity 40 mm, Joint width up to 120 mm	10
Series FS 185/...	Movement capacity 60 mm, Joint width up to 140 mm	11
Series FS200/...	Movement capacity 40 mm, Joint width up to 60 mm	12
Series FSV235/...	replaceable bridging unit, movement capacity 60 mm, Joint width up to 150 mm	13
Series FS 100/...	even load bearing surface, movement capacity 20 mm, Joint width up to 50 mm	14
CORNER VERSIONS	E4-VERSION E3-VERSION	15–17 18–20
EXAMPLES FOR APPLICATION	combined profiles small installation heights large installation heights extremely wide expansion joints special constructions	21 22 23 23 24
PROFILE CONNECTIONS	Expansion Joint Systems	25
INTERSECTIONS	Examples	26
MIGUTRANS-CONTRACTION JOINT PROFILES	FOR CONTRACTION JOINTS IN FLOORS WITH HIGH LOAD CAPACITY	
Series ESF 10/... AL	small visible surface, Installation height from 15 mm on	27
Series ESF 16/... AL	high load capacity, Movement capacity 4 mm	28
Series ESF 27/... AL	high load capacity, Movement capacity 10 mm	29
PROFILE CONNECTIONS	Contraction Joint Systems	30
INTERSECTIONS	Examples	31
INSTALLATION INSTRUCTIONS	MIGUTRANS-Expansion Joint Systems MIGUTRANS-Contraction Joint Systems	32

Our Catalogue No.3 – **MIGUTAN**-Expansion Joint Systems – informs you on watertight systems for car parks, ramps, garages, pedestrian bridges, canteen kitchens and swimming-pool-areas.
Please order on request.

EXPANSION JOINT SYSTEMS

FOR FLOORS TO BE USED BY FORK LIFT AND PALLET TRUCKS

MIGUTRANS

HARD WEARING, MAINTENANCE-FREE, LONG LASTING

TEST CERTIFICATE

Official test certificates on load capacity are available and can be forwarded on request.

QUALITY

The profiles have been installed in various buildings all over the world for more than 15 years.

A number of reference projects can be provided.

IMPORTANT NOTES

For installation of the MIGUTRANS profiles in asphalt, please ask for our technical advice.

In wet areas (canteen kitchens, sanitary rooms etc.), we recommend the use of stainless steel profiles or our watertight MIGUTAN profiles.

When installing small installation heights, we recommend the use of epoxy for the sealing of the block out, because of the thin coverage above the profile (see page 20). The visible surface of the profiles is protected by adhesive tapes.

Load capacities for fork lift trucks are based on pneumatic or rubber tyres with a contact surface of 200 x 200 mm.

Production length of 4 m: Series FS 40/...
Series FS 50/...
Series FS 75/...
Series FS 100/...
Series FS 110/...
Series FS 130/...
Series FS 160/...
Series FS 155/...
Series FS 135/2500
Series ESF 10/...
Series ESF 16/...
Series ESF 27/...

Production length of 3 m: Series FS 185/...
Series FS 200/...
Series FSV235/4500

Larger installation heights on request.

Colour: aluminium

TYPICAL USES

Shopping centres, supermarkets, airports, factories, warehouses, exhibition halls, railway stations, hospitals.

MATERIAL

MIGUTRANS Expansion Joint Systems:

Aluminium cover with striated top surface and perforated mounting brackets and flexible rubber cords (Series FS 40/... and FS 50/... without rubber cords).

MIGUTRANS Contraction Joint Systems:

Aluminium side plates with perforated and striated mounting brackets. Flexible insert made of cellular rubber.

Our ESF 16/... series is also available with additional slide-in anchors (see page 28).

SPECIAL PROPERTIES

MIGUTRANS Expansion Joint Systems

High load resistant solid extrusion (hard wearing, maintenance-free, long lasting).

Visible surface shows no gaps to reduce dirt accumulation.

Capable of absorbing movement in three directions (Articulated telescoping system)

Good skid resistance given by striated surface.

Flash water protected by rubber cords.

Profiles are set to the mid-point by means of distance pieces in our works, this guarantees easy installation and correct function of the profile.

The profiles can be pre-adjusted on request, to achieve single sided enlargement on the movement capacity.

Positive connection between production length of profile by use of slide-in connection pins.

Secure fixing with perforated mounting brackets.

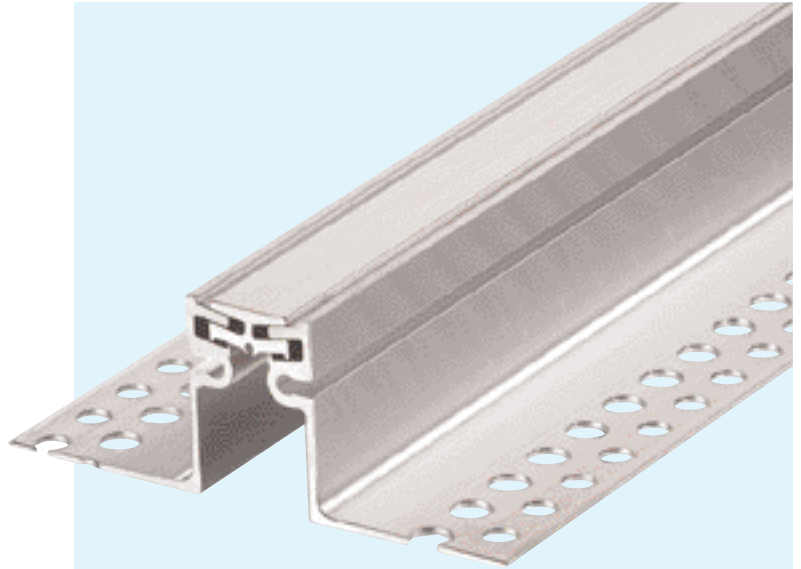
To be used by fork lift trucks and pallet trucks free from vibrations - due to special interlocking design (FS 100/... series).

SERIES FS 40/...

FOR HEAVY DUTY FLOORS – TO BE USED BY FORK LIFT AND PALLET TRUCKS

MIGUTRANS

- **SOLID ALL METAL-PROFILE
(HARD WEARING, MAINTENANCE-FREE, LONG LASTING)**
- **SMALL VISIBLE SURFACE**
- **LARGE MOVEMENT CAPACITY
UP TO 16 MM**
- **INSTALLATION HEIGHT
FROM 19 MM UPWARDS**



TECHNICAL DATA

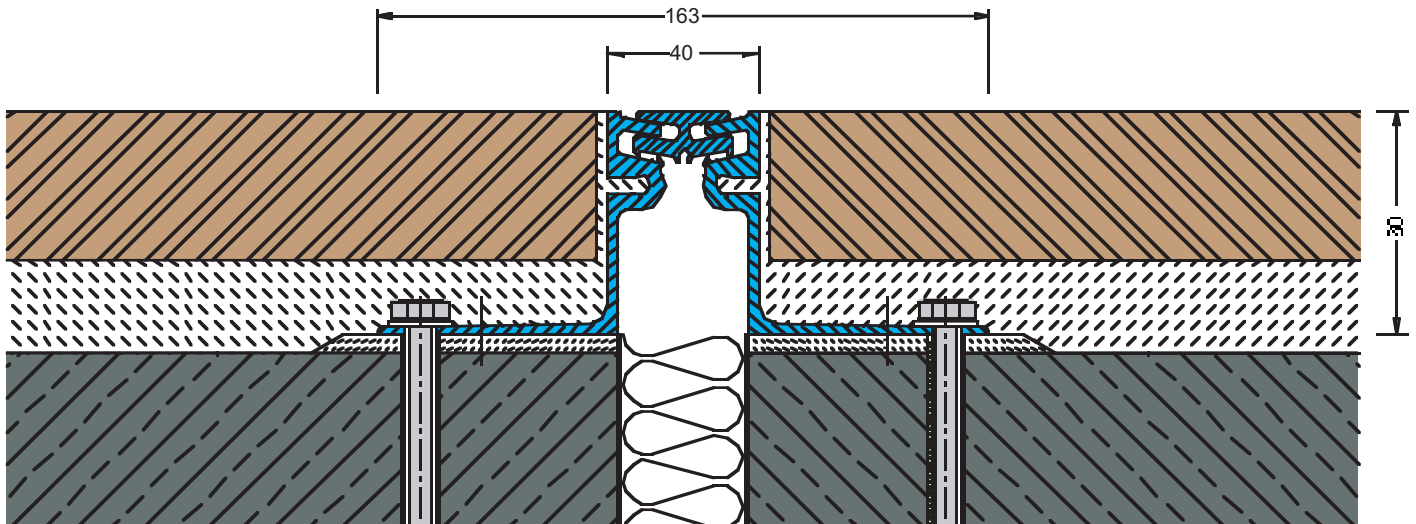
Profile	Joint width max. mm	Total Movement mm	Visible Width of Profile mm	Total Width of Profile mm	Installation Height mm	Load capacity Lorries (DIN 1072) MP	Load capacity Fork lift trucks (DIN 1055) MP	Load capacity Solid plastic tyres kg/mm width of wheel
FS 40/1900	35	16 ± 8	40	173	19	30	7	6,5
FS 40/3500	35	16 ± 8	40	163	35	30	7	6,5
FS 40/6000	35	16 ± 8	40	163	60	30	7	6,5

Material description, important notes and special properties = Page 2

Intersections = Page 26

Additional examples for application = Page 21–24

Installation instruction = Page 32



FS 40/6000

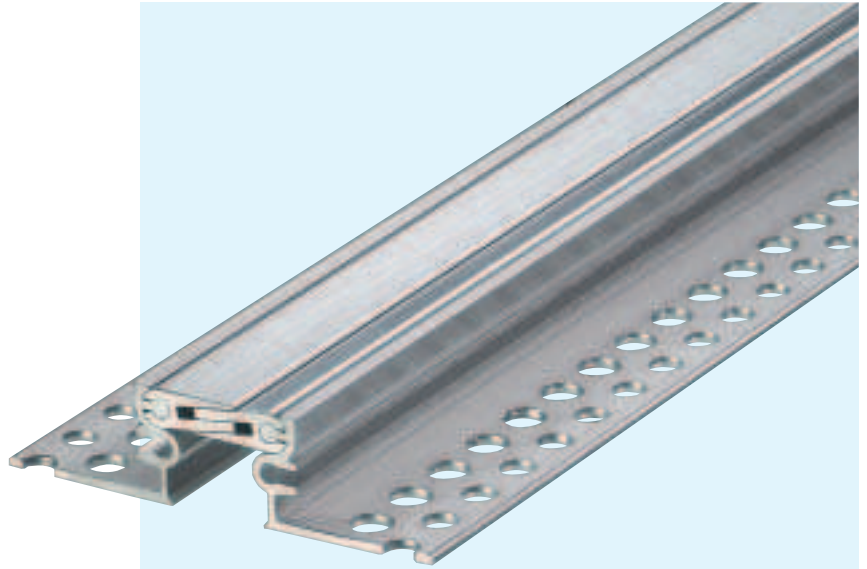
Scale 1 : 2

SERIES FS 50/...

FOR FLOORS – TO BE USED BY LIGHT FORK LIFT AND PALLET TRUCKS

MIGUTRANS

- **VISIBLE SURFACE SHOWS NO GAPS (TO AVOID DIRT ACCUMULATION)**
- **SOLID ALL METAL-PROFILE (HARD WEARING, MAINTENANCE-FREE, LONG LASTING)**
- **PROFILE ABSORBS MOVEMENT IN THREE DIRECTIONS**
- **INSTALLATION HEIGHT FROM 20 MM UPWARDS**



TECHNICAL DATA

Profile	Joint width max. mm	Total Movement mm	Visible Width of Profile mm	Total Width of Profile mm	Installation Height mm	Load capacity Lorries (DIN 1072) MP	Load capacity Fork lift trucks (DIN 1055) MP	Load capacity Solid plastic tyres kg/mm width of wheel
FS 50/2000	30	10 ± 5	53	140	20	9	3,5	3
FS 50/3500	30	10 ± 5	53	140	35	9	3,5	3
FS 50/5000	30	10 ± 5	53	140	50	9	3,5	3

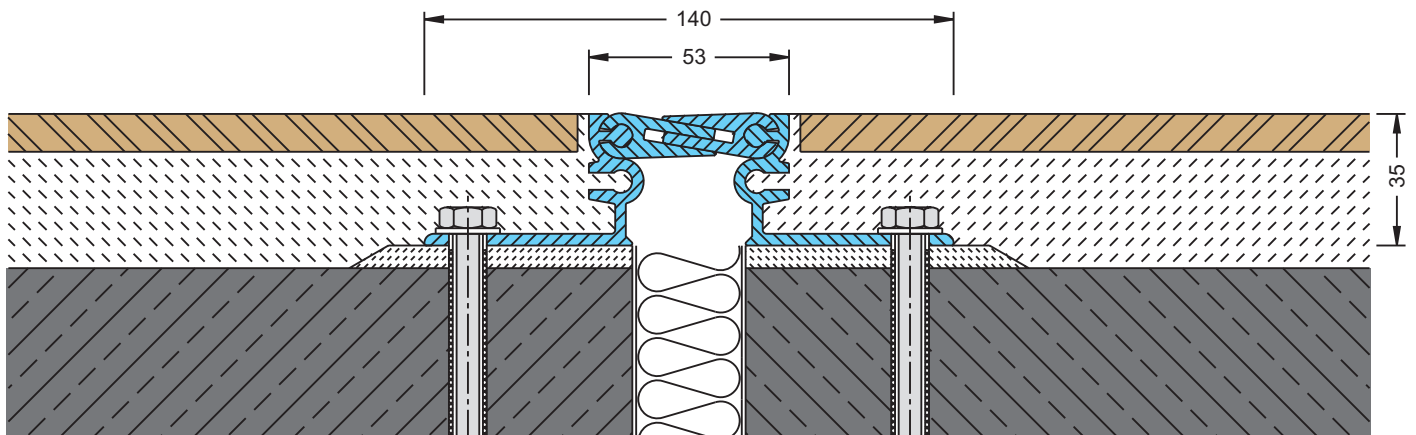
Material description, important notes and special properties = Page 2

Corner-version E4 = Page 15

Intersections = Page 26

Additional examples for application = Page 21–24

Installation instruction = Page 32



FS 50/3500

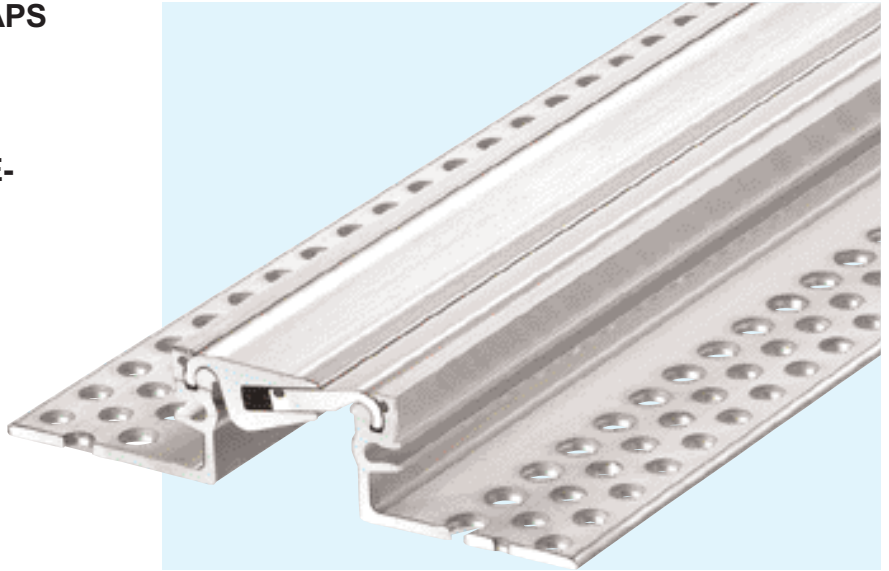
Scale 1 : 2

SERIES FS 75/...

FOR HEAVY DUTY FLOORS – TO BE USED BY FORK LIFT AND PALLET TRUCKS

MIGUTRANS

- **VISIBLE SURFACE SHOWS NO GAPS (TO AVOID DIRT ACCUMULATION)**
- **SOLID ALL METAL-PROFILE (HARD WEARING, MAINTENANCE-FREE, LONG LASTING)**
- **OFFICAL TEST CERTIFICATE ON LOAD CAPACITY AVAILABLE**
- **PROFILE ABSORBS MOVEMENT IN THREE DIRECTIONS**
- **INSTALLATION HEIGHT FROM 22 MM UPWARDS**



TECHNICAL DATA

Profile	Joint width max. mm	Total Movement mm	Visible Width of Profile mm	Total Width of Profile mm	Installation Height mm	Load capacity Lorries (DIN 1072) MP	Load capacity Fork lift trucks (DIN 1055) MP	Load capacity Solid plastic tyres kg/mm width of wheel
FS 75/2200	50	20 ± 10	77	193	22	30	10	9
FS 75/3000	50	20 ± 10	77	193	30	30	10	9
FS 75/4200	50	20 ± 10	77	197	42	30	10	9
FS 75/5200	50	20 ± 10	77	197	52	30	10	9
FS 75/6200	50	20 ± 10	77	197	62	30	10	9
FS 75/7700	50	20 ± 10	77	197	77	30	7	9
FS 75/8700	50	20 ± 10	77	197	87	30	7	9
FS 75/9700	50	20 ± 10	77	197	97	30	7	9

Material description, important notes and special properties = Page 2

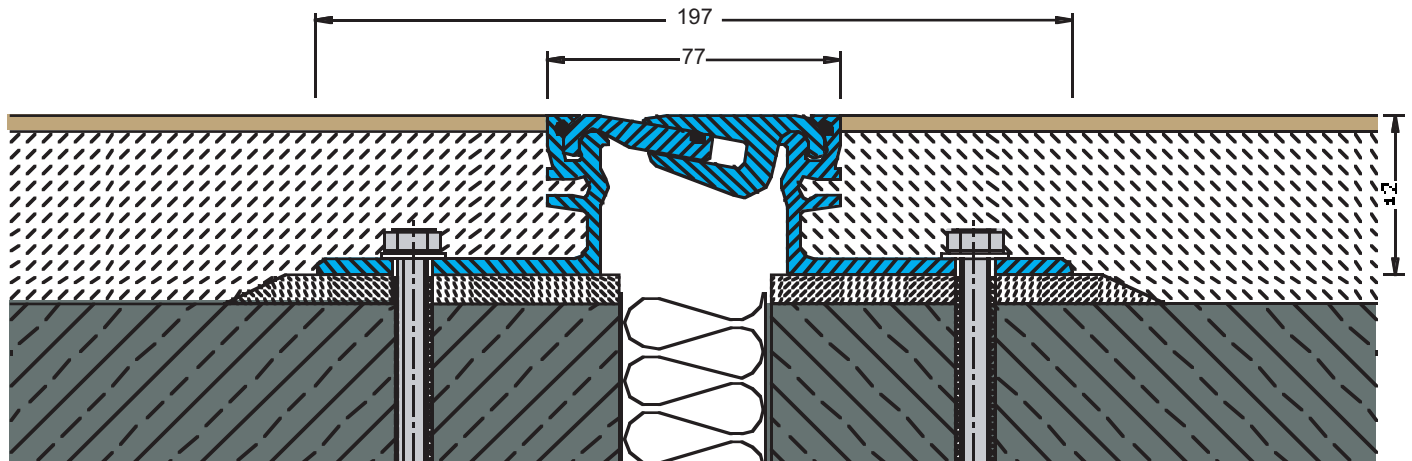
Larger installation heights = Page 23

Corner-versions = Page 15+18

Intersections = Page 26

Additional examples for application = Page 21–24

Installation instruction = Page 32



FS 75/4200

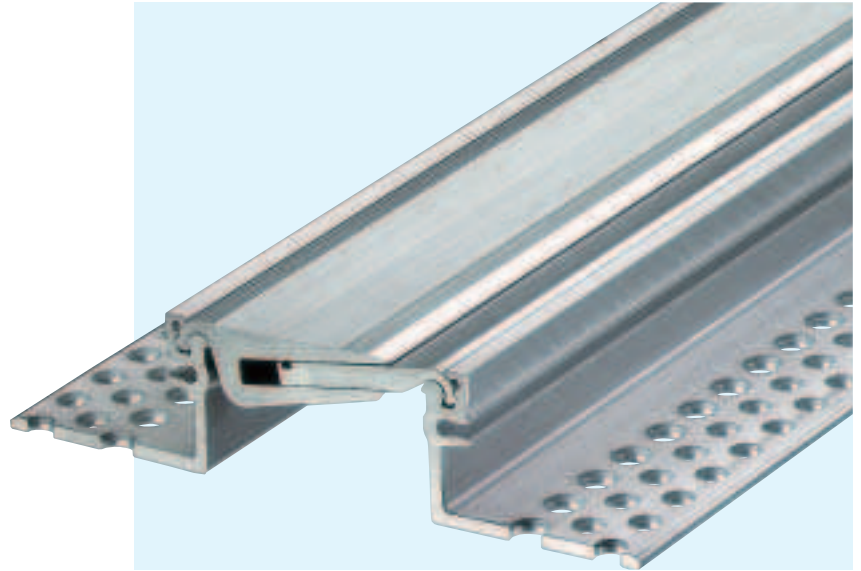
Scale 1 : 2

SERIES FS 110/...

FOR HEAVY DUTY FLOORS – TO BE USED BY FORK LIFT AND PALLET TRUCKS

MIGUTRANS

- **VISIBLE SURFACE SHOWS NO GAPS (TO AVOID DIRT ACCUMULATION)**
- **SOLID ALL METAL-PROFILE (HARD WEARING, MAINTENANCE-FREE, LONG LASTING)**
- **PROFILE ABSORBS MOVEMENT IN THREE DIRECTIONS**
- **MOVEMENT CAPACITY 30 MM**
- **FOR JOINT WIDTHS UP TO 75 MM**



TECHNICAL DATA

Profile	Joint width max. mm	Total Movement mm	Visible Width of Profile mm	Total Width of Profile mm	Installation Height mm	Load capacity Lorries (DIN 1072) MP	Load capacity Fork lift trucks (DIN 1055) MP	Load capacity Solid plastic tyres kg/mm width of wheel
FS 110/3000	75	30 ± 15	110	226	30	30	7	6,5
FS 110/4200	75	30 ± 15	110	230	42	30	7	6,5
FS 110/5200	75	30 ± 15	110	230	52	30	7	6,5
FS 110/6200	75	30 ± 15	110	230	62	30	7	6,5
FS 110/7700	75	30 ± 15	110	230	77	30	7	6,5
FS 110/8700	75	30 ± 15	110	230	87	30	7	6,5
FS 110/9700	75	30 ± 15	110	230	97	30	7	6,5

Material description, important notes and special properties = Page 2

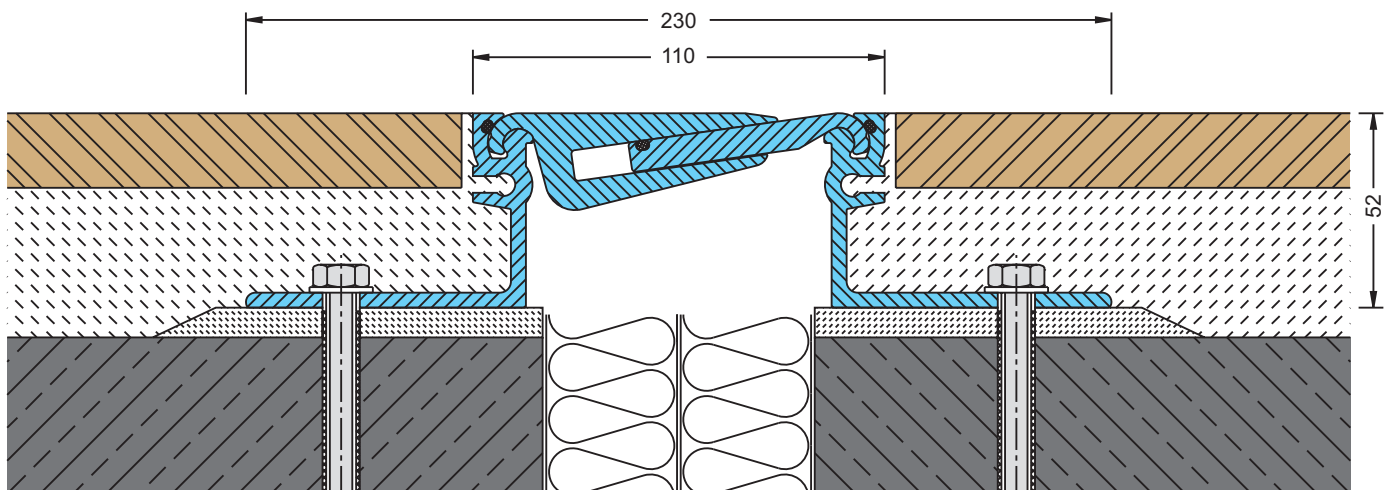
Larger installation heights = Page 23

Corner-versions = Page 15+18

Intersections = Page 26

Additional examples for application = Page 21–24

Installation instruction = Page 32



FS 110/5200

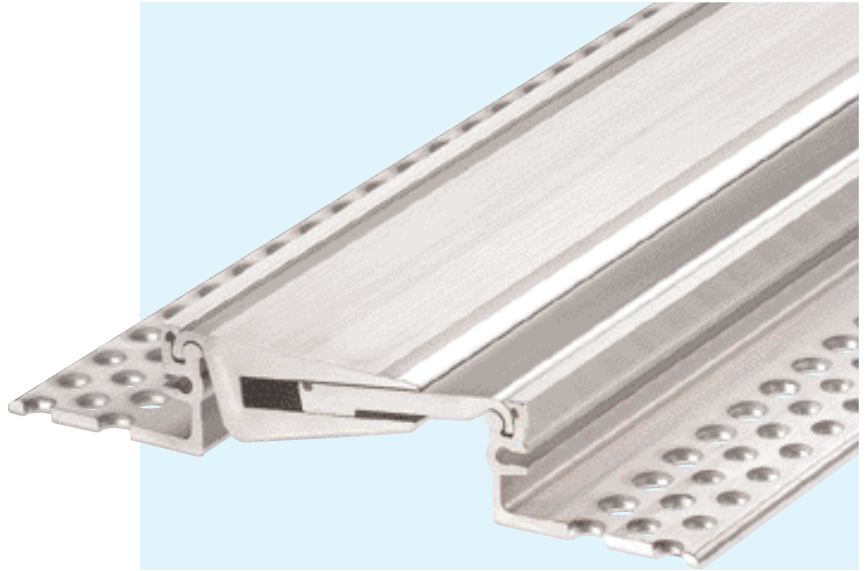
Scale 1 : 2

SERIES FS 130/...

FOR HEAVY DUTY FLOORS – TO BE USED BY FORK LIFT AND PALLET TRUCKS

MIGUTRANS

- **VISIBLE SURFACE SHOWS NO GAPS (TO AVOID DIRT ACCUMULATION)**
- **SOLID ALL METAL-PROFILE (HARD WEARING, MAINTENANCE-FREE, LONG LASTING)**
- **PROFILE ABSORBS MOVEMENT IN THREE DIRECTIONS**
- **MOVEMENT CAPACITY 40 MM**
- **FOR JOINT WIDTHS UP TO 100 MM**



TECHNICAL DATA

Profile	Joint width max. mm	Total Movement mm	Visible Width of Profile mm	Total Width of Profile mm	Installation Height mm	Load capacity Lorries (DIN 1072) MP	Load capacity Fork lift trucks (DIN 1055) MP	Load capacity Solid plastic tyres kg/mm width of wheel
FS 130/4200	100	40 ± 20	134	254	42	30	7	6,5
FS 130/5200	100	40 ± 20	134	254	52	30	7	6,5
FS 130/6200	100	40 ± 20	134	254	62	30	7	6,5
FS 130/7700	100	40 ± 20	134	254	77	30	7	6,5
FS 130/8700	100	40 ± 20	134	254	87	30	7	6,5
FS 130/9700	100	40 ± 20	134	254	97	30	7	6,5

Material description, important notes and special properties = Page 2

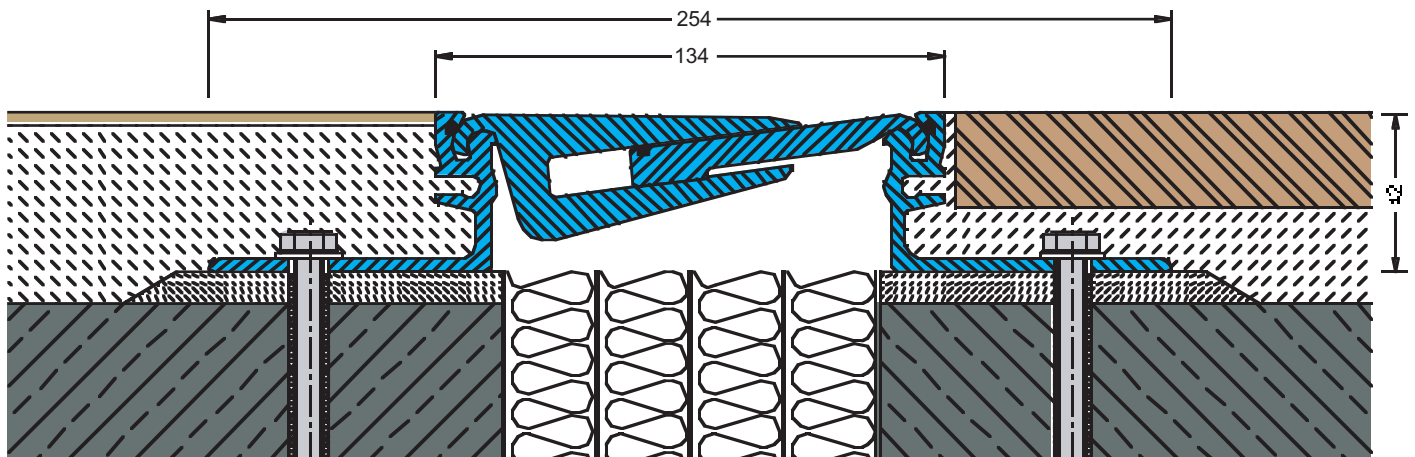
Larger installation heights = Page 23

Corner - versions = Page 16+18

Intersections = Page 26

Additional examples for application = Page 21–24

Installation instruction = Page 32



FS 130/4200

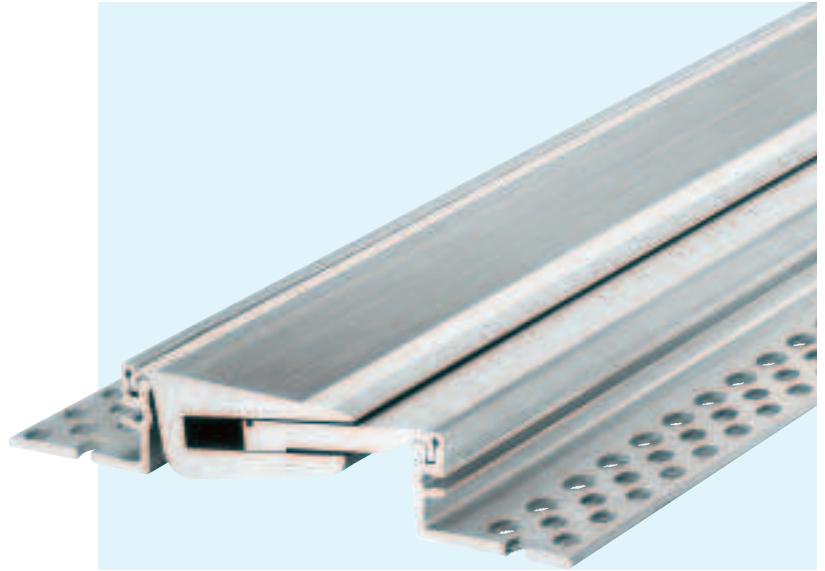
Scale 1 : 2

SERIES FS 160/...

FOR HEAVY DUTY FLOORS – TO BE USED BY FORK LIFT AND PALLET TRUCKS

MIGUTRANS

- **VISIBLE SURFACE SHOWS NO GAPS (TO AVOID DIRT ACCUMULATION)**
- **SOLID ALL METAL PROFILE (HARD WEARING, MAINTENANCE-FREE, LONG LASTING)**
- **PROFILE ABSORBS MOVEMENTS IN THREE DIRECTIONS**
- **MOVEMENT CAPACITY 60 MM**
- **FOR JOINT WIDTHS UP TO 130 MM**



TECHNICAL DATA

Profile	Joint width max. mm	Total Movement mm	Visible Width of Profile mm	Total Width of Profile mm	Installation Height mm	Load capacity Lorries (DIN 1072) MP	Load capacity Fork lift trucks (DIN 1055) MP	Load capacity Solid plastic tyres kg/mm width of wheel
FS 160/4200	130	60 ± 30	162	284	42	30	7	6,5
FS 160/5200	130	60 ± 30	162	284	52	30	7	6,5
FS 160/6200	130	60 ± 30	162	284	62	30	7	6,5
FS 160/7700	130	60 ± 30	162	284	77	30	7	6,5
FS 160/8700	130	60 ± 30	162	284	87	30	7	6,5
FS 160/9700	130	60 ± 30	162	284	97	30	7	

Material description, important notes and special properties = Page 2

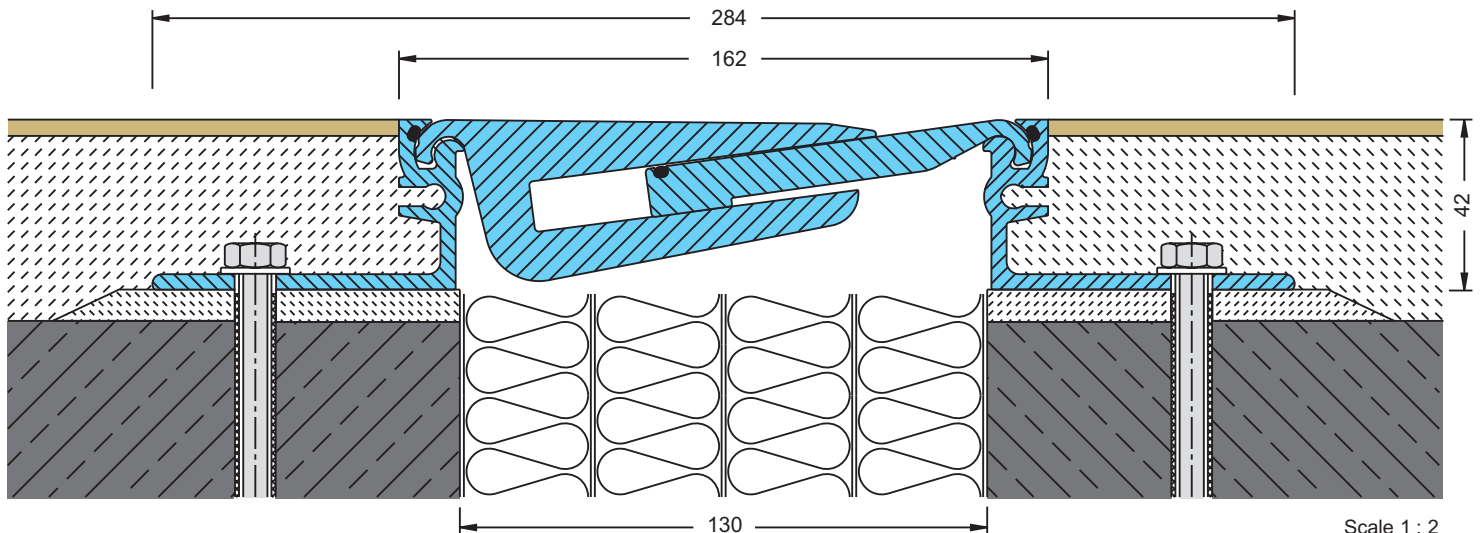
Larger installation heights = Page 23

Corner - versions = Page 16+19

Intersections = Page 26

Additional examples for application = Page 21–24

Installation instruction = Page 32

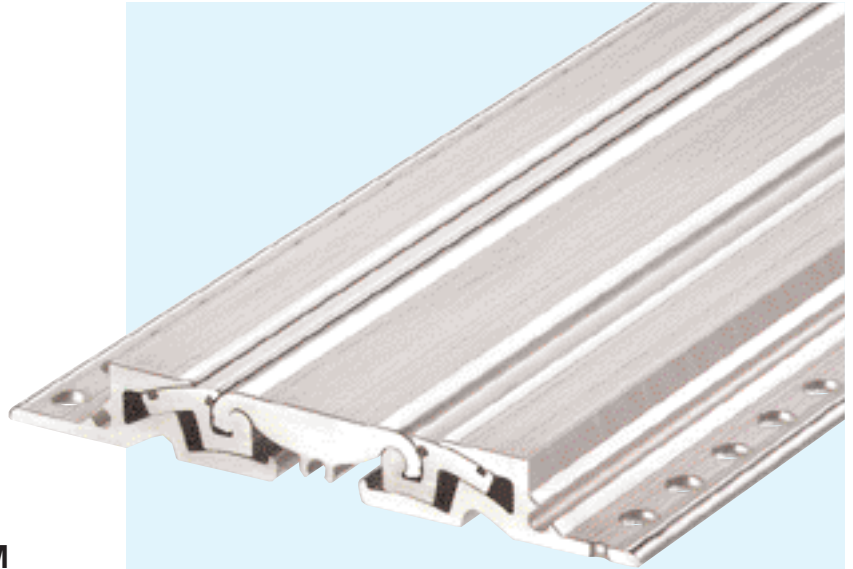


Scale 1 : 2

SERIES FS 135/...
FOR FLOORS WITH EXTRA HIGH LOAD CAPACITY

MIGUTRANS

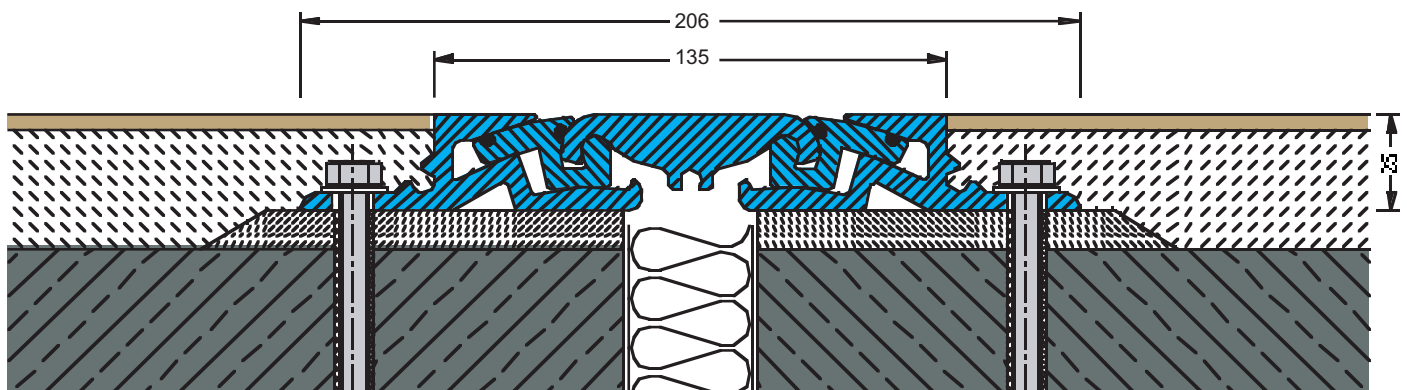
- **VISIBLE SURFACE SHOWS NO GAPS (TO AVOID DIRT ACCUMULATION)**
- **SOLID ALL METAL-PROFILE (HARD WEARING, MAINTENANCE-FREE, LONG LASTING)**
- **PROFILE ABSORBS MOVEMENT IN THREE DIRECTIONS**
- **EXTREMELY HIGH LOAD CAPACITY**
- **INSTALLATION HEIGHT ONLY 25 MM**



TECHNICAL DATA

Profile	Joint width max. mm	Total Movement mm	Visible Width of Profile mm	Total Width of Profile mm	Installation Height mm	Load capacity Lorries (DIN 1072) MP	Load capacity Fork lift trucks (DIN 1055) MP	Load capacity Solid plastic tyres kg/mm width of wheel
FS 135/2500	35	20 ± 10	135	206	25	60	25	30

Material description, important notes and special properties = Page 2
Intersections = Page 26
Additional examples for application = Page 22–24
Installation instruction = Page 32



FS 135/2500

Scale 1 : 2

SERIES FS 155/...

FOR HEAVY DUTY FLOORS

MIGUTRANS

- **VISIBLE SURFACE SHOWS NO GAPS (TO AVOID DIRT ACCUMULATION)**
- **SOLID ALL METAL PROFILE (HARD WEARING, MAINTENANCE-FREE, LONG LASTING)**
- **PROFILE ABSORBS MOVEMENTS IN THREE DIRECTIONS**
- **MOVEMENT CAPACITY 40 MM**
- **FOR JOINT WIDTHS UP TO 120 MM**



TECHNICAL DATA

Profile	Joint width max. mm	Total Movement mm	Visible Width of Profile mm	Total Width of Profile mm	Installation Height mm	Load capacity Lorries (DIN 1072) MP	Load capacity Fork lift trucks (DIN 1055) MP	Load capacity Solid plastic tyres kg/mm width of wheel
FS 155/3000	120	40 ± 20	157	273	30	60	13	15
FS 155/4200	120	40 ± 20	157	273	42	60	13	15
FS 155/5200	120	40 ± 20	157	273	52	60	13	15
FS 155/6200	120	40 ± 20	157	273	62	60	13	15
FS 155/7700	120	40 ± 20	157	273	77	60	13	15
FS 155/8700	120	40 ± 20	157	273	87	60	13	15
FS 155/9700	120	40 ± 20	157	273	97	60	13	15

Material description, important notes and special properties = Page 2

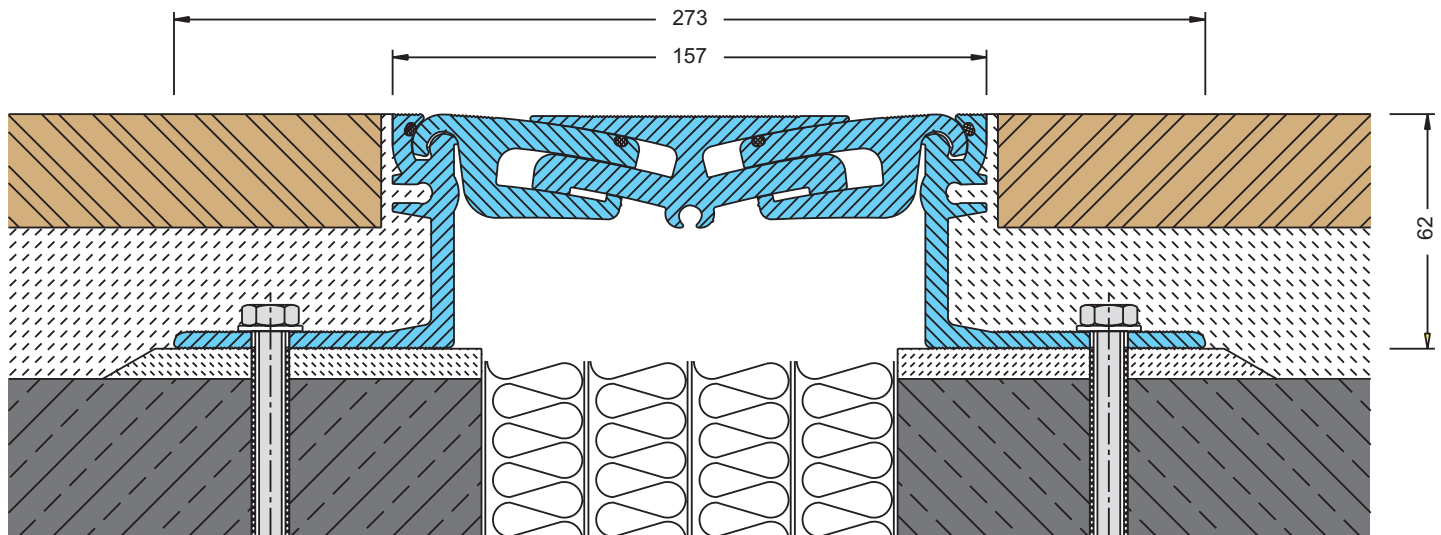
Larger installation heights = Page 23

Corner - versions = Page 16+19

Intersections = Page 26

Additional examples for application = Page 21–24

Installation instruction = Page 32



FS 155/6200

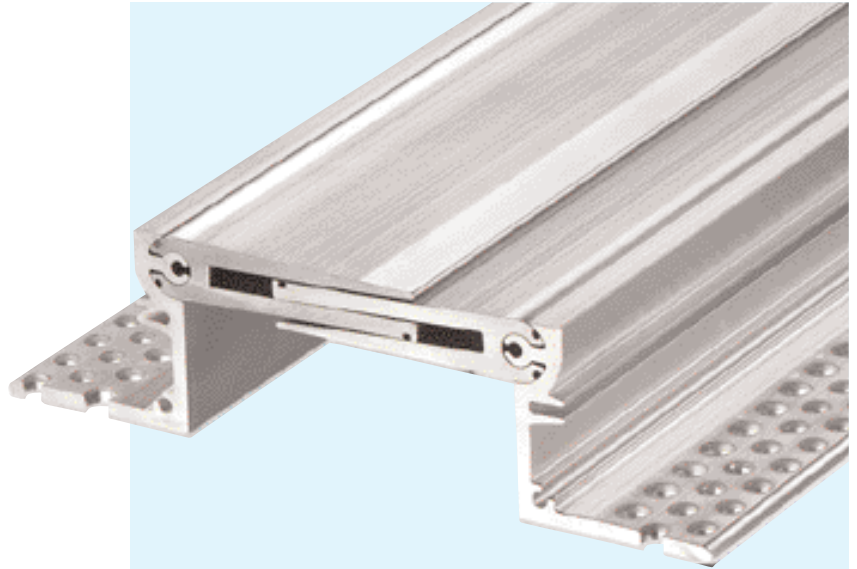
Scale 1 : 2

SERIES FS 185/...

FOR HEAVY DUTY FLOORS – TO BE USED BY FORK LIFT AND PALLET TRUCKS

MIGUTRANS

- **VISIBLE SURFACE SHOWS NO GAPS (TO AVOID DIRT ACCUMULATION)**
- **SOLID ALL METAL-PROFILE (HARD WEARING, MAINTENANCE-FREE, LONG LASTING)**
- **PROFILE ABSORBS MOVEMENT IN THREE DIRECTIONS**
- **MOVEMENT CAPACITY 60 MM**
- **FOR JOINT WIDTHS UP TO 140 MM**



TECHNICAL DATA

Profile	Joint width max. mm	Total Movement mm	Visible Width of Profile mm	Total Width of Profile mm	Installation Height mm	Load capacity Lorries (DIN 1072) MP	Load capacity Fork lift trucks (DIN 1055) MP	Load capacity Solid plastic tyres kg/mm width of wheel
FS 185/4000	140	60 ± 30	185	305	40	30	7	6,5
FS 185/8000	140	60 ± 30	185	305	80	30	7	6,5

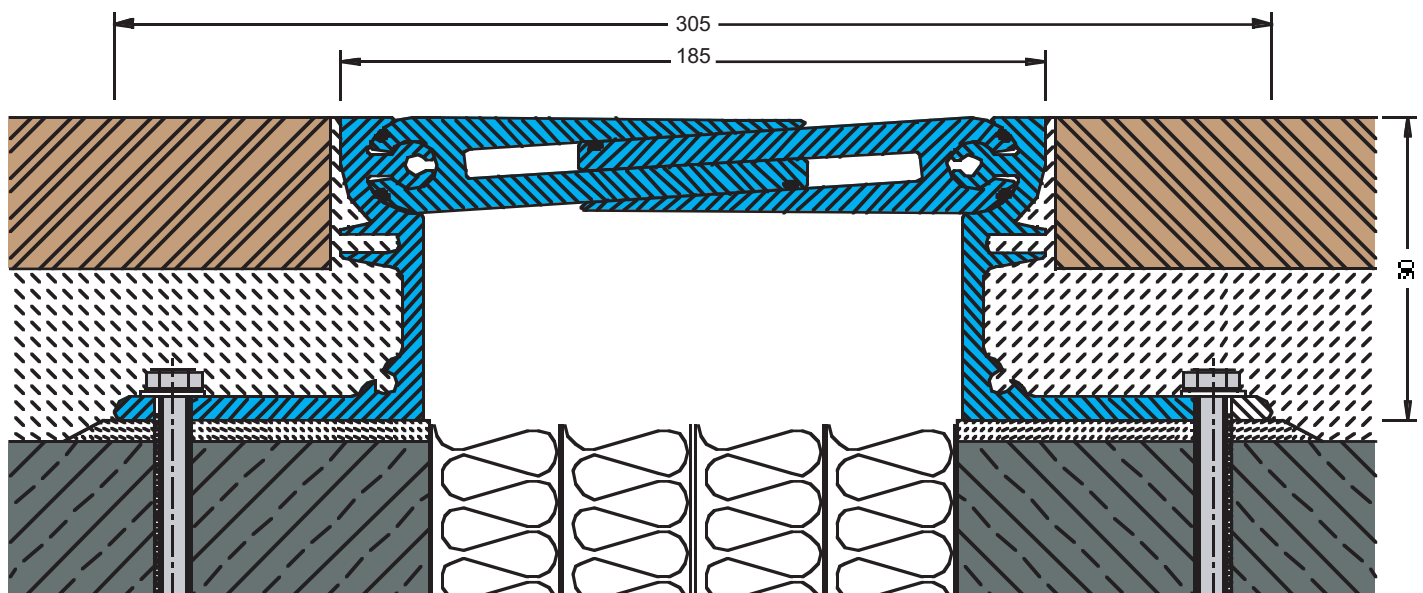
Material description, important notes and special properties = Page 2

Corner - versions = Page 17+19

Intersections = Page 26

Additional examples for application = Page 21–24

Installation instruction = Page 32



FS 185/8000

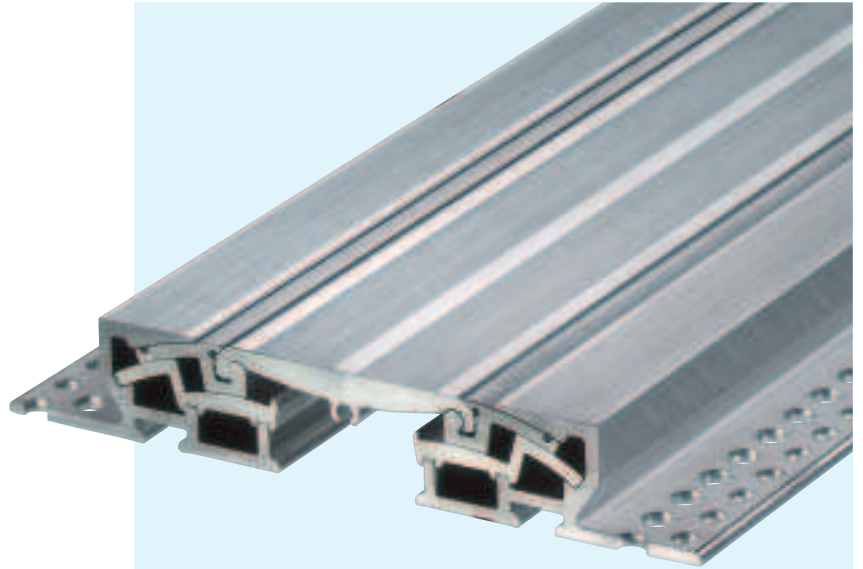
Scale 1 : 2

SERIES FS 200/...

FOR FLOORS WITH HIGH LOAD CAPACITY AND EXTREME MOVEMENTS

MIGUTRANS

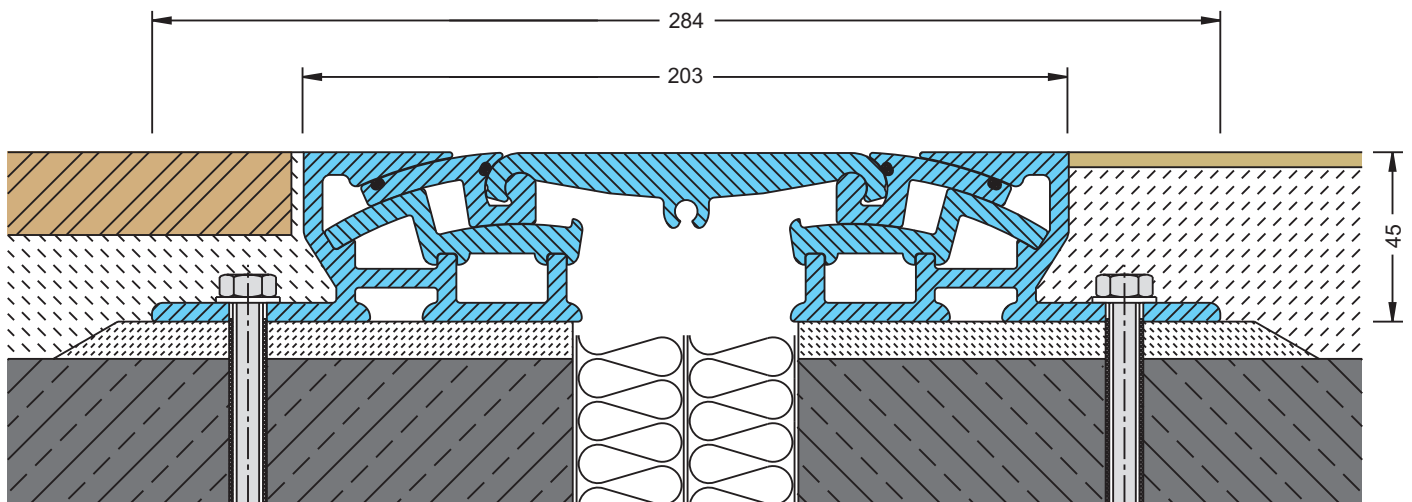
- **VISIBLE SURFACE SHOWS NO GAPS (TO AVOID DIRT ACCUMULATION)**
- **SOLID ALL METAL-PROFILE (HARD WEARING, MAINTENANCE-FREE, LONG LASTING)**
- **PROFILE ABSORBS MOVEMENT IN THREE DIRECTIONS**
- **HIGH LOAD CAPACITY**
- **MOVEMENT CAPACITY 40 MM**



TECHNICAL DATA

Profile	Joint width max. mm	Total Movement mm	Visible Width of Profile mm	Total Width of Profile mm	Installation Height mm	Load capacity Lorries (DIN 1072) MP	Load capacity Fork lift trucks (DIN 1055) MP	Load capacity Solid plastic tyres kg/mm width of wheel
FS 200/2500	60	40 ± 20	203	284	25	60	13	15
FS 200/4500	60	40 ± 20	203	284	45	13	15	

Material description, important notes and special properties = Page 2
 Intersections = Page 26
 Additional examples for application = Page 21–24
 Installation instruction = Page 32



FS 200/4500

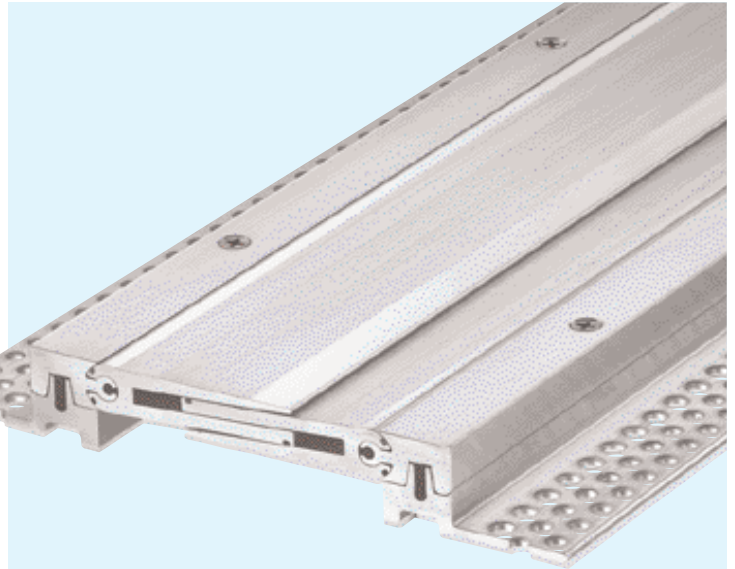
Scale 1 : 2

SERIES FSV 235/...

FOR FLOORS WITH HIGH LOAD CAPACITY AND EXTREME MOVEMENTS

MIGUTRANS

- **VISIBLE SURFACE SHOWS NO GAPS (TO AVOID DIRT ACCUMULATION)**
- **SOLID ALL METAL-PROFILE (HARD WEARING, MAINTENANCE-FREE, LONG LASTING)**
- **PROFILE ABSORBS MOVEMENT IN THREE DIRECTIONS**
- **REPLACEABLE BRIDGING UNIT**
- **FOR JOINT WIDTHS UP TO 150 MM**



TECHNICAL DATA

Profile	Joint width max. mm	Total Movement mm	Visible Width of Profile mm	Total Width of Profile mm	Installation Height mm	Load capacity Lorries (DIN 1072) MP	Load capacity Fork lift trucks (DIN 1055) MP	Load capacity Solid plastic tyres kg/mm width of wheel
FSV 235/4500	150	60 ± 30	235	357	45	30	7	6,5

Material description, important notes and special properties = Page 2

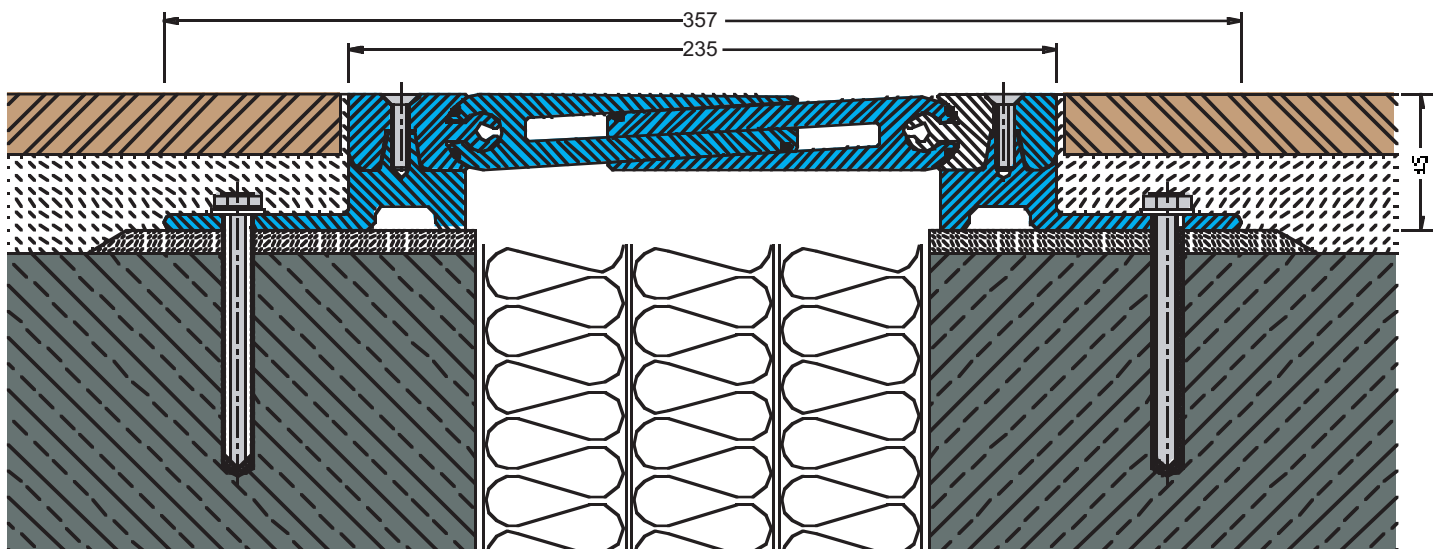
Replacement instruction = Page 24

Corner-versions = Page 17+20

Intersections = Page 26

Additional examples for application = Page 21–24

Installation instruction = Page 32



FSV235/4500

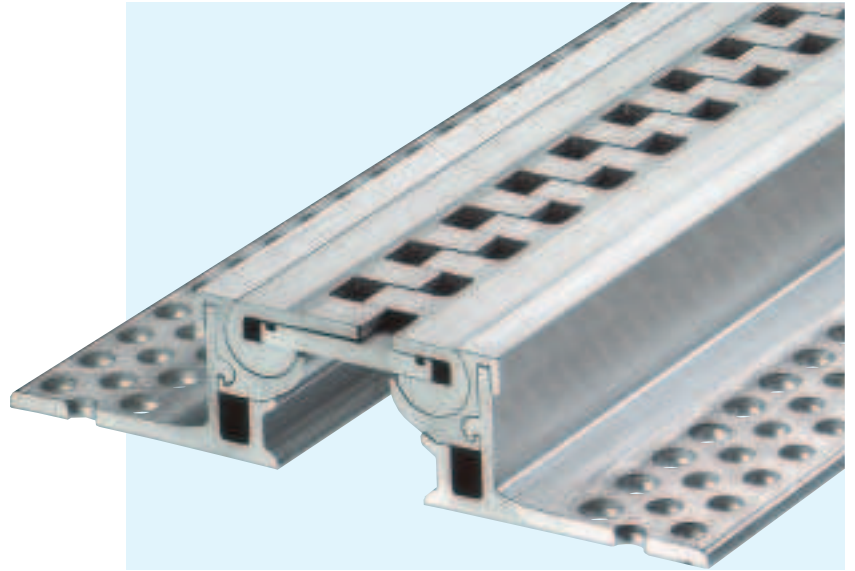
Scale 1 : 2,5

SERIES FS 100/...

FOR FLOORS WITH HIGH LOAD CAPACITY (WITH EVEN LOADBEARING SURFACE)

MIGUTRANS

- TRANSITION FREE FROM VIBRATION
- SOLID ALL METAL-PROFILE (HARD WEARING, MAINTENANCE-FREE, LONG LASTING)
- OFFICAL TEST CERTIFICATE ON LOAD CAPACITY AVAILABLE
- PROFILE ABSORBS MOVEMENT IN THREE DIRECTIONS
- FOR JOINT WIDTHS UP TO 50 MM



TECHNICAL DATA

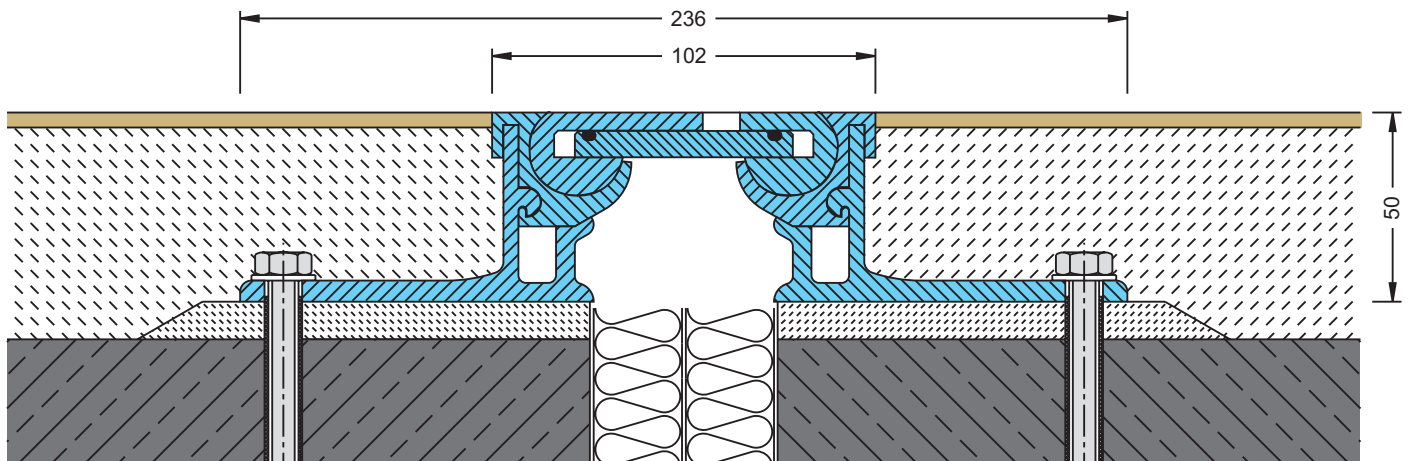
Profile	Joint width max. mm	Total Movement mm	Visible Width of Profile mm	Total Width of Profile mm	Installation Height mm	Load capacity Lorries (DIN 1072) MP	Load capacity Fork lift trucks (DIN 1055) MP	Load capacity Solid plastic tyres kg/mm width of wheel
FS 100/3000	50	20 ± 10	102	236	30	30	7,5	9
FS 100/4000	50	20 ± 10	102	236	40	30	7,5	9
FS 100/5000	50	20 ± 10	102	236	50	30	7,5	9
FS 100/6500	50	20 ± 10	102	236	65	on request	on request	on request
FS 100/7500	50	20 ± 10	102	236	75	on request	on request	on request
FS 100/8500	50	20 ± 10	102	236	85	on request	on request	on request

Material description, important notes and special properties = Page 2

Intersections = Page 26

Additional examples for application = Page 21–24

Installation instruction = Page 32



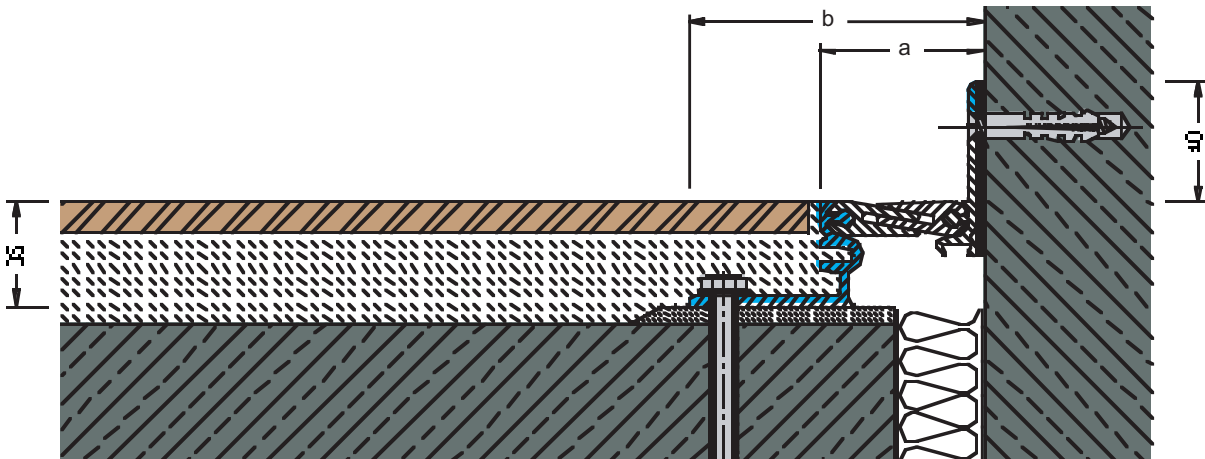
FS 100/5000

Scale 1 : 2

CORNER VERSION E 4

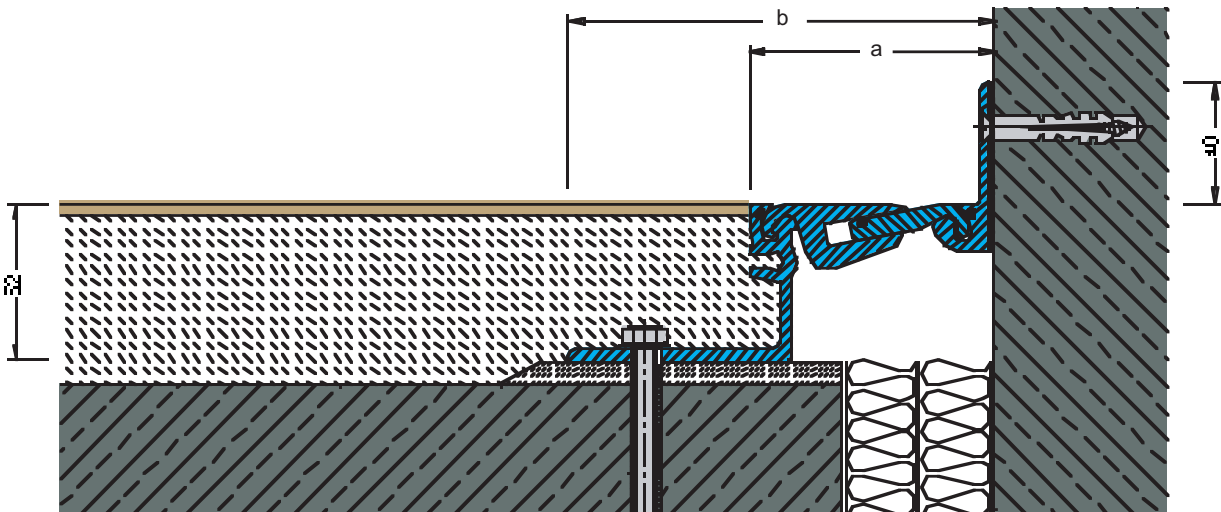
EXPANSION JOINT SYSTEMS

MIGUTRANS



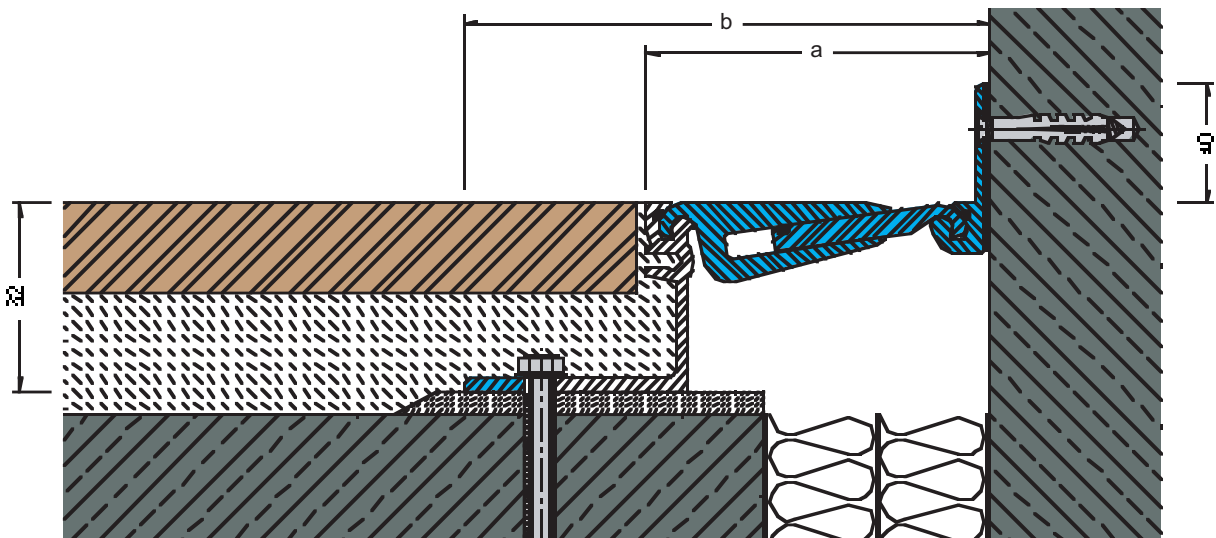
FS 50/3500 E 4

Scale 1 : 2,5



FS 75/5200 E 4

Scale 1 : 2,5



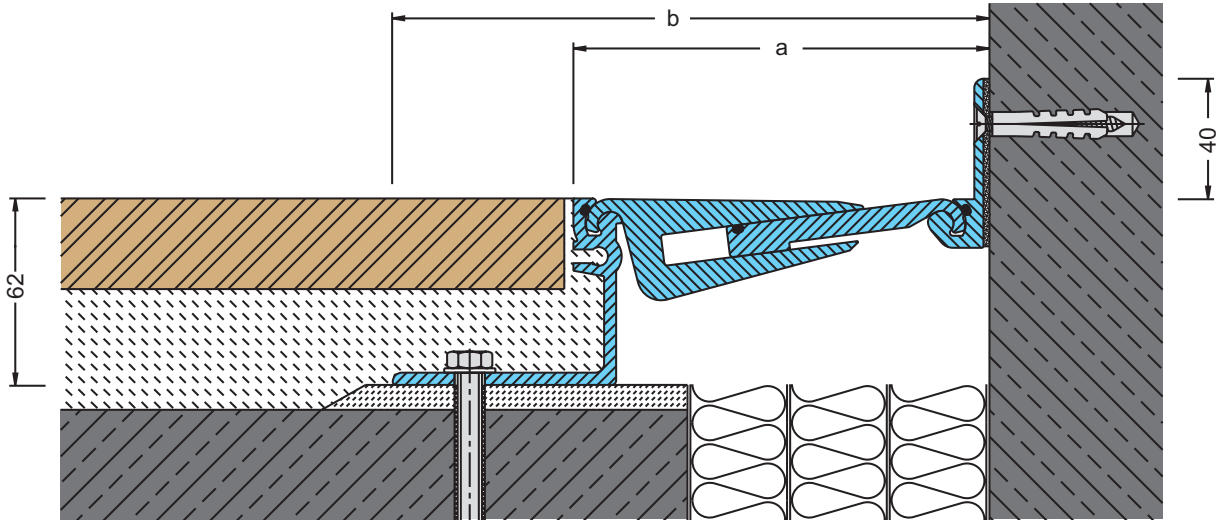
FS 110/6200 E 4

Scale 1 : 2,5

CORNER VERSION E 4

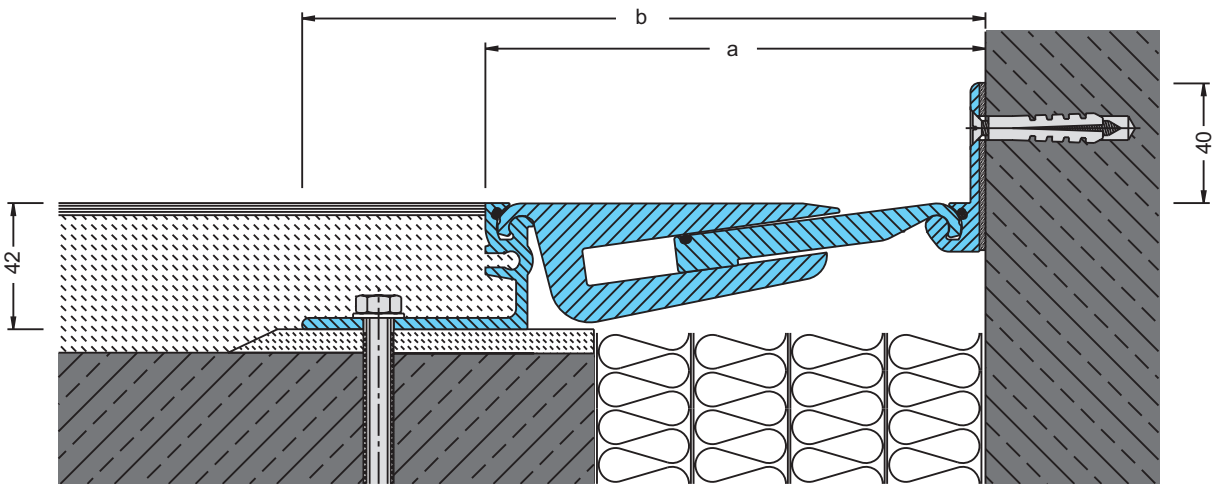
EXPANSION JOINT SYSTEMS

MIGUTRANS



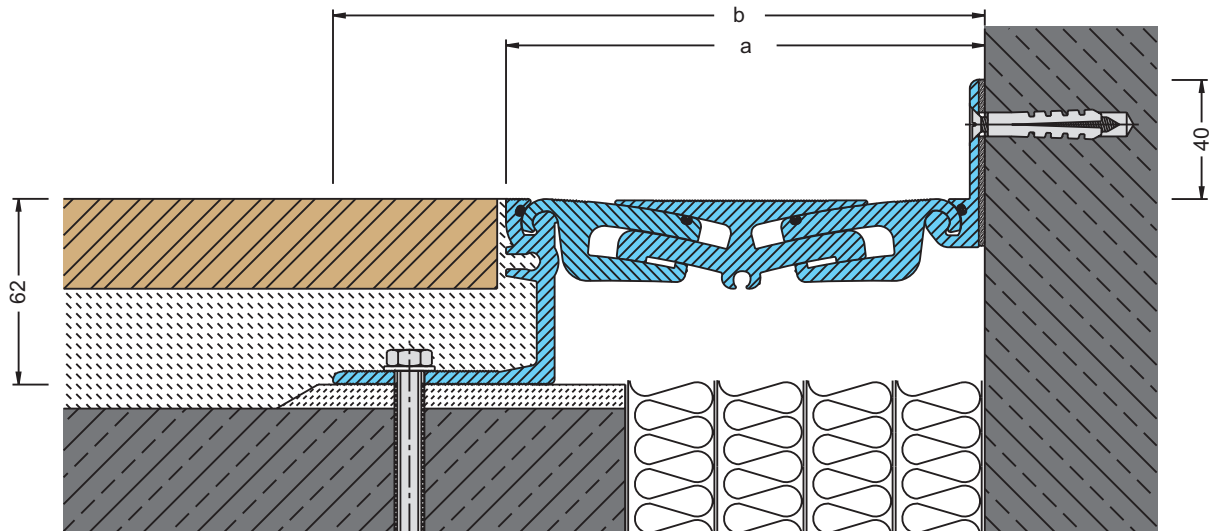
FS 130/6200 E 4

Scale 1 : 2,5



FS 160/4200 E 4

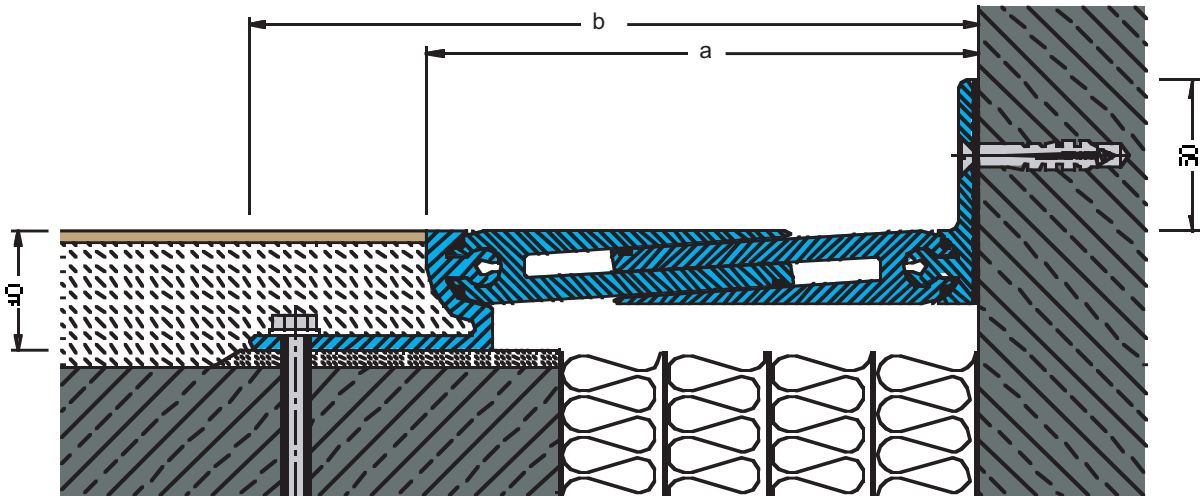
Scale 1 : 2,5



FS 155/6200 E 4

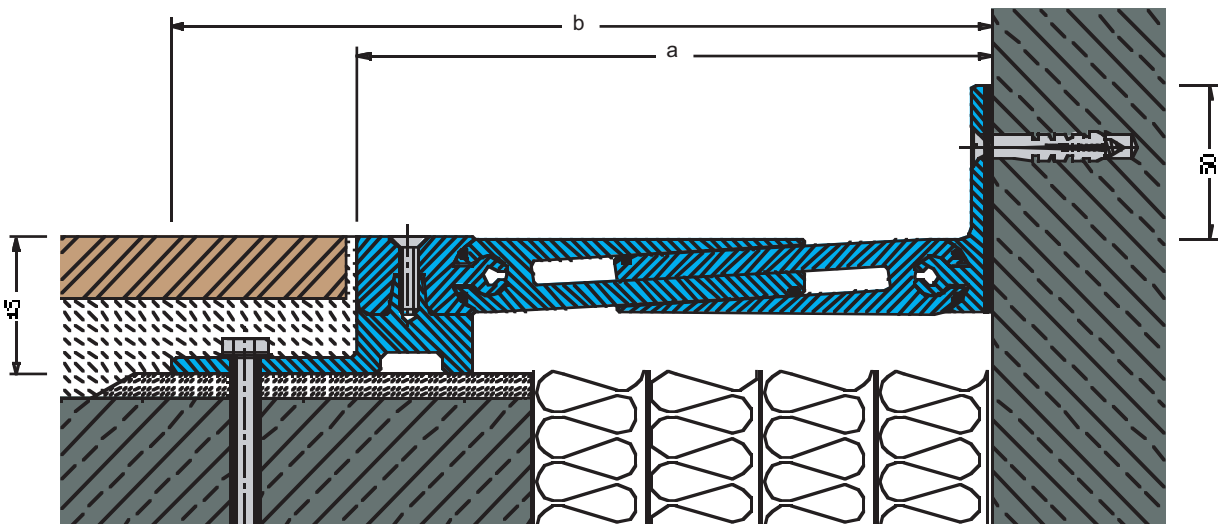
Scale 1 : 2,5

MIGUTRANS



FS 185/4000 E 4

Scale 1 : 2,5



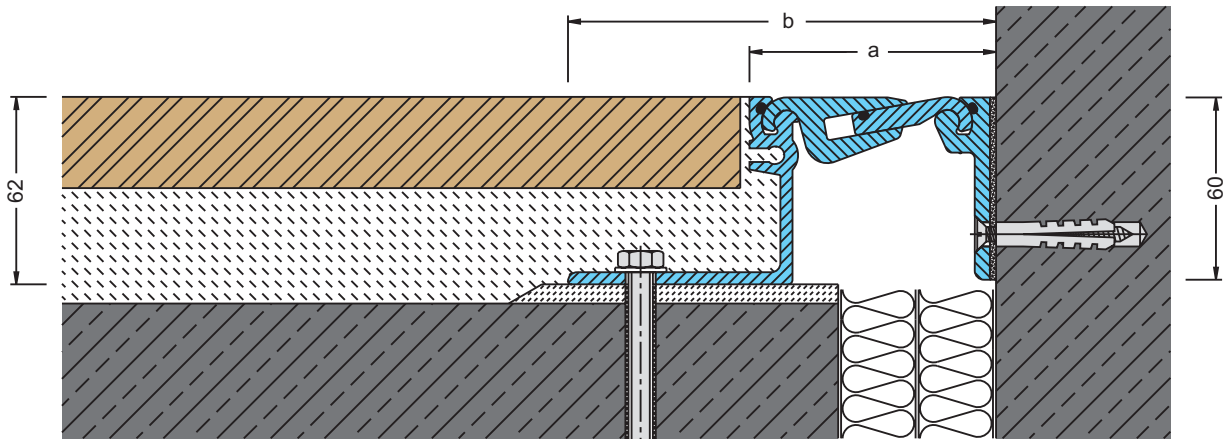
FSV 235/4500 E 4

Scale 1 : 2,5

CORNER VERSION E3

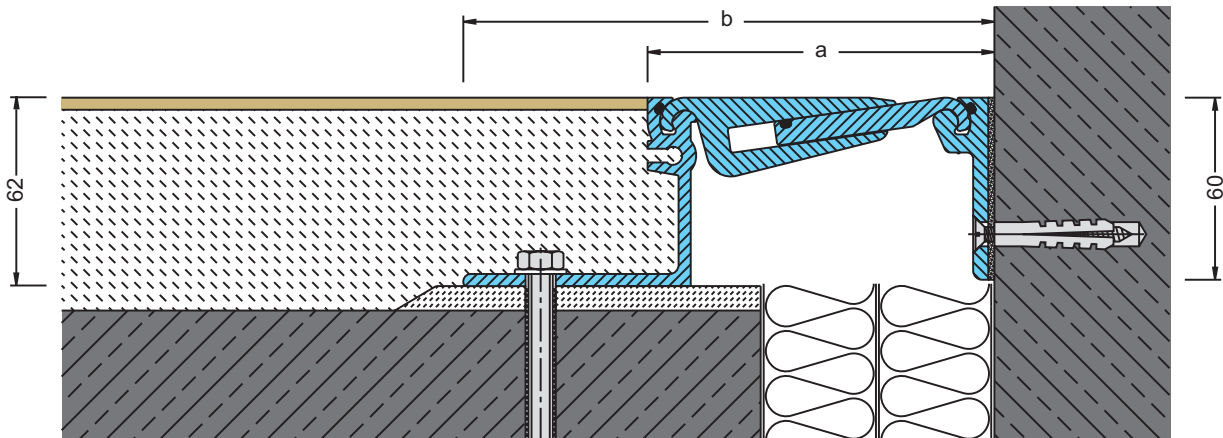
EXPANSION JOINT SYSTEMS

MIGUTRANS



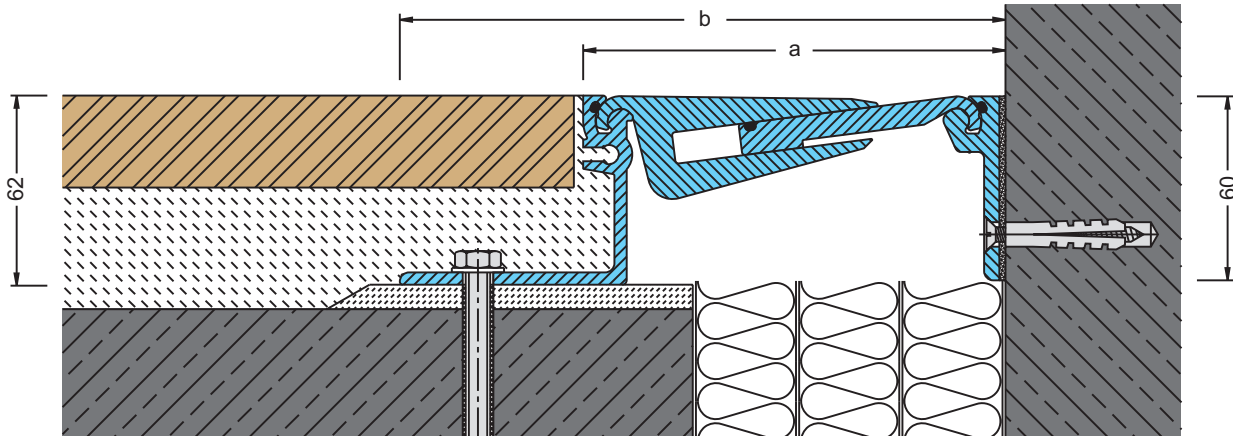
FS 75/6200 E 3

Scale 1 : 2,5



FS 110/6200 E 3

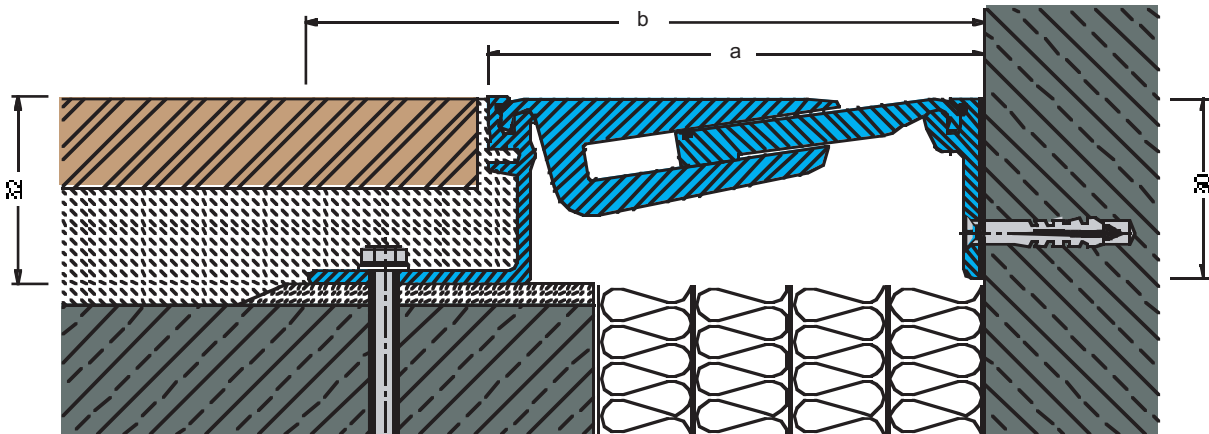
Scale 1 : 2,5



FS 130/6200 E 3

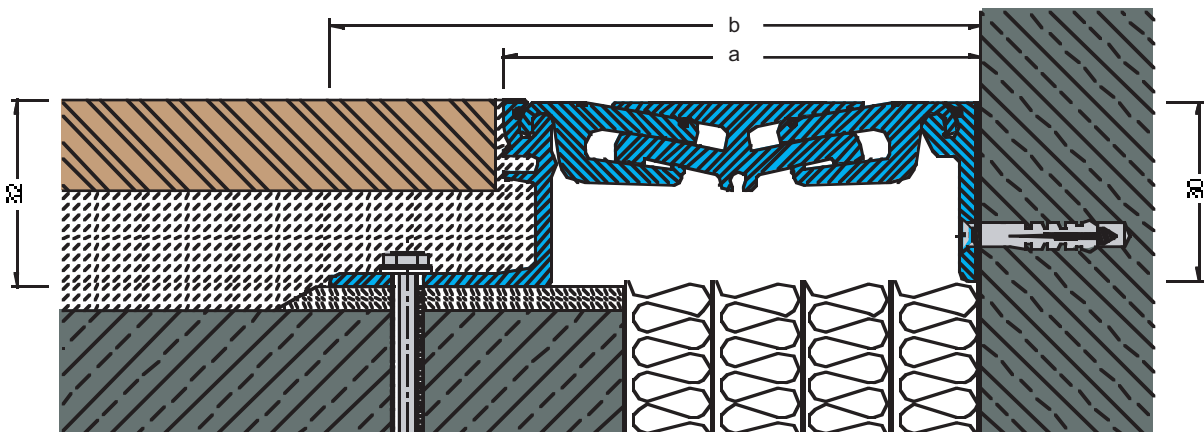
Scale 1 : 2,5

MIGUTRANS



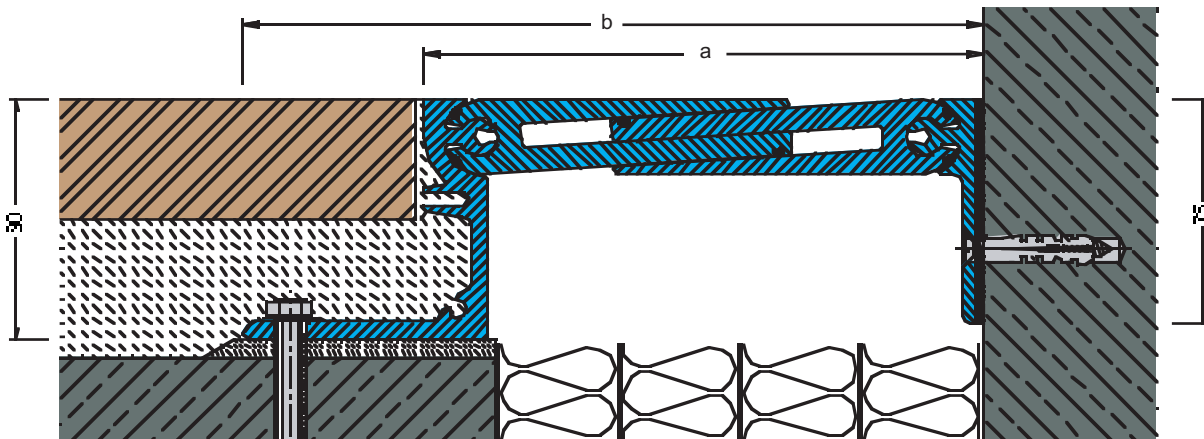
FS 160/6200 E 3

Scale 1 : 2,5



FS 155/6200 E 3

Scale 1 : 2,5



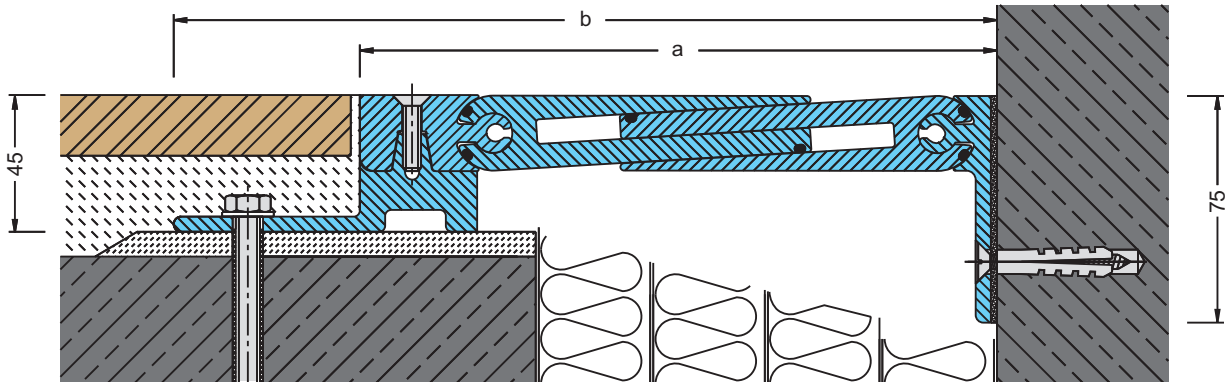
FS 185/8000 E 3

Scale 1 : 2,5

CORNER VERSION E3

EXPANSION JOINT SYSTEMS

MIGUTRANS



FSV 235/4500 E 3

Scale 1 : 2,5

DIMENSIONS

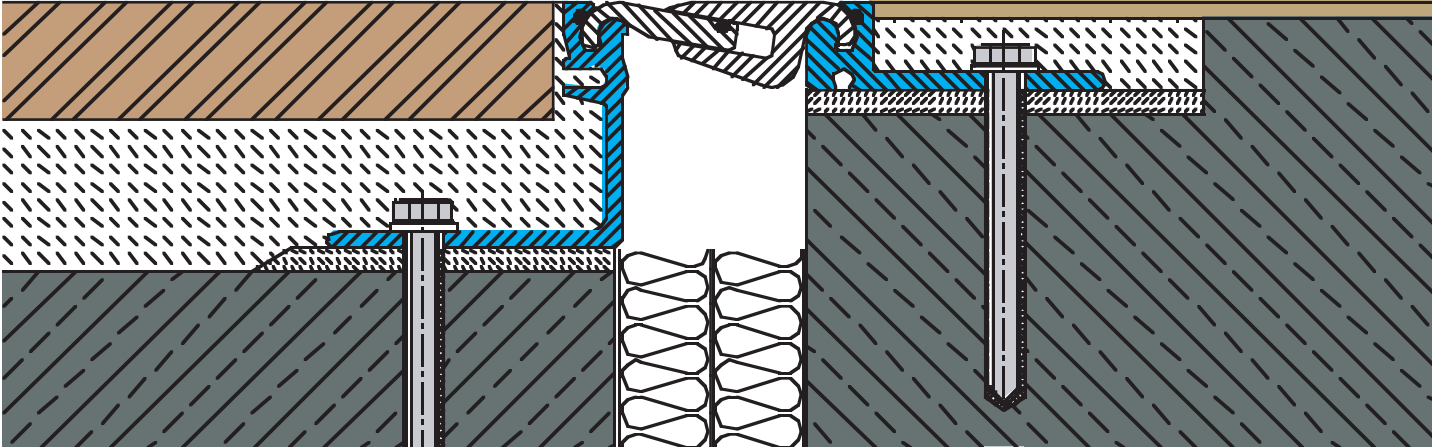
Profile Type	Installation height	E 4		E 3	
		a	b	a	b
FS 50/...	20, 35, 50	55	99	–	–
FS 75/...	22, 30, 42, 52, 62, 77, 87, 97	81	141	81	141
FS 110/...	30, 42, 52, 62, 77, 87, 97	114	174	114	174
FS 130/...	42, 52, 62, 77, 87, 97	138	198	138	198
FS 160/...	42, 52, 62, 77, 87, 97	166	226	166	226
FS 155/...	30, 42, 52, 62, 77, 87, 97	161	218	161	218
FS 185/...	40, 80	186	246	186	246
FSV 235/...	45	210	271	210	271

EXAMPLES FOR APPLICATION

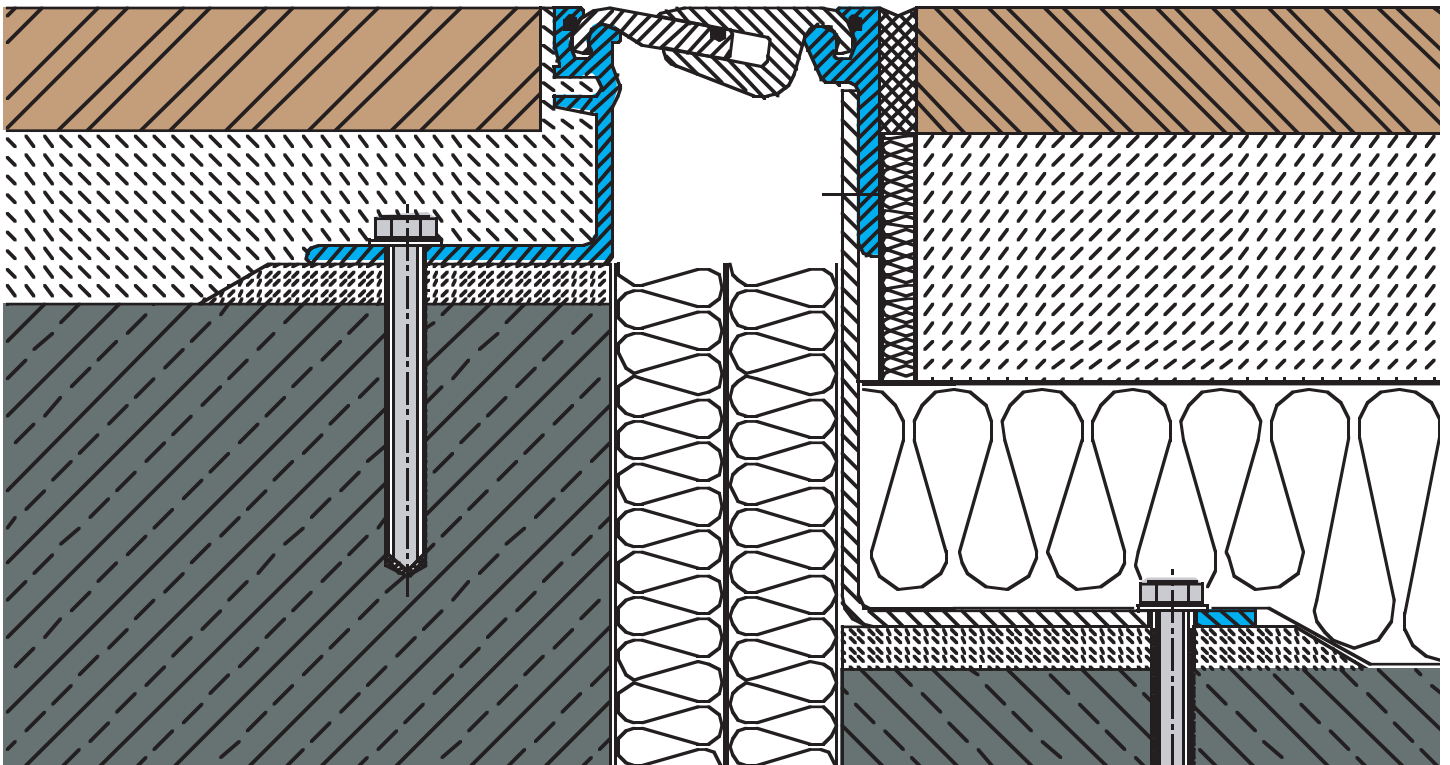
COMBINED EXPANSION JOINT SYSTEMS

MIGUTRANS

Example: Combined expansion joint profile FS 75/6200 with FS 75/2200



Example: Combined expansion joint profile FS 75/6200 with FS 75/15000

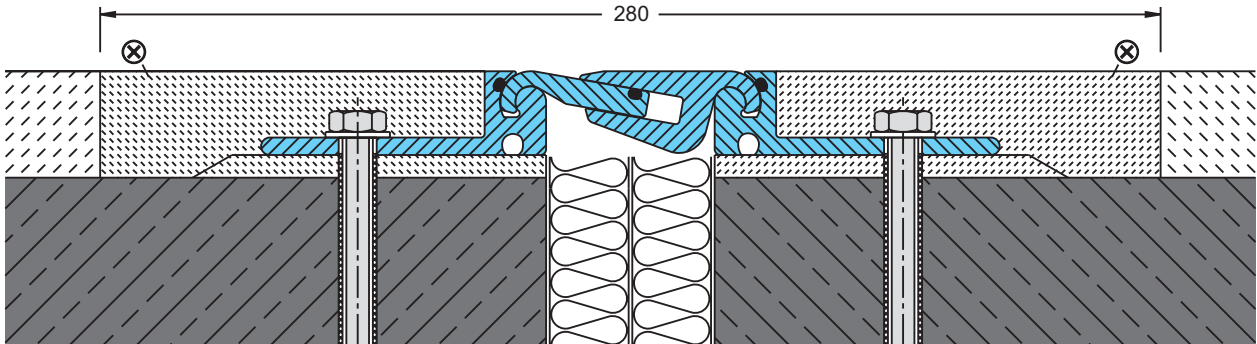


EXAMPLES FOR APPLICATION

EXPANSION JOINT SYSTEMS

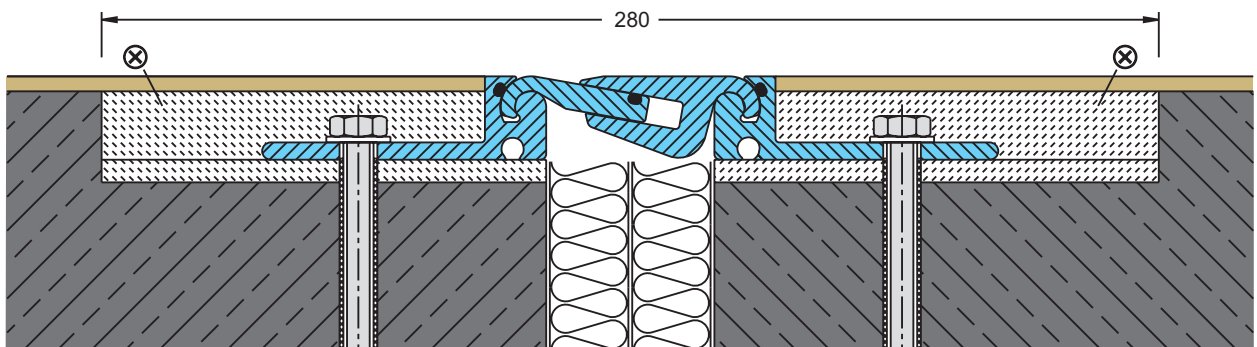
MIGUTRANS

Installation proposal: MIGUTRANS expansion joint profile e.g. in combination with magnesite floors
Profile: FS 75/2200



⊗ Epoxy

Installation proposal: MIGUTRANS expansion joint profile installed in existing block out
Profile: FS 75/2200



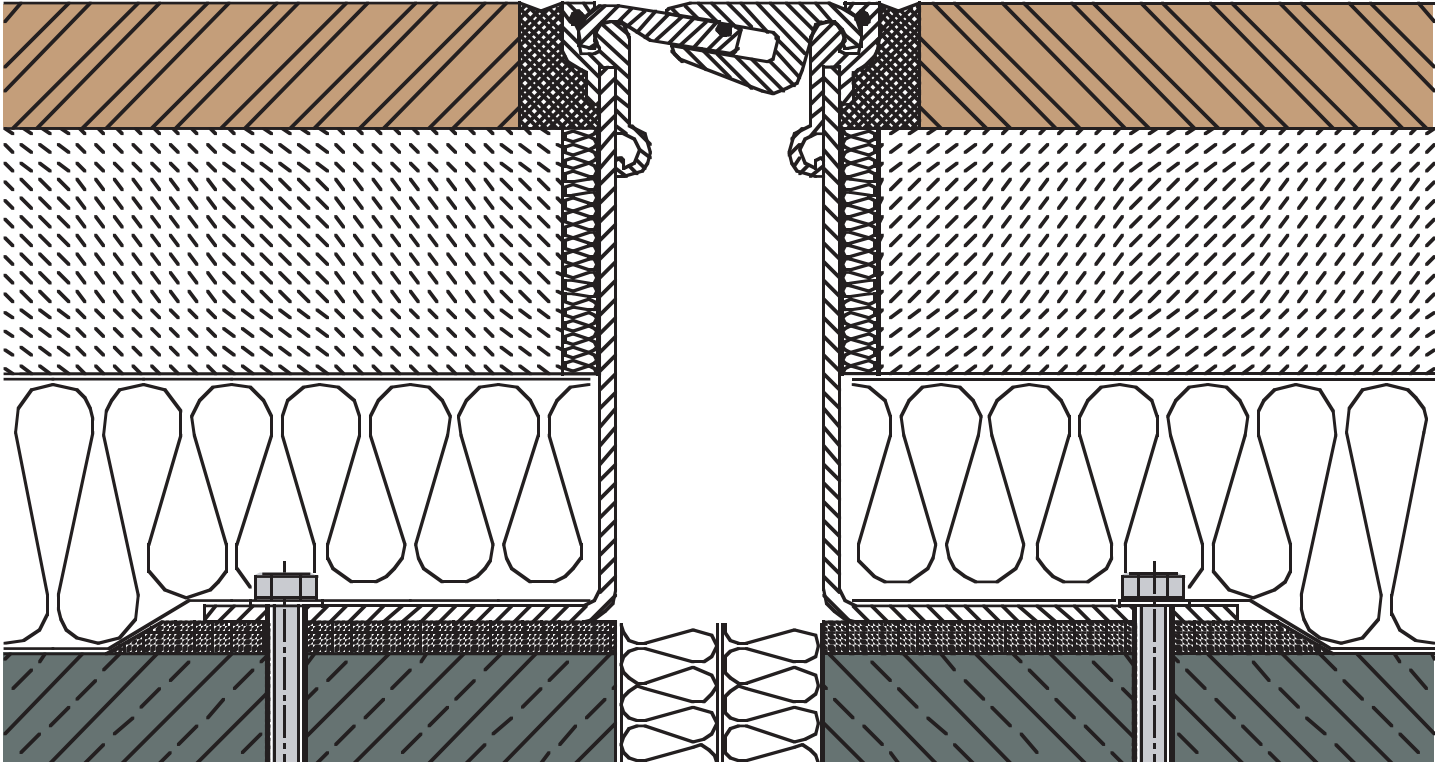
⊗ Epoxy

EXAMPLES FOR APPLICATION

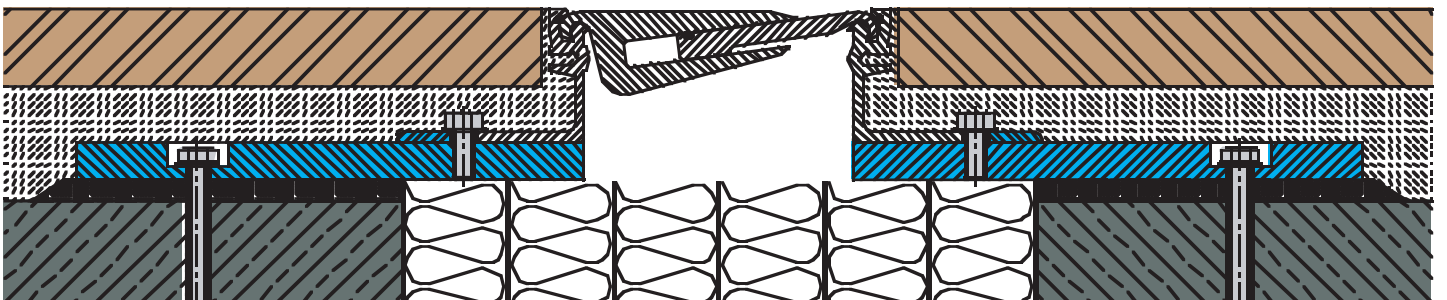
EXPANSION JOINT SYSTEMS

MIGUTRANS

Installation proposal: MIGUTRANS expansion joint profile for large installation heights



Installation proposal: MIGUTRANS expansion joint profile with supplied aluminium support plates for extremely wide expansion joints

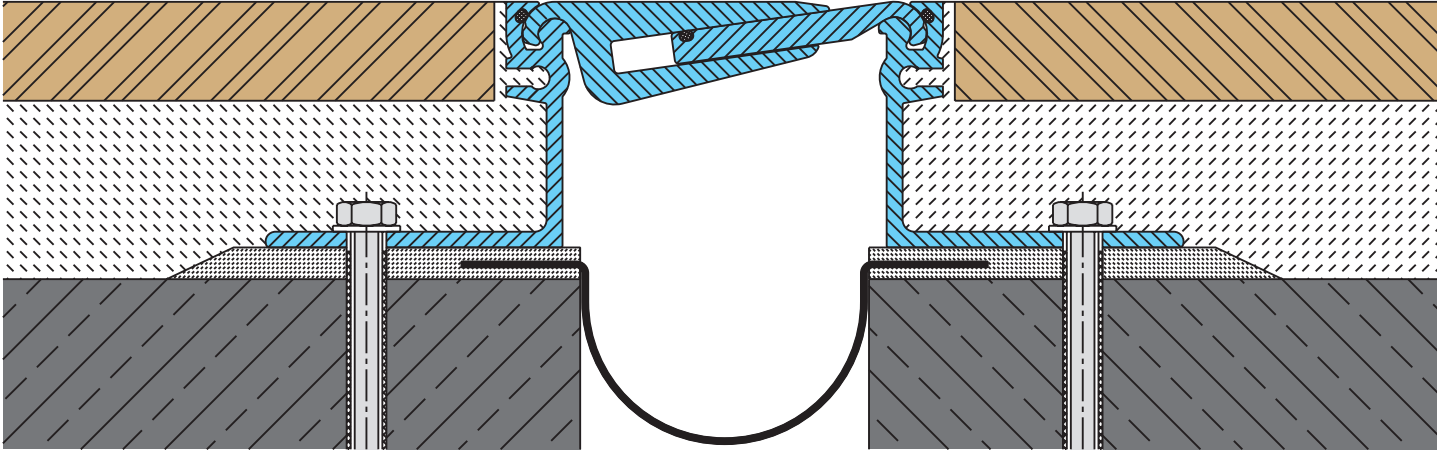


EXAMPLES FOR APPLICATION

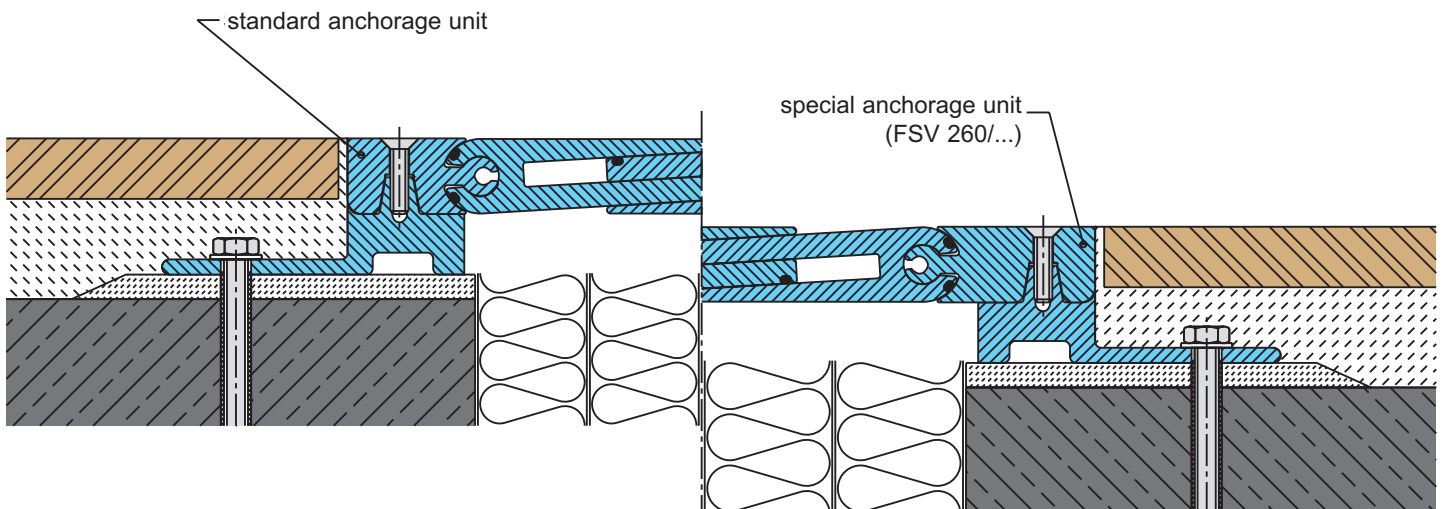
EXPANSION JOINT SYSTEMS

MIGUTRANS

Installation proposal: MIGUTRANS expansion joint profile with MIGUFOL-va pour barrier



Bridging unit of FSV 235/4500 replaceable at any time (screwed connection) – special anchorage unit for profile enlargement enlargement from 235 to 260 mm



PROFILE CONNECTIONS

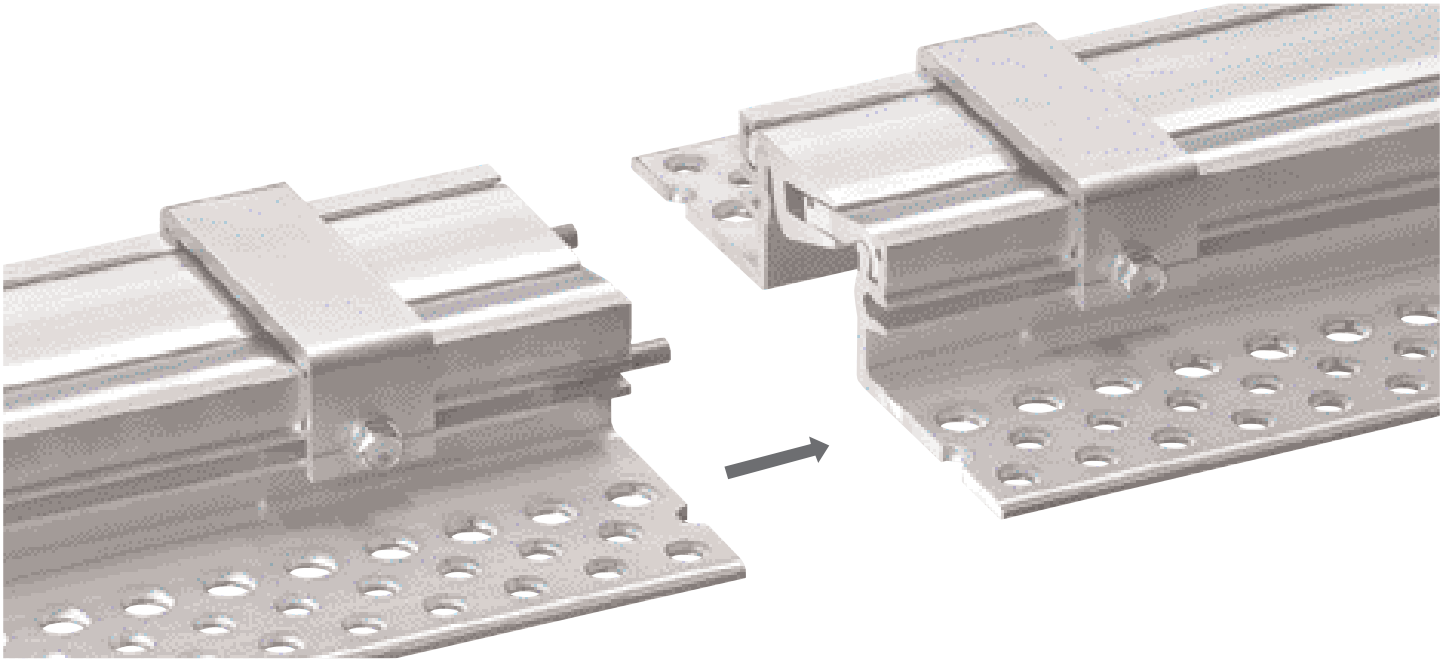
EXPANSION JOINT SYSTEMS

MIGUTRANS

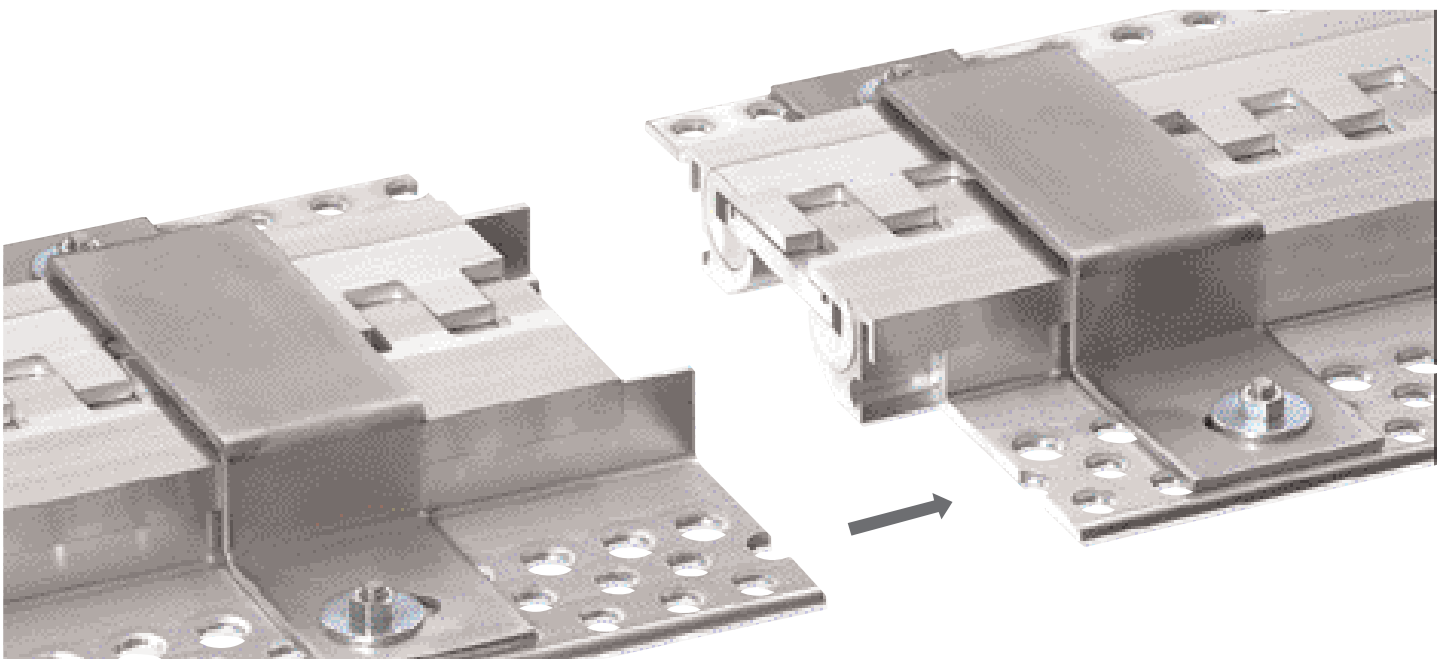
For the **one-piece anchorage units**, positive connection of the individual profile lengths is obtained by use of **slide-in connection pins**.

For a **two-piece anchorage unit**, this connection is obtained by **staggering the joints in the individual aluminium profiles**.

Example FS 75/4200 (one-piece anchorage units)



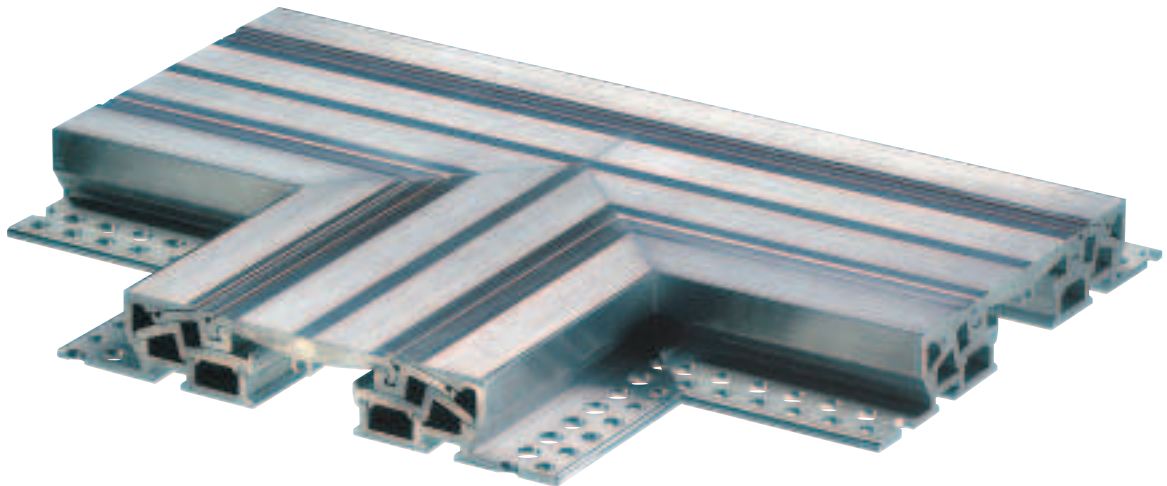
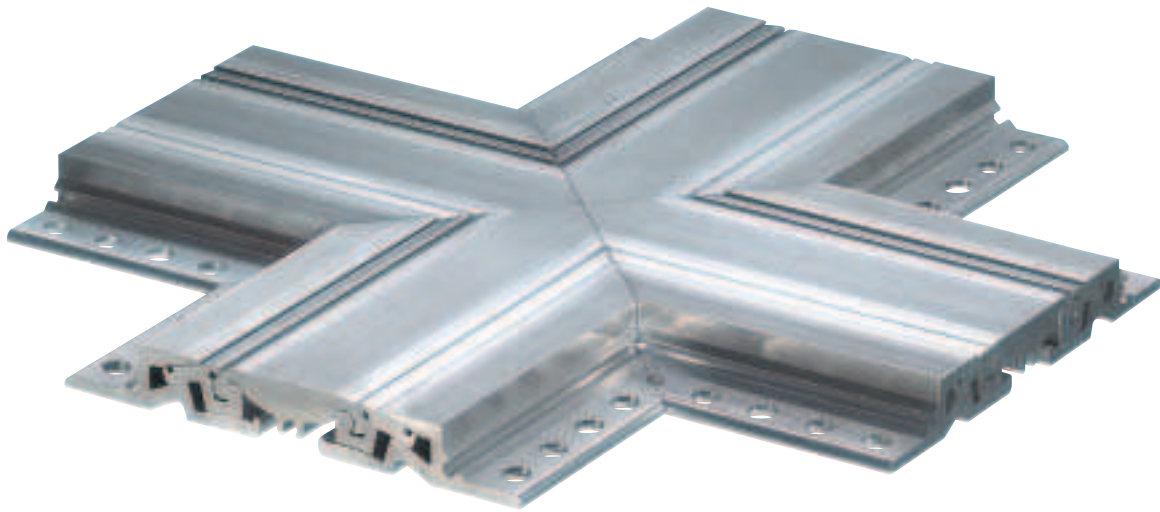
Example FS 100/3000 (two-piece anchorage units)



INTERSECTIONS

EXAMPLES

MIGUTRANS



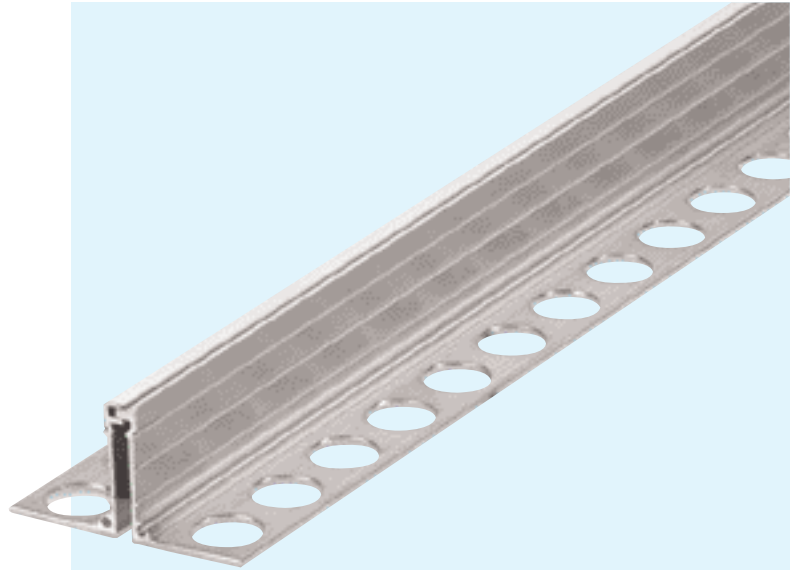
Additional intersections on request

SERIES ESF 10/... AL

FOR CONTRACTION JOINTS IN FLOORS WITH HIGH LOAD CAPACITY

MIGUTRANS

- **SOLID ALL METAL-PROFILE
(HARD WEARING, MAINTENANCE-FREE, LONG LASTING)**
- **INSTALLATION HEIGHT
FROM 15 MM UPWARDS**
- **SMALL VISIBLE SURFACE**



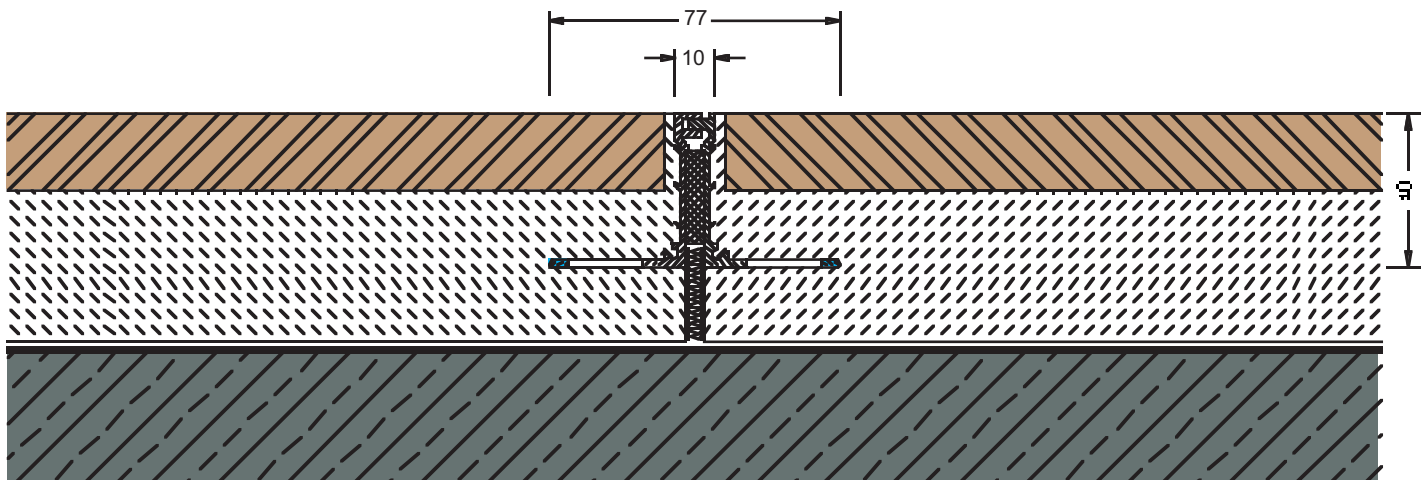
TECHNICAL DATA

Profile	Joint width max. mm	Total Movement mm	Visible Width of Profile mm	Total Width of Profile mm	Installation Height mm	Load capacity Lorries (DIN 1072) MP	Load capacity Fork lift trucks (DIN 1055) MP	Load capacity Solid plastic tyres kg/mm width of wheel
ESF 10/15 AL	10	4 ± 2	10	77	15	60	13	6,5
ESF 10/25 AL	10	4 ± 2	10	77	25	60	13	6,5
ESF 10/35 AL	10	4 ± 2	10	77	35	60	13	6,5
ESF 10/40 AL	10	4 ± 2	10	77	40	60	13	6,5
ESF 10/50 AL	10	4 ± 2	10	77	50	60	13	6,5
ESF 10/60 AL	10	4 ± 2	10	77	60	60	13	6,5

Material description, important notes and special properties = Page 2

Intersections = Page 31

Installation instruction = Page 32



ESF 10/40 AL

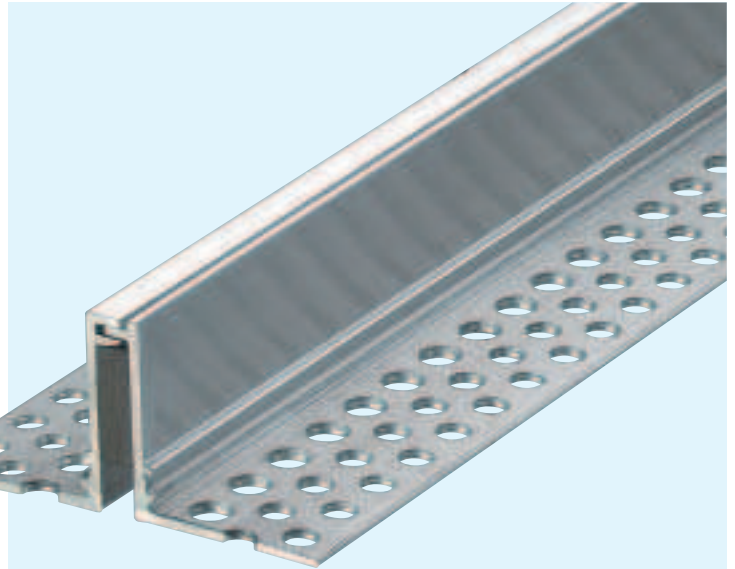
Scale 1 : 2

SERIES ESF 16/... AL

FOR CONTRACTION JOINTS IN FLOORS WITH HIGH LOAD CAPACITY

MIGUTRANS

- **SOLID ALL METAL-PROFILE
(HARD WEARING, MAINTENANCE-FREE, LONG LASTING)**
- **HIGH LOAD CAPACITY**
- **MOVEMENT CAPACITY 4 MM**



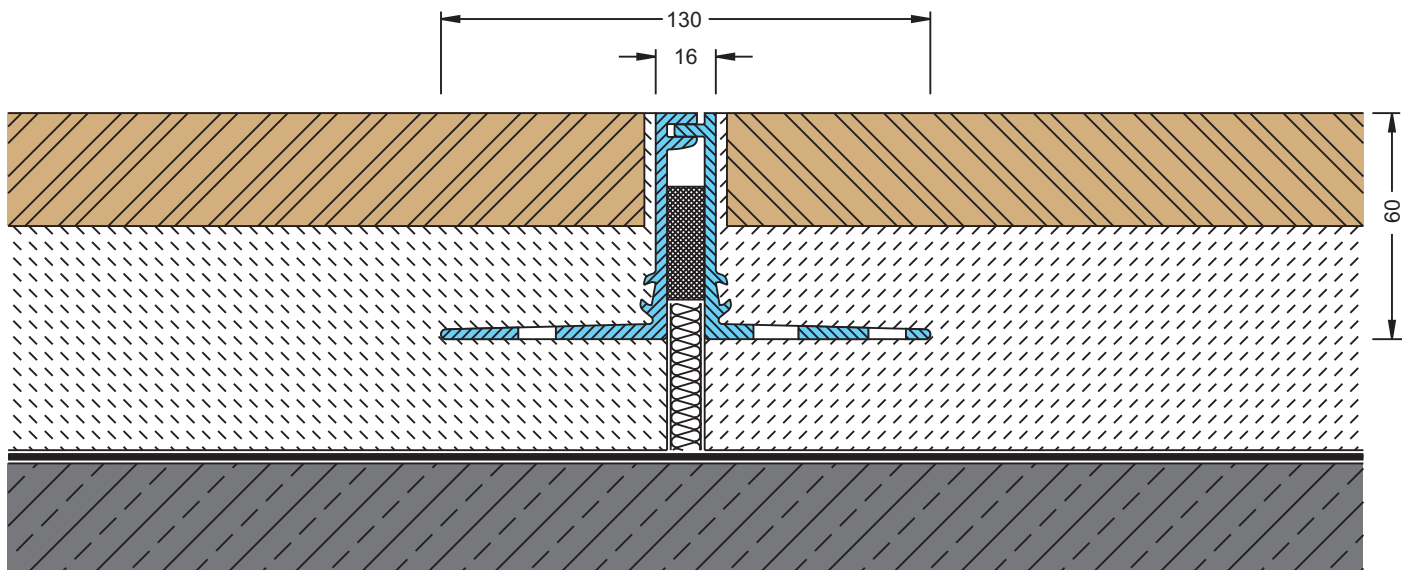
TECHNICAL DATA

Profile	Joint width max. mm	Total Movement mm	Visible Width of Profile mm	Total Width of Profile mm	Installation Height mm	Load capacity Lorries (DIN 1072) MP	Load capacity Fork lift trucks (DIN 1055) MP	Load capacity Solid plastic tyres kg/mm width of wheel
ESF 16/45 AL	10	4 ± 2	16	130	45	60	13	8
ESF 16/60 AL	10	4 ± 2	16	130	60	60	13	8

Material description, important notes and special properties = Page 2

Intersections = Page 31

Installation instruction = Page 32



ESF 16/60 AL

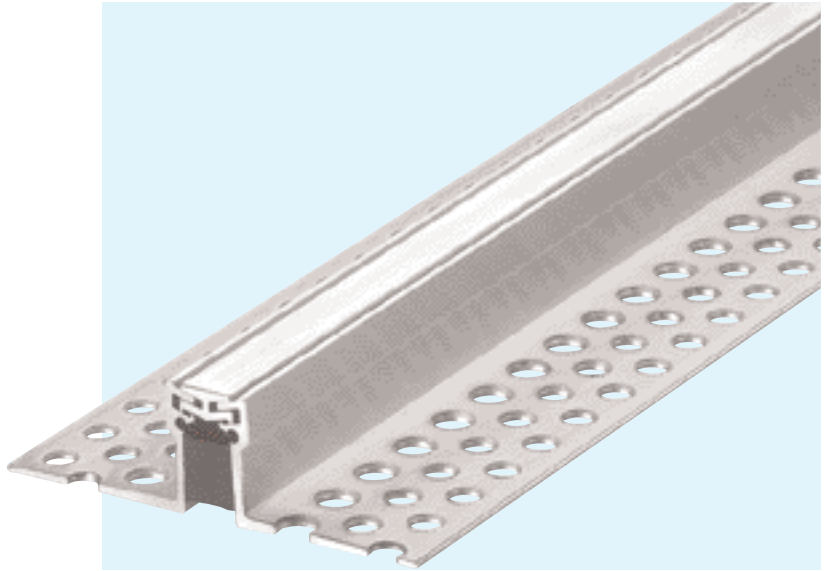
Scale 1 : 2

SERIES ESF 27/... AL

FOR CONTRACTION JOINTS IN FLOORS WITH HIGH LOAD CAPACITY

MIGUTRANS

- SOLID ALL METAL-PROFILE
(HARD WEARING, MAINTENANCE-FREE, LONG LASTING)
- HIGH LOAD CAPACITY
- MOVEMENT CAPACITY 10 MM



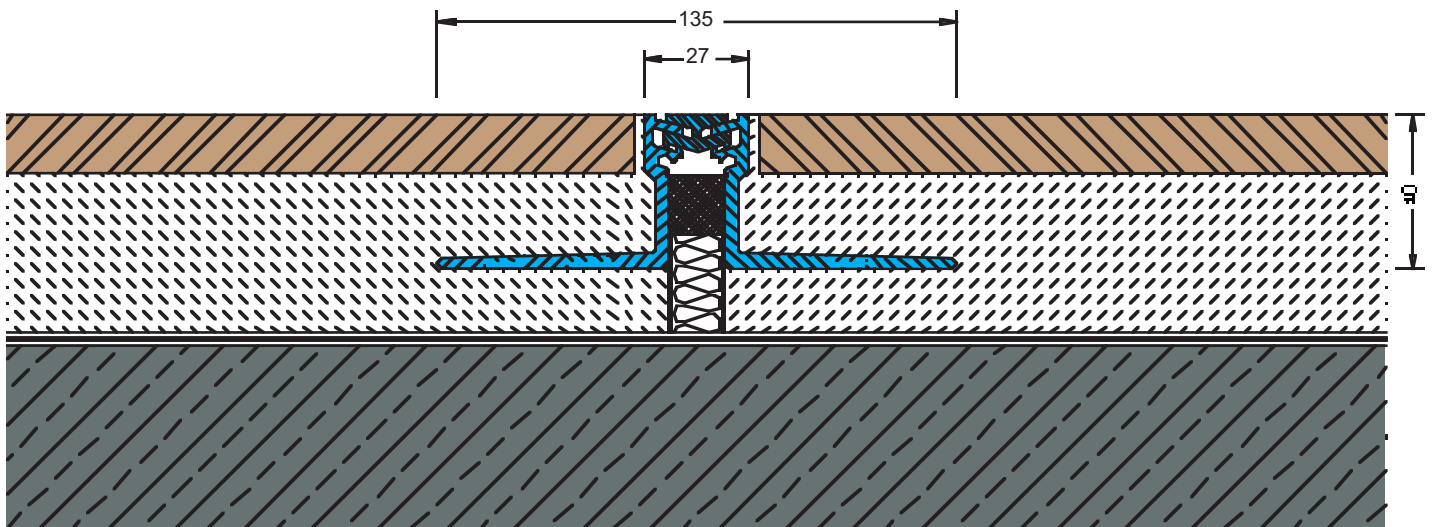
TECHNICAL DATA

Profile	Joint width max. mm	Total Movement mm	Visible Width of Profile mm	Total Width of Profile mm	Installation Height mm	Load capacity Lorries (DIN 1072) MP	Load capacity Fork lift trucks (DIN 1055) MP	Load capacity Solid plastic tyres kg/mm width of wheel
ESF 27/40 AL	15	10 ± 5	27	135	40	60	13	8
ESF 27/55 AL	15	10 ± 5	27	135	55	60	13	8

Material description, important notes and special properties = Page 2

Intersections = Page 31

Installation instruction = Page 32



ESF 27/40 AL

Scale 1 : 2

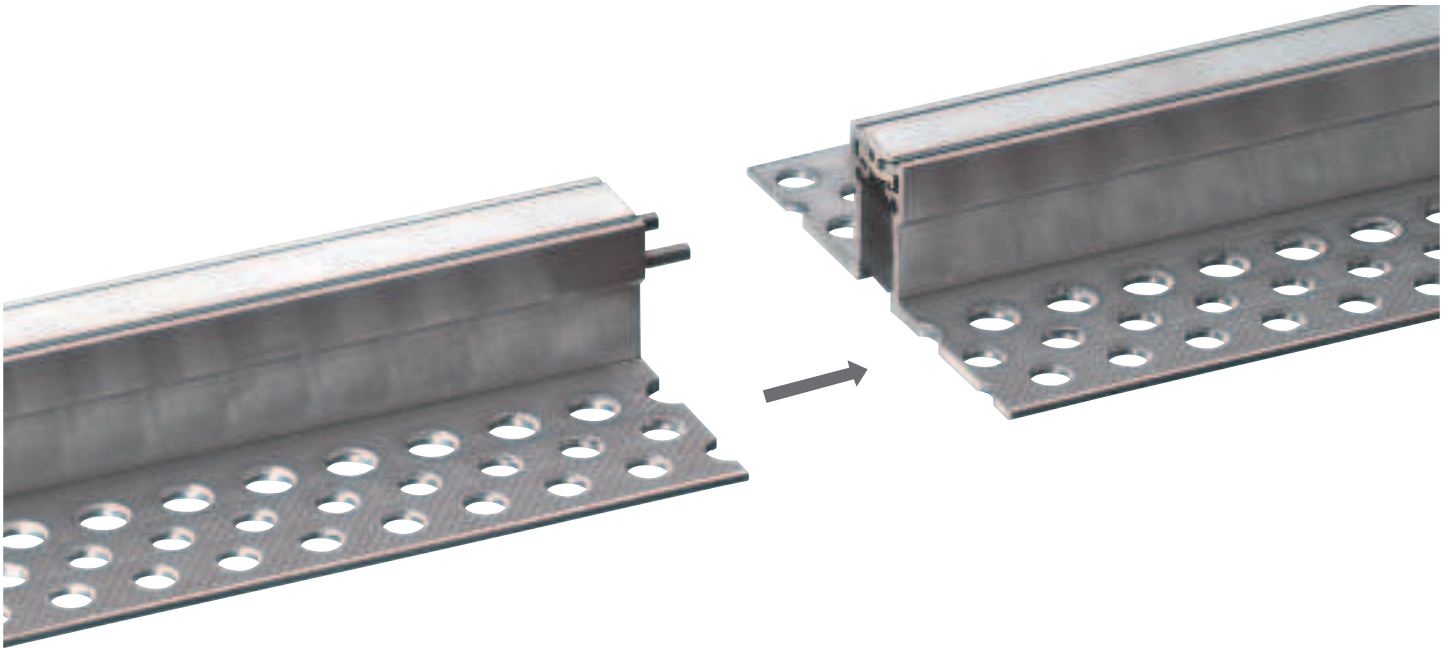
PROFILE CONNECTIONS

CONTRACTION JOINT SYSTEMS

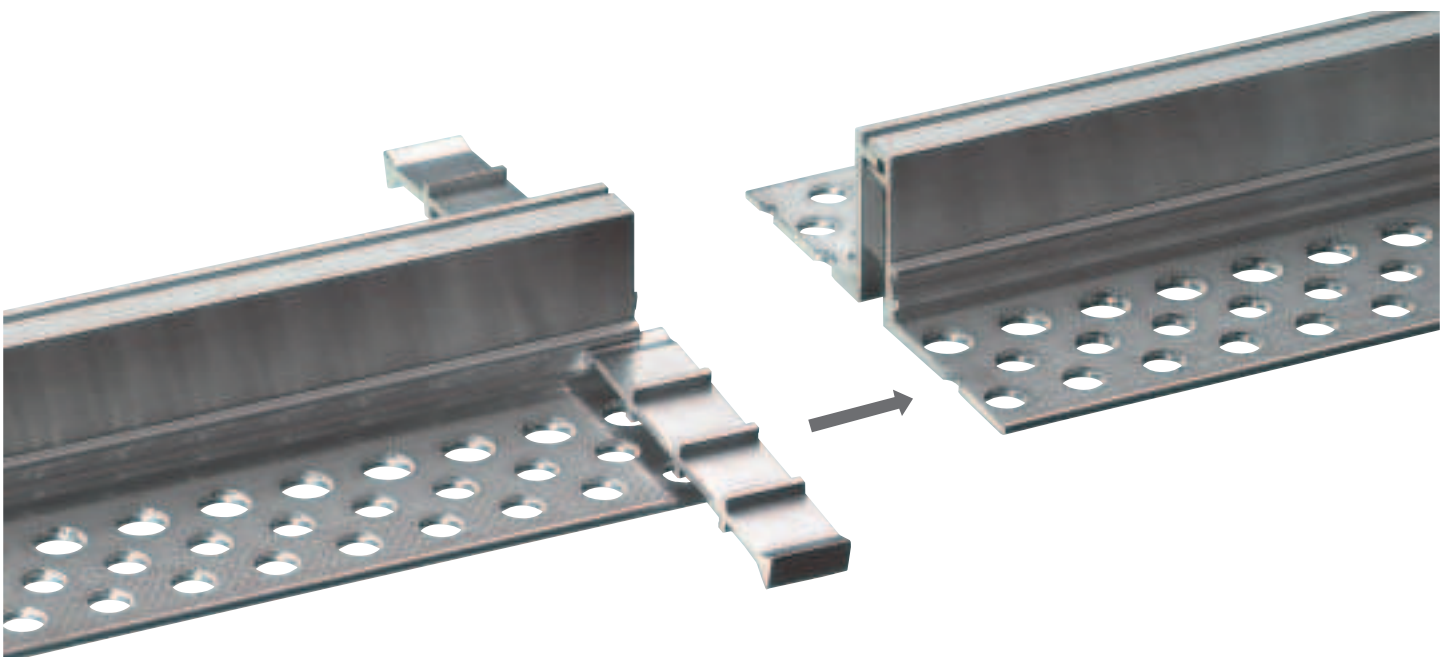
MIGUTRANS

The positive connection of the individual profile lengths is obtained by use of **slide-in connection pins**. (Series ESF 10/... and ESF 27/...) or by **staggering in slide-in anchors** in the individual aluminium profiles (Series ESF 16/...).

Example ESF 27/40 AL



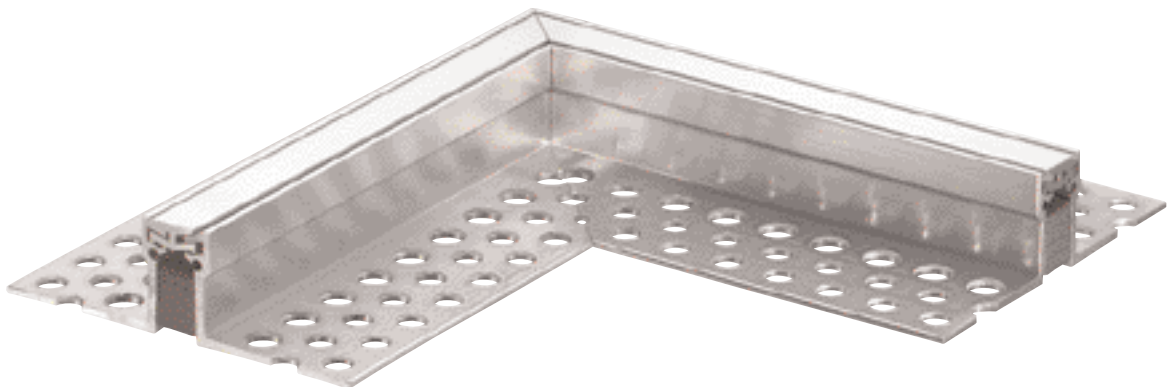
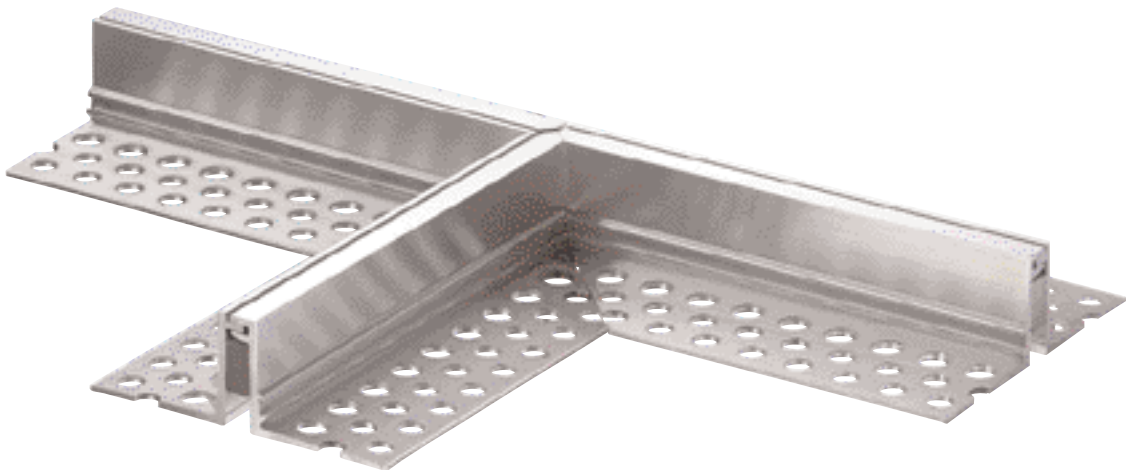
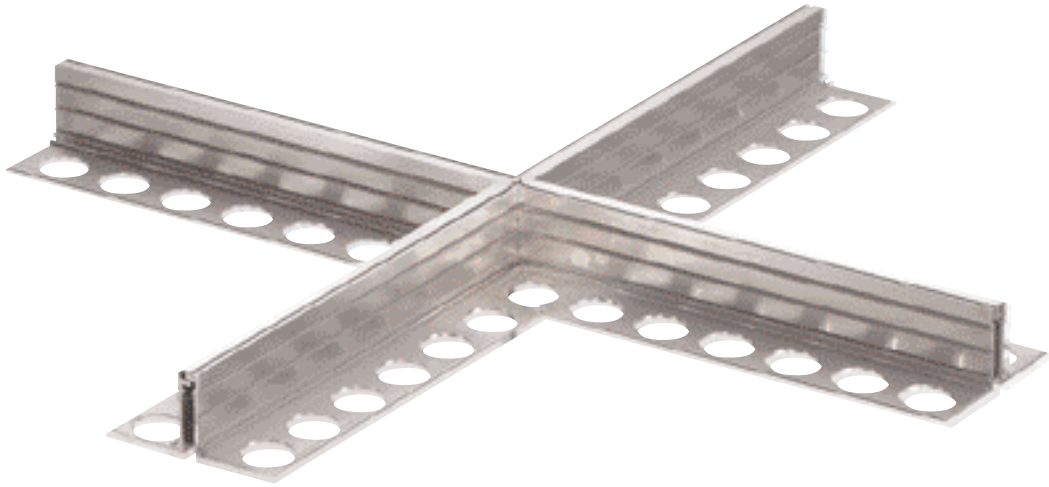
Example ESF 16/45 AL



INTERSECTIONS

EXAMPLES

MIGUTRANS



Additional intersections on request

INSTALLATION INSTRUCTION

EXPANSION JOINT SYSTEMS

MIGUTRANS

The profile will only full fill its function if it has been selected correctly, installed perfectly and if the joint width, joint movement and expected load have been considered.

To compensate for unevenness in the sub-base, an epoxy strip (approx. 100 mm wide) must be laid on the sub-base on both sides of the joint. Place the profile into the epoxy whilst still wet and tap gently into place until the desired level is achieved. Care must be taken that the mounting brackets are fully embedded and that there is no hollow space between them and the sub-base.

To achieve the requested resistance to pressure and a positive bond to the building, its is strictly necessary to use epoxy mortar for the bed beneath the perforated mounting bracket.

After the epoxy has hardened, the mounting brackets of the profile are to be fixed to the sub-base with suitable chemical anchors e.g. UPAT UKA 3M8. Care must be taken that the profile is absolutely straight, so that the screed, tiles or sheet flooring material will be perfectly flush with the edge of the profiles. Fixings are made at distances of approx. 350 mm.

The profiles are adjusted to the mid-point width by means of distance pieces in our works. The visible surface of the profiles is protected by adhesive tapes.

For the *one-piece anchorage units*, **positive connection** of the individual profile lengths is obtained by use of *slide-in connection pins*.

A *two-piece anchorage unit*, this connection is obtained by *staggering the joints in the individual aluminium profiles*. (See page 25)

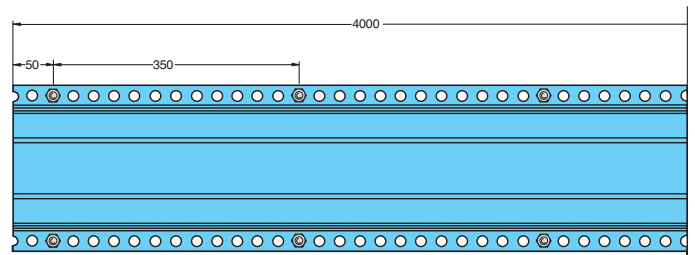
If the profiles are installed in magnesite floors, those parts of the aluminium in contact with the magnesite must be protected by painting with for instance bitumen-epoxy-paint.

The same protection is necessary in areas where moisture is to be expected.

After having fixed the aluminium mounting brackets to the sub-base, the distance pieces must be removed.

Due to the asymmetric design of the visible parts of the profiles of series FS 50/..., FS 75/..., FS 110/..., FS 130/..., FS 160/..., FS 155/..., FS 185/... and FSV 235/..., it is essential that these profiles are installed with the same orientation.

(The profiles are marked by appropriate labels in our works for that purpose). Furthermore, it is important that the butt joints of the individual lengths are executed perfectly to obtain a satisfactory appearance.



Distance of fixing

INSTALLATION INSTRUCTION

CONTRACTION JOINT SYSTEMS

A joint filler strip must be placed between the aluminium mounting brackets. This joint filler is not included in our delivery. Series ESF 10/... = 5 mm, Series ESF 16/... = 10 mm, Series ESF 27/... = 15 mm joint filler.

The height of the joint filler depends on the overall height required, but it must be sufficient to ensure that the screed

completely separated at the joint locations.

Before installing the profiles, it has to be insured, that the mounting brackets are absolutely clean and grease/oil free. The perforated legs of the profile are pressed into the first fresh layer of mortar or screed and levelled.

Then more screed has to be applied.



WIR ZEIGEN PROFIL ZU IHRER SICHERHEIT

MIGUA

EXPANSION JOINT SYSTEMS

MIGUTAN

WATERTIGHT EXPANSION JOINT SYSTEMS

MIGUTRANS

HEAVY DUTY EXPANSION JOINT SYSTEMS

MIGUPREN

WATERTIGHT CORRUGATED JOINT SYSTEMS FOR FLAT ROOFS

MIGUA®



MIGUA FUGENSYSTEME GMBH & CO. KG
P.O.BOX 1260, D-42479 WÜLFRATH
DIESELSTRASSE 20, D-42489 WÜLFRATH
PHONE +49 (0)20 58 / 774-0, FAX +49 (0)20 58 / 774-48
EMAIL info@migua.de, INTERNET www.migua.de

MIGUA®