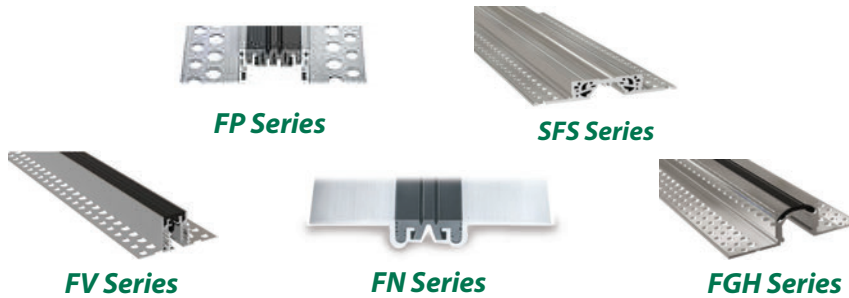


Interior Products

EMSEAL offers superior products for interior floors, walls and ceilings to suit a variety of conditions and aesthetic requirements. They are designed and constructed with the highest quality materials and are matched specifically for each installation application. Additional configurations and heights are available (*consult EMSEAL*). For a complete listing and CAD details of interior joint solutions please visit www.emseal.com.

Interior Floor Joints

MIGUTRANS FSFS Series features heavy duty interlocking all-metal profiles for heavy point loads while the **Migutec FP Series**, **FGH Series** and **FV Series** are designed to bridge various width joint gaps utilizing a robust rubber sealing insert. Also available are **FN Series** in surface mount versions.



SPJ Series is made up of modular sections designed to handle seismic conditions. The **Twinsert Series**, is designed for joints sized to seismic conditions and provide solutions for extremely large joint gaps by permitting the insertion of the flooring materials as an inlay between rubber seals or metal inserts.



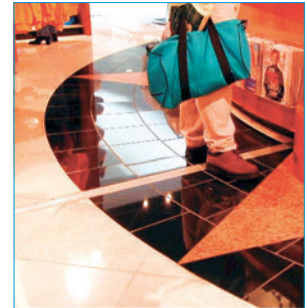
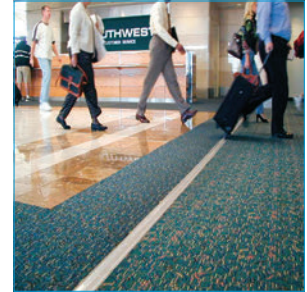
Interior Wall (and Ceiling) Joints

The wall (and ceiling) selections include easy to install snap-cover all-metal versions such as the **KF Series** featuring rapid spring-anchor fastening in a variety of joint sizes as well as the **FN Series** composed of metal and elastomeric covers.



▼ Fire-Rating Interior Joints

Interior floor or wall expansion joints can be fire-rated when an Emshield UL-certified expansion joint is combined with another interior product. While Emshield expansion joints (WFR, SSW, DFR, SSF) are usually installed as a single expansion joint system, they can be placed in combination to create a dual assembly. The surface product should be backed in the expansion gap with an appropriate fire-rated Emshield foam product. Emshield **DFR** (pg. 18) can be placed under the following floor-mounted surface product series: **FP, FN, FV, FGH,** and **SFS**. The same holds true in walls where Emshield **WFR** (pg. 14) can be placed behind **FN** or **KF** series expansion joints. *Consult EMSEAL for further information.*



Standard CAD details are available online at www.emseal.com. For application specific CAD details contact EMSEAL directly.

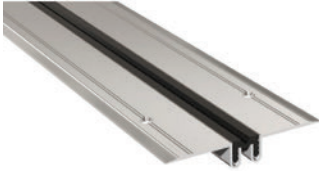
EMSEAL JOINT SYSTEMS, LTD 25 Bridle Lane, Westborough, MA 01581 USA
EMSEAL, LLC 111 Royal Group Crescent, Woodbridge, ON L4H 1X9 Canada

PH: 508-836-0280
PH: 416-740-2090

FX: 508-836-0281
FX: 416-740-0233



A SIKA COMPANY



Migutec FN 20/12

Joint sizes:
3/4" – 1 1/4" (20 – 30mm)
Movement:
3/16" = + 1/8", -1/16"
(5mm = +3mm, -2mm)

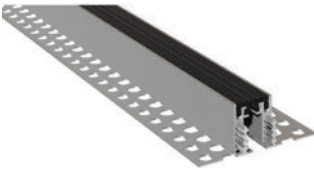
Floors / Walls / Ceilings
Alum/rubber
Surface mount
Standard load rating



Migutec FN 35/15

Joint sizes:
1 3/8" – 1 7/8" (35 – 48mm)
Movement:
3/8" = + 3/16", -3/16"
(10mm = +5mm, -5mm)

Floors / Walls / Ceilings
Alum/elastomeric
Surface mount
Standard load rating



Migutec FV 35/35

Joint sizes:
3/16" – 1 1/4" (5 – 32mm)
Movement:
3/8" = + 3/16", -3/16"
(10mm = +5mm, -5mm)

Floors
Alum/elastomeric
Recess mount
Standard load rating



Migutec FN 50/20

Joint sizes:
2" – 2 1/2" (50 – 65mm)
Movement:
5/8" = + 5/16", -5/16"
(16mm = +8mm, -8mm)

Floors / Walls / Ceilings
Alum/elastomeric
Surface mount
Standard load rating

EMSEAL offers an extended range of products. For more detailed information and drawings on any products please visit www.emseal.com. For additional products and sizes please contact EMSEAL directly.

Standard CAD details are available online at www.emseal.com. For application specific CAD details contact EMSEAL directly.

EMSEAL JOINT SYSTEMS, LTD 25 Bridle Lane, Westborough, MA 01581 USA
EMSEAL, LLC 111 Royal Group Crescent, Woodbridge, ON L4H 1X9 Canada

PH: 508-836-0280
PH: 416-740-2090

FX: 508-836-0281
FX: 416-740-0233



A SIKA COMPANY



Migutec FP 55/35

Joint sizes:
1/2" – 2" (13 - 50mm)
Movement:
5/8" = + 5/16", -5/16"
(16mm = +8mm, -8mm)

Floors
Alum/elastomeric
Recessed mount
Standard load rating



Migutec FGH 65/30

Joint sizes:
13/16" – 2" (20 - 50mm)
Movement:
3/4" = + 3/8", -3/8"
(20mm = +10mm, -10mm)

Floors
Alum/rubber
Recessed mount
Standard load rating



Migutrans SFS 90/115/135

Joint sizes:
3/8" – 4" (10 - 100mm)
Movement:
SFS 90 3/4" = + 3/8", -3/8"
(20mm = +10mm, -10mm)
SFS 115 1 1/4" = + 9/16", -9/16"
(30mm = +15mm, -15mm)
SFS 135 1 1/2" = + 3/4", -3/4"
(40mm = +20mm, -20mm)

Floors
Solid Aluminum
Recess mount
Heavy load rating

EMSEAL offers an extended range of products. For more detailed information and drawings on any products please visit www.emseal.com. For additional products and sizes please contact EMSEAL directly.

Standard CAD details are available online at www.emseal.com. For application specific CAD details contact EMSEAL directly.

EMSEAL JOINT SYSTEMS, LTD 25 Bridle Lane, Westborough, MA 01581 USA
EMSEAL, LLC 111 Royal Group Crescent, Woodbridge, ON L4H 1X9 Canada

PH: 508-836-0280 FX: 508-836-0281
PH: 416-740-2090 FX: 416-740-0233



A SIKA COMPANY



Migutec KF 250 / KFE 251

Joint sizes:
1/2" – 3 1/4" (13 - 80mm)

Walls / Ceilings
Solid Aluminum
Surface mount



Migumax SPJ 200

Joint sizes:
Up to 8" (200mm)
Movement:
Thermal: 1 1/2" = + 3/4", -3/4"
(40mm = +20mm, -20mm)
Seismic: 11 1/4" = + 6", -5 1/4"
(285mm = +150mm, -135mm)

Floors
Aluminum
Surface mount
Standard load rating



Twinsert Series

Joint sizes:
Up to 24" (825mm)
Movement:
Various

Floors
Solid Aluminum
Extra Heavy loading



QuickCover

Joint sizes:
1" – 4" (25 – 100mm)
Movement:
Up to 100% (+50%, -50%)

Floors
Precompressed
Anchorless
Rapid Installation



QuietJoint

Joint sizes:
1" – 6" (25 - 150mm)

Walls and Windows
Mass-loaded acoustic seal / Insulating
Fire-resistant / Sound Attenuating
Non-mechanical and non-metallic

EMSEAL offers an extended range of products. For more detailed information and drawings on any products please visit www.emseal.com. For additional products and sizes please contact EMSEAL directly.

Standard CAD details are available online at www.emseal.com. For application specific CAD details contact EMSEAL directly.

EMSEAL JOINT SYSTEMS, LTD 25 Bridle Lane, Westborough, MA 01581 USA
EMSEAL, LLC 111 Royal Group Crescent, Woodbridge, ON L4H 1X9 Canada

PH: 508-836-0280
PH: 416-740-2090

FX: 508-836-0281
FX: 416-740-0233



A SIKA COMPANY