



A SIKA COMPANY

# PRODUCT DATA Migutan FP 110

**Watertight, Plaza Deck, & Split Slab Expansion Joint**

(Previously **FP 90**, name changed as part of metric standardization program)

## Product Description

- **Migutan** (mig-yoo-tan) consists of heavy-duty extruded aluminum retainer rails, synthetic rubber side flashing sheets, a thermo-plastic rubber sealing insert, and stainless-steel retainer caps.
- The rails are bolted to the structural slab, the flashing sheets are integrated in a sandwich with the deck waterproofing system.
- The sealing insert is installed over the upper end of the flashing sheets and is held in compression by the stainless-steel retainer caps.
- The net result is a system that integrates the structural slab, deck waterproofing and expansion joint system which is essentially independent of the wear-course components (ex: pavers, asphalt topping, concrete topping, etc.) while ensuring that movement is properly accommodated.

## Uses and Applications

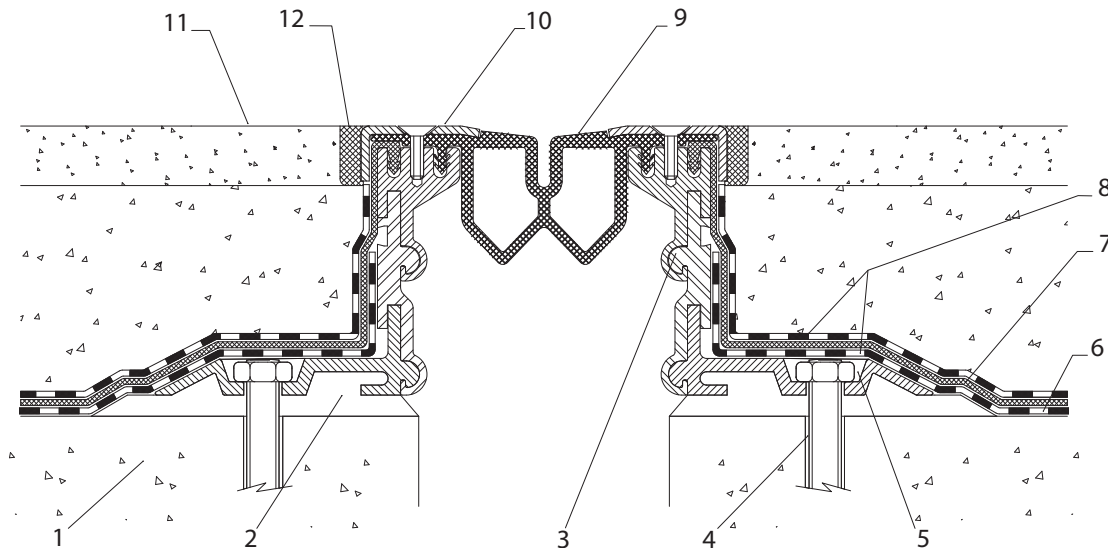
- Plaza Decks
- Split-Slab Parking Decks
- Roof Decks
- Below-Grade Deck and Wall Joints

## Load Capacity

**Plaza and Parking Decks:** FP 110/45 - FP 110/115: Suitable for slow moving vehicles with pneumatic tires such as cars and light trucks up to 16,860 lb.wt. (75 kN) gross.

**Ramps, Loading Docks or other Decks with Continuous Heavy-Duty (Truck, Bus) Vehicular Traffic:** Use steel legs — Consult EMSEAL.

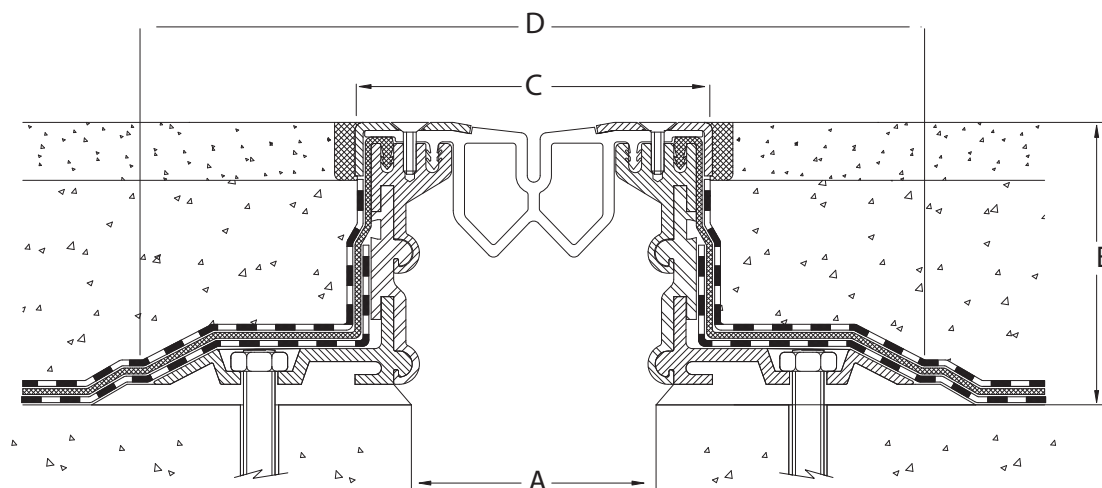
## System Features (in order of installation)



### Key to system features

- |  |  |   |
|--|--|---|
| 1. Structural slab   | no stress on concrete joint-edge (note: FP 110/25 uses counter-sink-head expansion anchor.)  | 9. Heat-weldable, sealing gland allows for watertight heat-welded transitions in direction and plane                                |
| 2. Epoxy levelling bed ensures that retainer legs are fully supported while acting as a dielectric separator   | 5. Level-filled anchor channels protect waterproofing from damage  | 10. Stainless-steel retaining caps and machine-screws clamp sealing gland and flashing sheet and are removable for seal maintenance |
| 3. Two or three piece interlocked retainer legs are free to slide relative to each other to provide positive interlocking of successive joint lengths. (Note: solid-leg FP 110/6000s & FP 110/25 interlocked by means of stainless-steel connector pins) | 6. Deck waterproofing is installed across deck and up migutan retainer leg   | 11. Pavers, asphalt, fill, or other wear-surface  |
| 4. 5/16" x 4" (8mm x 100mm) epoxy anchors at 12-Inch (300mm) centers ensure secure fastening while placing   | 7. Heat-weldable, high-nitrile pvc side flashing sheets are fully embedded in, welded to or adhered to upper surface of primary deck waterproofing | 12. Self-levelling, traffic-grade sealant control joint (as needed to suit application — consult EMSEAL)                            |
|  | 8. Overlay and deck membranes encapsulate migutan flashing sheet in watertight sandwich  |   |

## Selection Guide



Model No.	A For Mean Temp. Joint Size of up to width of A.	A Total Movement Capability (over total expected temp. ° range)	C Exposed Width (at mid-point of movement range)	D Overall Width (At mid-point of movement range)	E Height
For transitions to the vertical plane, below-grade joints, and parking decks with normal car traffic and occasional truck/bus traffic:					
FP 110/25	2.63" (65mm)	2.00" (50mm)	4.33" (110mm)	9.05" (230mm)	0.98" (25mm)
For split-slab parking and plaza decks with normal car traffic and occasional truck/bus traffic:					
FP 110/45	3.00" (76mm)	2.36" (60mm)	4.33" (110mm)	9.33" (237mm)	1.81" (46mm)
FP 110/60					2.44" (62mm)
FP 110/80					3.19" (81mm)
FP 110/95					3.81" (97mm)
FP 110/115					4.61" (117mm)
For non-vehicular-traffic plaza decks. Extra-high leg heights accommodate thick overlay systems and topping slabs. These models are supplied with extra-long (double-width) side sheets to ensure poper integration with deck waterproofing.					
FP 110/130	3.00" (76mm)	2.36" (60mm)	4.33" (110mm)	9.33" (237mm)	5.12" (117mm)
FP 110/150					5.90" (150mm)
FP 110/165					6.57" (167mm)
FP 110/185					7.36" (187mm)
FP 110/200					7.95" (202mm)
FP 110/200					8.74" (222mm)
FP 110/235					9.33" (237mm)
FP 110/255					10.12" (257mm)
FP 110/270					10.71" (272mm)
FP 110/2110					11.49" (292mm)
FP 110/305					12.09" (307mm)

Note: steel legs are now available for increased loading capacity for all leg heights: contact EMSEAL.

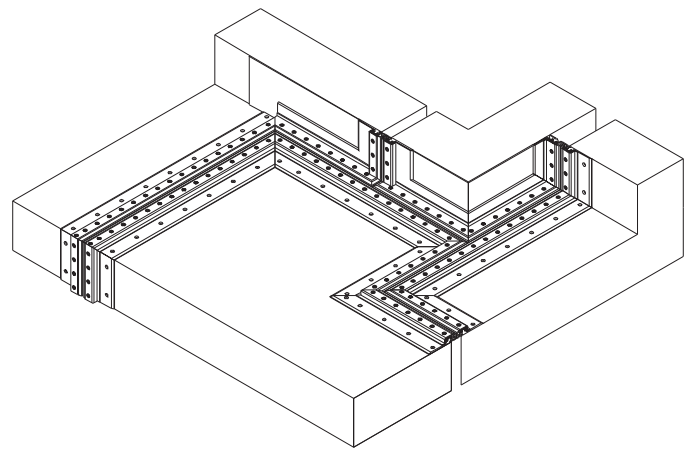
Production length of metal parts: 13.12 LF (4 meters).

Side flashing sheets available in rolls up to 65.6 LF (20 meters).

Sealing gland available in continuous lengths practicable to shipping and to suit job — Consult EMSEAL.

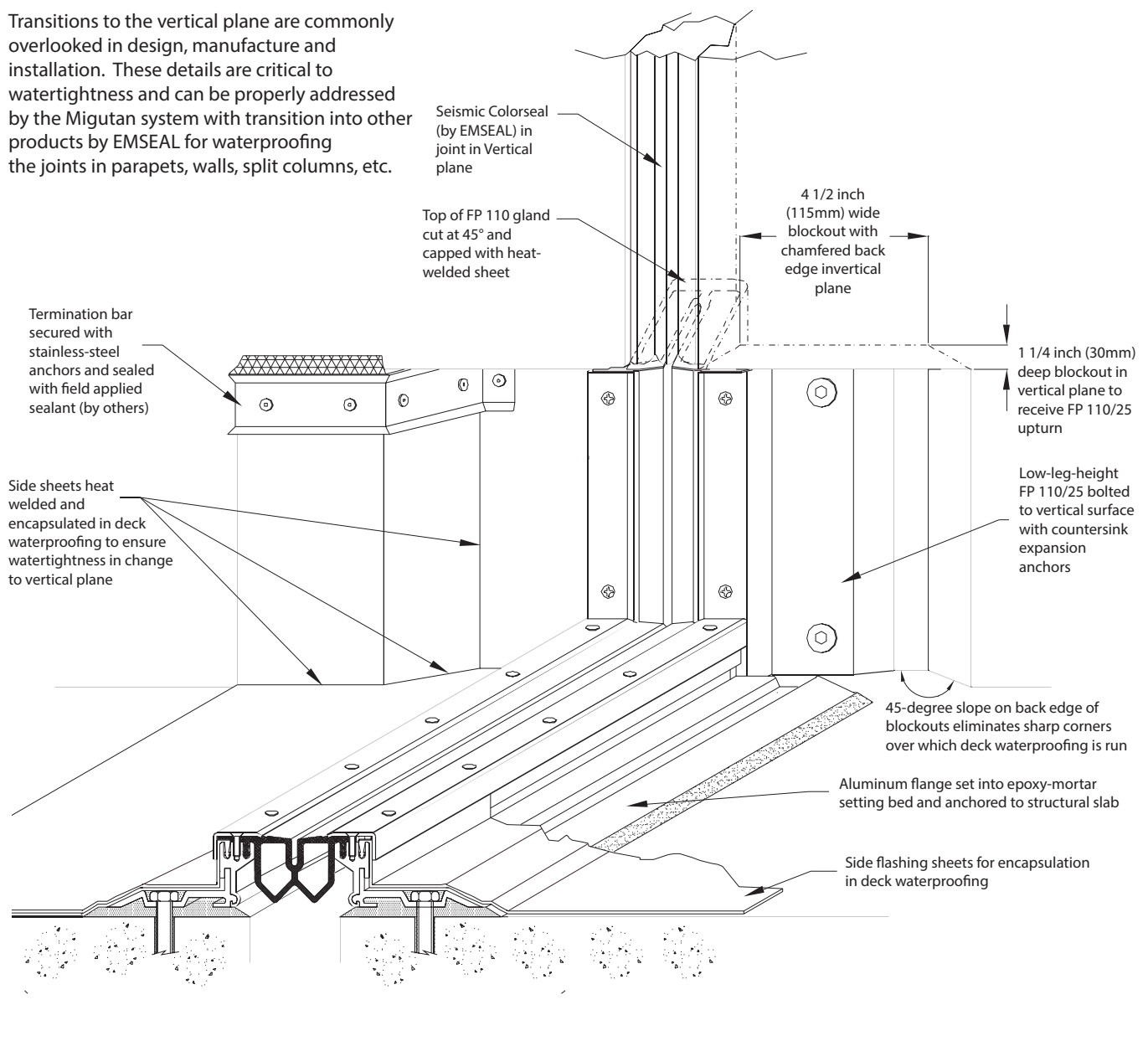
## Watertight Transitions & Terminations

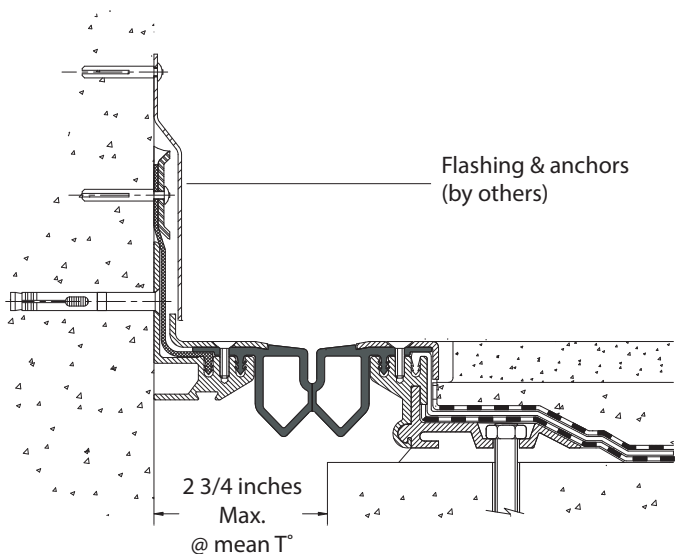
Factory-heat-welded thermoplastic-rubber sealing insert and heat-weldable side sheets as well as factory-welded aluminum components assure watertightness through transitions and terminations. Virtually any kind of transition is both possible and practical.



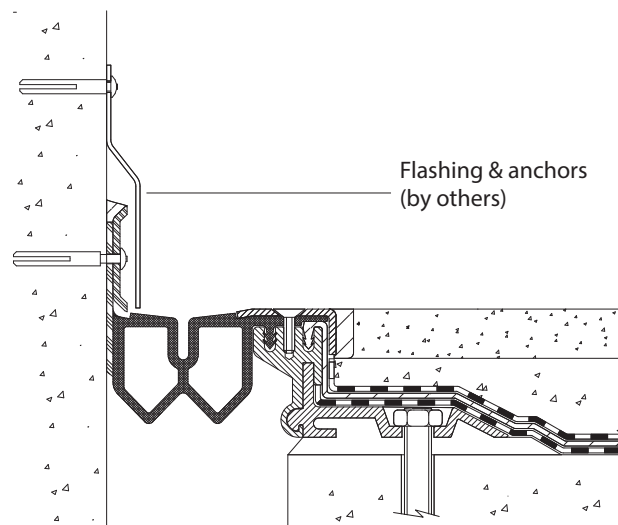
### Transitions From Horizontal to Vertical Planes

Transitions to the vertical plane are commonly overlooked in design, manufacture and installation. These details are critical to watertightness and can be properly addressed by the Migutan system with transition into other products by EMSEAL for waterproofing the joints in parapets, walls, split columns, etc.

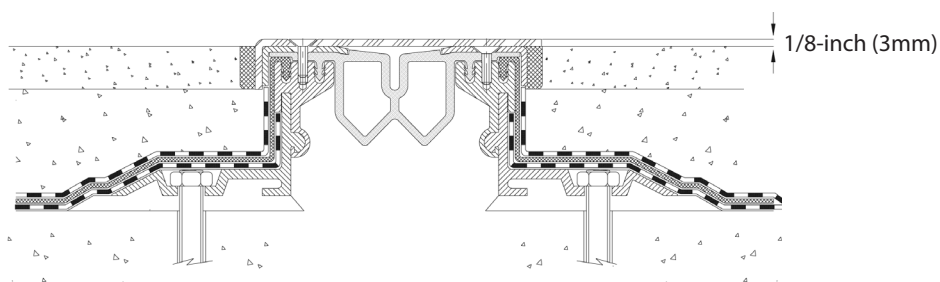


**E-2 & E-8 Deck-to-Wall Options (available for all models)**

NOTE: Use E-2 where continuous runs of deck-to-wall joint are uninterrupted by columns or other elements adjacent to the run of the joint.



NOTE: Use E-8 where joint-gap alternates from deck-to-deck to deck-to-column or wall at intervals along the joint. The E-8, by removing the metal anchor bracket present in the E-2 version, eliminates the need to dog-leg around columns, walls, etc., that interrupt continuous runs.

**FP 110/ ... with optional stainless steel coverplate**

Integral coverplate is available at purchaser's preference as an optional extra. Coverplate can be made non-skid at purchaser's preference through the field-application of an abrasive coating after installation of the joint system.

**CAD & Guide Specs**

Guide specifications and CAD details are available online at [emseal.com](http://emseal.com) or by contacting EMSEAL.

**Warranty**

Standard or project-specific warranties are available from EMSEAL on request.

**Availability & Price**

EMSEAL products are available throughout the United States and Canada. Prices are available from local representatives or direct from the manufacturer. The EMSEAL product range is continually being updated. Accordingly, we reserve the right to modify or withdraw any product without prior notice.