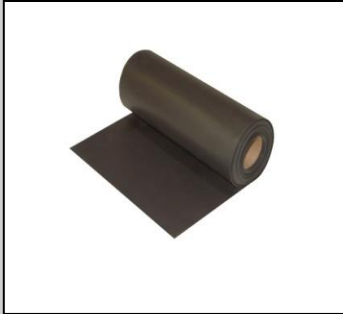


# Technical Information Sheet



## Enverge™ FlashGard™ Thru-Wall Reinforced Flashing

| Item Description | Item Number |
|------------------|-------------|
| 12" x 100'       | W56TWR1210  |
| 18" x 100'       | W56TWR1810  |
| 12" x 125'       | W56TWR1225  |

### Description

Enverge FlashGard Thru-Wall Reinforced Flashing membrane is a flexible EPDM membrane that when applied forms a moisture retarder in cavity wall construction by directing water to a building's exterior.

### Method of Application

1. Substrates must be clean, dry, smooth, and free of sharp edges, fines, loose or foreign materials, oil, grease, and other materials that may damage the membrane.
2. All roughened surfaces that can damage the membrane shall be repaired as specified to offer a smooth substrate.
3. All substrate voids greater than 6.3 mm (0.25") wide shall be properly filled with an acceptable fill material.
4. Firestone's Enverge FlashGard Thru-Wall Reinforced Flashing membrane must be installed in accordance with current Elevate specifications and details.

### Storage

- Store away from sources of punctures and physical damage.
- Store away from ignition sources as membrane will burn when exposed to open flame.

### Precautions

- Take care when moving, transporting, handling, etc. to avoid sources of punctures and physical damage.
- Refer to Safety Data Sheets (SDS) for safety information.

### LEED® Information

Post-Consumer Recycled Content: 0%  
 Post Industrial Recycled Content: 0%  
 Manufacturing Location: Prescott, AR

NOTE: LEED® is a registered trademark of the U.S. Green Building Council

| Packaging        |                  |                 |               |
|------------------|------------------|-----------------|---------------|
| Thickness        | Width            | Length          | Rolls Per Box |
| 1.27 mm (0.050") | 30.48 cm (12.0") | 30.5 m (100.0') | 1 roll        |
| 1.27 mm (0.050") | 45.72 cm (18.0") | 30.5 m (100.0') | 1 roll        |
| 1.27 mm (0.050") | 30.48 cm (12.0") | 38.1 m (125.0') | 1 roll        |

| Typical Properties      |  |
|-------------------------|--|
| Property                | Typical Performance                      |
| Base                    | EPDM                                     |
| Color                   | Black                                    |
| Solvents                | None                                     |
| Thickness               | 0.050 (1.26 mm) min $\pm$ 20%            |
| Width                   | 10.00" + 0"/- 0.125" (254.0 + 0/-3.2 mm) |
| Coating over scrim      | 0.022" (0.599 mm)                        |
| Breaking strength       | 232 lbf (1032 N) min                     |
| Elongation, ultimate    | 475% min                                 |
| Tearing strength        | 81 lbf (360 N) min                       |
| Brittleness point       | -65 °F (-54 °C) max                      |
| Ozone resistance        | Pass, no cracks                          |
| Heat aging              |  |
| Breaking strength       | 265 lbf (1179 N) min                     |
| Elongation, ultimate    | 300% min                                 |
| Linear dimension change | -0.43% max                               |
| Water absorption        | 2.94% max, mass                          |
| Weather resistance      | Pass                                     |

Enverge FlashGard Thru-wall Reinforced Flashing meets or exceeds the minimum requirements set forth by ASTM D 4637 for Type II scrim- reinforced EPDM single-ply membranes.

Please contact Holcim Technical Services at 800-428-4511 for further information.

This sheet is meant to highlight Elevate products and specifications and is subject to change without notice. Holcim takes responsibility for furnishing quality materials that meet published Elevate product specifications or other technical documents, subject to normal manufacturing tolerances. Neither Holcim nor its representatives practice architecture. Holcim offers no opinion on and expressly refuses any responsibility for the soundness of any structure. Holcim accepts no liability for structural failure or resultant damages. Consult a competent structural engineer prior to installation if the structural soundness or structural ability to properly support a planned installation is in question. No Holcim representative is authorized to vary this disclaimer.

Firestone, the brand of premier roofing, wall, and lining systems you know and trust, will be coming to you under a new name: Elevate. During our transition, products carrying the brand name **Firestone** will change to **Elevate** on product labels and packaging, Technical Information Sheets, and elsewhere. Only the brand name is changing. Our products remain the same.

For further information on our brand transition to Elevate, scan the code below with your smartphone, or visit our website: [www.holcimelevate.com](http://www.holcimelevate.com)

