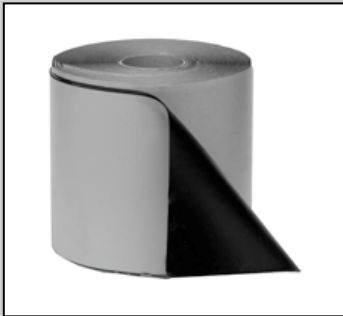


Technical Information Sheet



QUICKSEAM™ FORMFLASH

Item Description	Item Number
9" x 50' (228.6 mm x 15.24 m)	W56RAC1650
12" x 50' (304.8 mm x 15.24 m)	W56RAC1653
18" x 50' (457.2 mm x 15.24 m)	W56RAC162A

DESCRIPTION

QuickSeam FormFlash consists of uncured FormFlash factory laminated to QuickSeam Tape. It is designed to flash inside and outside corners, pipes, penetration pockets and other applications as required by Elevate Specifications and Details.

METHOD OF APPLICATION

1. Use QuickPrime™ Plus, QuickPrime Plus LVOC, Single-Ply QuickPrime Primer or Single-Ply LVOC Primer and a QuickScrubber™ or QuickScrubber Plus pad and handle to clean and prime mating surfaces. Refer to Elevate Installation Instruction Sheet for QuickSeam FormFlash (included in each carton) and Elevate Specifications and Details.
2. When cloudy conditions below 60 °F (15.6 °C) occur, use heat guns (without ignition sources) to warm QuickSeam FormFlash. This will ensure good formability of the QuickSeam FormFlash to the primed substrate.
3. On sunny days less than 70 °F (21.1 °C), place QuickSeam FormFlash on roof (prior to application) with flashing side up to allow QuickSeam FormFlash to warm to ensure good formability.
4. On sunny days greater than 70 °F (21.1 °C), place QuickSeam FormFlash on roof (prior to application) with release paper side up to prevent QuickSeam FormFlash from gaining too much heat and to ensure good formability.
5. Refer to application instructions for specifics: www.HolcimElevate.com

STORAGE

- Store in original unopened containers indoors at temperatures between 60 °F (15.6 °C) and 80 °F (26.7 °C).
- Do not store on roof in direct sunlight or at temperatures above 80 °F (26.7 °C).
- When exposed to lower temperatures; restore to room temperature prior to use.

SHELF LIFE

Shelf life of one year can be expected when stored in original container at temperatures between 60 °F (15.6 °C) and 80 °F (26.7 °C). Shelf life will be shortened if exposed to elevated temperatures.

PRECAUTIONS

Refer to Safety Data Sheets (SDS) for additional safety information.

PACKAGING

- 9" x 50' (228.6 mm x 15.24 m), 2 rolls per carton, 40 cartons per pallet
- 12" x 50' (304.8 mm x 15.24 m), 1 roll per carton, 36 cartons per pallet
- 18" x 50' (457.2 mm x 15.24 m), 1 roll per carton, 24 cartons per pallet

NOTE: QuickScrubber and/or QuickScrubber Plus pads and handles are included in each carton. Quantities vary depending on the QuickSeam product. Do not use brushes or rollers to apply primer.

LEED® INFORMATION

Post-Consumer Recycled Content: 0%

Post Industrial Recycled Content: 0%

Manufacturing Location: Prescott, AR

NOTE: LEED® is a registered trademark of the U.S. Green Building Council



TYPICAL PROPERTIES – QUICKSEAM TAPE	
Properties	Value
Base	Rubber Polymers
Color	Black
Solvents	None
Solids	100%
Cured State	Cured
Thickness	0.025" (0.635 mm) ± 0.007" (0.18 mm)

TYPICAL PROPERTIES – FLASHING MATERIAL	
Properties	Value
Base	EPDM
Color	Black
Solvents	None
Solids	100%
Cured State	Uncured
Thickness	0.065" (1.65 mm) ± 0.005" (0.13 mm)

Please contact Elevate Technical Services at 800-428-4511 for further information.

This sheet is meant to highlight Elevate products and specifications and is subject to change without notice. Amrize takes responsibility for furnishing quality materials that meet published Elevate product specifications or other technical documents, subject to normal manufacturing tolerances. Neither Amrize nor its representatives practice architecture. Amrize offers no opinion on and expressly refuses any responsibility for the soundness of any structure. Amrize accepts no liability for structural failure or resultant damages. Consult a competent structural engineer prior to installation if the structural soundness or structural ability to properly support a planned installation is in question. No Amrize representative is authorized to vary this disclaimer.