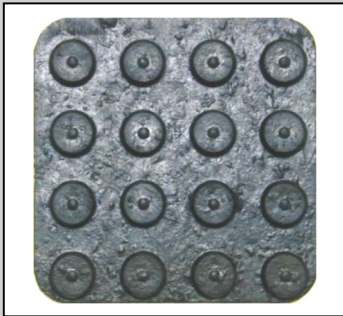


# Technical Information Sheet



## QuickSeam™ Walkway Pad

| Item Description                                   | Item Number |
|--|-------------|
| 30" X 30" X .30" thick (762 mm X 762 mm X 7.62 mm) | W56RAC1860  |

### Description

QuickSeam Walkway Pads are high quality rubber walkway pads with QuickSeam Tape factory laminated to the bottom surface. The QuickSeam Tape secures the walkway pads to the primed RubberGard™ EPDM membrane.

QuickSeam Walkway Pads help protect the membrane from damage due to necessary rooftop service traffic. The material exhibits excellent levels of hardness, tensile strength, wear, and tear resistance, and displays excellent cold flexibility.

The owner is responsible for maintaining walkways in specific areas:

- Required at all access points (ladders, hatches, doorways, etc.) to the roof.
- Suggested around all mechanical equipment which will require maintenance, and as a walkway system on roofs subjected to traffic more frequently than once per month.

### Method of Application

1. Position the QuickSeam Walkway pads so that the flat surface is over the completed RubberGard EPDM membrane, spacing each pad a minimum of 1" (25.4 mm) and a maximum 6" (152.4 mm) from each other to allow for drainage.
2. If installation of the QuickSeam Walkway Pads is over field fabricated seams, or within 3" (76.2 mm) of a lap edge, the seam must be stripped in using 5" QuickSeam Flashing. Apply the QuickSeam Flashing over the field seam for a distance of 6" (152.4 mm) minimum past each side of the walkway pad.
3. Use QuickPrime™ Plus, QuickPrime Plus LVOC, Single-Ply QuickPrime Primer, or Single-Ply LVOC Primer, applied with a QuickScrubber™ or QuickScrubber Plus pad and handle to clean and prime the RubberGard membrane.
4. Allow primer to dry according to the touch-push test.
5. Remove the release paper on the tape and place the taped walkway pad into place on the primed membrane.
6. Walk on the pad to assure proper overall adhesion.

### Storage

- Store in original unopened containers indoors at temperatures between 60 °F (15.6 °C) and 80 °F (26.7 °C).
- Do not store on roof in direct sunlight or at temperatures above 80 °F (26.7 °C).
- When exposed to lower temperatures; restore to room temperature prior to use.

## Shelf Life

Shelf life of two years can be expected when stored in original container at temperatures between 60 °F (15.6 °C) and 80 °F (26.7 °C). Shelf life will be shortened if exposed to elevated temperatures.

## Precautions

- Refer to Safety Data Sheets (SDS) for additional safety information.
- When installing walkway pads on a ballasted system, additional ballast must be added around pads to maintain 10 lb/sq ft (48.82 kg/sq m).
- Do not install walkway pads within 10' (3.05 m) of a roof edge when used in conjunction with ballasted systems. Concrete paving stones must be used in these areas.
- Do not expose to open flame or ignition source.
- Primers may have an adverse effect on polystyrene insulations.
- Do not install black QuickSeam Walkway Pads on UltraPly TPO membranes.

## LEED® Information

Post-Consumer Recycled Content: 0%

Post Industrial Recycled Content: 0%

Manufacturing Location: Guelph, ON – Canada; Wapakoneta, OH - USA

**NOTE:** LEED® is a registered trademark of the U.S. Green Building Council

## Packaging

- 50 pads per pallet
- 445 lb/pallet (201.9 kg/pallet)

| Typical Properties – QuickSeam Tape   |                                      |
|---|--------------------------------------|
| Properties  | Value                                |
| Base  | Rubber Polymers                      |
| Color   | Black                                |
| Solvents  | None                                 |
| Solids  | 100%                                 |
| Cured State   | Cured                                |
| Thickness   | 0.030" (0.77 mm) ± 0.005" (0.127 mm) |
| <b>NOTE:</b> QuickSeam Tape is factory laminated to walkway pads: 3 rows of 3" (76.2 mm) wide tape, or two rows of 7" (177.8 mm) wide tape. |                                      |

| Typical Properties – Walkway Pad |                  |                     |                 |
|----------------------------------|------------------|---------------------|-----------------|
| Properties                       | ASTM Test Method | Minimum Performance | Value           |
| Base                             | ---              | ---                 | Rubber Polymers |
| Elongation, % min:               |                  |                     |                 |
| Parallel to grain flow           | ---              | 75                  | ---             |
| Perpendicular to grain flow      | ---              | 75                  | ---             |
| Brittleness Temperature          | D 2137           | 40 °F (-40 °C)      | ---             |
| Hardness, Shore A                | D 2240           | 60 ± 5              | ---             |

Please contact Holcim Technical Services at 800-428-4511 for further information.

This sheet is meant to highlight Elevate products and specifications and is subject to change without notice. Holcim takes responsibility for furnishing quality materials that meet published Elevate product specifications or other technical documents, subject to normal manufacturing tolerances. Neither Holcim nor its representatives practice architecture. Holcim offers no opinion on and expressly refuses any responsibility for the soundness of any structure. Holcim accepts no liability for structural failure or resultant damages. Consult a competent structural engineer prior to installation if the structural soundness or structural ability to properly support a planned installation is in question. No Holcim representative is authorized to vary this disclaimer.

Firestone, the brand of premier roofing, wall, and lining systems you know and trust, will be coming to you under a new name: Elevate. During our transition, products carrying the brand name **Firestone** will change to **Elevate** on product labels and packaging, Technical Information Sheets, and elsewhere. Only the brand name is changing. Our products remain the same.

For further information on our brand transition to Elevate, scan the code below with your smartphone, or visit our website: [www.holcimelevate.com](http://www.holcimelevate.com)

