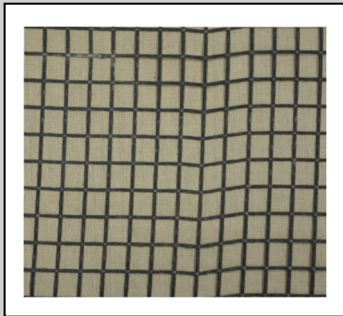


Technical Information Sheet



SKYSCAPE™ SLOPE GEOGRID

Item Description	Item Number
Slope Geogrid	Custom

DESCRIPTION

The SkyScape Slope Geogrid helps stabilize slopes greater than 2:10 or 10°. The geogrid consists of high molecular weight, high tenacity multifilament polyester yarns that are woven into a stable network placed under tension. The high strength polyester yarns are coated with thermoplastic polyvinyl material, making it inert to biological degradation and resistant to naturally encountered chemicals, alkalis, and acids. Use with SkyScape Slope Cleat.

METHOD OF APPLICATION

1. Starting from one corner of the highest point of the roof, unroll SkyScape Slope Geogrid.
2. Sides and ends of the roll may be abutted to adjacent rolls.
3. Cut to remove any leftover material.

STORAGE

- Deliver and store products in original packaging with manufacturer's labels and materials list intact and signed off.
- Store products in designated weather protected areas, elevated from ground, and protected from environmental damage.

SHELF LIFE

Indefinite

COVERAGE RATE

1,500 ft² (139 m²) per roll

CLEAN-UP

- Gather and dispose all debris upon completion of work.
- Clean all surfaces and inspect final assembly for approval.

LEED® INFORMATION

Post-consumer recycled content: 0%
 Post-industrial recycled content: 0%
 Manufacturing location: Murfreesboro, TN
 NOTE: LEED® is a registered trademark of the U.S. Green Building Council

TYPICAL PROPERTIES		
Property	Typical Performance	Test Method
Roll Size	10' x 150' (3 m x 45.7 m)	---
Ultimate tensile Strength	7,400 lb/ft (10 kN/m)	ASTM D6637
Creep Limited Strength	4,774 (lb/ft) (6.5 kN/m)	ASTM D5262
Aperture Size	3/4" x 3/4" (19 mm x 19 mm)	---

This sheet is meant to highlight Elevate products and specifications and is subject to change without notice. Amrize takes responsibility for furnishing quality materials that meet published Elevate product specifications or other technical documents, subject to normal manufacturing tolerances. Neither Amrize nor its representatives practice architecture. Amrize offers no opinion on and expressly refuses any responsibility for the soundness of any structure. Amrize accepts no liability for structural failure or resultant damages. Consult a competent structural engineer prior to installation if the structural soundness or structural ability to properly support a planned installation is in question. No Amrize representative is authorized to vary this disclaimer.