

MANUFACTURER

FIRE TRAK CORP., P.O. Box 485, 104 Cedar Ave. S., Watkins, MN 55389
800.394.9875 ph 877.374.1928 fax info@firetrak.com www.firetrak.com

DESCRIPTION

The Redi Klip is a simple, innovative head-of-wall deflection clip that provides positive attachment while allowing unencumbered movement of the roof or floor deck above.

BENEFITS

Redi Klips can replace double track, slotted track or clip systems in interior or exterior walls.

Redi Klips reinforce the stud to track connection or lock jamb or king studs at frames, while allowing deflection.

Redi Klips eliminate the need for clamps and provide easy access for attachment of fasteners.

Redi Klips allow you to place studs exactly where needed, so the edges of the gypsum wallboard can be easily caught to ensure proper fastening.

Redi Klips require only one wafer head framing screw per clip.

CODE COMPLIANCE

Redi Klips meet all standard building code requirements. The Redi Klip is U.L. Classified for use as a framing alternate member in most head-of-wall joints rated for up to 2" of movement.

MOVEMENT CAPABILITIES

The Redi Klip is U.L. Classified for use in most head-of-wall joints rated for up to 2" of movement. Redi Klips can handle different deflections by varying track depth.

<u>ASSEMBLY FIRE RATING</u>	<u>CEILING RUNNER LEG DIM.</u>	<u>RANGE OF MOTION</u>
Non-Rated	2"	1"
Non-Rated	3"	2"
Rated	Movement dependent on individual U.L. Listing	

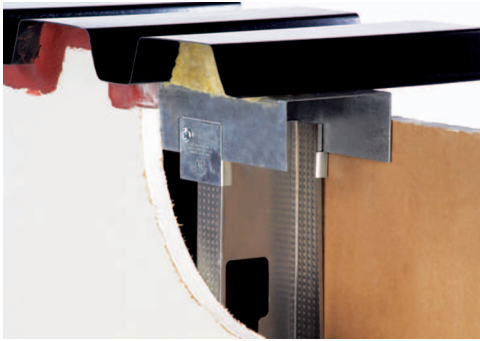
SPECIFICATIONS

<u>SIZES</u>	<u>STUD FLANGE WIDTH</u>	<u>STUD RETURN</u>	<u>TYPICAL STUD GAUGE</u>
SSR Short Stud Return	1-1/4"	3/16"	25, 22, 20
LSR Long Stud Return	1-3/8" - 1-5/8"	3/8" - 1/2"	16, 14

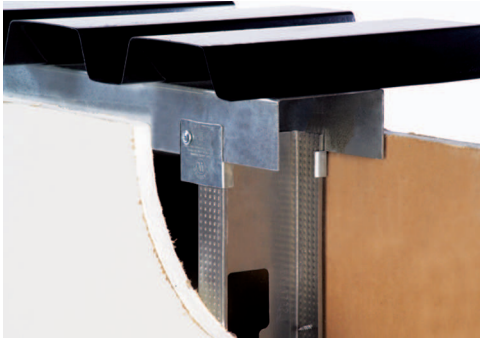
** All Redi Klips are manufactured in 20 GA steel.

PATENTED SYSTEM

The Redi Klip is patent pending.



Redi Klip used on a Rated Wall Deflection Dependent on Fire Caulk Selected



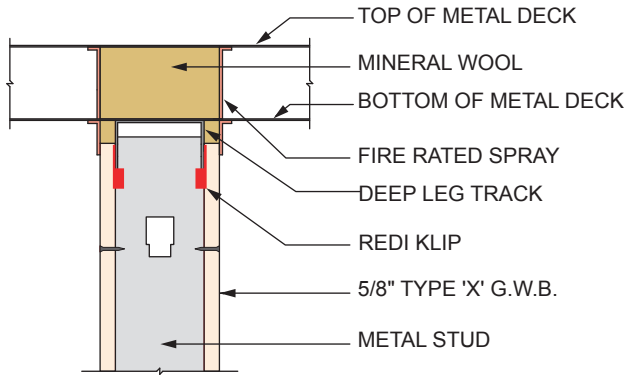
Redi Klip used on a Non-Rated Wall 1" of Deflection



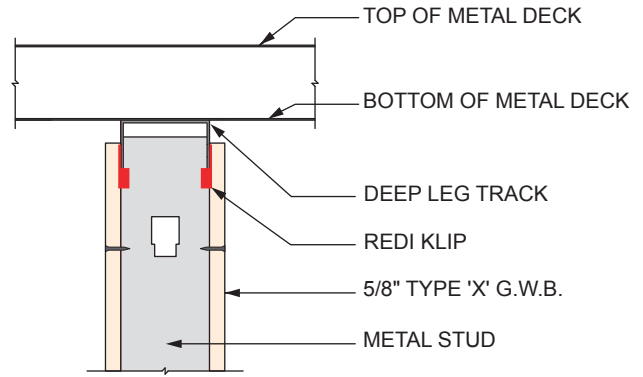
LIGHT GAUGE FRAMING
FOR USE IN JOINT SYSTEMS
SEE UL FIRE RESISTANCE DIRECTORY
2JA7

PATENT PENDING

HEAD-OF-WALL DETAILS



Perpendicular to Metal Deck
 1/2" Deflection & Extension Typical
 1 Hr. Rating Using Fire Rated Spray



Perpendicular to Metal Deck
 1" Deflection
 Not Fire Rated

INSTALLATION INSTRUCTIONS

The Redi Klip works on either side of a steel stud, so there are 2 pre-punched holes and 2 pre-formed clips to capture the inside return of the steel stud.

Twist the pre-formed clip around the inside return of the steel stud and push up to the underside of the track leg.

Attach the clip to the track leg with a wafer head framing screw in the hole farthest from the steel stud.



redi klip Easy Installation 1



redi klip Easy Installation 2



redi klip Easy Installation 3

PACKAGING AND ORDERING INFORMATION

Sold in quantities of 100 clips. **Major Credit Cards are accepted.**

No freight charge on clip orders sent FedEx Ground inside the Continental United States.

FedEx Express Saver, 2-Day and Overnight shipping available. Quoted on an order by order basis.

All other freight options quoted on an order by order basis.

No returns on shipped orders. Clip and freight prices subject to change.

SUBMITTAL APPROVALS

Job Name: _____

Contractor: _____

Approved By: _____

Date: _____