

NEW PRODUCT

# FLUID GROUT 161

## UL Certified to NSF/ANSI 61

Exceptional fluid consistency for placement within tight clearances down to 1/2 inch

High 1, 7, and 28 day strengths

Non-shrink from the time of placement

Air release technology per ACI 351.1 R

Permanent support for machinery requiring precision alignment

Does not contain gas generating additives, such as aluminum powder

95% Effective Bearing Area (EBA)



For information 1-800-243-2206 • FiveStarProducts.com

**SAFE for use with machinery  
and components that come into  
contact with potable water**



NSF/ANSI 61  
MH62949  
BARRIER MATERIAL  
WATER CONTACT TEMPERATURE 73°F (23°C)  
SURFACE AREA TO VOLUME 25 CM<sup>2</sup>/L

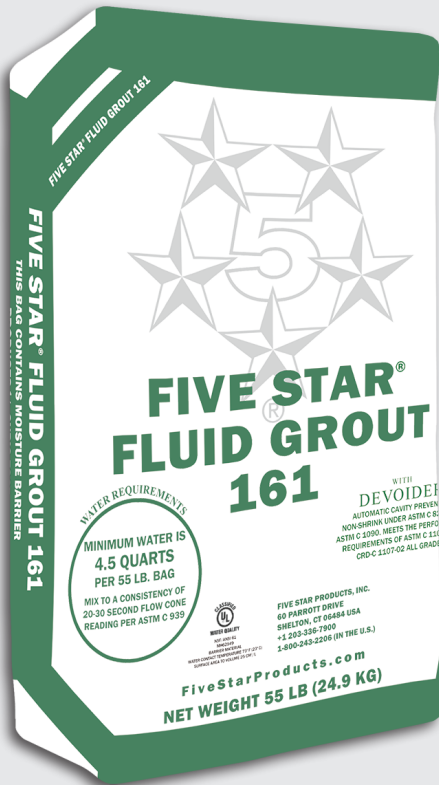


# FLUID GROUT 161

High-performance precision non-shrink fluid grout



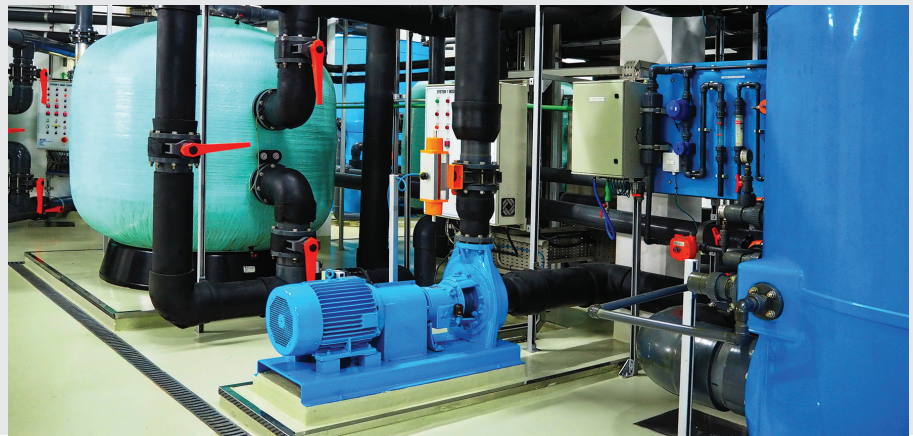
FIVE STAR



## Innovation

NSF/ANSI Standard 61 (NSF-61) is a set of national standards that relates to water treatment and establishes stringent requirements for the control of equipment that comes in contact with either potable water or products that support the production of potable water. These standards were developed to keep dangerous toxins from leaking into drinking water.

**FIVE STAR® FLUID GROUT 161** is a cement-based, nonmetallic, non-shrink fluid grout for supporting machinery and equipment in environments that may come into contact with potable water. It has been tested and certified by UL (Underwriter's Laboratory) to NSF/ANSI 61 - Drinking Water System Components - Health Effects.



**TANKS AND VESSELS:** treated water storage, sedimentation, chemical storage and cisterns

**PIPE REHABILITATION:** annular spaces for intake, distribution, and outflow piping

**STRUCTURAL:** steel, anchors, dowels, and precast concrete

**EQUIPMENT/MACHINERY:** instrumentation, flow-rate devices, centrifuges and cross-screw conveyors

**SMALL PUMPS:** residuals handling, and intake/distribution pumping stations

**TRAYS:** horizontal-flow roughing filtration bed trays and disinfection systems

## TYPICAL PROPERTIES

Compressive Strength, ASTM C 942 (C109 Restrained); psi (MPa)	Plastic Consistency	Fluid Consistency
1 Day	5,800 (40)	3,500 (24.2)
3 Days	7,500 (51.8)	6,000 (41.4)
7 Days	8,000 (55.2)	6,500 (44.9)
28 Days	10,000 (69.0)	8,000 (55.2)
Bond Strength, ASTM C 882 / 28 Days, psi (MPa)	2,000 (13.8)	
Early Height Change, ASTM C 827	0.0 to 4.0 %	
Hardened Height Change, ASTM C 1090	0.0 to 0.3%	
Effective Bearing Area	95%	
Freeze/Thaw, ASTM C 666A, 300 cycles	> 95% RDM	
Working Time @ 70 °F (21 °C)	30 minutes	

SPECIFICATIONS SUBJECT TO CHANGE. REFER TO DATASHEET AT FIVESTARPRODUCTS.COM.

Specified by the World's Best™



NSF/ANSI 61  
MH62949  
BARRIER MATERIAL  
WATER CONTACT TEMPERATURE 73°F (23°C)  
SURFACE AREA TO VOLUME 25 CM<sup>2</sup>L

## FIVE STAR PRODUCTS, INC.

60 Parrott Drive • Shelton, CT 06484-4733 USA

Phone: +1 203-336-7900 • Sales/Support: 1-800-243-2206

FiveStarProducts.com



© 2019 Five Star Products, Inc.  
13090 Rev A • Printed in the U.S.A.