

# We're Proud of Where We Are

Product Installations Around the World



April 2017



**FIVE STAR**

Specified by the World's Best™



# FIVE STAR

Specified by the World's Best™

**FIVE STAR PRODUCTS, INC.**

**60 Parrott Drive**

**Shelton, CT 06484-4733 USA**

**Phone: +1 203-336-7900**

**Fax: +1 203-336-7913**

**FiveStarProducts.com**



Strength you can build on.



## Since 1955

With over 60 years of experience as a major global provider of industrial-grade products to the construction and marine industries, Five Star Products, Inc. has been family-owned and operated since it began as the Nash Babcock Engineering Company. As an engineering consulting firm, the company developed more than 100 patents worldwide, and in 1966, operating as the U.S. Grout Corporation, began to manufacture a line of precision, non-shrink, non-metallic grouts. In 1985, after 30 years of growth and an expanding international customer base, the company was renamed Five Star Products, Inc. and began manufacturing an array of precision grouting, waterproofing and concrete repair and rehabilitation products under the Five Star® brand name.

Five Star Products' high-performance cement and epoxy-based products for the industrial, infrastructure, commercial, and marine markets are used in some of the world's most challenging environments and applications. The Five Star® product line includes high-performance machinery grouts, concrete repair and restoration products, chemical resistant coatings, waterproofing, and pile and column repair products. Five Star Products operates seven manufacturing facilities, all of which adhere to a strict quality control system conforming to the ISO 9001-2008 standard.



## Infrastructure & Machinery

| FACILITY                           | LOCATION          | PRODUCT                         | APPLICATION                                 |
|------------------------------------|-------------------|---------------------------------|---|
| California Steel                   | California        | Five Star® DP Epoxy Grout       |   |
| Champion Paper                     | Houston, TX       | Five Star® DP Epoxy Grout       | Digestor pump grouting                      |
| City of North Charleston           | N. Charleston, SC | Centri-Cast® Pipe Repair Mortar | Corrugated metal pipe<br>347' x 54" dia.    |
| Dow Chemical                       | Hahnville, LA     | Five Star® DP Epoxy Grout       | Pump grouting                               |
| Dow Chemical                       | Freeport, TX      | Five Star® DP Epoxy Grout       | Rotating machinery grouting                 |
| Echo Lake                          | Fort Worth, TX    | Centri-Cast® Pipe Repair Mortar | Corrugated drainage pipe<br>170' x 36" dia. |
| Florida DOT District 4, Palm Beach | Belle Glade, FL   | Centri-Cast® Pipe Repair Mortar | Corrugated metal pipe<br>82' x 60" dia.     |
| Ford Motor Company                 | Sterling, MI      | Five Star® DP Epoxy Grout       | Stamping press grouting                     |
| GE Plastics                        | Mississippi       | Five Star® HP Epoxy Grout       |   |
| International Paper                | Vicksburg, MS     | Five Star® DP Epoxy Grout       | Feed pump grouting                          |
| Kiawah Island Community Assoc.     | Kiawah Island, SC | Centri-Cast® Pipe Repair Mortar | Corrugated metal pipe<br>100' x 54" dia.    |
| Kiawah Island Community Assoc.     | Kiawah Island, SC | Centri-Cast® Pipe Repair Mortar | Corrugated metal pipe<br>100' x 48" dia.    |
| Kiawah Island Community Assoc.     | Kiawah Island, SC | Centri-Cast® Pipe Repair Mortar | Corrugated metal pipe<br>200' x 48" dia.    |
| New York City Transit              | New York          | Five Star® HP Epoxy Grout       |   |
| New York Times Co.                 | Queens, NY        | Five Star® DP Epoxy Grout       | Printing press grouting                     |
| Proctor & Gamble Tissue            | Oxnard, CA        | Five Star® DP Epoxy Grout       | Pump regrouting                             |
| South Carolina DOT District 6      | N. Charleston, SC | Centri-Cast® Pipe Repair Mortar | Corrugated metal pipe<br>95' x 48" dia.     |
| Stay Tru Services                  | Houston, TX       | Five Star® DP Epoxy Grout       | Inverted pump grouting                      |
| Travis County TNR                  | Austin, TX        | Centri-Cast® Pipe Repair Mortar | Corrugated drainage pipe<br>40' x 48" dia.  |
| Westvaco Corporation               | Luke, MD          | Five Star® DP Epoxy Grout       | Paper machine rebuild                       |



# Marine

| FACILITY                                   | LOCATION       | PRODUCT  | APPLICATION   |
|--|----------------|--|---|
| Beverly Bridge Pile Repairs                | Beverly, MA    | RockGrout 7000 UW                                    | Marine bridge pile repairs  |
| Boston Harbor Restoration                  | Boston, MA     | Structural Concrete® ES                              | Formed and pumped product for repairs to outflow tunnel structure |
| Brielle Bridge Project                     | Brielle, NJ    |  | Bridge pier repairs   |
| City of New Haven, Pardee Seawall Repair   | New Haven, CT  | Five Star Structural Concrete® UW HP & PG            | Repointing and repair of sea-wall spalls                          |
| Hoffmasters Marina, Dock Pile Repairs      | Woodbridge, VA | Rock Epoxy 21 & Pile Jacket Grout                    | Encapsulation and repair of marine timber piles                   |
| Mystic Marine Aquarium                     | Mystic, CT     | Five Star Structural Concrete®                       | Vertical wall repairs to tank                                     |
| New York LaGuardia Airport                 | Flushing, NY   | Five Star® Custom Repair Mortar (LGA 609)            | Pile cap upgrades under runway in Flushing Bay                    |
| Port of Oakland, Berth 10                  | Oakland, CA    | Five Star® Special Grout 120                         | Tremie repairs to concrete piles                                  |
| Rogers Dam Repair                          | Big Rapid, MI  | Five Star Structural Concrete® UW HP & PG            | Underwater spillway repairs                                       |
| U.S. Department of Energy, Hanford Nuclear | Richland, WA   | Five Star® Grout, Structural Concrete® V/O           |   |
| Diablo Canyon Nuclear                      | California     | Five Star® Grout                                     |   |
| Hanford WTP                                | Washington     | Five Star® Grout, Five Star Structural Concrete® V/O |   |



# Nuclear\*

| FACILITY               | LOCATION    | PRODUCT                    | APPLICATION |
|------------------------|-------------|----------------------------|-------------|
| Millstone Nuclear      | Connecticut | Five Star® Grout           |             |
| Oak Ridge Y-12         | Tennessee   | Five Star® Fluid Grout 100 |             |
| Palo Verde Nuclear     | Arizona     | Five Star® Grout           |             |
| Prairie Island Nuclear | Minnesota   | Five Star® Grout           |             |
| San Onofre Nuclear     | California  | Five Star® Grout           |             |
| Turkey Point Nuclear   | Florida     | Five Star® Grout           |             |

\*All usage at nuclear facilities is based upon “commercial grade” designation of product only. No nuclear for certification for products.



Specified by the World’s Best™



# Power

| FACILITY  | LOCATION       | PRODUCT   | APPLICATION |
|---|----------------|---|-------------|
| American Electric Power, John Amos Power Station                            | West Virginia  | Five Star® Fluid Grout 100  |             |
| Calpine Power   | Florida        | Five Star® Fluid Grout 100  |             |
| Chesapeake Power Station  | Virginia       | Five Star® DP Epoxy Grout, Five Star Structural Concrete®                   |             |
| Chesterfield Power Station  | Virginia       | Five Star® Grout & Five Star® DP Epoxy Grout                                |             |
| Commanche Power   | Colorado       | Five Star® Grout  |             |
| Connectiv Electric, Hay Road Power Station                                  | Delaware       | Five Star® Grout  |             |
| Consummes Power Plant   | California     | Five Star® Fluid Grout 100  |             |
| Duke Energy, Marshall Station   | North Carolina | Five Star® DP Epoxy Grout, Five Star® Grout, Five Star Structural Concrete® |             |
| Edgar Power Station   | Massachusetts  | Five Star® DP Epoxy Grout, Five Star® Fluid Grout 100                       |             |
| Florida Power & Light, Fort Meyers Power Plant                              | Florida        | Five Star® Fluid Grout 100  |             |
| Florida Power & Light, Ft. Lauderdale Plant                                 | Florida        | Five Star® Fluid Grout 100  |             |
| Florida Power & Light, Turkey Point Station                                 | Florida        | Five Star® Grout  |             |
| Gemma Power Station   | California     | Five Star® Fluid Grout 100  |             |
| IPP Power   | Utah           | Five Star® Fluid Grout 100  |             |
| Jacksonville Electric Authority, Baldwin Power Plant, Northside Power Plant | Florida        | Five Star® Fluid Grout 100  |             |
| Las Vegas Power Authority   | Nevada         | Five Star® Grout  |             |
| Mirant Power Station  | Maryland       | Five Star® Fluid Grout 100  |             |



# Power

| FACILITY  | LOCATION       | PRODUCT   | APPLICATION |
|---|----------------|---|-------------|
| Mitchell Power Station                                    | West Virginia  | Five Star® Grout                                      |             |
| Mystic Power Station                                      | Massachusetts  | Five Star® DP Epoxy Grout, Five Star® Fluid Grout 100 |             |
| Orlando Utilities   | Florida        | Five Star® Fluid Grout 100                            |             |
| Palo Verde Nuclear  | California     | Five Star® Grout                                      |             |
| Progress Energy   | North Carolina | Five Star® DP Epoxy Grout                             |             |
| Riverview Energy Plant                                    | California     | Five Star® Grout                                      |             |
| Santee Electric Authority, Winyah Station                 | Tennessee      | Five Star® Fluid Grout 100                            |             |
| Savannah Electric Authority                               | Tennessee      | Five Star® Grout                                      |             |
| Southern California Edison, Blythe Peaking Plant          | California     | Five Star® Grout & Five Star® DP Epoxy Grout          |             |
| Southern California Edison, Escondido Peaking Plant       | California     | Five Star® Grout & Five Star® DP Epoxy Grout          |             |
| Southern California Edison, San Marcos Peaking Plant      | California     | Five Star® Grout & Five Star® DP Epoxy Grout          |             |
| Southern California Edison, Terminal Island Peaking Plant | California     | Five Star® Grout & Five Star® DP Epoxy Grout          |             |
| Springerville Electric Authority                          | Arizona        | Five Star® Grout                                      |             |
| Tallahassee Power Plant, St. Marks Plant                  | Florida        | Five Star® Fluid Grout 100                            |             |
| Tampa Electric Company, Bayside (Tampa) Plant             | Florida        | Five Star® Fluid Grout 100                            |             |
| Tampa Electric Company, Mulberry Plant                    | Florida        | Five Star® Fluid Grout 100                            |             |
| LG & E  | Kentucky       | Five Star® HP Epoxy Grout                             |             |



Whatever your project, we have the solution.



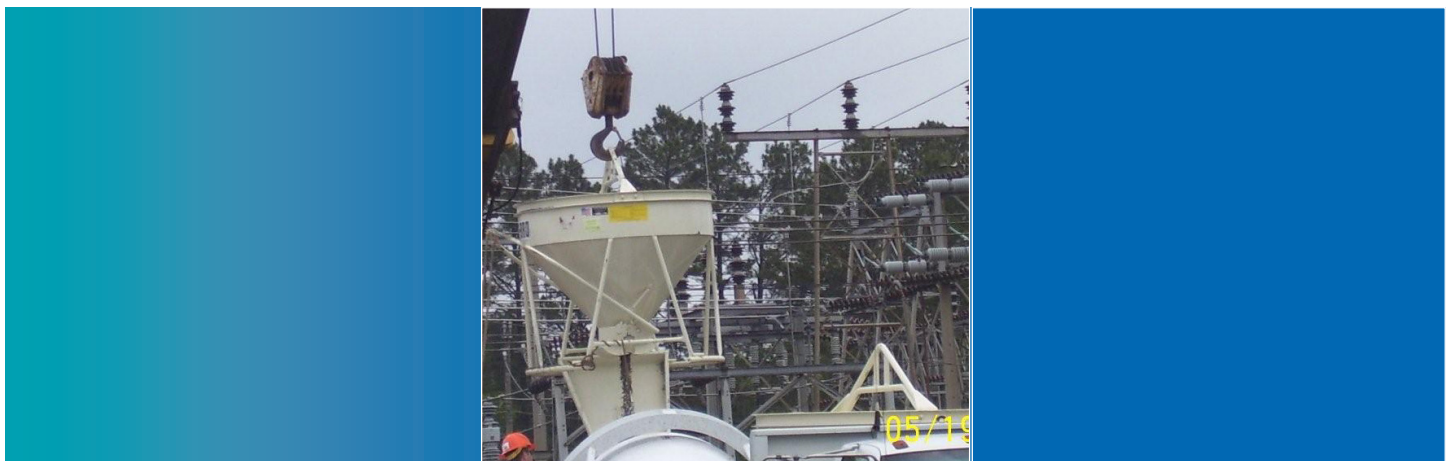
# Crane & Embedded Rail Grouting

| FACILITY   | LOCATION          | PRODUCT                        | APPLICATION  |
|--|-------------------|--------------------------------|--|
| Bath Iron Works  | Maine             | Five Star® HP Epoxy Grout      |  |
| Bath Iron Works  | Bath, ME          | Five Star® DP & HP Epoxy Grout | 900 lineal feet of rail grouted                              |
| Colombo Port Extension   | Sri Lanka         | Five Star® DP Epoxy Grout      | Crane rail grouting (30,000 ltrs)                            |
| Hazira Container Terminal  | India             | Five Star® Grout               | Crane rail grouting (21,000 ltrs)                            |
| Hazira Coal Handling Berths  | India             | Five Star® Grout               | Crane rail grouting (12,600 ltrs)                            |
| Karachi Port Trust, Karachi Container Terminal, Berths 22, 23 & 24 | Karachi, Pakistan | Five Star® DP & HP Epoxy Grout | 3,000 lineal feet of landside/ waterside crane rail grouted  |
| Karaikal Port  | India             | Five Star® Grout               | Crane rail grouting (18,600 ltrs)                            |
| Mumbai Dry Docks   | India             | Five Star® Grout               | Crane rail grouting (13,600 ltrs)                            |
| Mundra South Port Container Terminal                               | India             | Five Star® Grout               | Crane rail grouting (1,760 ltrs)                             |
| Mundra West Port Container Berth 4                                 | India             | Five Star® Grout               | Crane rail grouting (9,200 ltrs)                             |
| Northrop Grumman   | Pascagoula, MS    | Five Star® DP Epoxy Grout      | Crane rail grouting  |
| Port of Long Beach   | California        | Five Star® DP Epoxy Grout      |  |
| Port of Long Beach Piers T, G and F                                | San Pedro, CA     | Five Star® DP Epoxy Grout      | Crane rail grouting  |
| Port of Long Beach, Pacific Container Terminal, Berths 245-247     | Long Beach, CA    | Five Star® DP & HP Epoxy Grout | 850 cubic feet of epoxy grout installed for new crane rail   |
| Port of Long Beach, Pier F, Berths 227-230                         | Long Beach, CA    | Five Star® DP & HP Epoxy Grout | 900 cubic feet of epoxy grout installed for rail replacement |
| Port of Long Beach, Pier J, Berths 260-264                         | Long Beach, CA    | Five Star® DP & HP Epoxy Grout | 1,400 cubic feet of epoxy grout installed under new rails    |
| Port of Long Beach, Pier J, Berths 266-270                         | Long Beach, CA    | Five Star® DP & HP Epoxy Grout | 1,250 cubic feet of epoxy grout installed                    |
| Port of Los Angeles, Berths 302-305                                | San Pedro, CA     | Five Star® DP & HP Epoxy Grout | 1,400 cubic feet of epoxy grout for new crane rails          |



# Crane & Embedded Rail Grouting

| FACILITY   | LOCATION        | PRODUCT                        | APPLICATION   |
|--|-----------------|--------------------------------|---|
| Port of Los Angeles, Matson Terminal, Berths 206-209 | San Pedro, CA   | Five Star® DP & HP Epoxy Grout | 780 cubic feet of epoxy grout installed   |
| Port of Los Angeles, Pier 300                        | San Pedro, CA   | Five Star® DP Epoxy Grout      | 2,100 cubic feet of epoxy grout installed   |
| Port of Los Angeles, Pier A, Berths 144-146          | San Pedro, CA   | Five Star® DP & HP Epoxy Grout | 800 cubic feet of epoxy grout placed for new rails                                |
| Port of New Orleans, Nashville Wharf B Upgrade       | New Orleans, LA | Five Star® DP & HP Epoxy Grout | 700 cubic feet of epoxy grout installed under crane rail                          |
| Port of New Orleans, Nashville Wharf C Project       | New Orleans, LA | Five Star® DP & HP Epoxy Grout | 800 cubic feet of epoxy grout installed   |
| Port of Oakland                                      | Oakland, CA     | Five Star® DP Epoxy Grout      | Crane rail grouting   |
| Port of Oakland, Berths 52-53                        | Oakland, CA     | Five Star® DP & HP Epoxy Grout | 1,400 lineal feet of rail grouted   |
| Port of Oakland, Berths 57-59                        | Oakland, CA     | Five Star® DP & HP Epoxy Grout | ZPMC Super Post Panamax cranes; 2100 lineal feet of rail                          |
| Port of Oakland, Crane rail rehab                    | Oakland, CA     | Five Star® DP & HP Epoxy Grout | 2,200 lineal feet of replacement rail grouted                                     |
| Port of Seattle                                      | Seattle, WA     | Five Star® HP Epoxy Grout      |   |
| Port of Seattle Terminal 5                           | Seattle, WA     | Five Star® DP Epoxy Grout      | RegROUT   |
| Port of Seattle, Terminal 25, new crane rail         | Seattle, WA     | Five Star® DP & HP Epoxy Grout | 1,200 lineal feet of rail grouted   |
| Port of Seattle, Terminal 5                          | Seattle, WA     | Five Star® DP Epoxy Grout      | Replacement of failed cement grout under 300 lineal feet of rail with epoxy grout |
| Port of Ashdod                                       | Israel          | Five Star® DP Epoxy Grout      |   |
| Port of Los Angeles                                  | California      | Five Star® DP Epoxy Grout      |   |
| Port of Tacoma                                       | Washington      | Five Star® HP Epoxy Grout      |   |
| Southern Pacific Rail                                | Colton, CA      | Five Star® DP Epoxy Grout      | Rail grouting   |
| Vallarapadam Port - Kerala                           | India           | Five Star® DP Epoxy Grout      | Crane rail grouting (16,000 ltrs)   |



Trusted, dependable choices.

## Refining & Transmission

| FACILITY                            | LOCATION               | PRODUCT                   | APPLICATION                   |
|-------------------------------------|------------------------|---------------------------|-------------------------------|
| Atofina                             | Carville, LA           | Five Star® DP Epoxy Grout | Pump grouting                 |
| Air Products & Chemicals            | Pennsylvania           | Five Star® DP Epoxy Grout |                               |
| American Electric Power             | Ohio                   | Five Star® HP Epoxy Grout |                               |
| Amoco Gas Plant                     | Pascagoula, MS         | Five Star® DP Epoxy Grout | Pump grouting                 |
| Amoco Gas Plant                     | Louisiana              | Five Star® DP Epoxy Grout |                               |
| BASF                                | Geismar, LA            | Five Star® DP Epoxy Grout | Pump grouting                 |
| BP/Arco                             | Washington             | Five Star® DP Epoxy Grout |                               |
| BVI Refining                        | British Virgin Islands | Five Star® DP Epoxy Grout |                               |
| California Steel Mill Shutdown      | Fontana, CA            | Five Star® DP Epoxy Grout | Compressor rebuild            |
| Chesapeake Power                    | Virginia               | Five Star® HP Epoxy Grout |                               |
| Chevron Chemical Belle Chase        | Louisiana              | Five Star® HP Epoxy Grout |                               |
| Chevron Pascagoula Refinery         | Mississippi            | Five Star® DP Epoxy Grout |                               |
| Chevron Refining                    | California             | Five Star® DP Epoxy Grout |                               |
| Chevron Texaco                      | Richmond, CA           | Five Star® DP Epoxy Grout | 1250 HP skid mounted pump     |
| Chevron Texaco Refining             | El Segundo, CA         | Five Star® DP Epoxy Grout | LFSO compressor grouting      |
| Chevron USA                         | Richmond, California   | Five Star® DP Epoxy Grout |                               |
| Chevron USA Hawaii Refinery         | Hawaii                 | Five Star® DP Epoxy Grout |                               |
| Citgo Refining                      | Louisiana              | Five Star® DP Epoxy Grout |                               |
| Cochin Refinery                     | India                  | Five Star® HTR Grout      | Coke drums (10 tons)          |
| Conoco Refining                     | Lake Charles, LA       | Five Star® DP Epoxy Grout | Pump and exchanger grouting   |
| Conoco Refining                     | Belle Chase, LA        | Five Star® DP Epoxy Grout |                               |
| Cytec Chemical                      | Louisiana              | Five Star® DP Epoxy Grout |                               |
| Dominion Resources Chesapeake Power | Chesapeake, VA         | Five Star® DP Epoxy Grout | Crusher and conveyor grouting |





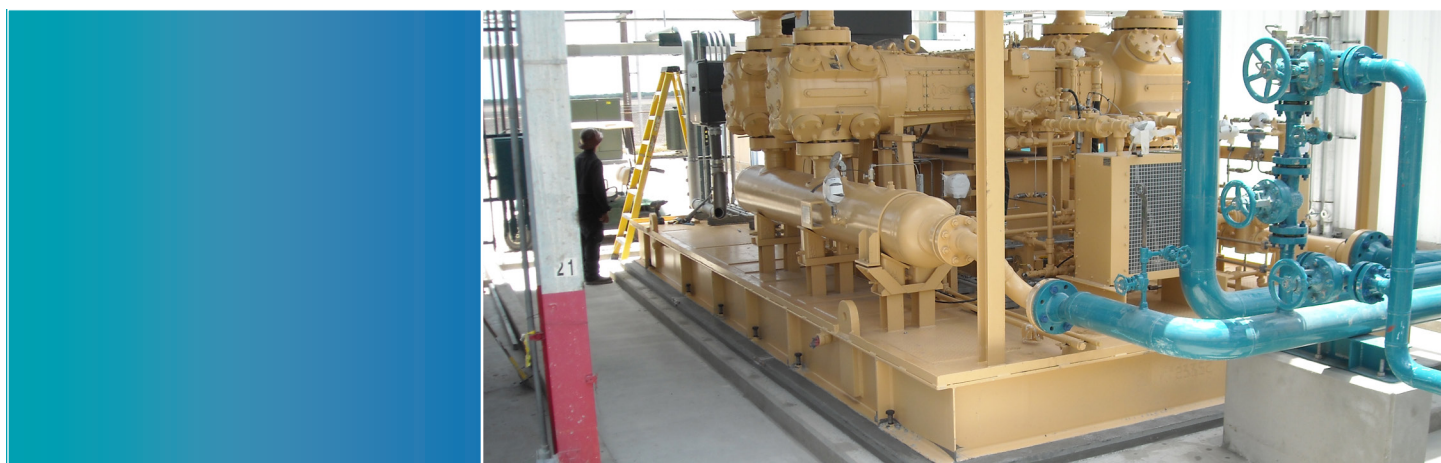
## Refining & Transmission

| FACILITY   | LOCATION          | PRODUCT                   | APPLICATION                              |
|--|-------------------|---------------------------|--|
| Duke Energy  | Ohio              | Five Star® DP Epoxy Grout |  |
| DuPont Chemical  | Mississippi       | Five Star® DP Epoxy Grout |  |
| Dupont DeLisle Plant                                     | Pas Christian, MS | Five Star® DP Epoxy Grout | Compressor grouting                      |
| Escondida Mining SA                                      | Santiago, Chile   | Five Star® Grout          |  |
| Exxon Mobil Refining                                     | Louisiana         | Five Star® DP Epoxy Grout |  |
| First Chemical / DuPont                                  | Louisiana         | Five Star® DP Epoxy Grout |  |
| Georgia Gulf Chemical                                    | Plaquemine, LA    | Five Star® DP Epoxy Grout | Compressor grouting                      |
| Georgia Pacific  | Monticello, MS    | Five Star® DP Epoxy Grout | Digester pump grouting                   |
| Giant Industries   | Virginia          | Five Star® DP Epoxy Grout |  |
| Giant Industries Refining                                | Yorktown, VA      | Five Star® DP Epoxy Grout | Pump grouting                            |
| Hercules Chemical  | Brunswick, GA     | Five Star® DP Epoxy Grout | Pump grouting                            |
| Hercules Chemical  | Georgia           | Five Star® DP Epoxy Grout |  |
| Hulls America  | Mobile, AL        | Five Star® DP Epoxy Grout | 500 HP pump grouting                     |
| Hulls America Chemical                                   | Georgia           | Five Star® DP Epoxy Grout |  |
| IOC Paradip Refinery                                     | India             | Five Star® HTR Grout      | Coke drums (15 tons)                     |
| Jacksonville Electric Authority<br>Northside Power Plant | Jacksonville, FL  | Five Star® DP Epoxy Grout | Grouting of feed pumps, coal<br>crushers |
| JEA Power  | Florida           | Five Star® DP Epoxy Grout |  |
| Koch Refining  | Minnesota         | Five Star® HP Epoxy Grout |  |
| Mobil Oil  | Beaumont, TX      | Five Star® Grout          |  |
| Mobil Oil  | Torrance, CA      | Five Star® Grout          |  |
| Murphey Refining   | Louisiana         | Five Star® DP Epoxy Grout |  |
| Northern States Power                                    | Minnesota         | Five Star® HP Epoxy Grout |  |
| Oro Grande Cement Plant                                  | Riverside, CA     | Five Star® DP Epoxy Grout | Pump grouting                            |
| Phillips Petroleum                                       | Sweeney, TX       | Five Star® DP Epoxy Grout |  |



## Refining & Transmission

| FACILITY                      | LOCATION         | PRODUCT                   | APPLICATION                |
|-------------------------------|------------------|---------------------------|----------------------------|
| PPG Chemical                  | Lake Charles, LA | Five Star® DP Epoxy Grout | Feed pump grouting         |
| Reliance Refinery - Jam Nagar | India            | Five Star® HTR Grout      | Coke drums (10 tons)       |
| Sahkalin Gas Plant            | Russia           | Five Star® HP Epoxy Grout |                            |
| Shell Chemical                | Louisiana        | Five Star® HP Epoxy Grout |                            |
| Southern Natural Gas          | Thomaston, GA    | Five Star® DP Epoxy Grout | 800 HP compressor grouting |
| Southern Natural Gas          | Georgia          | Five Star® DP Epoxy Grout |                            |
| Southern NV Water District    | Nevada           | Five Star® DP Epoxy Grout |                            |
| Star Enterprise               | Port Arthur, TX  | Five Star® Grout          |                            |
| Tennessee Valley Authority    | Athens, AL       | Five Star® Grout          |                            |
| TVA Power                     | Kentucky         | Five Star® DP Epoxy Grout |                            |
| US Gypsum                     | Jacksonville, FL | Five Star® DP Epoxy Grout | Crusher drive grouting     |
| Vadinar Refinery              | India            | Five Star® HTR Grout      | Coke drums (20 tons)       |
| Valero Refining               | Norco, LA        | Five Star® DP Epoxy Grout | Exchanger grouting         |
| Valero Refining               | Louisiana        | Five Star® DP Epoxy Grout |                            |
| Valero Refining               | Delaware         | Five Star® DP Epoxy Grout |                            |



# Five Star Products offers a wide spectrum of grouting and repair solutions. Ask which one is right for your application.

## Precision Non-Shrink Cementitious Grouts

Five Star® Cement Grouts meet or exceed industry specification requirements CRD-621 and ASTM C 1107. Combined with precision non-shrink performance and the highest commercially available Effective Bearing Area (EBA), Five Star® Cement Grouts ensure the most consistent and highest level of performance across a wide range of temperatures and job site conditions.

- Five Star® Grout
- Five Star® High-Strength
- Five Star® Fluid Grout 100
- Five Star® Fluid Grout PT
- Five Star® HTR Grout
- Five Star® Instant Grout
- Five Star® Special Grout 110
- Five Star® Special Grout 120
- Five Star® Special Grout 150
- Five Star® Special Grout 400
- Five Star® Special Grout 550

## Precision Non-Shrink Epoxy Grouts

Five Star® Epoxy Grouts provide industry-leading performance with 95% Effective Bearing Area and 0.00% shrinkage when tested in accordance with ASTM C 827. Ultra-low creep, superior compressive strengths, and high chemical, impact, and vibration resistance all characterize Five Star® Epoxy Grouts allowing them to provide the performance you need where it matters most.

- Five Star® DP Epoxy Grout
- Five Star® DP Epoxy Grout PG
- Five Star® HP Epoxy Grout
- Five Star® SP Epoxy Grout
- Five Star® Elastomeric Grout
- Five Star® Epoxy Chock & Epoxy Chock EX
- Five Star® Epoxy Novolac Grout
- Five Star® Fluid Grout
- Five Star® MineForm® Backer Grout
- Five Star® Rapid Epoxy Grout
- Five Star® Crane Rail Grout

## Chemical Grouts & Polyurethanes

Industrial strength repair for leaking concrete and masonry structures. Polyurethane grout can either bond with concrete to form a watertight, permanent seal or to become rigid, filling voids and acting as a stabilizer. Chemical grouts are used in sewers, manholes, tanks, vaults, tunnels, and many other applications.

- Five Star® Crack Repair SLV
- Five Star® Poly Water Cut (hydrophobic)
- Five Star® PolyFlex Gel (hydrophilic)
- Five Star® PolyFlex SLV (hydrophobic)

## Specialty Concrete Repair

- Five Star Structural Concrete® HTR
- Five Star Structural Concrete® HTR Shotcrete
- Five Star Structural Concrete® Underwater HP





## Concrete Repair & Overlays

Five Star Products continues to provide industry-leading and innovative solutions to the many challenges associated with structural concrete repair and restoration applications. Five Star Products offers a full line of products where permanent bond, dimensional stability, high early compressive strengths, durability and ease of use are required.

- Five Star® MP Epoxy Patch
- Five Star Novolac Structural Concrete®
- Five Star Structural Concrete®
- Five Star Structural Concrete® V/O
- Five Star Structural Concrete® ES
- Five Star Structural Concrete® Gunitite
- Five Star Structural Concrete® Gunitite S300
- Five Star Structural Concrete® Gunitite WP
- Five Star Structural Concrete® Gunitite WP-FS
- Five Star Structural Concrete® S300
- Five Star Summerset®
- Five Star® EZ-Cure® Repair Mortar
- Five Star® EZ-Cure® Repair Mortar V/O

## Infrastructure & Commercial Concrete Repair

- Five Star Centri-Cast® Pipe Repair Mortar: Standard and with Microban® Technology\*
- Five Star Centri-Cast® Pipe Repair Mortar High Strength: Standard and with Microban® Technology\*
- Five Star Centri-Cast® Pipe Prep
- Five Star Centri-Cast® One Pass WP
- Five Star Centri-Cast® Basalt Liner
- Five Star Centri-Cast® Water Stop
- Five Star® Highway Patch
- Five Star® Highway Patch FR
- Five Star® Highway Patch Winter
- Five Star® Rapid Surface Repair Easy Mix
- Five Star® Rapid Surface Repair EpoxyFix™
- Five Star® Rapid Surface Repair PolyFix™
- Five Star® Rapid Surface Repair PF-60
- Five Star® Rapid Surface Repair R-60

## Adhesives & Sealants

- Five Star® Bonding Adhesive
- Five Star® Epoxy Adhesive LV
- Five Star® Segmental Bridge Adhesive: Standard and LT for Lower Temps
- Five Star® Epoxy Primer
- Five Star Centri-Cast® Joint Filler
- Five Star® Control Joint Sealer
- Five Star® HP Anchor Gel
- Five Star® RS Anchor Gel
- Five Star® Pressure Port Crack Repair System

## Coatings & Waterproofing

- Five Star Centri-Cast® Coal Tar Epoxy
- Five Star® Epoxy Novolac Coating
- Five Star® Epoxy Novolac Non-Sag Coating
- Five Star® Epoxy Novolac Waterborne Primer
- Five Star® Waterproofing



# FIVE STAR

Specified by the World's Best™



## **FIVE STAR PRODUCTS, INC.**

60 Parrott Drive  
Shelton, CT 06484-4733 USA

Ph: +1 203-336-7900

Fax: +1 203-336-7913

Support (in the U.S.): 1-800-243-2206

[FiveStarProducts.com](http://FiveStarProducts.com)