

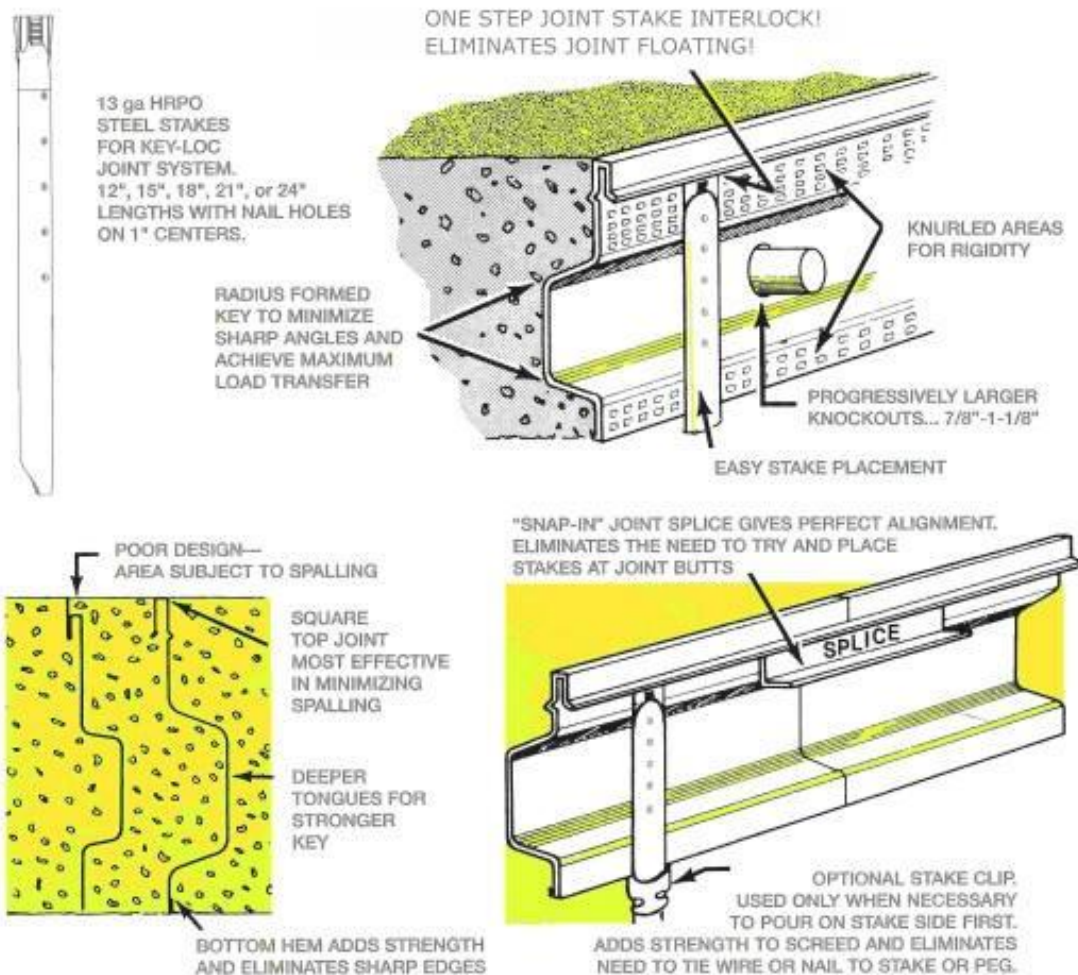
Key-Loc Joint System

Construction Joints - Control Joints

When indicated on drawings or called for in specifications the contractor shall furnish and install **Key-Loc® Joint System**, a *one step* interlocking joint-stake keyway system with ratchet top stakes, joint splices and optional stake clips.

Advantages

- ◆ Joint and stake interlock, eliminates joint floating or rising from the stake.
- ◆ Eliminates time consuming process of wiring, screwing, or nailing joint to a stake or peg.
- ◆ Square top designed to minimize spalling and provide for expansion to control cracking.
- ◆ Eliminates checker boarding, edge curling, and saw cutting.
- ◆ Saves on installation time - stakes interlock with joint at any point . . . joint splice eliminates need to place stake at joint butts.
- ◆ Each keyway individually designed for maximum load transfer with keyway centered in slab.

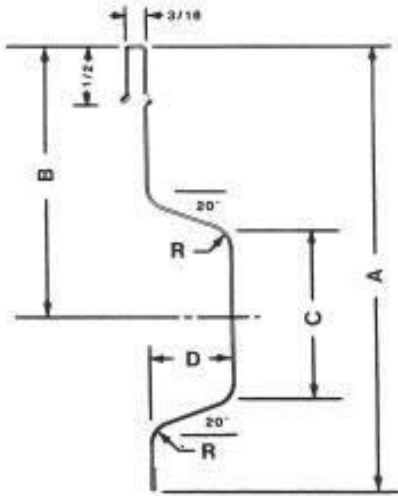


Form-A-Key Products

a division of **Cardinal Manufacturing Company, Inc.**
225 Eiler Avenue, P.O. Box 14127
(502)361-1396, 1-800-662-5576, Fax: (502)363-5905

Key-Loc Joint System

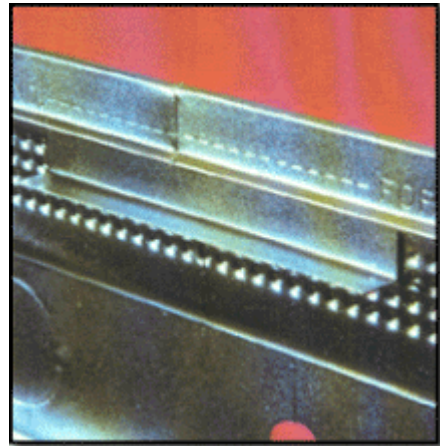
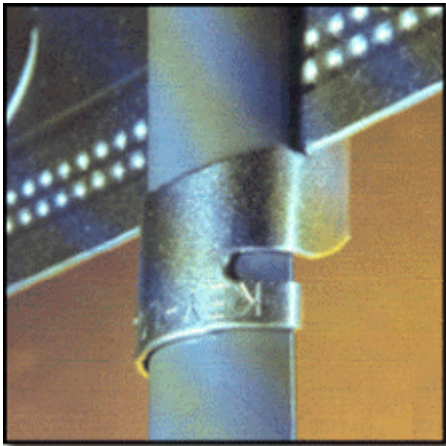
PRODUCT SPECIFICATIONS



SLAB THICKNESS	A	B	C	D	R	KNOCK-OUT DIAMETER
3"	2 1/4"	1 1/2"	3/4"	3/8"	1/8"	N/A
4"	3 1/8"	2"	1 3/32"	11/16"	3/16"	7/8"
5"	4 1/8"	2 1/2"	1 9/16"	3/4"	13/64"	7/8"
6"	5 1/8"	3"	1 15/16"	7/8"	7/32"	1 1/8"
8"	7 1/8"	4"	2 3/8"	1 1/16"	1/4"	1 1/8"
10" - 12"	9 1/8"	5"	3 1/4"	1 1/8"	9/32"	1 1/8"

KNOCK-OUTS ON 6" CENTERS • RATCHET TOP STAKES 12", 15", 18", 21", 24"

ASTM NUMBERS - KEY-LOC® Joint meets Corp of Engineers Specification "03300-Concrete for Building Construction" and has ASTM numbers of A653 for the joint and A569 for the stakes.



Form-A-Key Products

a division of **Cardinal Manufacturing Company, Inc.**
 225 Eiler Avenue, P.O. Box 14127
 (502)361-1396, 1-800-662-5576, Fax: (502)363-5905