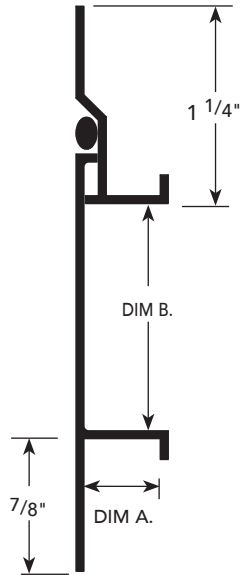


PRODUCT DETAIL



USAGE

Fry Reglet 2-Piece Plaster Control Screed is used inside (plaster) or outside (stucco) to prevent cracking. Separates wall sections and allows minor independent movement of sections on either side. Installed vertically or horizontally, they provide an attractive reveal consistent with the appearance of other Fry Reglet moldings. Fry Reglet's 2-Piece plaster control screed allows for 3/16" of movement.

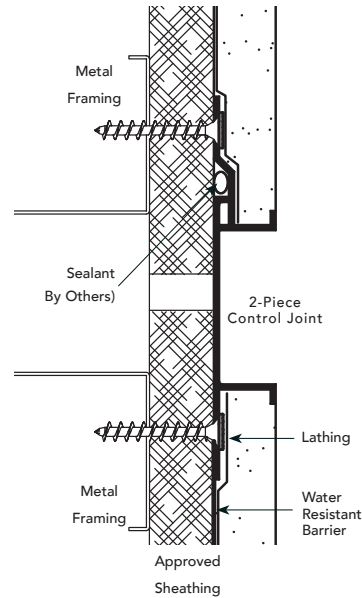
GUIDE SPECIFICATION

Where indicated on drawings, Fry Reglet 2-Piece Plaster Control Screed, as manufactured by Fry Reglet Corporation, shall be installed. Aluminum shall be extruded alloy 6063 T5, with chemical conversion coating, clear anodized or other specified finish. Refer to finish section.

INSTALLATION DETAIL / Cross Section

PD.1

2-PIECE PLASTER CONTROL SCREED



PERFORMANCE REQUIREMENTS

2-Piece control joint shall withstand rainfall of 8" per hour with wind loads up to 41.6 lbs per square foot equivalent to 130+ mph wind driven rain) with no water intrusion when tested in accordance with ASTM 331.

SIZES

DIM. A	DIM. B REVEAL WIDTH	NUMBER
1/2"	3/4"	DCS-50-75 2-PC
1/2"	1 1/2"	DCS-50-150 2-PC
3/4"	1/4"	PCS-75-25 2-PC
3/4"	1/2"	PCS-75-50 2-PC
3/4"	3/4"	PCS-75-75 2-PC
3/4"	1"	PCS-75-100 2-PC
3/4"	1 1/2"	PCS-75-150 2-PC
3/4"	2"	PCS-75-200 2-PC