

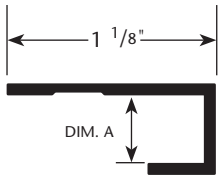


FRY REGLET
ARCHITECTURAL METALS

Fiber Cement Panel Trim (5/16")

J-CHANNEL TRIM

PRODUCT DETAIL :



USAGE

Fry Reglet J-Channel is a termination trim designed to cover the edge of Fiber Cement Panel at intersections and at door and window openings.

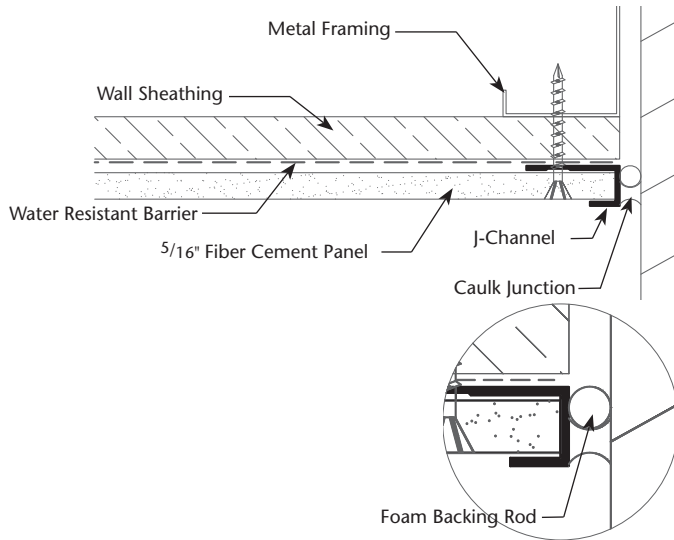
GUIDE SPECIFICATION

Where indicated on drawings, Fry Reglet J-Channel, as manufactured by Fry Reglet Corporation, shall be installed. Aluminum shall be extruded alloy 6063 T5, clear anodized or chemical conversion coating, unless otherwise specified.

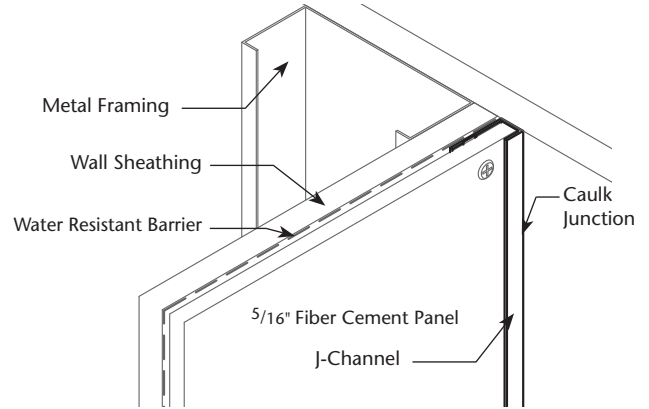
J-CHANNEL SIZES

DIM. A	NUMBER
NOM. 3/8"	FCP - J CHANNEL

INSTALLATION DETAIL : Cross Section



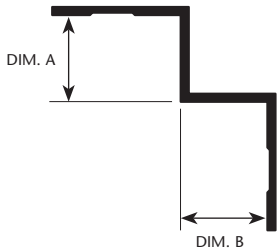
INSTALLATION DETAIL : ISO View



NOTE: Do not use J-Channel Trim horizontally with short leg up.

INSIDE CORNER TRIM

PRODUCT DETAIL :



USAGE

Fry Reglet Inside Corner creates a square and true termination point for Fiber Cement Panel at an Inside Corner.

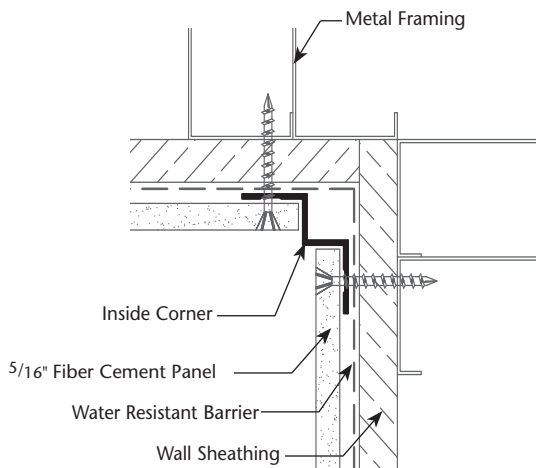
GUIDE SPECIFICATION

Where indicated on drawings, Fry Reglet Inside Corner, as manufactured by Fry Reglet Corporation, shall be installed. Aluminum shall be extruded alloy 6063 T5, clear anodized or chemical conversion coating, unless otherwise specified.

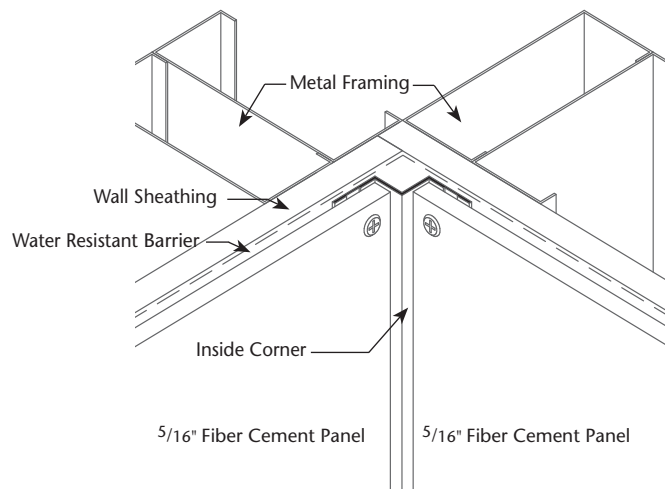
INSIDE CORNER SIZES

DIM. A REVEAL DEPTH	DIM. B REVEAL DEPTH	NUMBER
NOM. 1/2"	NOM. 1/2"	FCP - INSIDE CNR

INSTALLATION DETAIL : Cross Section

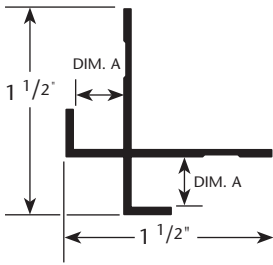


INSTALLATION DETAIL : ISO View



OUTSIDE CORNER TRIM

PRODUCT DETAIL :



USAGE

Fry Reglet Outside Corner creates a straight and true, abuse resistant corner with exposed flanges that cover the vertical ends of the Fiber Cement Panel.

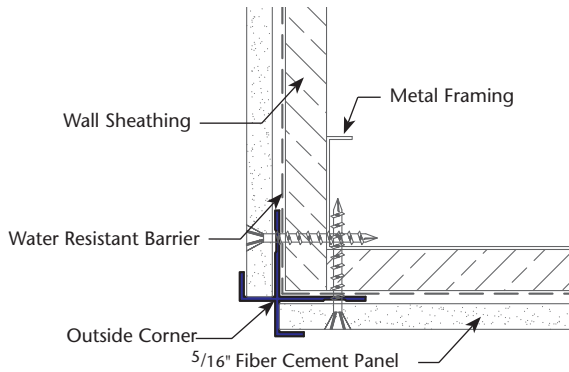
GUIDE SPECIFICATION

Where indicated on drawings, Fry Reglet Outside Corner, as manufactured by Fry Reglet Corporation, shall be installed. Aluminum shall be extruded alloy 6063 T5, clear anodized or chemical conversion coating, unless otherwise specified.

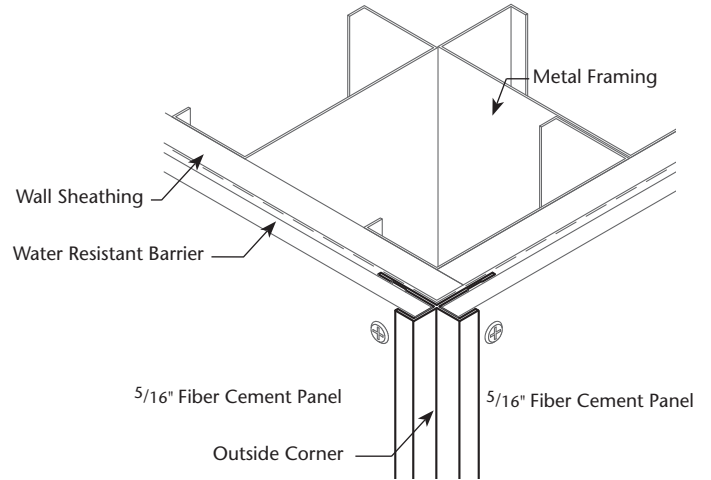
OUTSIDE CORNER SIZES

DIM. A REVEAL DEPTH	NUMBER
NOM. 3/8"	FCP - OUTSIDE CNR

INSTALLATION DETAIL : Cross Section

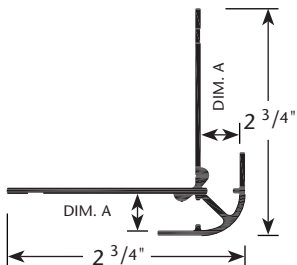


INSTALLATION DETAIL : ISO View



BULLNOSE OUTSIDE CORNER TRIM

PRODUCT DETAIL :



USAGE

Fry Reglet Bullnose Outside Corner creates a straight and true, abuse resistant rounded corner with exposed flanges that cover the vertical ends of the Fiber Cement Panel Siding.

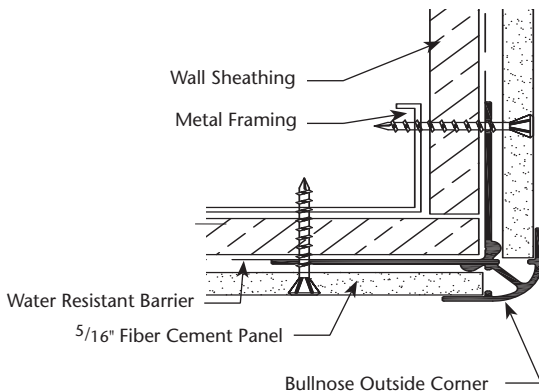
GUIDE SPECIFICATION

Where indicated on drawings, Fry Reglet Bullnose Outside Corner as manufactured by Fry Reglet Corporation, shall be installed. Aluminum shall be extruded alloy 6063 T5, clear anodized or chemical conversion coating, unless otherwise specified.

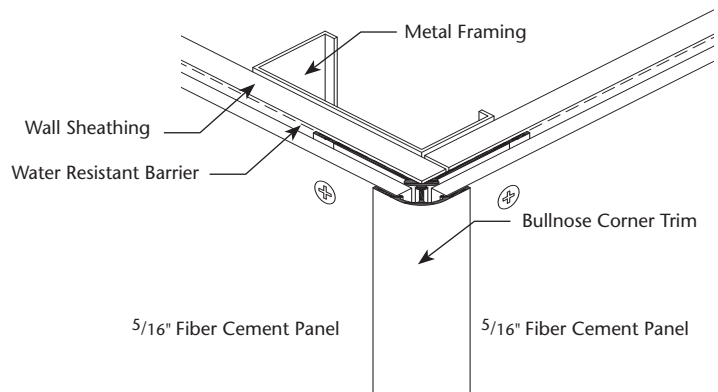
BULLNOSE OUTSIDE CORNER SIZES

DIM.A	NUMBER
NOM. 3/8"	FCP - BULLNOSE

INSTALLATION DETAIL : Cross Section

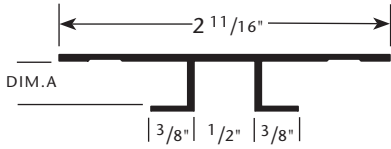


INSTALLATION DETAIL : ISO View



VERTICAL MOLDING TRIM

PRODUCT DETAIL :



USAGE

Fry Reglet Vertical Molding creates an attractive vertical reveal between Fiber Cement Panels. The reveal becomes a design element to enhance building exteriors.

GUIDE SPECIFICATION

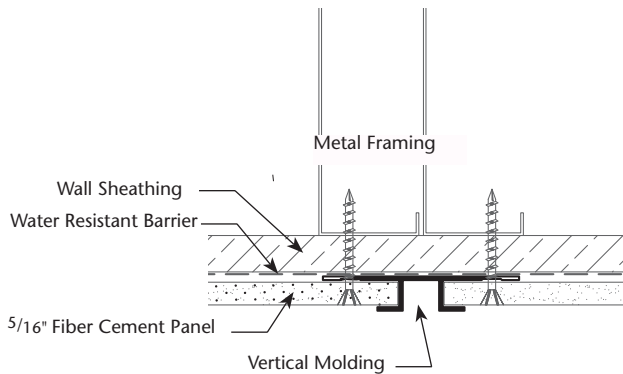
Where indicated on drawings, Fry Reglet Vertical Molding, as manufactured by Fry Reglet Corporation, shall be installed. Aluminum shall be extruded alloy 6063 T5, clear anodized or chemical conversion coating, unless otherwise specified.

NOTE: Use of the Vertical Molding at horizontal joints is not recommended.

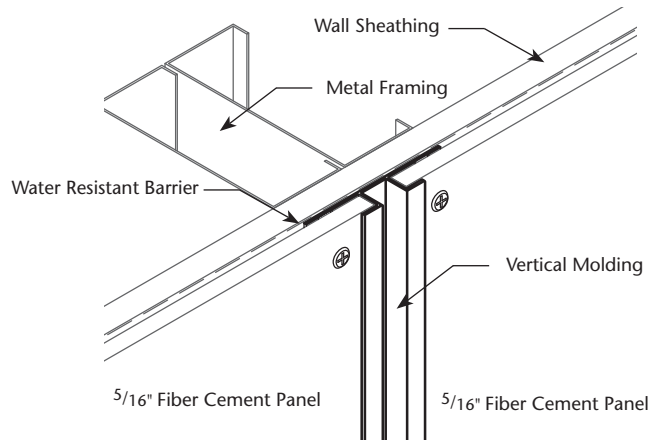
VERTICAL MOLDING SIZES

DIM.A	NUMBER
NOM. 3/8"	FCP - VERTICAL

INSTALLATION DETAIL : Cross Section

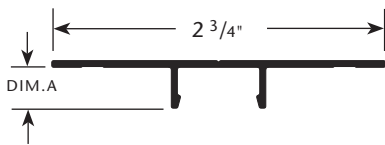


INSTALLATION DETAIL : ISO View



VERTICAL RETAINER

PRODUCT DETAIL :



USAGE

Fry Reglet Vertical Retainer acts as the receiver for vertical insert or for vertical offset. Installs behind panels. Insert and offset trims cover vertical edges of panels.

GUIDE SPECIFICATION

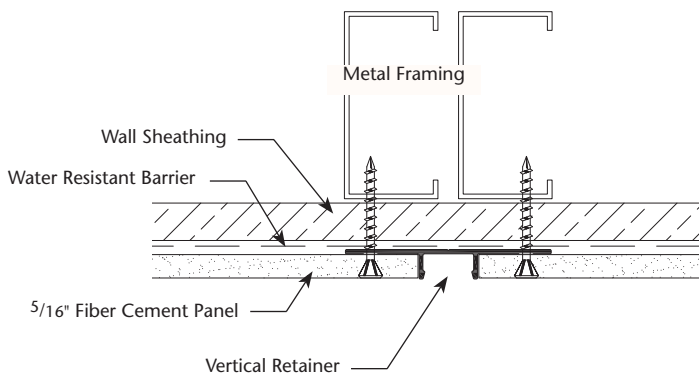
Where indicated on drawings, Fry Reglet Vertical Retainer, as manufactured by Fry Reglet Corporation, shall be installed. Aluminum shall be extruded alloy 6063 T5, clear anodized or chemical conversion coating, unless otherwise specified.

NOTE: Use of the Vertical Retainer at horizontal joints is not recommended.

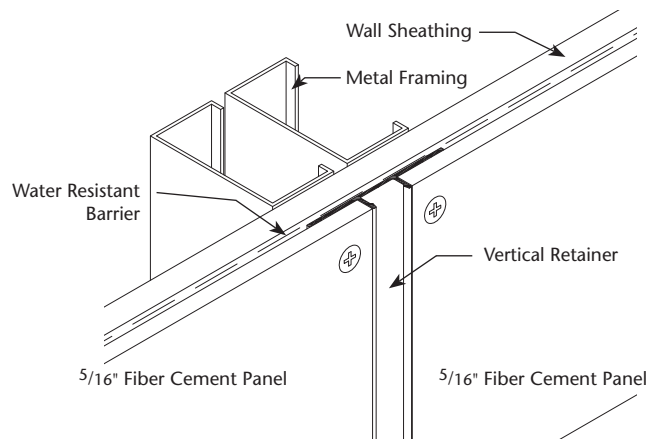
VERTICAL RETAINER SIZES

DIM.A	NUMBER
NOM. 3/8"	FCP - VERT RET

INSTALLATION DETAIL : Cross Section

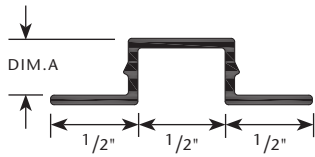


INSTALLATION DETAIL : ISO View



VERTICAL INSERT

PRODUCT DETAIL :



USAGE

Fry Reglet Vertical Insert fits into vertical retainer and covers the vertical edges of panels.

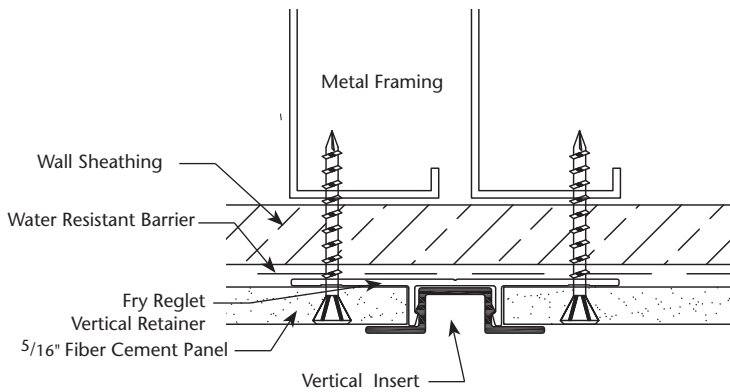
GUIDE SPECIFICATION

Where indicated on drawings, Fry Reglet Vertical Insert, as manufactured by Fry Reglet Corporation, shall be installed. Aluminum shall be extruded alloy 6063 T5, clear anodized or chemical conversion coating, unless otherwise specified.

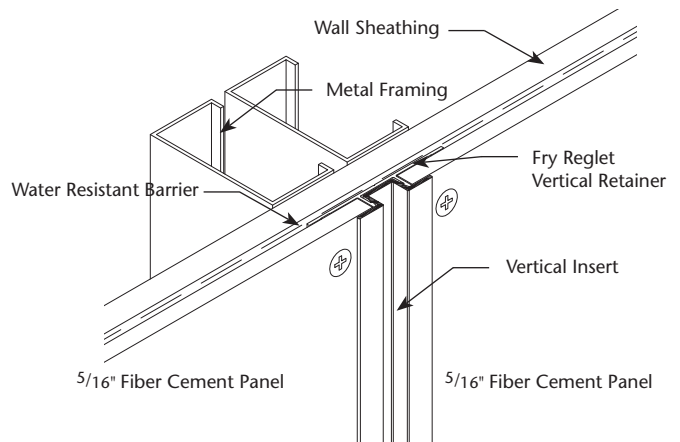
VERTICAL INSERT SIZES

DIM.A	NUMBER
NOM. 3/8"	FCP - VERT INSERT

INSTALLATION DETAIL : Cross Section

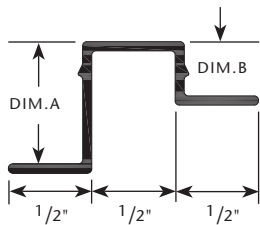


INSTALLATION DETAIL : ISO View



VERTICAL OFFSET

PRODUCT DETAIL :



USAGE

Fry Reglet Vertical Offset fits into vertical retainer and covers the vertical edges of panels. Use at the transition from single to double layer of panels.

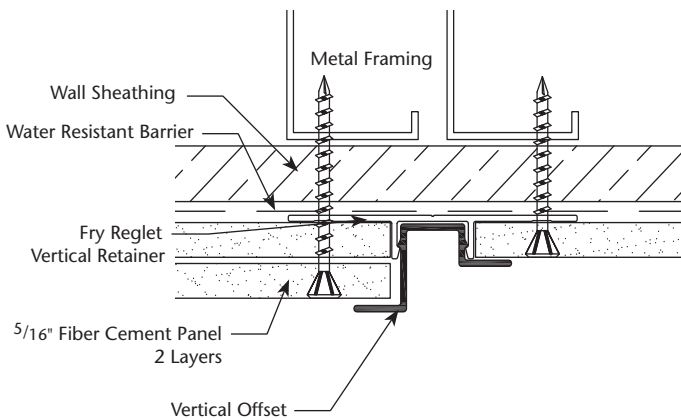
GUIDE SPECIFICATION

Where indicated on drawings, Fry Reglet Vertical Offset, as manufactured by Fry Reglet Corporation, shall be installed. Aluminum shall be extruded alloy 6063 T5, clear anodized or chemical conversion coating, unless otherwise specified.

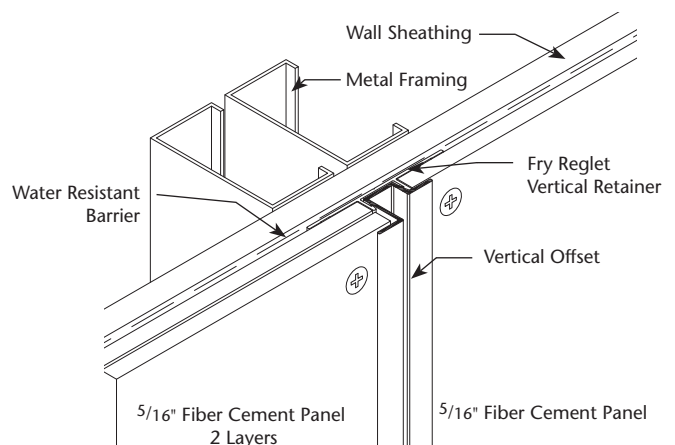
VERTICAL OFFSET SIZES

DIM.A	DIM.B	NUMBER
NOM. 3/4"	NOM. 3/8"	FCP - VERT OFFSET

INSTALLATION DETAIL : Cross Section

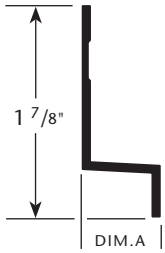


INSTALLATION DETAIL : ISO View



HORIZONTAL TRIM

PRODUCT DETAIL :



USAGE

Fry Reglet Horizontal Trim creates an attractive reveal between horizontal ends of Fiber Cement Panel. Profile shape channels moisture out and away from sheathing and water resistance barrier.

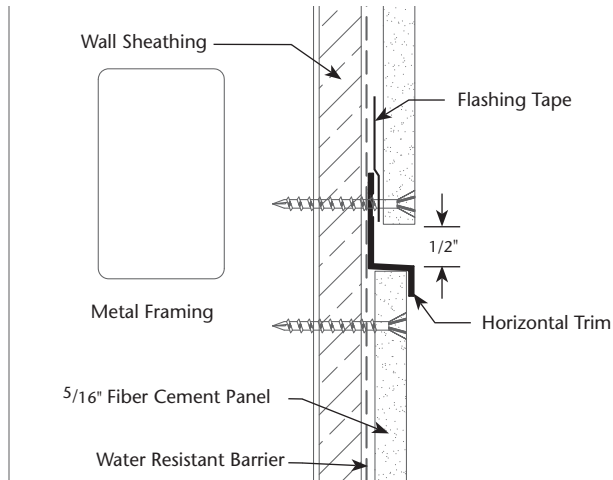
GUIDE SPECIFICATION

Where indicated on drawings, Fry Reglet Horizontal Trim, as manufactured by Fry Reglet Corporation, shall be installed. Aluminum shall be extruded alloy 6063 T5, clear anodized or chemical conversion coating, unless otherwise specified.

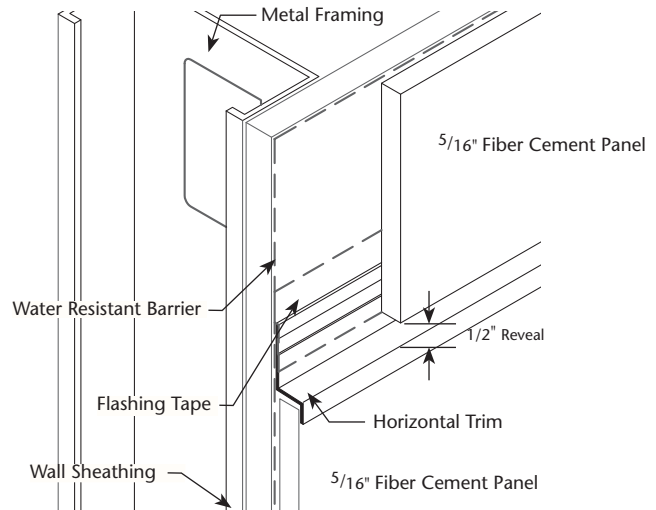
HORIZONTAL TRIM SIZES

DIM. A	NUMBER
NOM. 1 7/8"	FCP - HORIZONTAL

INSTALLATION DETAIL : Cross Section

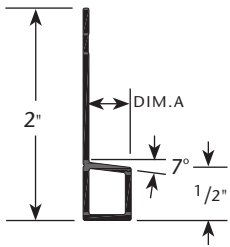


INSTALLATION DETAIL : ISO View



BASE TRIM

PRODUCT DETAIL :



USAGE

Fry Reglet Base Trim creates a continuous horizontal ledge at the bottom of the Fiber Cement Panels. Covers the horizontal edges at the bottom of the panel and is angled to allow for runoff.

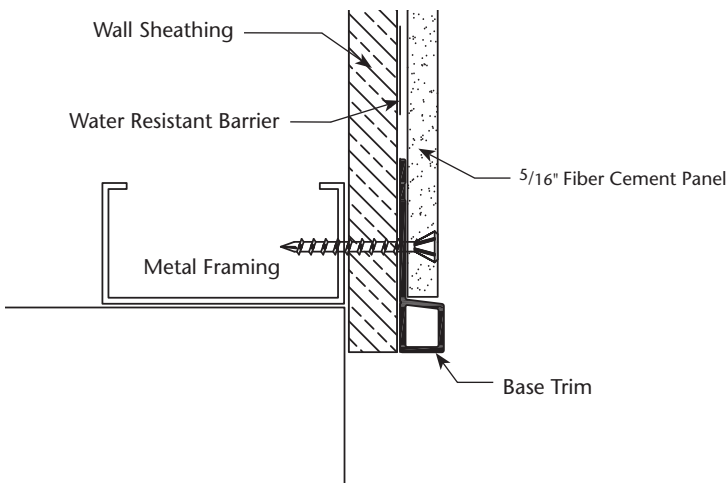
GUIDE SPECIFICATION

Where indicated on drawings, Fry Reglet Base Trim, as manufactured by Fry Reglet Corporation, shall be installed. Aluminum shall be extruded alloy 6063 T5, clear anodized or chemical conversion coating, unless otherwise specified.

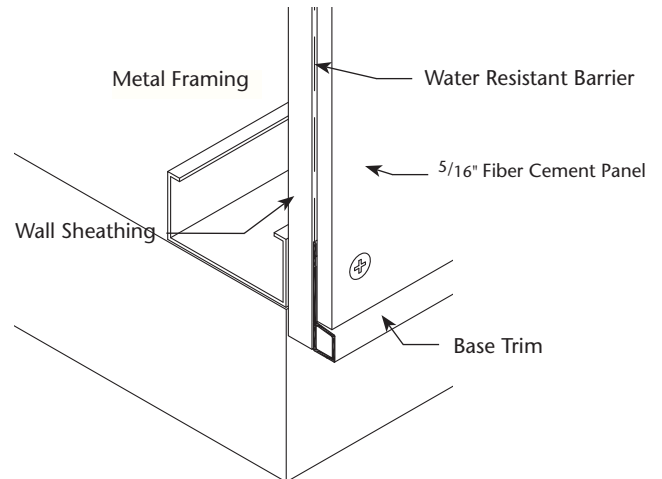
BASE TRIM SIZES

LENGTH	NUMBER
NOM. 3/8"	FCP - BASE

INSTALLATION DETAIL : Cross Section

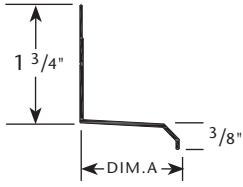


INSTALLATION DETAIL : ISO View



DRIP CAP

PRODUCT DETAIL :



USAGE

Fry Reglet Drip Cap creates an attractive reveal between horizontal ends of 5/16" Fiber Cement Panels and the tops of doors and windows. Profile shape channels moisture out and away from sheathing and water resistance barrier.

GUIDE SPECIFICATION

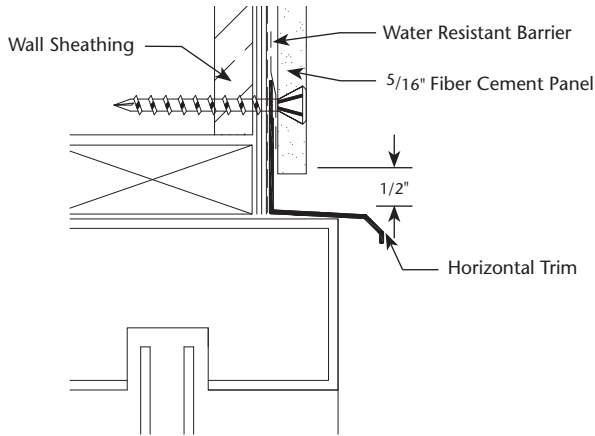
Where indicated on drawings, Fry Reglet Drip Cap, as manufactured by Fry Reglet Corporation, shall be installed. Aluminum shall be extruded alloy 6063 T5, clear anodized or chemical conversion coating, unless otherwise specified.

DRIP CAP SIZES

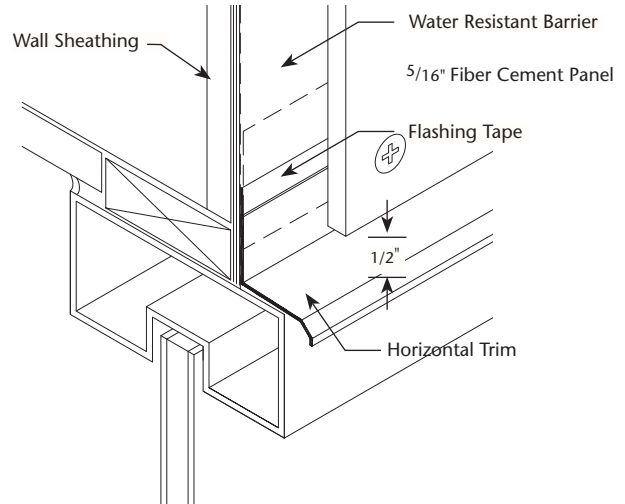
DIM. A	NUMBER
1 1/2"	FCP - DRIP CAP

NOTE: DRIP CAP SUPPLIED IN 12' LENGTHS

INSTALLATION DETAIL : Cross Section

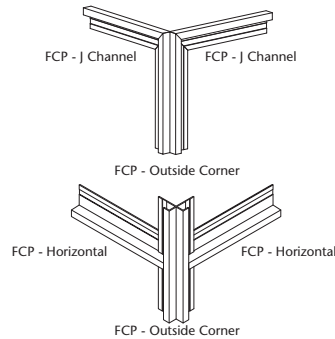
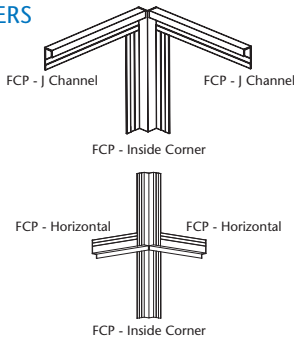


INSTALLATION DETAIL : ISO View

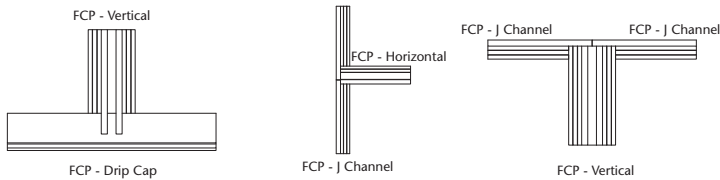


TYPICAL INTERSECTIONS

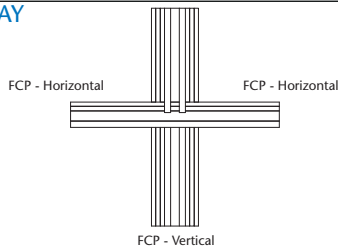
CORNERS



3-WAY



4-WAY



Factory Fabricated Intersections are available to connect horizontal and vertical joints of trims of the same or different types. Intersections are available in "T", "L", and "+" shapes.

The mitered joints are welded, and the 6" legs are measured from center point of the intersection.

Corner pieces can be manufactured for both inside outside conditions. Custom leg lengths are available.

All intersections are factory fabricated ensuring precision joinery and consistent quality.

SECTION 09 21 00
5/16" FIBER CEMENT PANEL ACCESSORIES

PART 1 - GENERAL

1.1 SUMMARY

- A. Related work specified elsewhere includes:
1. Rough carpentry.
 2. Sheathing.
 3. 5/16" Fiber Cement Panel systems.
 4. Painting.

1.2 SUBMITTALS

- A. Product data: Indicate product description, including compliance with specified requirements and installation requirements. Mark manufacturer's brochures to include only those products proposed for use.

1.3 QUALITY ASSURANCE

- A. Applicable standards; standards of the following, as referenced herein:
1. Aluminum Association (AA).
 2. American Society for Testing and Materials (ASTM).
- B. ** Allowable tolerances in horizontal planes:
1. Variation from level: +1/8" in 12'-0".
- C. ** Allowable tolerances in framed vertical construction.
1. Position: +1/4" maximum variation from design position.
 2. Alignment: 1/8" in 8'-0"; 1/4" maximum in any continuous wall, line or surface.

1.4 DELIVERY, STORAGE AND HANDLING

- A. Storage:
1. Stack accessories off floor on pallets or similar platforms providing continuous support for accessories to prevent sagging. Stack accessories so that long lengths are not over short lengths.
 2. Handle materials to prevent damage to surfaces, edges and ends of aluminum trims. Reject and remove damaged material from site.

PART 2 - PRODUCTS

2.1 MANUFACTURER:

- A. Acceptable manufacturer; subject to compliance with specified requirements:
- Fry Reglet Corporation.
1377 Stonefield Court.
Alpharetta, GA 30004
Phone 800-237-9773 Fax 800-200-4379

2.2 MATERIALS AND FINISH:

SELECT ONE OF THE FOLLOWING FINISH OPTIONS.

- A. Anodized finish:
1. Architectural 200R1 light etch (AA-M32c10A21), clear color.
 2. Thickness of anodic coating shall be tested in accord with ASTM B244-97 and sealed to pass modified dye stain test ASTM B136-84(1998).

** OR **

SELECT THE FOLLOWING FINISH WHEN FIELD PRIMING AND PAINTING IS PLANNED.

- B. Chemical conversion coat finish: Treatment of aluminum moldings shall conform with ASTM ND1730-67(2003).

OR

- C. Factory applied powder paint finish:

2.3 PROFILES

EDIT THE FOLLOWING PARAGRAPHS BASED ON PROJECT REQUIREMENTS.

- A. J Channel:
1. Acceptable product: Number FCP – J Channel
 2. Characteristics: .
 - a. Description: J Channel provides a termination designed to cover the edge of 5/16" Fiber cement panels at intersections and at sides of door and window openings.
 - b. Material: 6063 T5 Extruded aluminum.
 - c. Dimensions: As indicated on drawings.
- B. Inside Corner:
1. Acceptable product: Number FCP – Inside Corner
 2. Characteristics:
 - a. Description: Inside corner creates a square and true termination point for 5/16" fiber cement panels at an inside corner.
 - b. Material: 6063 T5 Extruded aluminum.
 - c. Dimensions: As indicated on drawings.
- C. Outside Corner:
1. Acceptable product: Number FCP – Outside Corner
 2. Characteristics:
 - a. Description: Outside corner creates a straight and true, abuse resistant corner with exposed flanges that cover the vertical ends of 5/16" fiber cement panels.
 - b. Material: 6063 T5 Extruded aluminum.
 - c. Dimensions: As indicated on drawings.
- D. Bullnose Outside Corner:
1. Acceptable product: Number FCP – Bullnose
 2. Characteristics:
 - a. Description: Bullnose outside corner creates a straight and true, abuse resistant rounded corner with exposed flanges that cover the vertical ends of 5/16" fiber cement panels.
 - b. Material: 6063 T5 Extruded aluminum.
 - c. Dimensions: As indicated on drawings.
- E. Vertical Molding:
1. Acceptable product: Number FCP - Vertical
 2. Characteristics:
 - a. Description: Vertical molding creates an attractive vertical reveal between 5/16"

- a. fiber cement panels.
- b. Material: 6063 T5 Extruded aluminum.
- c. Dimensions: As indicated on drawings

F. Vertical Retainer:

1. Acceptable product: Number FCP – Vert Ret
2. Characteristics:
 - a. Description: Vertical retainer acts as a receiver for Vertical Insert or Vertical Offset. *Vertical retainer cannot be used alone.* When used with Vertical Insert or Vertical Offset creates an attractive vertical reveal between 5/16" fiber cement panels.
 - b. Material: 6063 T5 Extruded aluminum.
 - c. Dimensions: As indicated on drawings.

G. Vertical Insert:

1. Acceptable product: Number FCP – Vert Insert
2. Characteristics:
 - a. Description: Vertical insert fits into Vertical Retainer and creates an attractive vertical reveal between 5/16" fiber cement panels *Vertical insert must be used with Vertical retainer.*
 - b. Material: 6063 T5 Extruded aluminum.
 - c. Dimensions: As indicated on drawings.

H. Vertical Offset:

1. Acceptable product: Number FCP – Vert Offset
2. Characteristics:
 - a. Description: Vertical offset fits into Vertical Retainer and creates an attractive vertical reveal and transition between a single layer of 5/16" fiber cement panels and a double layer of 5/16" fiber cement panels. *Vertical offset must be used with Vertical retainer.*
 - b. Material: 6063 T5 Extruded aluminum.
 - c. Dimensions: As indicated on drawings.

I. Horizontal Trim:

1. Acceptable product: FCP – Horizontal
2. Characteristics:
 - a. Description: Horizontal trim creates an attractive reveal between horizontal ends of 5/16" fiber cement panels.
 - b. Material: 6063 T5 Extruded aluminum.
 - c. Dimensions: As indicated on drawings.

J. Base Trim:

1. Acceptable product: FCP – Base
2. Characteristics:
 - a. Description: Base trim provides an exposed, flush termination at the bottom horizontal edges of 5/16" fiber cement panels.
 - b. Material: 6063 T5 Extruded aluminum.
 - c. Dimensions: As indicated on drawings.

K. Drip Cap:

1. Acceptable product: FCP – Drip Cap
2. Characteristics:
 - a. Description: Drip cap creates an attractive reveal between the horizontal ends of 5/16" fiber cement panels and the tops of doors and windows. Profile shape channels moisture out and away from sheathing and water resistant barrier.
 - b. Material: 6063 T5 Extruded aluminum.
 - c. Dimensions: As indicated on drawings.

PART 3 - EXECUTION

3.1 INSTALLATION:

- A. 5/16" Fiber Cement Panels: Install panel accessories in accordance with panel manufacturer's supplemental installation details for commercial applications and as follows:
1. J Channel: Install at exposed edge of 5/16" fiber cement panels at sides of door and window openings, and at intersections with other materials.
 2. Inside and outside corner trim, bullnose corner trim: Install at designated corners.
 3. Vertical molding: Install between 5/16" fiber cement panels as indicated on drawings.
 4. Vertical retainer: Install between 5/16" fiber cement panels as receiver for Vertical Insert or Vertical Offset as indicated on drawings.
 5. Vertical Insert: Install between single layers of 5/16" fiber cement panels as indicated on drawings. *Must be used with Vertical Retainer.*
 6. Vertical Offset: Install as a transition between a single layer and a double layer of 5/16" fiber cement panels. *Must be used with Vertical Retainer.*
 7. Horizontal Trim: Install at horizontal joints between 5/16" fiber cement panels as indicated on drawings.
 8. Base Trim: Install at the horizontal base of 5/16" fiber cement panels as indicated on drawings.

3.2 PROTECTION:

- A. Protect accessories from damage until date of Substantial Completion. Replace accessories which become damaged.

END OF SECTION