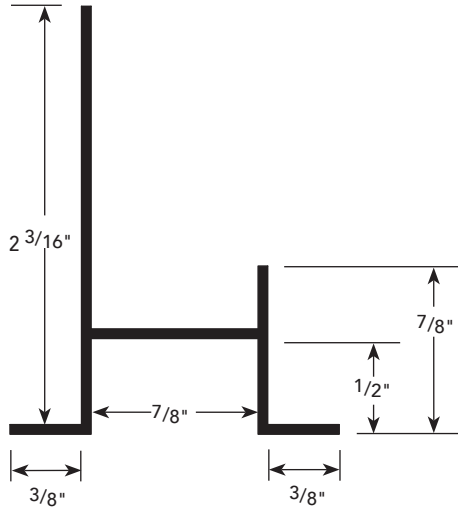


PRODUCT DETAIL



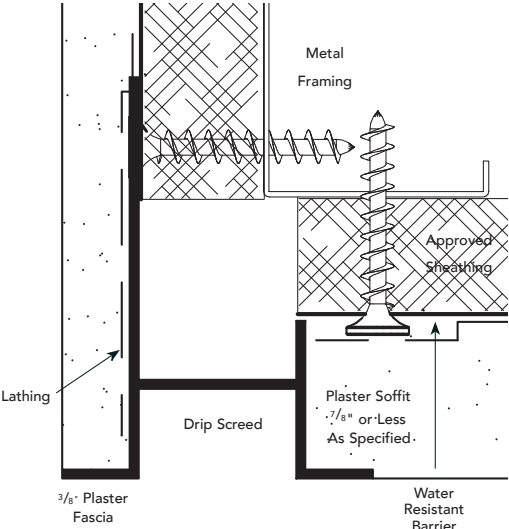
USAGE

Fry Reglet Drip Screed neatly joins soffit and fascia while providing a drip joint to prevent water stains on soffit and vertical wall of building. Can be vented if air movement is required. Accommodates a 3/8" plaster fascia and soffit thickness of 7/8" or less (by trimming vertical leg on soffit side of molding).

GUIDE SPECIFICATION

Where indicated on drawings, Fry Reglet Drip Screed, as manufactured by Fry Reglet Corporation, shall be installed. Aluminum shall be extruded alloy 6063 T5, with chemical conversion coating, clear anodized or other specified finish. Refer to finish section.

INSTALLATION DETAIL / Cross Section



PC.5

3/8" FASCIA DRIP SCREED

SIZES

REVEAL WIDTH	NUMBER	
	NON-VENTED	VENTED
3/4"	DS-375-875	DS-375-V-875