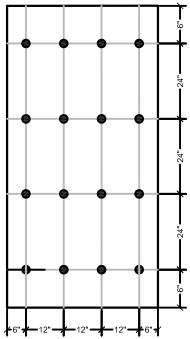
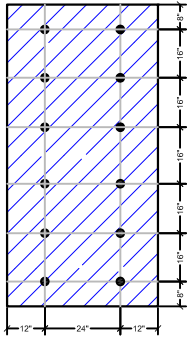


**(A) CORNER**



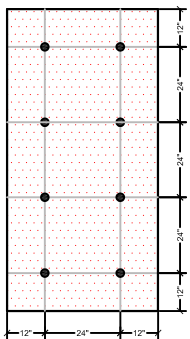
16 FASTENERS PER BOARD

**(B) PERIMETER**





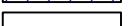

12 FASTENERS PER BOARD

**(C) FIELD**



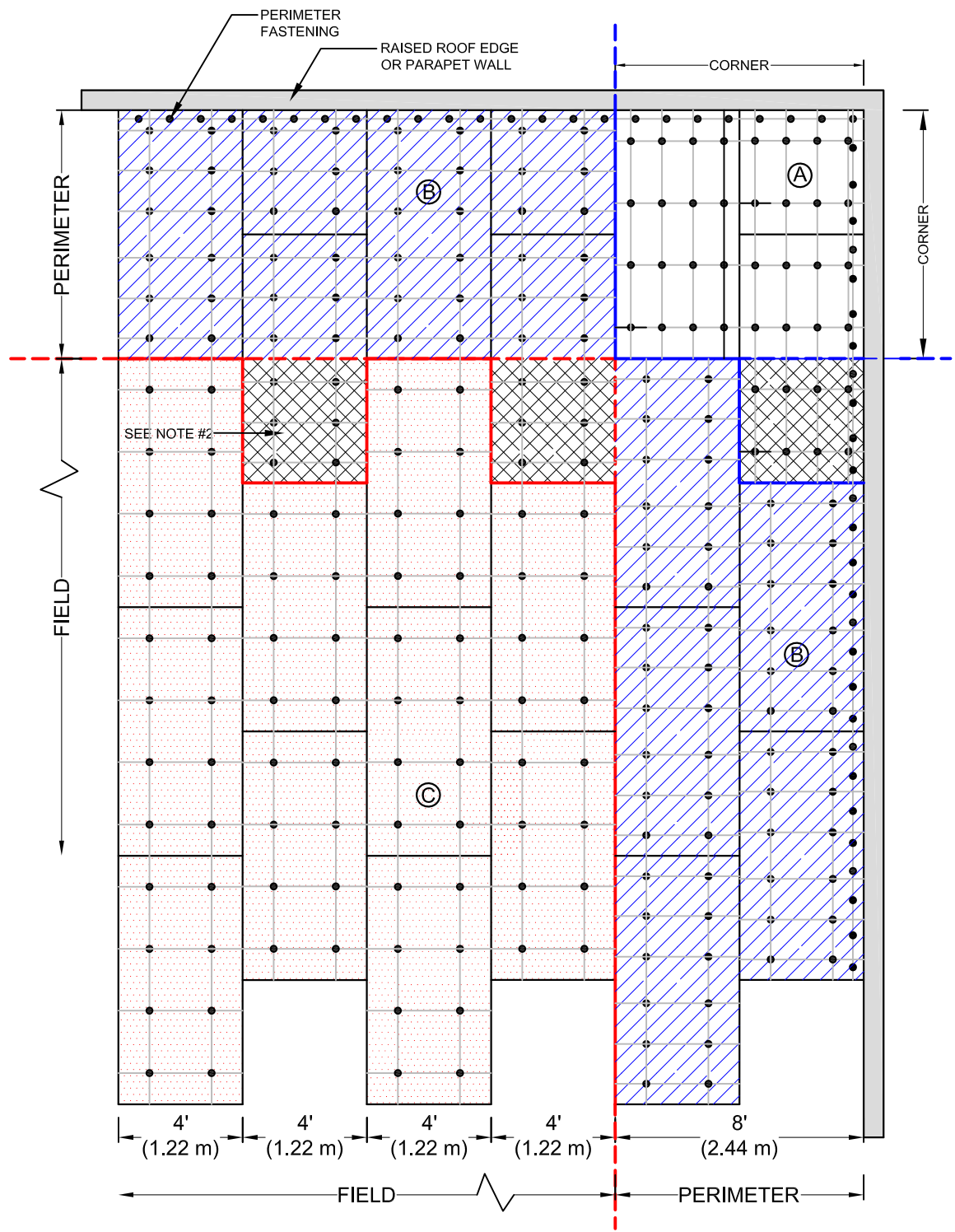
8 FASTENERS PER BOARD

**ZONE LEGEND**

-  FIELD
-  PERIMETER
-  CORNER
-  TRANSITION

**NOTE:**

1. SEE EVERGUARD® SYSTEM GUIDELINES IN SPEC MANUAL TO DETERMINE PERIMETER AND PENETRATION FASTENER SPACING FOR VARIOUS DECK TYPES AND WIND UPLIFT REQUIREMENTS.
2. IF A PORTION OF A BOARD EXTENDS INTO ANOTHER ZONE, IT MUST DEFER TO THE ZONE THE GREATER FASTENING PATTERN.



**EverGuard**  
SINGLE-PLY ROOFING SYSTEMS  
FIELD OF ROOF SERIES

DRAWING #  
**108**

**RHINO BOND FASTENING ZONES & LOCATIONS**

THIS DETAIL APPLIES TO:  
**RHINO BOND® ATTACHMENT SYSTEMS**

1 Campus Drive  
Parsippany, NJ 07054  
www.gaf.com

SCALE  
N.T.S.

OVER APPROVED WOOD DECKS

REVISION DATE  
2-19-16