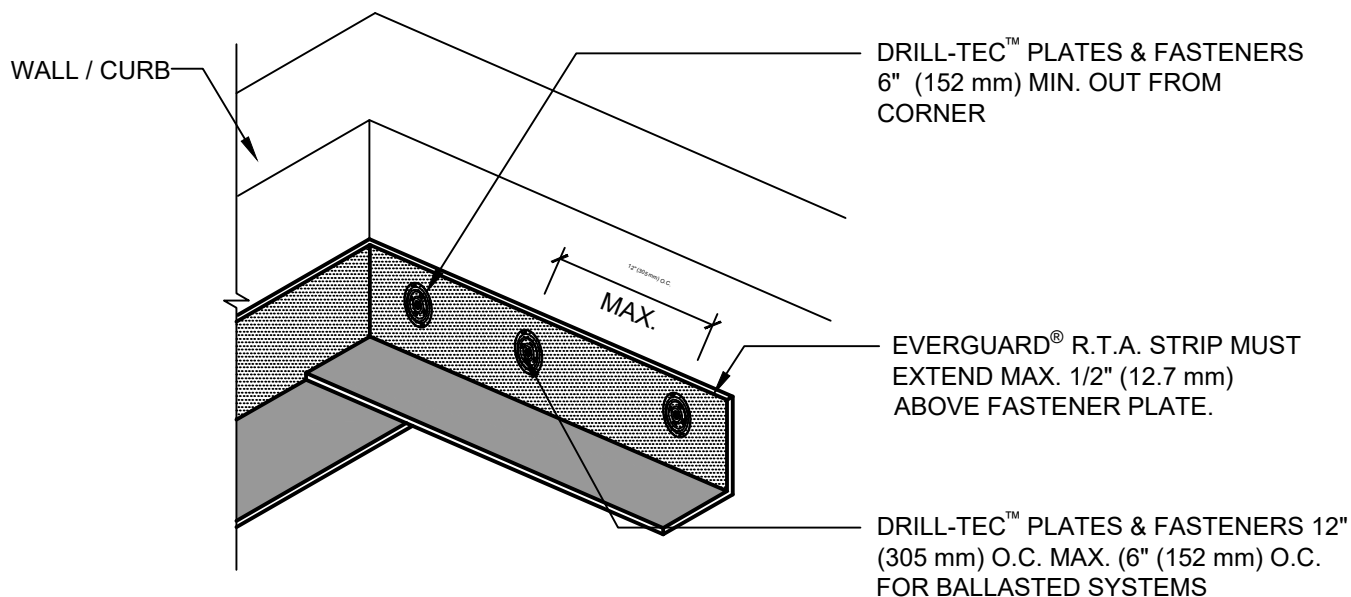
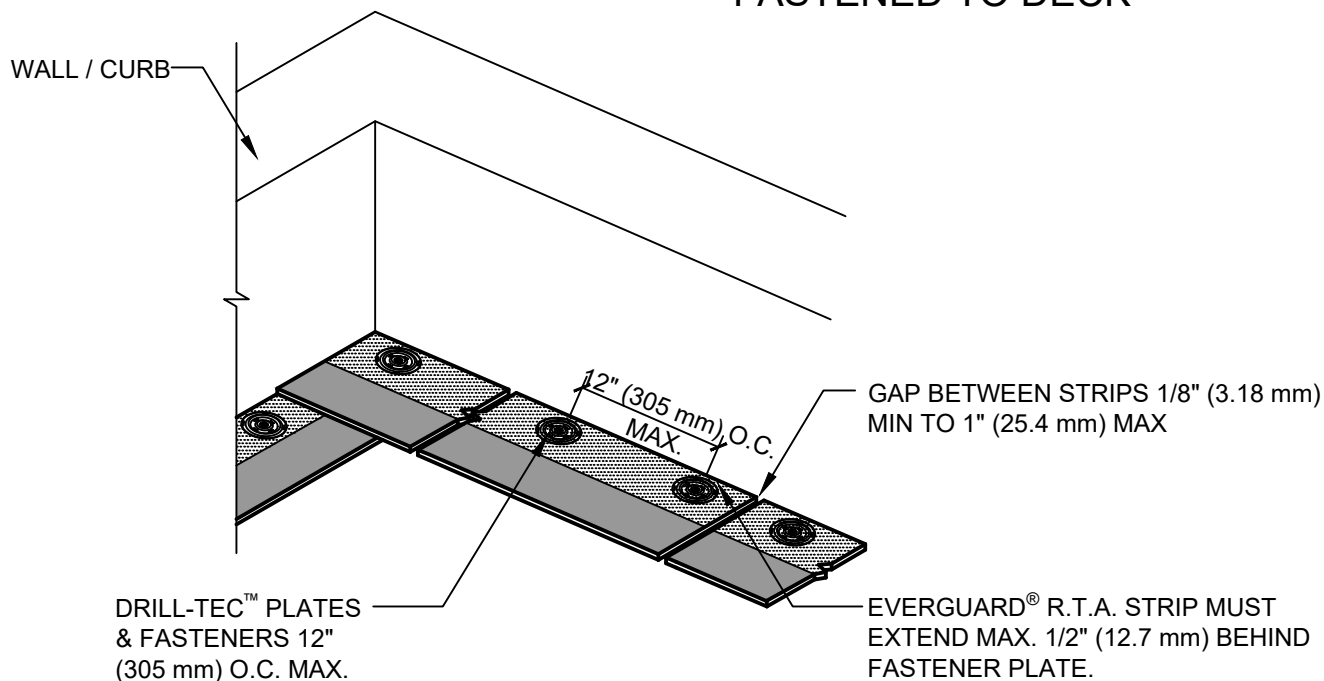


FASTENED TO WALL / CURB



FASTENED TO DECK



NOTE:

1. THIS DETAIL IS NOT TO BE USED FOR EVERGUARD® PVC MEMBRANES OR MECHANICALLY ATTACHED SYSTEMS.
2. R.T.A. STRIP MAY BE FIELD FABRICATED OUT OF EVERGUARD® FREEDOM MEMBRANE (REMOVE FILM BEFORE INSTALLING WALL FLASHING SHEET).
3. COMMON FASTENER ANCHORING THE OVERLAP OF THE TWO STRIPS IN THE CORNER.

GAF

R.T.A. STRIP - INSIDE CORNER REINFORCEMENT

DRAWING #
326A

THIS DETAIL APPLIES TO:
ADHERED SYSTEMS
BALLASTED SYSTEMS
SELF-ADHERED SYSTEMS

ISSUE / REVISION DATE
8/24/20

SCALE
N.T.S.

LEGEND