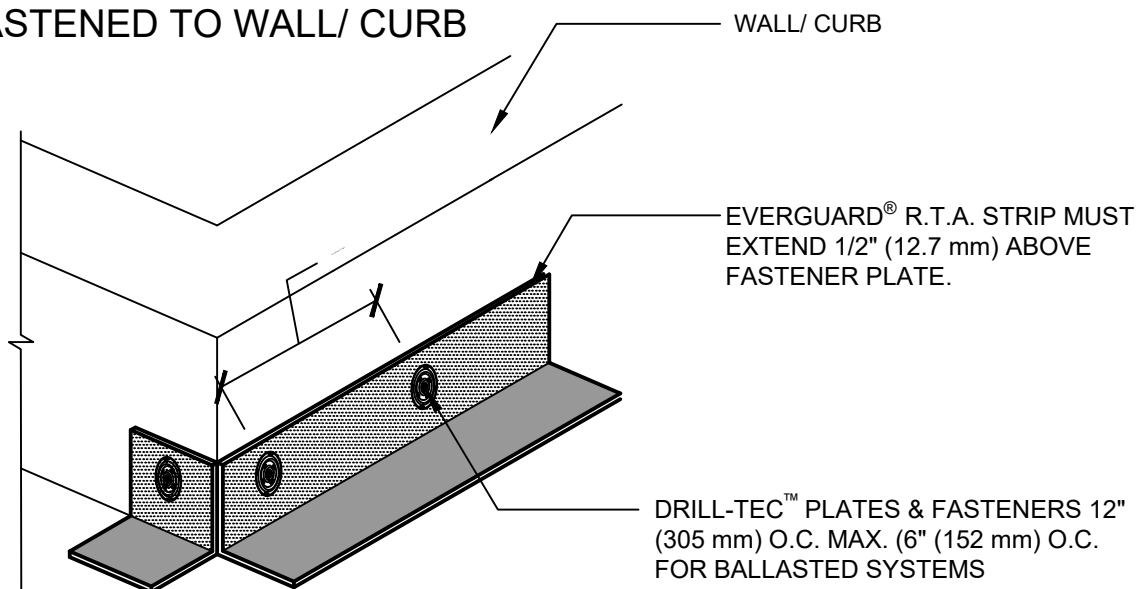
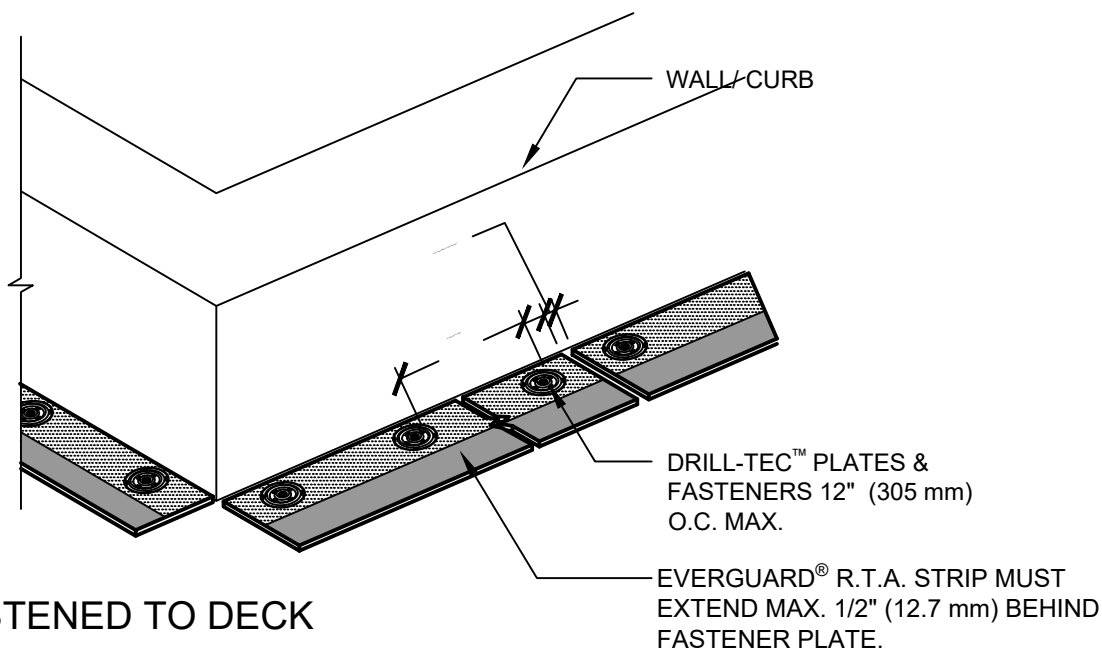


## FASTENED TO WALL/ CURB



## FASTENED TO DECK



### NOTE:

1. THIS DETAIL IS NOT TO BE USED FOR EVERGUARD® PVC MEMBRANES OR MECHANICALLY ATTACHED SYSTEMS.
2. R.T.A. STRIP MAY BE FIELD FABRICATED OUT OF EVERGUARD® FREEDOM MEMBRANE (REMOVE FILM BEFORE INSTALLING WALL FLASHING SHEET).
3. COMMON FASTENER ANCHORING THE OVERLAP OF THE TWO STRIPS IN THE CORNER.

**GAF**

### R.T.A. STRIP - OUTSIDE CORNER REINFORCEMENT

DRAWING #  
**326B**

THIS DETAIL APPLIES TO:  
ADHERED SYSTEMS  
BALLASTED SYSTEMS  
SELF-ADHERED SYSTEMS

ISSUE / REVISION DATE  
**8/24/20**

SCALE  
N.T.S.

### LEGEND