

# **Perimeter Edge Metal Brochure (COMGN296)**

Updated: 7/18



*Quality You Can Trust...From  
North America's Largest Roofing Manufacturer!™*



Quality You Can  
Trust... From  
North America's  
Largest Roofing  
Manufacturer!™

# PERIMETER EDGE METAL

[gaf.com](http://gaf.com)

Beautify and help save  
on labor costs by using  
consistent products that  
consistently perform





# GAF Perimeter Edge Metal Products



For additional product information, visit [www.gaf.com/EdgeMetal](http://www.gaf.com/EdgeMetal)

## Perimeter Edge Metal

Perimeter edge metal is not just there to finish off the edge of a building and make it look nice. It plays a critical role in the whole building design as the termination and transition between the roof and other building components. A pre-fabricated edge metal system provides consistency, reliable performance, and an aesthetically appealing design – not to mention it helps reduce installation time and labor costs.

GAF Perimeter Edge Metal offers a full lineup of pre-fabricated coping, fascia, drip edge, gutter, downspout, and trims in both steel and aluminum in a variety of Kynar®-coated\* colors.

All perimeter edge metal products are tested and approved per ANSI/SPRI/FM 4435/ES-1 since they are the first line of protection in a wind event.

GAF Perimeter Edge Metal products come with pre-punched slotted holes and the appropriate fasteners for strong cleat and rail attachment to reduce the risk of leaks. They also allow for thermal movement and the use of high-torque screws vs. nails.

### Features and Benefits

- Edge acts as an effective termination and transition between the roof and other building components.
- It's a roof's first line of defense against wind and water infiltration.
- Helps save on labor because there's no crimping required at the roof edge.
- Folded, metal-locked, or welded, all corners and accessories come pre-manufactured and ready to install for a clean finished look.
- Easy snap-on design allows for quick, accurate installation.
- Adds an aesthetic feature to the building's exterior.
- Included fasteners and pre-punched holes for strong cleat/rail attachment without guessing.
- Exceptional strength and performance since it's made of formed galvanized steel retainer or a formed aluminum retainer.
- Slotted holes allow for thermal movement and the use of high-torque screws vs. nails.
- No caulking/sealants to apply or maintain makes for a fast installation.
- Does not require field notching and can be installed in either direction.
- Allows for expansion and contraction — to help prevent oil canning.
- Clean, professional finished look enhances the roof system.



Shown above: EverGuard® Standard EZ Fascia EX

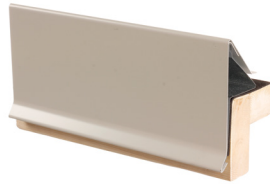
\*Kynar® is a registered trademark of Arkema, Inc.



# GAF EverGuard® Fascia & M-Weld™ Fascia Products

## EverGuard® Snap-on Fascia

Economical solution for single-ply membranes less than 60 mils thick



### Continuous Galvanized Spring Clip

- Installs quickly with a spring clip (vs. static)
- No need for field crimping

### Concealed Splice Plate

- Smooth/unbroken appearance

### Cover is Not Fastened or Sandwiched Into Membrane

- Free floating, helps prevent oil canning

### Snap-On Design/No Exposed Fasteners

- Clean lines
- Helps reduce installation time and labor costs

### Face Sizes

- Sizes range from 4¾" to 12" (120.65 mm – 304.8 mm)
- Tested per ANSI/SPRI/FM 4435/ES-1

## EverGuard® Standard Drip Edge



EverGuard® Standard Drip Edge is a two-part assembly with a continuous cleat and a formed cover for low-slope roof systems. The EverGuard® Standard Drip Edge is formed aluminum in .040" (1.00 mm), .050" (1.25 mm), or 24-gauge Kynar 500®\* coated galvanized steel. Cleat is 20-gauge galvanized steel with pre-punched slotted holes for fasteners at 12" (304.8 mm) on center in 10' (3.05 m) standard lengths.

- Tested per ANSI/SPRI/FM 4435/ES-1
- High-quality prefinished Kynar 500® finish
- Economical prefabricated metal edge
- Pre-punched selflocating cleat for proper attachment
- Fasteners included
- For use on adhered or mechanically attached single-ply, modified, and BUR roof systems
- Heatweldable – TPO and PVC coated options available

\*Kynar® and Kynar 500® are registered trademarks of Arkema, Inc.

## M-Weld™ Gravel Stop MB Fascia Type B



### M-BED Technology

- Large metal perforations permit membrane-to-membrane adhesion
- Staggered perforation pattern with over 50% of free area

### Slotted Nail Holes

- Easy to install
- Continuous anchor cleat
- Tested per ANSI/SPRI/FM 4435/ES-1

## M-Weld™ Gravel Stop MB Fascia Type G



### M-BED Technology

- Large metal perforations permit membrane-to-membrane adhesion
- Staggered perforation pattern with over 50% of free area

### Slotted Nail Holes

- Easy to install
- Continuous anchor cleat
- Tested per ANSI/SPRI/FM 4435/ES-1

## M-Weld™ NP Fascia



### Galvanized Steel Water Dam

- Can be installed first to dry in the roof membrane
- Welded aluminum corners available

### No Penetrating Fasteners

- Free-floating aluminum fascia
- 20-gauge retainer designed with spring top to allow for flexibility
- Attached using 1½" (38.1 mm) stainless steel ring shank nails
- Concealed splice plates

### Standard Sizes

- Sizes range from 4¾" to 12" (120.65 mm – 304.8 mm)
- Tested per ANSI/SPRI/FM 4435/ES-1



These products come in 4 configurations:

- EverGuard® EZ Fascia\*
- EverGuard® Standard EZ Fascia EX\*
- EverGuard® EZ Fascia AR\*
- M-Weld™ EZ Fascia EX\*

**GAF** **EVERGUARD**  
**M-WELD**



*Made of formed galvanized steel, formed aluminum, or heavy-duty extruded aluminum for use with single-ply, Mod Bit, or BUR roofing systems.*

## EverGuard® EZ Fascia EverGuard® EZ Fascia AR

### Retainer Base Plate Clamps Membrane like a Termination Bar

- Helps prevent wind and water from blowing under the membrane
- Self-locating with pre-punched slotted holes that allow for expansion and contraction
- Tested per ANSI/SPRI/FM 4435/ES-1

### Standoff Fascia with Concealed Drip

- Smooth appearance while directing water away from the wall

### Snap-On Design

- Helps reduce installation time and labor costs
- Face size ranges from 3.25" – 12.75" (83 mm – 324 mm)

## EverGuard® Standard EZ Fascia EX and M-Weld™ EZ Fascia EX

### Extruded Retainer (EX) Clamps Membrane like a Termination Bar

- Tested per ANSI/SPRI/FM 4435/ES-1
- Helps prevent wind and water from blowing under the membrane
- Extrusion can be shipped separately to dry in the roof membrane weeks before color/gauge is selected
- Universal fastener (wood, metal, masonry)

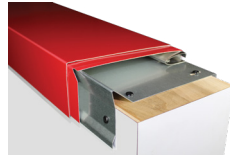
### Standard Sizes

- 3.75" (95.3 mm)
- 5.25" (133.4 mm)
- 6.75" (171.5 mm)
- 8.25" (209.6 mm)
- 11.25" (285.8 mm) (EverGuard® Standard EZ Fascia EX)

\*All GAF perimeter edge metal products are available in either steel or aluminum

# GAF M-Weld™ Coping & Accessory Products

## M-Weld™ Snap-On Coping/Coping Plus



### Raised Wings in Splice Plate

- Contains a metal clip that functions as a gutter to help channel water back onto the roof
- Helps channel water to roof, eliminating the need for caulking
- Internal concealed splice in the same color as the cap

### Concealed Fasteners, Splices, and Clips

- Smooth, unbroken appearance
- Color-matched sight line
- Universal fastener (wood, metal, cement)

### Free-Floating Design

- Allows for expansion and contraction

### Wall Sizes

- 4" to 32" (102 mm – 813 mm)
- Pre-Punched Holes/Snap-On Design
- Tested per ANSI/SPRI/FM 4435/ES-1
- 20-gauge clip designed to improve contractor productivity
- Snap-On Coping Plus comes with heavy 16-gauge clip for wind resistance
- True welded radius, matching corners, end caps, and other accessories are factory fabricated

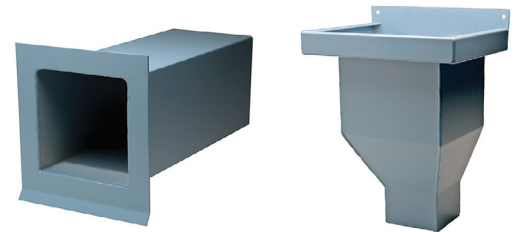
## Edge Metal Accessories



GAF Gutter is custom sized to meet your special requirements. Designed with internal straps for smooth, clean lines and easy installation. External hangers and high-wind gutters are optional.

Conductor Heads and Scuppers are factory welded from .050" (1.27 mm) or .063" (1.60 mm) aluminum and in your choice of finish.

- Available in steel and aluminum
- FM approved



## Factory-Fabricated Corners & Accessories

Whether folded, metalocked, or welded, GAF Edge Corners and Accessories come premanufactured and ready to install for a clean finished look.

All GAF Perimeter Edge Metal Products Code Approved



- Refer to FM approvals RoofNav for actual assemblies



For additional product information, visit [www.gaf.com/EdgeMetal](http://www.gaf.com/EdgeMetal)

# GAF Perimeter Edge Metal Lineup



GAF Perimeter Lineup		Cap Material/Gauge	Clip Gauge	Clip Length/Spacing	Application
FASCIA	EverGuard® EZ Fascia	Galv. Steel (22–24 ga.), Aluminum (0.040–0.080), Zinc	20 ga.	120" (3.05 m)	Single-Ply
	EverGuard® EZ Fascia AR	Galv. Steel (22–24 ga.), Aluminum (0.040–0.080), Zinc	0.05	120" (3.05 m)	Single-Ply
	EverGuard® Standard EZ Fascia EX	Galv. Steel (22–24 ga.), Aluminum (0.040–0.080)	EXT.	120" (3.05 m)	Single-Ply
	M-Weld™ EZ Fascia EX	Galv. Steel (22–24 ga.), Aluminum (0.040–0.080)	EXT.	120" (3.05 m)	Single-Ply/ Mod Bit/BUR
	M-Weld™ NP Fascia	Galv. Steel (22–24 ga.), Aluminum (0.040–0.080)	20 ga.	120" (3.05 m)	Single-Ply/ Mod Bit/BUR
	EverGuard® Snap-On Fascia	Galv. Steel (22–24 ga.), Aluminum (0.040–0.080)	22 ga., 24 ga.	120" (3.05 m)	Single-Ply
	M-Weld™ Gravel Stop MB Fascia Type B	Galv. Steel (22–24 ga.), Aluminum (0.040–0.080)	24 ga.	120" (3.05 m)	Mod Bit/BUR
	M-Weld™ Gravel Stop MB Fascia Type G	Galv. Steel (22–24 ga.), Aluminum (0.040–0.080)	24 ga.	120" (3.05 m)	Mod Bit/BUR
	EverGuard® Standard Gravel Stop Fascia	Galv. Steel (22–24 ga.), Aluminum (0.040–0.080)	24 ga.	120" (3.05 m)	Single-Ply
	EverGuard® Standard Drip Edge Fascia	Galv. Steel (22–24 ga.), Aluminum (0.040–0.080)	20 ga.	120" (3.05 m)	Single-Ply
	EverGuard® Extender	Galv. Steel (22–24 ga.), Aluminum (0.040–0.080)	24 ga.	120" (3.05 m)	Single-Ply
	EverGuard® Extender With Offset	Galv. Steel (22–24 ga.), Aluminum (0.040–0.080)	24 ga.	120" (3.05 m)	Single-Ply
COPING	M-Weld™ Snap-On Coping	Galv. Steel (22–24 ga.), Aluminum (0.040–0.080)	20 ga.	12" (305 mm)/ 40" (1,016 mm) OC	Single-Ply/ Mod Bit/BUR
	M-Weld™ Snap-On Coping Plus	Galv. Steel (22–24 ga.), Aluminum (0.040–0.080)	16 ga.	12" (305 mm)/ 40" (1,016 mm) OC	Single-Ply/ Mod Bit/BUR
	M-Weld™ Formed Coping	Galv. Steel (22–24 ga.)	20 ga.	120" (3.05 m)	Single-Ply/ Mod Bit/BUR
	M-Weld™ Formed Coping Plus	Galv. Steel (22–24 ga.), Aluminum (0.040–0.080)	16 ga.	120" (3.05 m)	Single-Ply/ Mod Bit/BUR
GUTTERS/ EDGEBOX	EverGuard® WR Box Gutter	Galv. Steel (22–24 ga.), Aluminum (0.040–0.080)	Extruded	24" (610 mm) OC	Single-Ply
	EverGuard® WR Offset Gutter	Galv. Steel (22–24 ga.), Aluminum (0.040–0.080)	Extruded	24" (610 mm) OC	Single-Ply
	EverGuard® WR Chamfer Gutter	Galv. Steel (22–24 ga.), Aluminum (0.040–0.080)	Extruded	24" (610 mm) OC	Single-Ply
	EverGuard® EdgeBox RI	Galv. Steel (20 ga.)	N/A	120" (3.05 m)	Single-Ply



# Color Options

												
Statuary Bronze A-01	Concord Cream A-02	Redwood A-03										
												
Siam Blue A-04	Medium Bronze A-05	Sandstone A-06										
												
Mission Red A-07	Black A-08	Dove Gray A-09										
												
Rawhide A-10	Chocolate Brown A-11	Ascot White A-12										
												
Forest Green A-13	Patina Green A-14	Rocky Gray A-15										
												
Charcoal Gray A-16	*Bright Red A-17	Regal Blue A-18										
												
Turquoise A-19	Shale Gray A-20	Slate Blue A-21										
												
Bone White A-23	Hartford Green A-24	Boysenberry A-25										
	<div data-bbox="574 1589 1531 1822" style="border: 1px solid #ccc; padding: 5px;"> <p>*Premium Finishes</p> <table border="0"> <tbody> <tr> <td></td> <td></td> </tr> <tr> <td>*Coppertone A-28</td> <td>*Antique Patina A-29</td> </tr> <tr> <td></td> <td></td> <td></td> </tr> <tr> <td>*Silversmith A-30</td> <td>*Champagne A-31</td> <td>*Titanium A-32</td> </tr> </tbody> </table> </div>				*Coppertone A-28	*Antique Patina A-29				*Silversmith A-30	*Champagne A-31	*Titanium A-32
												
*Coppertone A-28	*Antique Patina A-29											
												
*Silversmith A-30	*Champagne A-31	*Titanium A-32										
Sierra Tan A-26												
												
Hemlock Green A-27												

Colors shown are representations only. Actual color may vary. Always obtain actual metal color chip from your GAF Territory Manager prior to order.