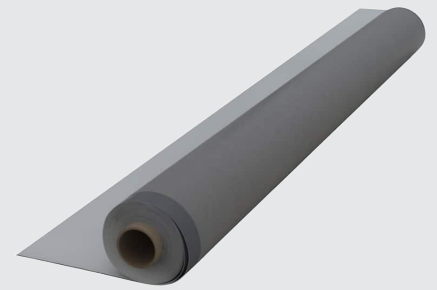


EverGuard® TPO
GAF Fleece-Back Membrane
45-mil 60-mil 80-mil



Description:

Combine performance and value with EverGuard® TPO Fleece-Back Membrane 45-mil, 60-mil, and 80-mil.

Factory-applied polyester fleece lets you offer the proven performance of EverGuard® TPO, while increasing durability and reducing labor:

- Provides enhanced puncture resistance against foot traffic, hail, and other impacts*
- Does not require a slip sheet when installed over a variety of existing roof systems
- Guarantees available according to thickness, with coverage up to 30 years for 80-mil**

Accessories:

Fabricating details on-site can be time-consuming, costly, inconsistent, and even unreliable. EverGuard® TPO prefabricated accessories save you time and labor, deliver consistent performance, and create a uniform aesthetic.

* GAF warranties and guarantees do not provide coverage against traffic except where GAF walkways are applied, or against hail or other impact. Refer to gaf.com for more information on warranty and guarantee coverage and restrictions. Hail or puncture resistance coverage may be available for purchase for eligible systems. Contact GAF for more information.

** Additional requirements apply. Contact GAF for more information. See applicable guarantee, available at gaf.com, for complete coverage and restrictions.

Installation:

Explore installation options — EverGuard® TPO Fleece-Back Membrane can be installed with a wide range of applications:

- **Mechanically attached** — quick, cost-effective, and available practically year-round
- **Adhered** — effective with EverGuard® WB181 Bonding Adhesive (water-based) or hot asphalt for a smooth appearance and excellent wind uplift
- **LRF Adhesive O** — low-rise foam that's low-VOC, ideal for minor surface irregularities, and available in a cartridge or 5-gallon container
- **LRF Adhesive M** — low-rise foam that's similar to LRF-O and can also be used for ISO insulation applications
- **LRF Adhesive XF** — 2-part low-rise foam that's Low-VOC, ideal for minor surface irregularities, and can adhere up to 24 squares of Fleece-Back Membrane.
- **OlyBond 500** — 2-part low-rise foam that's Low-VOC, ideal for minor surface irregularities, and can adhere up to 24 squares of Fleece-Back Membrane



MADE IN THE U.S.A.
WITH DOMESTIC AND IMPORTED MATERIALS.
AMERICAN JOBS IN AMERICAN FACTORIES.



Visit gaf.com

For additional information, contact GAF Design Services at 1-877-423-7663 or designservices@gaf.com

We protect what matters most™



| Physical Properties (ASTM D6878) | | | | | |
|------------------------------------|--|--|--|--|--|
| Type | ASTM Test Method | ASTM D 6878 Minimum | EverGuard® TPO Fleece-Back Membrane Test Values (approx.) ² | | |
| | | | 45 mil | 60 mil | 80 mil |
| Nominal Thickness | ASTM D 751 | 0.039" (0.99 mm) | 0.045" (1.14 mm) | 0.060" (1.52 mm) | 0.080" (2.03 mm) |
| Breaking Strength | ASTM D 751 Grab Method | 220 lbf (38.5 kg) | 375 lbf x 330 lbf (559 x 492 kg/m) | 400 lbf x 360 lbf (596 x 536 kg/m) | 440 lbf x 390 lbf (656 x 581 kg/m) |
| Factory Seam Strength | ASTM D 751 | 66 lbf (98.34 kg/m) | 115 lbf (membrane failure) (171 kg/m) | 145 lbf (membrane failure) (216 kg/m) | 155 lbf (membrane failure) (231 kg/m) |
| Elongation at Break | ASTM D 751 | 15% | 30% | 30% | 30% |
| Heat Aging | ASTM D 573 | 90% Retention of Breaking Strength and Elongation at Break | 100% | 100% | 100% |
| Tear Strength | ASTM D 3045 8" x 8" sample (203 mm x 203 mm) | 55 lbf (81.95 kg/m) | 90 lbf x 120 lbf (134 x 179 kg/m) | 70 lbf x 130 lbf (104 x 194 kg/m) | 100 lbf x 180 lbf (149 x 268 kg/m) |
| Puncture Resistance | FTM 101 C Method 2031 | Not Established | >350 lb. (159 kg) | >380 lb. (172 kg) | >380 lb. (172 kg) |
| Cold Brittleness | ASTM D 2137 | -40° C | -40° C | -40° C | -40° C |
| Permeance | ASTM E 96 | Not Established | 0.08 Perms | 0.08 Perms | 0.08 Perms |
| Dimensional Change | ASTM D 1204 @ 158°F (70°C), 6 hrs. | ±1% | 0.2% | 0.4% | 0.4% |
| Water Absorption | ASTM D 471 @ 158°F (70°C), 1 week | ±3.0% | 0.7% | 0.7% | 0.7% |
| Hydrostatic Resistance | ASTM D 751 Method D | Not Established | 390 psi | 430 psi | 430 psi |
| Ozone Resistance | ASTM D 1149 | No visible deterioration @ 7x magnification | No visible deterioration @ 7x magnification | No visible deterioration @ 7x magnification | No visible deterioration @ 7x magnification |
| Reflectivity (white) Initial/Aged* | ASTM C 1549 | N/A | 0.76/0.68 | 0.76/0.68 | 0.76 / 0.68 |
| Emissivity (white) Initial/Aged* | ASTM C 1371 | N/A | 0.90/0.83 | 0.90/0.83 | 0.90/0.83 |
| Weather Resistance | ASTM G 155 / D 6878 | 10,080 KJ / (m ² . nm) at 340 nm | >20,000 KJ / (m ² . nm) at 340 nm | >25,000 KJ / (m ² . nm) at 340 nm | >25,000 KJ / (m ² . nm) at 340 nm |
| Heat Aging | ASTM D 573 | 240°F (115° C), 32 weeks | 60 weeks | 60 weeks | 60 weeks |
| Thickness Above Scrim | ASTM D 7635 | Min 30% of Total Thickness | 15.8 mil (Nominal) | 22.1 mil (Nominal) | 31.4 mil (Nominal) |
| Available Guarantees | | | Up to 20 years | Up to 25 years | Up to 30 years |

NOTE: Additional requirements apply. Contact GAF for more information. See applicable guarantee, available at gaf.com, for complete coverage and restrictions.

*White Membrane Only




¹ Certain data is provided in MD (machine direction) x CMD (cross machine direction) format.

² Values stated are approximate and subject to normal manufacturing variation. These values are not guaranteed and are provided solely as a guide.



EverGuard® TPO
GAF Fleece-Back Membrane
 45-mil 60-mil 80-mil

Applicable Standards/Approvals

| | | | |
|---|--|--|--|
|  | Miami Dade County Product Control Approved | UL Evaluation Report UL ER1306-01 | ICC-ES Evaluation Report ESR-4676 (Cedar City, UT only) |
|  | FM Approved (Refer to FM www.RoofNav.com for actual assemblies) | Meets or exceeds the requirements of ASTM D6878. | State of Florida Approved |
|  | Classified by UL in accordance with ANSI/UL 790. (Refer to UL Product iQ for actual assemblies). | Texas Department of Insurance Report RC-122 | CRRC Rated - Can be used to comply with 2022 Title 24, Part 6, Cool Roof Requirements of the California Code of Regulations (White only) |

Product Data

| Roll Size | Colors | Full Roll Size | Full Roll Weight (Average) | Half Roll Size | Half Roll Weight (Average) |
|----------------|---|---|----------------------------|---|----------------------------|
| 45 mil | White, Tan, Gray | 10' x 100' (3.05 x 30.5 m) (1,000 sq. ft. [92.9 sq.m]) | 270 lb. (122 kg) | 5' x 100' (1.52 x 30.5 m) (500 sq. ft. [46.5 sq.m]) | 144 lb. (65 kg) |
| 60 mil | White, Tan, Gray, Energy Tan, Energy Gray | 10' x 100' (3.05 x 30.5 m) (1,000 sq. ft. [92.9 sq.m]) | 344 lb. (156 kg) | 5' x 100' (1.52 x 30.5 m) (500 sq. ft. [46.5 sq.m]) | 185 lb. (84 kg) |
| 80 mil | White, Tan, Gray | 10' x 50' (3.05 x 15.24 m) (500 sq. ft. [46.5 sq.m]) | 238 lb. (108 kg) | 5' x 50' (1.52 x 15.24 m) (250 sq. ft. [23.23 sq.m]) | 112 lb. (51 kg) |
| Storage | Store on pallets in a clean, dry area at temperatures below 100°F (38° C). | | | | |
| Safety Warning | Membrane rolls are heavy. Employ at least two people to position and install. | | | | |

Note: Membrane rolls shipped horizontally on pallets, stacked pyramid-style and banded.

