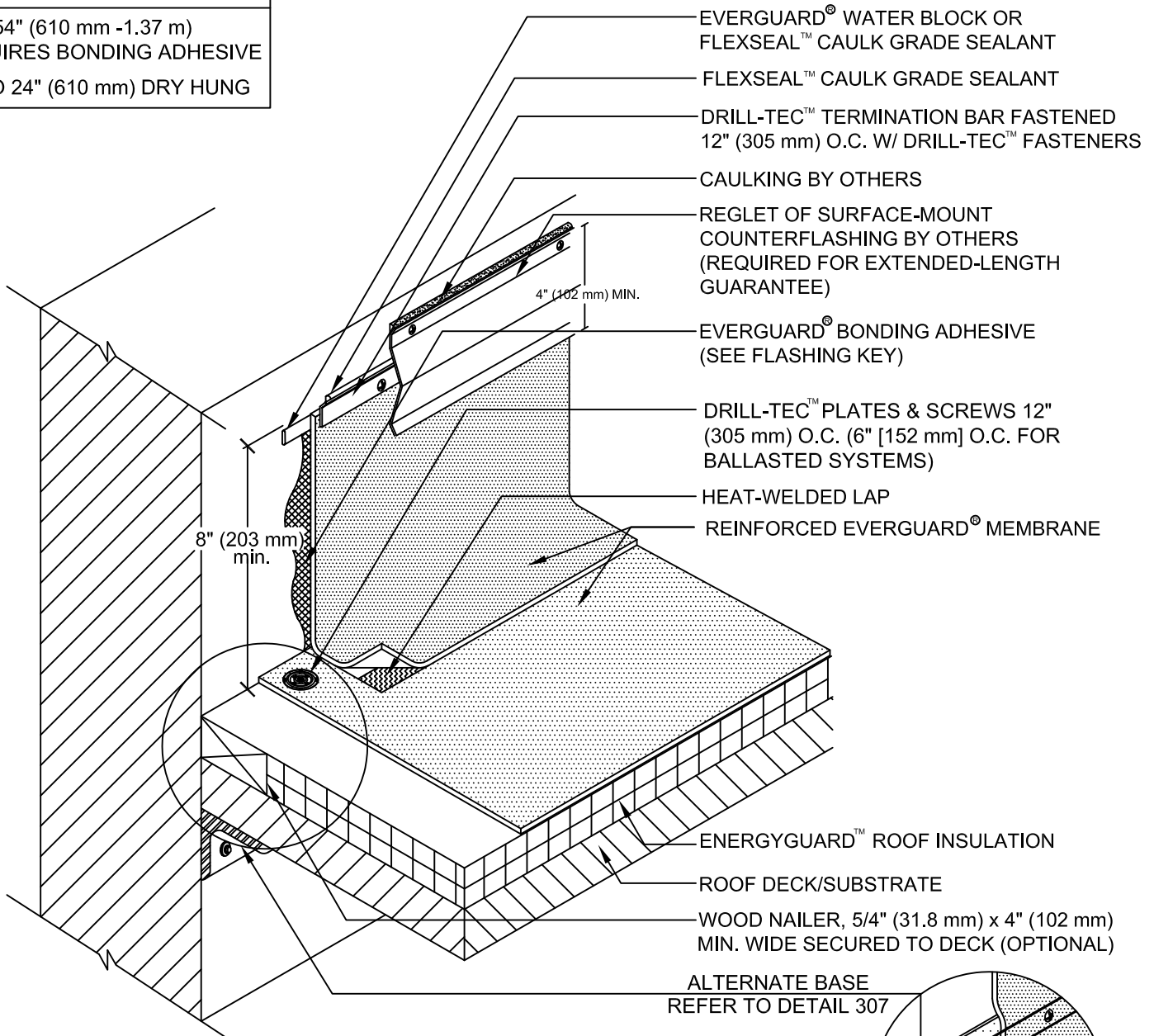


FLASHING KEY

- 24" - 54" (610 mm -1.37 m)
REQUIRES BONDING ADHESIVE
- UP TO 24" (610 mm) DRY HUNG



NOTE:

1. FOR INSULATION THICKNESS GREATER THAN 8" (203 mm), A HARD BOARD IS REQUIRED ON MECHANICALLY FASTENED SYSTEMS ONLY.
2. EXISTING REGLET IS ACCEPTABLE IF METAL IS IN GOOD CONDITION.
3. IF EVERGUARD® FREEDOM™ MEMBRANE IS USED, BONDING ADHESIVE IS NOT NEEDED AND WALL MUST BE PRIMED.
4. FOR SELF-ADHERED RAPIDSEAM™ TECHNOLOGY SYSTEMS, SEE EVERGUARD® DETAIL 330 FOR LAP APPLICATION.
5. APPLY EVERGUARD® TPO CUT EDGE SEALANT TO ALL CUT REINFORCED TPO EDGES (REFER TO EVERGUARD® DETAIL 115).



EverGuard
SINGLE-PLY ROOFING SYSTEMS
PARAPET WALL &
CURB SERIES

DRAWING #
301

**PARAPET WALL FLASHING WITH
COUNTERFLASHING**

THIS DETAIL APPLIES TO:

ALL SYSTEMS

www.gaf.com
1 Campus Drive,
Parsippany, NJ 07054

SCALE
N.T.S.

REVISION DATE
6-20-16