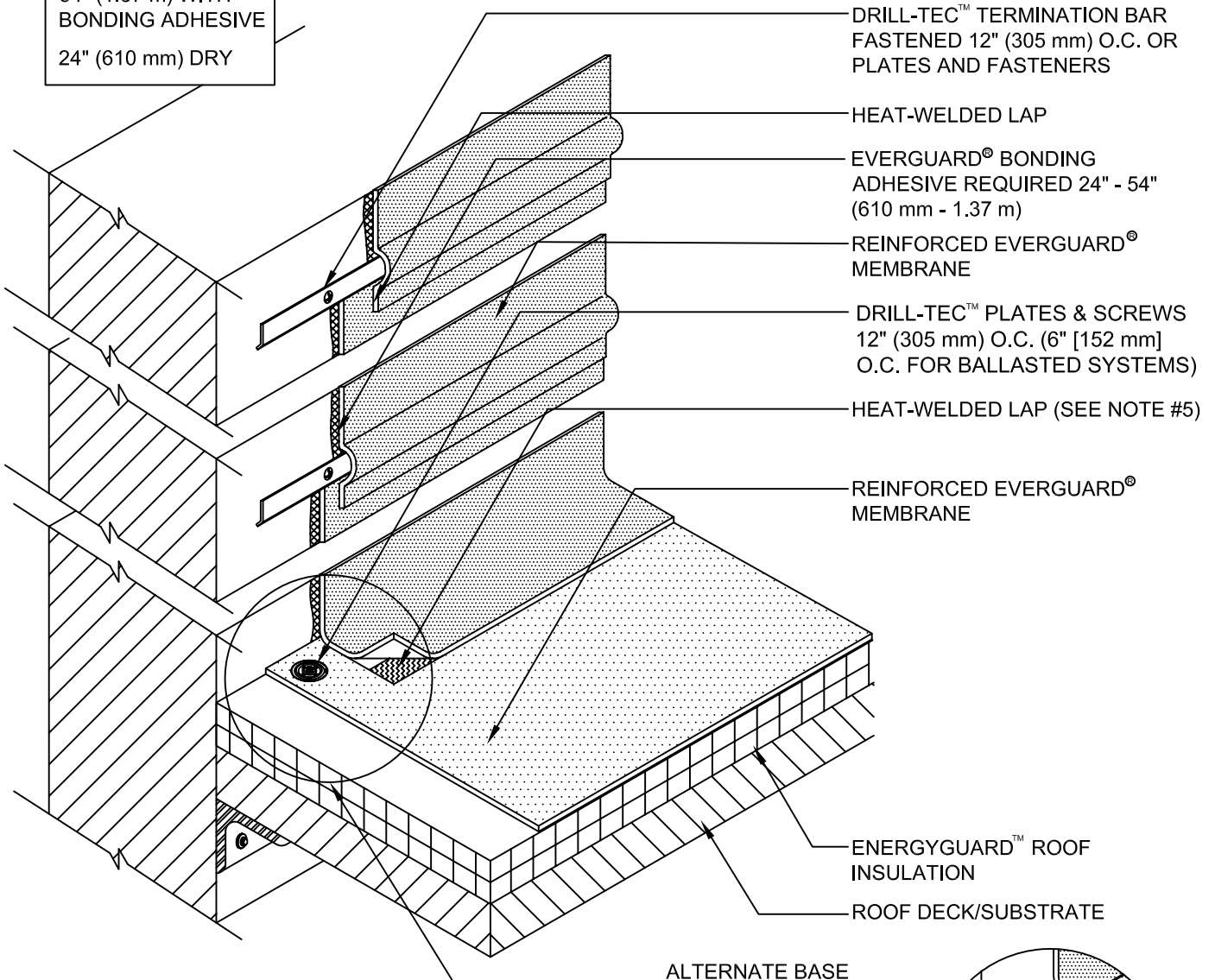


**INTERMITTENT FASTENING KEY**

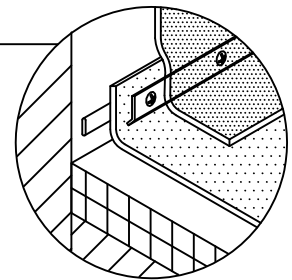
54" (1.37 m) WITH BONDING ADHESIVE  
24" (610 mm) DRY



ALTERNATE BASE  
REFER TO DETAIL 307

**NOTE:**

1. FOR MECHANICALLY ATTACHED SYSTEMS ONLY, INSULATION THICKNESSES GREATER THAN 8" (203 mm) REQUIRE A HARD BOARD OR COVERBOARD.
2. 24" (610 mm) MAX. DIMENSION FOR LOOSE-APPLIED FLASHINGS.
3. 54" (1.37 m) MAX. DIMENSION FOR FULLY ADHERED FLASHINGS.
4. ADD BALLAST PER SPECIFICATION FOR BALLASTED SYSTEMS.
5. FOR SELF-ADHERED RAPIDSEAM™ TECHNOLOGY SYSTEMS, UP TO 10-YR. MAXIMUM GUARANTEE ONLY.
6. APPLY EVERGUARD® TPO CUT EDGE SEALANT TO ALL CUT REINFORCED TPO EDGES (REFER TO EVERGUARD® DETAIL 115).



www.gaf.com  
1 Campus Drive,  
Parsippany, NJ 07054

**EverGuard**  
SINGLE-PLY ROOFING SYSTEMS  
PARAPET WALL &  
CURB SERIES

DRAWING #  
**306**

SCALE  
N.T.S.

**HIGH WALL FLASHING DETAIL**

**THIS DETAIL APPLIES TO:**  
Adhered Systems  
Ballasted Systems  
Mechanically Attached Systems  
Self-Adhered Systems  
TriPosite Systems

REVISION DATE  
**6-23-15**