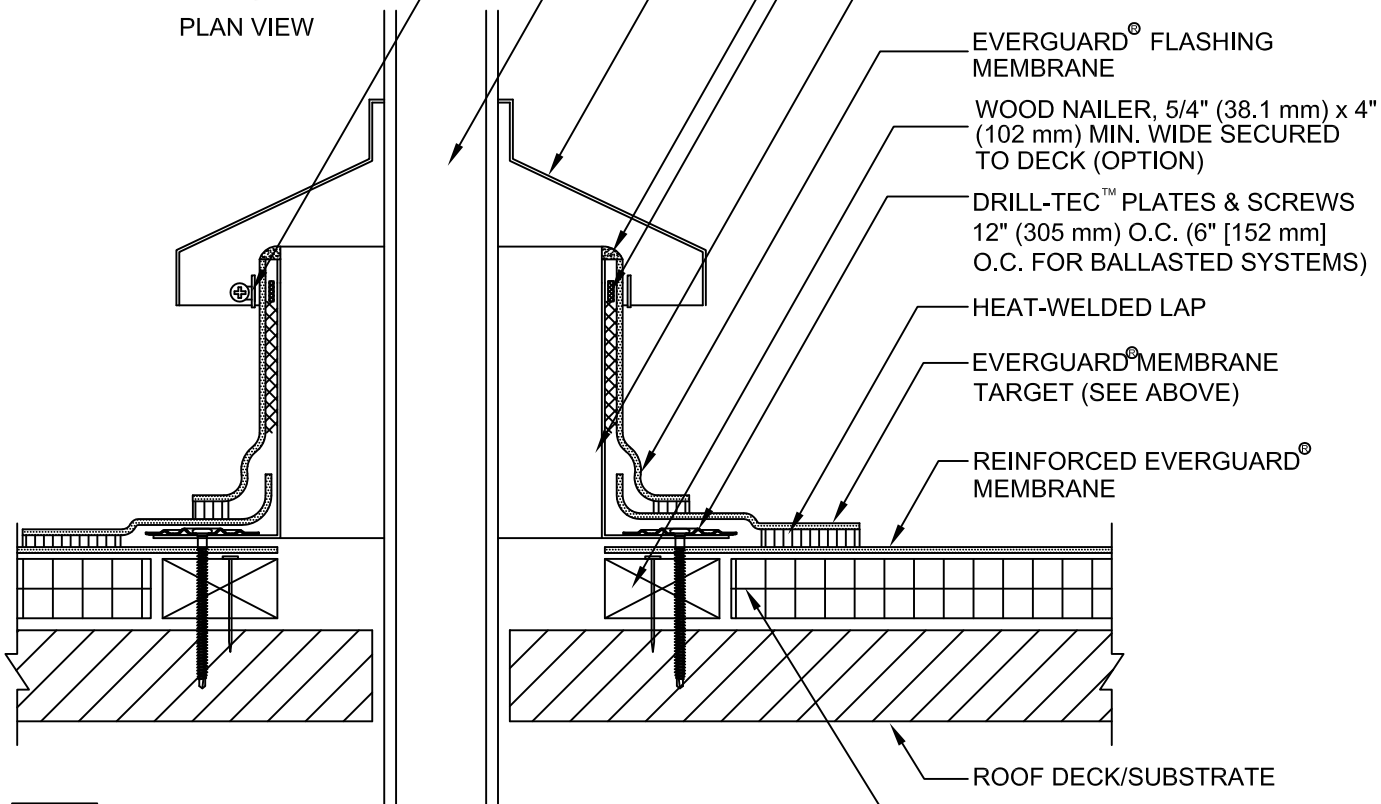


PLAN VIEW



- TARGET MADE FROM EVERGUARD® MEMBRANE
- STAINLESS STEEL CLAMP
- HIGH TEMPERATURE PIPE STACK
- RAIN HOOD
- EVERGUARD® BONDING ADHESIVE (OPTIONAL)
- EVERGUARD® WATER-BLOCK OR FLEX SEAL™ CAULK GRADE
- 24 GA. GALV. PAN
- EVERGUARD® FLASHING MEMBRANE
- WOOD NAILER, 5/4" (38.1 mm) x 4" (102 mm) MIN. WIDE SECURED TO DECK (OPTION)
- DRILL-TEC™ PLATES & SCREWS 12" (305 mm) O.C. (6" [152 mm] O.C. FOR BALLASTED SYSTEMS)
- HEAT-WELDED LAP
- EVERGUARD® MEMBRANE TARGET (SEE ABOVE)
- REINFORCED EVERGUARD® MEMBRANE
- ROOF DECK/SUBSTRATE
- ENERGYGUARD™ ROOF INSULATION

NOTE:

1. TO BE USED WHEN TEMPERATURE OF STACK EXCEEDS 160° F.
2. FOR INSULATION THICKNESS GREATER THAN 8" (203 mm), A HARD BOARD IS REQUIRED ON MECHANICAL SYSTEMS ONLY.
3. APPLY HEAT TO DETAIL MEMBRANE AND FORM BY HAND PRIOR TO INSTALLING.
4. APPLY EVERGUARD® TPO CUT EDGE SEALANT TO ALL CUT REINFORCED TPO EDGES (REFER TO EVERGUARD® DETAIL 115).



EverGuard
SINGLE-PLY ROOFING SYSTEMS
ROOF PENETRATION SERIES

DRAWING #
508
SCALE
N.T.S.

HIGH TEMPERATURE STACK FLASHING DETAIL

THIS DETAIL APPLIES TO:
ALL SYSTEMS
REVISION DATE
5-25-16