

# **Built-Up Roofing (BUR) (COMGN288)**

Updated: 1/17



*Quality You Can Trust...From  
North America's Largest Roofing Manufacturer!™*

# ROOFING ACCESSORIES

## ADHESIVES, PRIMERS & SEALANTS

GAF offers a complete line of premium, asbestos-free modified adhesives and cements. Whether installing a new membrane with cold-process adhesive or installing new or repairing flashings around openings and penetrations, our products offer performance that is durable and cost effective. Refer to the Technical Data Sheet for specific application usage and instructions.

### Cold-Applied Adhesives



Matrix™ 103 Cold Process Adhesive

### Patching & Repair Cement



Matrix™ 201 Premium SBS Flashing Cement



Matrix™ 202 SBS Flashing Cement



Matrix™ 203 Plastic Roof Cement



Matrix™ 204 Wet/Dry Roof Cement



Matrix™ 220 Two-Part Flashing Cement

### Roof Primers & Sealants



Matrix™ 307 Premium Asphalt Primer



M-Thane™ One-Part Pourable Sealant (white)



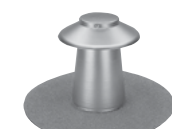
M-Thane™ Two-Part Sealant (black)



M-Bond™ Adhesive/Sealant

## FLASHING ACCESSORIES

GAF offers factory-built flashing accessories to complement asphaltic roofing systems. They are available for use with SBS or APP smooth or granule surface, and provide a professional, clean finish to roofing jobs.



M-Weld™ Standard M-Vent™



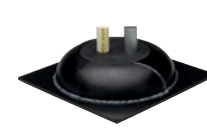
M-Weld™ Adjustable M-Vent™



M-Weld™ One-Way Vent



M-Weld™ Drain Insert



M-Curb™ System (Available in white, black)



Curb-to-Curb (CMF) Style



Curb-to-Wall (CTW) Style



Cont-to-Cont (SMF) Style



Low Cont-to-Cont (LP) Style

## EXPANSION JOINT COVERS

GAF has designed the most flexible group of expansion joint covers in the industry. Metalastic® Expansion Joint Covers eliminate splice joints every 10' (3.05 m) and promote trouble-free roofing system performance. Available in four standard types.

## GAF ROOF GUARANTEE PROGRAM

GAF offers an extensive selection of roof guarantees to meet the needs of most building owners. The following guarantees are available for use with selected GAFGLAS®, RUBEROID®, and LIBERTY™ Roof Systems when installed by an eligible GAF factory-certified contractor. Contact GAF Technical Services for additional information and specific guarantee requirements.

GAF Roof Guarantee Type	Coverage	Term
All-American Pledge™ Steep- and Low-Slope Roof Guarantee	NDL	5 to 20 Years
GAF Diamond Pledge™ NDL Roof Guarantee	NDL	5 to 20 Years
GAF System Pledge™ Roof Guarantee	Specified \$ per square	5 to 20 Years
WellRoof® Guarantee Extension*	Extends Diamond Pledge™ Coverage	25% longer term

\*A program that encourages property owners to utilize an annual maintenance agreement; when certain requirements are met, GAF will extend its Diamond Pledge™ NDL Guarantee by 25%. Contact Technical Services at 1-800-766-3411 for qualifying specifications and detailed information. All work must be completed by a GAF Certified Maintenance Professional (CMP). See WellRoof® Guarantee Extension for complete coverage and restrictions.

Restoration/Extension/Limited Material Warranties and Guarantees**	Coverage	Term
Weather Stopper® Integrated System Limited Warranty	NDL	5 to 20 Years

\*\*Contact GAF Technical Services for additional information and guarantee requirements.

Refer to these manuals for application and systems specifications and system guarantees, available at [gaf.com](http://gaf.com). For further information, contact Technical Services at 1-800-ROOF-411 (1-800-766-3411).



Quality You Can Trust... From North America's Largest Roofing Manufacturer!™

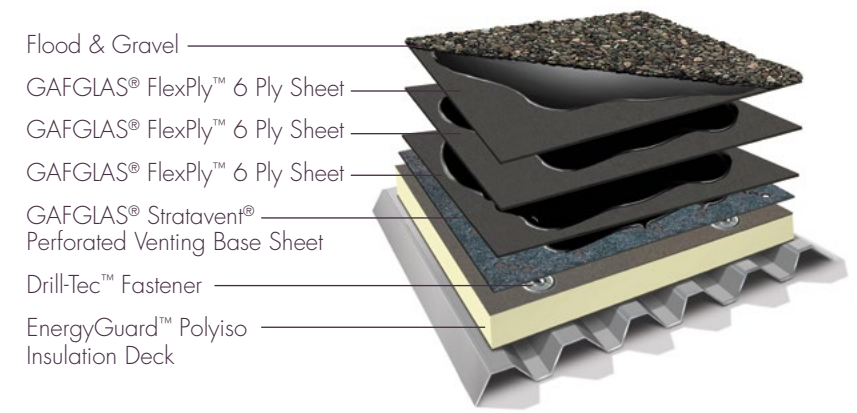
# BUILT-UP

## Roofing Systems Product Catalog



# BUILT-UP ROOFING (BUR)

Built-Up Roofing (BUR) systems are composed of alternating layers of asphalt and reinforcing fabrics that create a finished membrane. The reinforcing fabrics or ply sheets are applied by either hot-mop or cold-applied adhesive methods. The surfacing layer, typically mineral cap sheet or flood coat and gravel, is mineral surfaced where mineral granules may be dispersed on top of the cap sheet for added protection and a more professional look.



**TYPICAL 4-PLY BUR SYSTEM WITH GAFGLAS® STRATAVENT®, FLEXPly™ 6, FLOOD COAT, AND GRAVEL**

## CHOOSING THE RIGHT ASPHALTIC ROOFING SYSTEM

Choosing the right roofing system for an application can be complicated. There are many roof membrane options, and each property may have its own set of unique requirements. So, how do you choose the right roofing system for your property?

- = Top Performance
  - ◐ = Excellent Performance
  - ◑ = Good Performance
  - ◒ = Not Recommended
- [Ratings based on GAF estimates and contractor interviews]

Desired Characteristic	SELF ADHERED RUBEROID® Safematerial	HOT MOPPED/ COLD APPLIED RUBEROID® Safematerial RUBEROID® Safematerial RUBEROID® Safematerial	HEAT WELDED RUBEROID® Safematerial	TORCH APPLIED RUBEROID® AP Torch	BUILT-UP ROOFING GAFGLAS® BUR Mineral
Multi-Layered Membrane Protection	◑	◑	◑	◑	●
Flexes To Conform To Normal Roof Movement	◑	◑	◑	◑	◑
Low Maintenance	●	●	●	●	●
Light Reflective For Energy Savings	◑	●	●	●	●
Puncture/Leak Resistant	◑	◑	◑	◑	◑
Easy To Repair After Installation	●	●	●	●	◑
Heat Welded, Self Adhered, Torched, Cold Applied, Or Mopped Seam Strength	◑	●	●	●	●
Grease/Oil/Chemical Resistant <sup>1</sup>	◑	◑	◑	◑	◑
Can Be Installed In Cool Weather	◑	◑	●	◑	◑
High Heat and UV Resistance	◑	◑	◑	◑	◑
Maximum Guarantee Length In Years*	20	20	20	20	20

\*Note: For complete details, restrictions, requirements, terms, and conditions, please refer to official guarantee document and applicable GAF specification manual.

<sup>1</sup>See applicable GAF guarantee for specific exclusions. <sup>2</sup>Requires the use of RUBEROID® EnergyCap™ Products.

## BUILT-UP ROOFING (BUR) PRODUCTS

	BASE SHEETS				PLY SHEETS		CAP SHEETS	
Product	GAFGLAS® #75 Base Sheet	GAFGLAS® #80 Ultima™ Base Sheet	GAFGLAS® Stratavent® Nailable Venting Base Sheet	GAFGLAS® Stratavent® Perforated Venting Base Sheet	GAFGLAS® Ply 4 Ply Sheet	GAFGLAS® FlexPly™ 6 Ply Sheet	GAFGLAS® Mineral-Surfaced Cap Sheet	GAFGLAS® EnergyCap™ Mineral-Surfaced Cap Sheet
Primary Application Method	Hot Applied Cold Applied Mechanically	Hot Applied Cold Applied Mechanically	Mechanically	Hot Applied	Hot Applied	Hot Applied	Hot Applied	Hot Applied
Advantages	<ul style="list-style-type: none"> <li>Extra strength for excellent nail-holding ability</li> <li>Superb tensile strength and resilience</li> <li>No bleed through</li> <li>Will not rot, curl, or shrink</li> </ul>	<ul style="list-style-type: none"> <li>Helps prevent splitting and rolls out flat for easy installation</li> <li>Resists long-term curling and shrinkage</li> <li>Inorganic Micro Weave™ Core provides excellent tensile strength with dimensional stability</li> <li>Highest roofing fire rating</li> </ul>	<ul style="list-style-type: none"> <li>Provides for venting of pressurized gases beneath the roofing membrane</li> <li>Fire resistant</li> <li>Wind uplift resistant</li> <li>Can be installed in all climate zones</li> </ul>	<ul style="list-style-type: none"> <li>Provides for venting of pressurized gases beneath the roofing membrane</li> <li>Fire resistant</li> <li>Provides uniform spot attachment of the roofing membrane</li> <li>Wind uplift resistant</li> <li>Can be installed in all climate zones</li> </ul>	<ul style="list-style-type: none"> <li>High tensile strength and optimum porosity of the felt</li> <li>Asphalt coating provides high degree of moisture resistance</li> <li>Fire resistant</li> <li>Wind uplift resistance</li> <li>Can be used in all climate zones</li> </ul>	<ul style="list-style-type: none"> <li>Rolls out easier and lays flatter</li> <li>Installs faster than other Type VI felts</li> <li>Excellent tensile strength/dimensional stability</li> <li>Superb wind resistance</li> <li>Can be used in all climate zones</li> </ul>	<ul style="list-style-type: none"> <li>Durable, glass base resists the effects of moisture on the roof system</li> <li>Ultra-violet protective surface</li> <li>Requires no additional surface coatings</li> <li>Code approvals – UL Class A, B, or C</li> </ul>	<ul style="list-style-type: none"> <li>ENERGY STAR® certified (U.S. only)</li> <li>Glass base resists the effects of moisture on the roof system</li> <li>UL Class A, B, or C membrane constructions are available</li> </ul>
ASTM	D4601 Type II	D4601 Type II	D4897 Type II D3672 Type II	D4897 Type II	D2178 Type IV	D2178 Type VI	D3909	D3909 E903 E408
Applicable Standards	FM Approved ICC ESR-1274 Miami-Dade County Product Control Approved UL/ULC Listed	FM Approved ICC ESR-1274 Miami-Dade County Product Control Approved State of Florida Approved UL/ULC Listed	FM Approved ICC ESR-1274 Miami-Dade County Product Control Approved State of Florida Approved Texas Dept. of Insurance UL/ULC Listed	FM Approved ICC ESR-1274 Miami-Dade County Product Control Approved State of Florida Approved Texas Dept. of Insurance UL/ULC Listed	FM Approved ICC ESR-1274 Miami-Dade County Product Control Approved UL/ULC Listed – for use in Class A rated assemblies	FM Approved ICC ESR-1274 Miami-Dade County Product Control Approved State of Florida Approved Texas Dept. of Insurance UL/ULC Listed	FM Approved Miami-Dade County Product Control Approved State of Florida Approved UL/ULC Listed	ICC Evaluation Report Pending ENERGY STAR® Certified UL/ULC Listed CRRC rated
Guarantees <sup>1</sup>	System guarantees available for up to 20 years	System guarantees available for up to 20 years	System guarantees available for up to 20 years	System guarantees available for up to 20 years	Typical system guarantee up to 15 years; select systems available with up to 20 year guarantee	System guarantees available for up to 20 years	System guarantees available for up to 20 years	System guarantees available for up to 20 years
Product Specifications	Roll Size: 3 squares (320.1 gross sq. ft.) [29.7 m <sup>2</sup> ] Roll Length: 97.5' [29.7 m] Roll Width: 39.375" [1.0 m] Approx Roll Weight: 68 lb. [30.8 kg]	Roll Size: 2 squares (214 gross sq. ft.) [19.9 m <sup>2</sup> ] Roll Length: 65.2' [19.9 m] Roll Width: 39.375" [1.0 m] Approx Roll Weight: 80 lb. [36.3 kg]	Roll Size: 1.26 squares (133.4 gross sq. ft.) [12.4 m <sup>2</sup> ] Roll Length: 40.6' [12.4 m] Roll Width: 39.375" [1.0 m] Approx Roll Weight: 67 lb. [30.39 kg]	Roll Size: 1.26 squares (133.4 gross sq. ft.) [12.4 m <sup>2</sup> ] Roll Length: 40.6' [12.4 m] Roll Width: 39.375" [1.0 m] Approx Roll Weight: 67 lb. [30.39 kg]	Roll Size: 5 squares (531 gross sq. ft.) [49.3 m <sup>2</sup> ] Roll Length: 161.8' [49.3 m] Roll Width: 39.375" [1.0 m] Approx Roll Weight: 34.9 lb. [20.0 kg]	Roll Size: 5 squares (531 gross sq. ft.) [49.3 m <sup>2</sup> ] Roll Length: 161.8' [49.3 m] Roll Width: 39.375" [1.0 m] Approx Roll Weight: 34.9 lb. [20.0 kg]	Roll Size: 1 square (107 gross sq. ft.) [9.9 m <sup>2</sup> ] Roll Length: 32.6' [9.9 m] Roll Width: 39.4" [1.0 m] Approx Roll Weight: 68 lb. [30.8 kg]	Roll Size: 1 square (106.9 gross sq. ft.) [9.9 m <sup>2</sup> ] Roll Length: 32.6' [9.9 m] Roll Width: 39.4" [1.0 m] Approx Roll Weight: 73 lb. [33.1 kg] Emissivity: 0.90 Reflectivity: 0.80

<sup>1</sup>See applicable GAF guarantee for complete coverage and restrictions.

