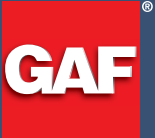


Perimeter Edge Metal Brochure (COMGN296)

Updated: 7/18



*Quality You Can Trust...From
North America's Largest Roofing Manufacturer!™*



Quality You Can
Trust... From
North America's
Largest Roofing
Manufacturer!™

PERIMETER EDGE METAL

gaf.com

Beautify and help save
on labor costs by using
consistent products that
consistently perform



GAF Perimeter Edge Metal Products



For additional product information, visit www.gaf.com/EdgeMetal

Perimeter Edge Metal

Perimeter edge metal is not just there to finish off the edge of a building and make it look nice. It plays a critical role in the whole building design as the termination and transition between the roof and other building components. A pre-fabricated edge metal system provides consistency, reliable performance, and an aesthetically appealing design – not to mention it helps reduce installation time and labor costs.

GAF Perimeter Edge Metal offers a full lineup of pre-fabricated coping, fascia, drip edge, gutter, downspout, and trims in both steel and aluminum in a variety of Kynar®-coated* colors.

All perimeter edge metal products are tested and approved per ANSI/SPRI/FM 4435/ES-1 since they are the first line of protection in a wind event.

GAF Perimeter Edge Metal products come with pre-punched slotted holes and the appropriate fasteners for strong cleat and rail attachment to reduce the risk of leaks. They also allow for thermal movement and the use of high-torque screws vs. nails.

Features and Benefits

- Edge acts as an effective termination and transition between the roof and other building components.
- It's a roof's first line of defense against wind and water infiltration.
- Helps save on labor because there's no crimping required at the roof edge.
- Folded, metal-locked, or welded, all corners and accessories come pre-manufactured and ready to install for a clean finished look.
- Easy snap-on design allows for quick, accurate installation.
- Adds an aesthetic feature to the building's exterior.
- Included fasteners and pre-punched holes for strong cleat/rail attachment without guessing.
- Exceptional strength and performance since it's made of formed galvanized steel retainer or a formed aluminum retainer.
- Slotted holes allow for thermal movement and the use of high-torque screws vs. nails.
- No caulking/sealants to apply or maintain makes for a fast installation.
- Does not require field notching and can be installed in either direction.
- Allows for expansion and contraction — to help prevent oil canning.
- Clean, professional finished look enhances the roof system.



Shown above: EverGuard® Standard EZ Fascia EX

*Kynar® is a registered trademark of Arkema, Inc.

GAF EverGuard® Fascia & M-Weld™ Fascia Products

EverGuard® Snap-on Fascia

Economical solution for single-ply membranes less than 60 mils thick



Continuous Galvanized Spring Clip

- Installs quickly with a spring clip (vs. static)
- No need for field crimping

Concealed Splice Plate

- Smooth/unbroken appearance

Cover is Not Fastened or Sandwiched Into Membrane

- Free floating, helps prevent oil canning

Snap-On Design/No Exposed Fasteners

- Clean lines
- Helps reduce installation time and labor costs

Face Sizes

- Sizes range from 4¾" to 12" (120.65 mm – 304.8 mm)
- Tested per ANSI/SPRI/FM 4435/ES-1

EverGuard® Standard Drip Edge



EverGuard® Standard Drip Edge is a two-part assembly with a continuous cleat and a formed cover for low-slope roof systems. The EverGuard® Standard Drip Edge is formed aluminum in .040" (1.00 mm), .050" (1.25 mm), or 24-gauge Kynar 500®* coated galvanized steel. Cleat is 20-gauge galvanized steel with pre-punched slotted holes for fasteners at 12" (304.8 mm) on center in 10' (3.05 m) standard lengths.

- Tested per ANSI/SPRI/FM 4435/ES-1
- High-quality prefinished Kynar 500® finish
- Economical prefabricated metal edge
- Pre-punched selflocating cleat for proper attachment
- Fasteners included
- For use on adhered or mechanically attached single-ply, modified, and BUR roof systems
- Heatweldable – TPO and PVC coated options available

*Kynar® and Kynar 500® are registered trademarks of Arkema, Inc.

M-Weld™ Gravel Stop MB Fascia Type B



M-BED Technology

- Large metal perforations permit membrane-to-membrane adhesion
- Staggered perforation pattern with over 50% of free area

Slotted Nail Holes

- Easy to install
- Continuous anchor cleat
- Tested per ANSI/SPRI/FM 4435/ES-1

M-Weld™ Gravel Stop MB Fascia Type G



M-BED Technology

- Large metal perforations permit membrane-to-membrane adhesion
- Staggered perforation pattern with over 50% of free area

Slotted Nail Holes

- Easy to install
- Continuous anchor cleat
- Tested per ANSI/SPRI/FM 4435/ES-1

M-Weld™ NP Fascia



Galvanized Steel Water Dam

- Can be installed first to dry in the roof membrane
- Welded aluminum corners available

No Penetrating Fasteners

- Free-floating aluminum fascia
- 20-gauge retainer designed with spring top to allow for flexibility
- Attached using 1½" (38.1 mm) stainless steel ring shank nails
- Concealed splice plates

Standard Sizes

- Sizes range from 4¾" to 12" (120.65 mm – 304.8 mm)
- Tested per ANSI/SPRI/FM 4435/ES-1



These products come in 4 configurations:

- EverGuard® EZ Fascia*
- EverGuard® Standard EZ Fascia EX*
- EverGuard® EZ Fascia AR*
- M-Weld™ EZ Fascia EX*

GAF **EVERGUARD**
M-WELD



Made of formed galvanized steel, formed aluminum, or heavy-duty extruded aluminum for use with single-ply, Mod Bit, or BUR roofing systems.

EverGuard® EZ Fascia EverGuard® EZ Fascia AR

Retainer Base Plate Clamps Membrane like a Termination Bar

- Helps prevent wind and water from blowing under the membrane
- Self-locating with pre-punched slotted holes that allow for expansion and contraction
- Tested per ANSI/SPRI/FM 4435/ES-1

Standoff Fascia with Concealed Drip

- Smooth appearance while directing water away from the wall

Snap-On Design

- Helps reduce installation time and labor costs
- Face size ranges from 3.25" – 12.75" (83 mm – 324 mm)

EverGuard® Standard EZ Fascia EX and M-Weld™ EZ Fascia EX

Extruded Retainer (EX) Clamps Membrane like a Termination Bar

- Tested per ANSI/SPRI/FM 4435/ES-1
- Helps prevent wind and water from blowing under the membrane
- Extrusion can be shipped separately to dry in the roof membrane weeks before color/gauge is selected
- Universal fastener (wood, metal, masonry)

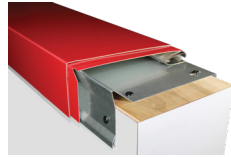
Standard Sizes

- 3.75" (95.3 mm)
- 5.25" (133.4 mm)
- 6.75" (171.5 mm)
- 8.25" (209.6 mm)
- 11.25" (285.8 mm) (EverGuard® Standard EZ Fascia EX)

*All GAF perimeter edge metal products are available in either steel or aluminum

GAF M-Weld™ Coping & Accessory Products

M-Weld™ Snap-On Coping/Coping Plus



Raised Wings in Splice Plate

- Contains a metal clip that functions as a gutter to help channel water back onto the roof
- Helps channel water to roof, eliminating the need for caulking
- Internal concealed splice in the same color as the cap

Concealed Fasteners, Splices, and Clips

- Smooth, unbroken appearance
- Color-matched sight line
- Universal fastener (wood, metal, cement)

Free-Floating Design

- Allows for expansion and contraction

Wall Sizes

- 4" to 32" (102 mm – 813 mm)
- Pre-Punched Holes/Snap-On Design
- Tested per ANSI/SPRI/FM 4435/ES-1
- 20-gauge clip designed to improve contractor productivity
- Snap-On Coping Plus comes with heavy 16-gauge clip for wind resistance
- True welded radius, matching corners, end caps, and other accessories are factory fabricated

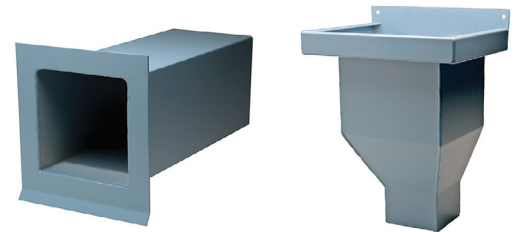
Edge Metal Accessories



GAF Gutter is custom sized to meet your special requirements. Designed with internal straps for smooth, clean lines and easy installation. External hangers and high-wind gutters are optional.

Conductor Heads and Scuppers are factory welded from .050" (1.27 mm) or .063" (1.60 mm) aluminum and in your choice of finish.

- Available in steel and aluminum
- FM approved



Factory-Fabricated Corners & Accessories

Whether folded, metalocked, or welded, GAF Edge Corners and Accessories come premanufactured and ready to install for a clean finished look.

All GAF Perimeter Edge Metal Products Code Approved



- Refer to FM approvals RoofNav for actual assemblies



For additional product information, visit www.gaf.com/EdgeMetal

GAF Perimeter Edge Metal Lineup



GAF Perimeter Lineup		Cap Material/Gauge	Clip Gauge	Clip Length/Spacing	Application
FASCIA	EverGuard® EZ Fascia	Galv. Steel (22–24 ga.), Aluminum (0.040–0.080), Zinc	20 ga.	120" (3.05 m)	Single-Ply
	EverGuard® EZ Fascia AR	Galv. Steel (22–24 ga.), Aluminum (0.040–0.080), Zinc	0.05	120" (3.05 m)	Single-Ply
	EverGuard® Standard EZ Fascia EX	Galv. Steel (22–24 ga.), Aluminum (0.040–0.080)	EXT.	120" (3.05 m)	Single-Ply
	M-Weld™ EZ Fascia EX	Galv. Steel (22–24 ga.), Aluminum (0.040–0.080)	EXT.	120" (3.05 m)	Single-Ply/ Mod Bit/BUR
	M-Weld™ NP Fascia	Galv. Steel (22–24 ga.), Aluminum (0.040–0.080)	20 ga.	120" (3.05 m)	Single-Ply/ Mod Bit/BUR
	EverGuard® Snap-On Fascia	Galv. Steel (22–24 ga.), Aluminum (0.040–0.080)	22 ga., 24 ga.	120" (3.05 m)	Single-Ply
	M-Weld™ Gravel Stop MB Fascia Type B	Galv. Steel (22–24 ga.), Aluminum (0.040–0.080)	24 ga.	120" (3.05 m)	Mod Bit/BUR
	M-Weld™ Gravel Stop MB Fascia Type G	Galv. Steel (22–24 ga.), Aluminum (0.040–0.080)	24 ga.	120" (3.05 m)	Mod Bit/BUR
	EverGuard® Standard Gravel Stop Fascia	Galv. Steel (22–24 ga.), Aluminum (0.040–0.080)	24 ga.	120" (3.05 m)	Single-Ply
	EverGuard® Standard Drip Edge Fascia	Galv. Steel (22–24 ga.), Aluminum (0.040–0.080)	20 ga.	120" (3.05 m)	Single-Ply
	EverGuard® Extender	Galv. Steel (22–24 ga.), Aluminum (0.040–0.080)	24 ga.	120" (3.05 m)	Single-Ply
	EverGuard® Extender With Offset	Galv. Steel (22–24 ga.), Aluminum (0.040–0.080)	24 ga.	120" (3.05 m)	Single-Ply
COPING	M-Weld™ Snap-On Coping	Galv. Steel (22–24 ga.), Aluminum (0.040–0.080)	20 ga.	12" (305 mm)/ 40" (1,016 mm) OC	Single-Ply/ Mod Bit/BUR
	M-Weld™ Snap-On Coping Plus	Galv. Steel (22–24 ga.), Aluminum (0.040–0.080)	16 ga.	12" (305 mm)/ 40" (1,016 mm) OC	Single-Ply/ Mod Bit/BUR
	M-Weld™ Formed Coping	Galv. Steel (22–24 ga.)	20 ga.	120" (3.05 m)	Single-Ply/ Mod Bit/BUR
	M-Weld™ Formed Coping Plus	Galv. Steel (22–24 ga.), Aluminum (0.040–0.080)	16 ga.	120" (3.05 m)	Single-Ply/ Mod Bit/BUR
GUTTERS/ EDGEBOX	EverGuard® WR Box Gutter	Galv. Steel (22–24 ga.), Aluminum (0.040–0.080)	Extruded	24" (610 mm) OC	Single-Ply
	EverGuard® WR Offset Gutter	Galv. Steel (22–24 ga.), Aluminum (0.040–0.080)	Extruded	24" (610 mm) OC	Single-Ply
	EverGuard® WR Chamfer Gutter	Galv. Steel (22–24 ga.), Aluminum (0.040–0.080)	Extruded	24" (610 mm) OC	Single-Ply
	EverGuard® EdgeBox RI	Galv. Steel (20 ga.)	N/A	120" (3.05 m)	Single-Ply

Color Options

												
Statuary Bronze A-01	Concord Cream A-02	Redwood A-03										
												
Siam Blue A-04	Medium Bronze A-05	Sandstone A-06										
												
Mission Red A-07	Black A-08	Dove Gray A-09										
												
Rawhide A-10	Chocolate Brown A-11	Ascot White A-12										
												
Forest Green A-13	Patina Green A-14	Rocky Gray A-15										
												
Charcoal Gray A-16	*Bright Red A-17	Regal Blue A-18										
												
Turquoise A-19	Shale Gray A-20	Slate Blue A-21										
												
Bone White A-23	Hartford Green A-24	Boysenberry A-25										
	<div data-bbox="574 1575 1523 1822" data-label="Complex-Block"> <p>*Premium Finishes</p> <table border="0"> <tbody> <tr> <td></td> <td></td> </tr> <tr> <td>*Coppertone A-28</td> <td>*Antique Patina A-29</td> </tr> <tr> <td></td> <td></td> <td></td> </tr> <tr> <td>*Silversmith A-30</td> <td>*Champagne A-31</td> <td>*Titanium A-32</td> </tr> </tbody> </table> </div>				*Coppertone A-28	*Antique Patina A-29				*Silversmith A-30	*Champagne A-31	*Titanium A-32
												
*Coppertone A-28	*Antique Patina A-29											
												
*Silversmith A-30	*Champagne A-31	*Titanium A-32										
Sierra Tan A-26												
												
Hemlock Green A-27												

Colors shown are representations only. Actual color may vary. Always obtain actual metal color chip from your GAF Territory Manager prior to order.