

ROOF COATING TECHNOLOGIES

ACRYLICS

Elastomeric acrylic roof coatings provide excellent durability and can be installed over existing modified bitumen, built-up, structural concrete, metal, or single-ply installations. These coatings are reflective and very easy to install and maintain. GAF is the leader in acrylic roof coatings, having supplied nearly a billion square feet of product throughout the last five decades.

SILICONES

GAF supplies high-volume solids, premium elastomeric silicone coatings that provide superior weatherproofing, ultraviolet resistance, resistance to biological growth, and fire resistance over polyurethane foam insulation and other appropriate substrates. These products are also often used in high-moisture climates for their fast-drying characteristics and ponding water resistance.

URETHANES

Urethane technologies from GAF provide high abrasion, impact, and chemical resistance with simple installation characteristics. They allow for great versatility in protecting a wide range of substrates from the effects of weathering and moisture intrusion.

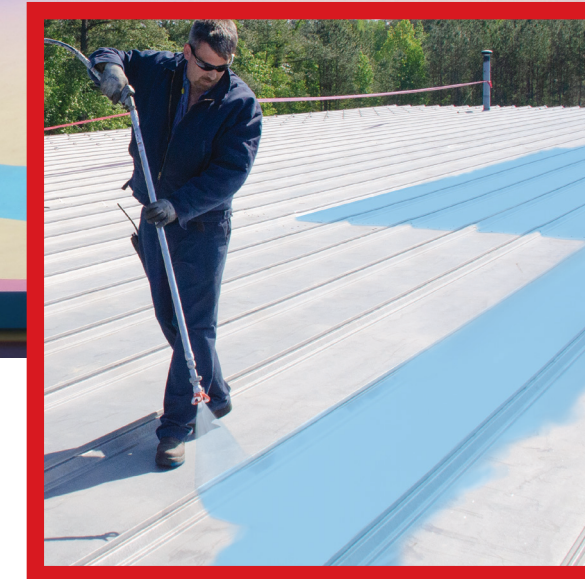
FLUOROPOLYMERS

Fluoropolymer coatings provide the ultimate in reflectivity, color stability, algae resistance, and weatherability over new or existing roof surfaces. Although they are highly flexible, they exhibit a tough, enamel-like finish that resists abrasion, biological growth, dirt, flame spread, acid rain, and extreme weather.



We protect what matters most™

GAF Roof Coatings Solutions Color Guide



From restoration to redesign, make a colorful statement with high-quality, high-performing GAF Coatings

We protect what matters most™

MORE COLOR FOR YOUR PROPERTY . . . MORE VALUE FOR YOU

The GAF line of Premium Coatings offers a wide variety of high-quality color coating solutions for commercial properties. Whether the application is changing a color, improving color fastness, or creating an appealing visual design, these products deliver proven durability and performance under challenging conditions while meeting your specific aesthetic needs.

Featuring highly reflective hues and rich, bold pigments, these versatile colorful coatings provide the ultimate in:

- color uniformity and stability
- gloss retention
- resistance to biological growth
- high reflectivity values (even in darker colors)
- waterproofing and weatherability
- flexibility
- cleanliness

Property owners and design professionals love the simple installation and proven track record of GAF Coating products. These reliable coating solutions mean no required tear-offs or new insulation, no disruption to building occupants, no lifting of AC units, no raising of drains, and no expensive equipment to install — *all of which means added value for your business!*

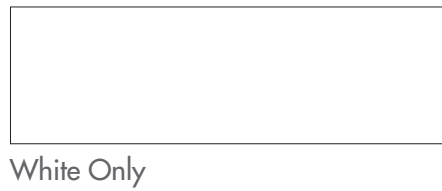
STANDARD ACRYLICS



Standard Acrylics (Roofshield®)



Standard Acrylics (Roof Coat)



PREMIUM ACRYLIC COATING SYSTEMS



Acrylic Top Coats (Roof Mate™ products/HydroStop® FinishCoat)



Acrylic Top Coats (Roofshield® I.S.)



Note: Roofshield® I.S. is available in White only.

SILICONES/URETHANES



Silicone Top Coats (Unisil HS II, Unisil II)

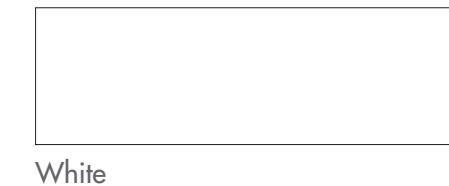


Urethane Base Coat*



**Base coat colors shown for representative purposes only. GAF recommends the application of a GAF top coat over all base coat applications. Only urethane top coats should be applied over urethane base coats.*

Urethane Top Coat

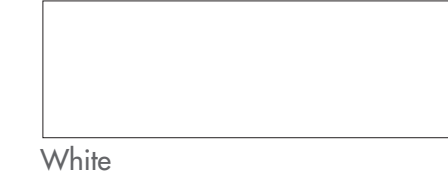


Note: The color samples in this guide may not precisely match their physical equivalents. Always refer to physical samples before making your color choices.

FLUOROPOLYMERS



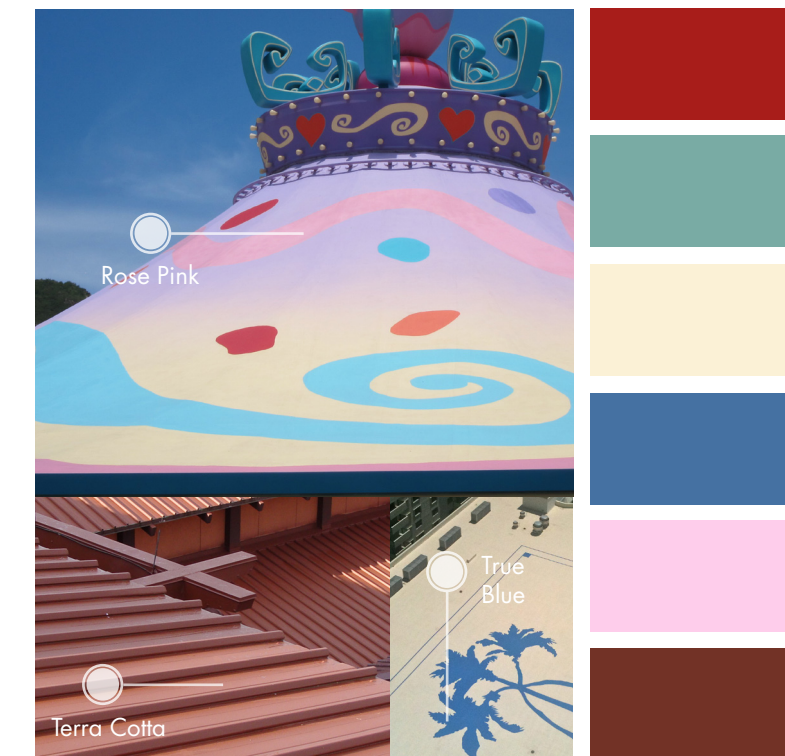
Fluoropolymer Top Coat — Standard Color (Kymax™)



- **CUSTOMIZED...** available in a wide range of custom colors
- **COLOR STABLE...** ideal for rooftop logos and company branding
- **DURABLE...** innovative technology based on Kynar Aquatec® PVDF fluoropolymer resin, designed to deliver the proven durability and performance of traditional Kynar® PVDF coatings

Kynar® and Kynar Aquatec® are registered trademarks of Arkema Inc.

Note: The color samples in this guide may not precisely match their physical equivalents. Always refer to physical samples before making your color choices.



Silicone Roof Coatings

Urethane Roof Coatings

Fluoropolymer Roof Coatings

Acrylic Roof Coatings

Acrylic Roof Coatings