

# DensGlass® Sheathing and Carlisle Air Barrier Systems

## Product Descriptions

**DensGlass® Sheathing** is an engineered exterior gypsum sheathing. It has a specially treated gypsum core and embedded fiberglass mats on both sides for superior moisture, fire and mold resistance. This product can remain exposed up to twelve months and is an ideal substrate for a wide variety of exterior claddings.

**DensArmor Plus® High-Performance Interior Panels** are specially engineered interior gypsum panels. With its treated core and embedded fiberglass mats front and back, this enhanced product provides superior fire, moisture, and mold resistance. This product should be finished with a mold-resistant finish system. DensArmor Plus panels are GreenGuard Indoor Air Quality Certified® and have been listed as microbial resistant by the GreenGuard Environmental Institute.

**Styrofoam™ Cavitymate™ SC** is an extruded polystyrene foam insulation board with shiplap edges along the long edges of the board. Controls condensation, corrects steel stud thermal short circuiting and improves the performance of insulating batting.

**The CCW-705 Vapor/Air Barrier System** is a 40 mil thick composite consisting of a 36 mil self-adhering rubberized asphalt membrane laminated to a 4 mil high density polyethylene film. A siliconized release liner prevents the material from sticking together in the roll and is easily removed for installation. CCW-705 is available in convenient widths of 18" (457 mm), 24" (610 mm) and 36" (914 mm). The factory controlled quality

assures uniform thickness on the job, providing an excellent air and moisture vapor barrier.

**The CCW-705-TWF Thru-Wall Flashing** is a 40 mil thick composite consisting of a 32 mil self-adhering rubberized asphalt membrane laminated to an 8 mil high density polyethylene film. A siliconized release liner prevents the material from sticking together in the roll, and is easily removed for installation. CCW-705-TWF is available in convenient widths of 12" (305 mm), 18" (457 mm), 24" (610 mm) and 36" (914 mm). The factory controlled quality assures uniform thickness on the job, while the inherent waterproofing properties of the rubberized asphalt membrane provide an excellent water barrier. The heavy polyethylene film is resistant to cuts and tears.

**Barriseal®** is a roller or spray applied, water-based asphalt emulsion modified with a blend of synthetic rubbers and special additives which cures to form a flexible, monolithic air/vapor barrier for many substrates in cavity wall construction. Barriseal-R is a roller grade product. Barriseal-S is applied using special spray equipment.

**Pre-Kleened™ EPDM, Thru-Wall Flashing** is a 40 mil EPDM membrane and is available in a variety of widths by 100' length. This material has been pre-washed, thus eliminating the need to remove talc during installation.

### Commercial Cavity Wall Assembly

Cold Climate Exterior Elevations other than EIFS

### Interior Gypsum Panel Manufacturer

Georgia-Pacific Gypsum LLC

### Interior Gypsum Panel Names

DensArmor Plus® High-Performance Interior Panels

### Metal Studs

4" (102 mm) or 6" (152 mm) deep galvanized steel

### Exterior Gypsum Sheathing Manufacturer

Georgia-Pacific Gypsum LLC

### Exterior Gypsum Sheathing Names

DensGlass® Sheathing

### Air Barrier Membrane Manufacturer

Carlisle Coatings & Waterproofing Inc.

### Air Barrier Membrane

40 mil air/vapor barrier

### Wall Insulation Manufacturer

Dow Chemical Company

### Wall Insulation Name

Styrofoam™ Cavitymate™ SC

| Product                        | 1/2" (12.7 mm) | 5/8" (15.9 mm) | 1" (25.4 mm) | 1.55" (39.4 mm) | 1¾" (44.5 mm) | 2" (50.8 mm) | 2⅝" (54.7 mm) | Type X <sup>1</sup> | SMOKE Developed <sup>2</sup> | FLAME Spread <sup>2</sup> |
|--------------------------------|----------------|----------------|--------------|-----------------|---------------|--------------|---------------|---------------------|------------------------------|---------------------------|
| <b>Gypsum Panels</b>           |                |                |              |                 |               |              |               |                     |                              |                           |
| DensGlass® Sheathing           | x              | x              |              |                 |               |              |               | x                   | 0                            | 15                        |
| DensArmor Plus® Interior Panel | x              | x              |              |                 |               |              |               | x                   | 0                            | 0                         |
| <b>Insulation</b>              |                |                |              |                 |               |              |               |                     |                              |                           |
| Styrofoam™ Cavitymate™ SC      |                |                | x            | x               |               | x            |               |                     |                              |                           |
| R-Value <sup>3</sup>           |                |                | 5            | 7.5             |               | 10           |               |                     |                              |                           |

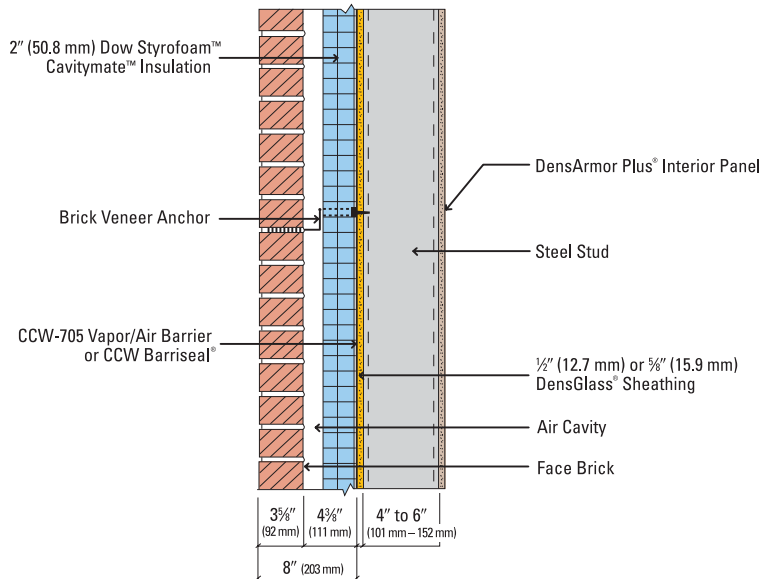
<sup>1</sup> Per ASTM C 1658

<sup>2</sup> Surface burning characteristics per ASTM E 84

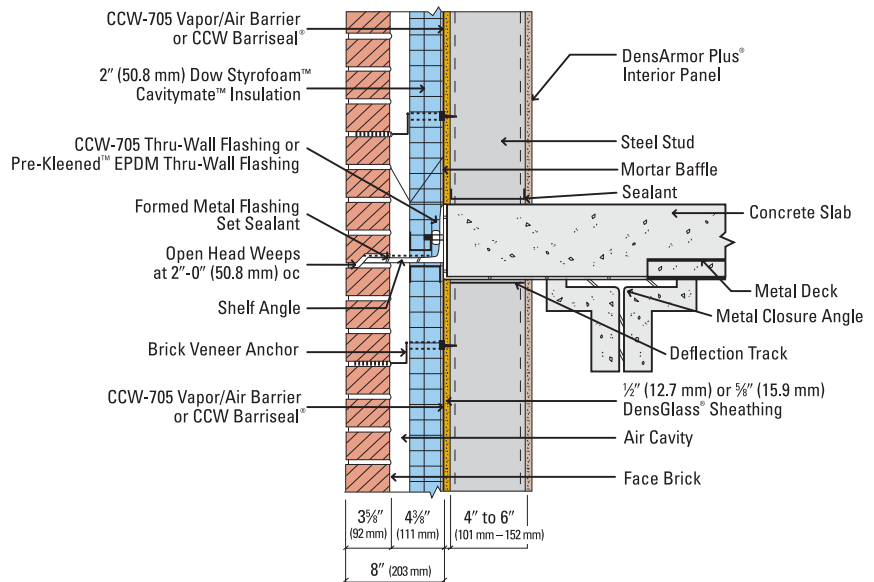
<sup>3</sup> Based on DOW's published literature.

# DensGlass® Sheathing and Carlisle Air Barrier Systems

The following are for illustration purposes only. Follow membrane manufacturer's installation guidelines and specifications for proper design and use. Georgia-Pacific Gypsum does not provide engineering services. Proper design and performance criteria provided by other parties.



Note: CCW Primer is required for the CCW-705 Vapor/Air Barrier.



U.S.A. – Georgia-Pacific Gypsum LLC  
 Canada – Georgia-Pacific Canada LP

**Sales Information & Order Placement**

U.S.A. Midwest: 1-800-876-4746  
 West: 1-800-824-7503  
 South: 1-800-327-2344  
 Northeast: 1-800-947-4497

CANADA Canada Toll Free: 1-800-387-6823  
 Quebec Toll Free: 1-800-361-0486

**Technical Information**

Georgia-Pacific Gypsum Technical Hotline  
 U.S.A. and Canada: 1-800-225-6119  
 www.gpgypsum.com

**TRADEMARKS** Unless otherwise noted, all trademarks are owned by or licensed to Georgia-Pacific Gypsum LLC. GREENGUARD and the GREENGUARD logo are registered certification marks used under license through the GREENGUARD Environmental Institute. STYROFOAM and CAVITYMATE are trademarks of Dow Chemical Company. BARRISEAL and PRE-KLEENED are trademarks of Carlisle Coatings & Waterproofing, Inc.

**WARRANTIES, REMEDIES AND TERMS OF SALE** For current warranty information for DensGlass Sheathing and DensArmor Plus interior panels please go to www.gpgypsum.com and select the product for warranty

information. All sales of DensGlass Sheathing and DensArmor Plus interior panels by Georgia-Pacific are subject to our Terms of Sale available at www.gpgypsum.com. Georgia-Pacific makes no representations or warranties regarding Carlisle Air Barrier Systems or any component (including Dow Styrofoam Cavitymate Insulation) other than DensGlass Sheathing and DensArmor Plus interior panels. For additional information concerning Carlisle Air Barrier Systems, please contact Carlisle Coatings & Waterproofing at 888-229-0199 or go to www.carlisle-ccw.com. For additional information concerning Dow Styrofoam Cavitymate Insulation, please contact Dow Chemical at 866-583-2583 or go to www.dow.com.

**UPDATES AND CURRENT INFORMATION** The information in this document may change without notice. Visit our website at www.gpgypsum.com for updates and current information.

**CAUTION:** For fire, safety and use information concerning DenGlass Sheathing and DensArmor Plus interior panels, go to www.gp.com/safetyinfo. For fire, safety and use information concerning Carlisle Air Barrier Systems, please contact Carlisle Coatings & Waterproofing at

888-229-0199 or go to www.carlisle-ccw.com. For fire, safety and use information concerning Dow Styrofoam Cavitymate Insulation, please contact Dow Chemical at 866-583-2583 or go to www.dow.com.

**HANDLING AND USE-CAUTION** DensGlass Sheathing and DensArmor Plus interior panels contain fiberglass facings which may cause skin irritation. Dust and fibers produced during the handling and installation of the product may cause skin, eye and respiratory tract irritation. Avoid breathing dust and minimize contact with skin and eyes. Wear long sleeve shirts, long pants and eye protection. Always maintain adequate ventilation. Use a dust mask or NIOSH/MSHA approved respirator as appropriate in dusty or poorly ventilated areas. For handling and use information concerning Carlisle Air Barrier Systems, please contact Carlisle Coatings & Waterproofing at 888-229-0199 or go to www.carlisle-ccw.com. For handling and use information concerning Dow Styrofoam Cavitymate Insulation, please contact Dow Chemical at 866-583-2583 or go to www.dow.com.

