

## Product Descriptions

**DensGlass® Sheathing** is an engineered exterior gypsum sheathing. It has a specially treated gypsum core and embedded fiberglass mats on both sides for superior moisture, fire and mold resistance. This product can remain exposed for up to twelve months and is an ideal substrate for a wide variety of exterior claddings.

**DensArmor Plus® High-Performance Interior Panels** are specially engineered interior gypsum panels. With its treated core and embedded fiberglass mats front and back, this enhanced product provides superior fire, moisture, and mold resistance. This product should be finished with a mold-resistant finish system. DensArmor Plus panels are GreenGuard Indoor Air Quality Certified® and have been listed as microbial resistant by the GreenGuard Environmental Institute.

**Styrofoam™ Cavitymate™ SC** is an extruded polystyrene foam insulation board with shiplap edges along the long edges of the board. Controls condensation, corrects steel stud thermal short circuiting and improves the performance of insulating batting.

**Perm-A-Barrier® Liquid** is a two-component, synthetic rubber, cold-vulcanized fluid applied air and vapor barrier membrane. It cures to form a resilient, monolithic, fully bonded elastomeric sheet. When installing Perm-A-Barrier Liquid over DensGlass Sheathing, no surface treatment is required.

**Perm-A-Barrier® Wall Membrane** is a tough, self-adhering, self-sealing waterproofing membrane for air and vapor barrier applications. Consisting of 36 mils of rubberized asphalt integrally bonded to a 4 mil high-density cross laminated polyethylene film, Perm-A-Barrier Wall Membrane is an impermeable air, vapor and water barrier. When installing Perm-A-Barrier Wall Membrane over DensGlass Sheathing, the surface of the sheathing must first be primed with Perm-A-Barrier WB Primer. Perm-A-Barrier WB Primer is a water-based primer, which imparts an aggressive, high-tack finish on the glass mat substrate of the sheathing.

**Perm-A-Barrier® Wall Flashing** is a tough, self-adhering, self-sealing waterproof through-wall flashing for cavity wall applications. Consisting of 32 mils of rubberized asphalt integrally bonded to an 8 mil high-density cross-laminated polyethylene film, Perm-A-Barrier Wall Flashing is designed to be strong and thick enough to resist punctures and tears in through-wall applications.

When installing Perm-A-Barrier Wall Flashing over DensGlass Sheathing, the surface of the sheathing must first be primed with Perm-A-Barrier WB Primer. Perm-A-Barrier WB Primer is a water-based primer, which imparts an aggressive, high-tack finish on the glass mat substrate of the sheathing.

### Commercial Cavity Wall Assembly

Cold Climate Exterior Elevations other than EIFS

### Interior Gypsum Panel Manufacturer

Georgia-Pacific Gypsum LLC

### Interior Gypsum Panel Names

DensArmor Plus® High-Performance Interior Panels

### Metal Studs

4" (102 mm) or 6" (152 mm) deep galvanized steel

### Exterior Gypsum Sheathing Manufacturer

Georgia-Pacific Gypsum LLC

### Exterior Gypsum Sheathing Names

DensGlass® Sheathing

### Air Barrier Membrane Manufacturer

Grace Construction Products

### Air Barrier Membrane

Perm-A-Barrier® Wall Membrane  
Perm-A-Barrier® Liquid

### Wall Insulation Manufacturer

Dow Chemical Company

### Wall Insulation Name

Styrofoam™ Cavitymate™ SC

Product	1/2" (12.7 mm)	5/8" (15.9 mm)	1" (25.4 mm)	1.55" (39.4 mm)	1¾" (44.5 mm)	2" (50.8 mm)	2⅝" (54.7 mm)	Type X <sup>1</sup>	SMOKE Developed <sup>2</sup>	FLAME Spread <sup>2</sup>
<b>Gypsum Panels</b>										
DensGlass® Sheathing	x	x						x	0	15
DensArmor Plus® Interior Panel	x	x						x	0	0
<b>Insulation</b>										
Styrofoam™ Cavitymate™ SC			x	x		x				
R-Value <sup>3</sup>			5	7.5		10				

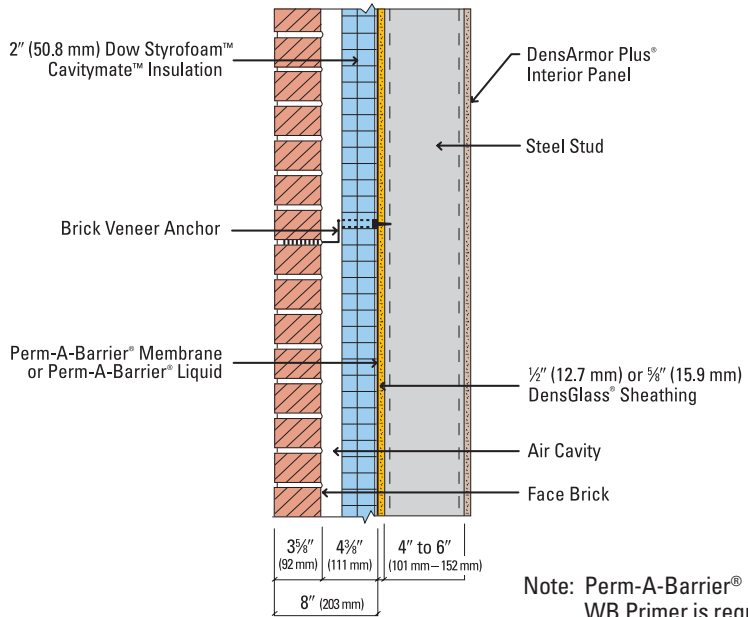
<sup>1</sup> Per ASTM C 1658

<sup>2</sup> Surface burning characteristics per ASTM E 84

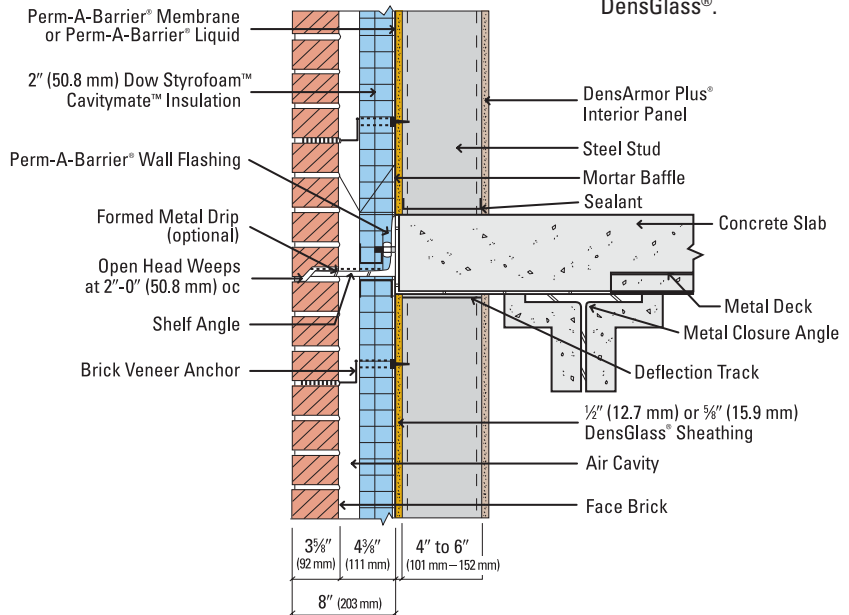
<sup>3</sup> Based on DOW's published literature.

# DensGlass® Sheathing and Grace Construction Products Air Barrier Systems

The following are for illustration purposes only. Follow membrane manufacturer's installation guidelines and specifications for proper design and use. Georgia-Pacific Gypsum does not provide engineering services. Proper design and performance criteria provided by other parties.



Note: Perm-A-Barrier® WB Primer is required for application of membrane to DensGlass®.



U.S.A. – Georgia-Pacific Gypsum LLC  
 Canada – Georgia-Pacific Canada LP

**Sales Information & Order Placement**

U.S.A. Midwest: 1-800-876-4746  
 West: 1-800-824-7503  
 South: 1-800-327-2344  
 Northeast: 1-800-947-4497

CANADA Canada Toll Free: 1-800-387-6823  
 Quebec Toll Free: 1-800-361-0486

**Technical Information**

Georgia-Pacific Gypsum Technical Hotline  
 U.S.A. and Canada: 1-800-225-6119  
 www.gpgypsum.com

**TRADEMARKS** Unless otherwise noted, all trademarks are owned by or licensed to Georgia-Pacific Gypsum LLC. STYROFOAM and CAVITYMATE are trademarks of Dow Chemical Company. PERM-A-BARRIER is a registered trademark of W.R. Grace & Co. GREENGUARD, is a registered certification mark used under license through the GREENGUARD Environmental Institute.

**WARRANTIES, REMEDIES AND TERMS OF SALE** For current warranty information for DensGlass Sheathing and DensArmor Plus interior panels please go to www.gpgypsum.com and select the product for warranty information. All sales of DensGlass Sheathing and

DensArmor Plus interior panels by Georgia-Pacific are subject to our Terms of Sale available at www.gpgypsum.com. Georgia-Pacific makes no representations or warranties regarding Grace Construction Products' Air Barrier Systems or any component (including Dow Styrofoam Cavitymate Insulation) other than DensGlass Sheathing and DensArmor Plus interior panels. For additional information concerning Grace Construction Products' Air Barrier Systems, please contact Grace Construction Products or go to www.na.graceconstruction.com. For additional information concerning Dow Styrofoam Cavitymate Insulation, please contact Dow Chemical at 866-583-2583 or go to www.dow.com.

**UPDATES AND CURRENT INFORMATION** The information in this document may change without notice. Visit our website at www.gpgypsum.com for updates and current information.

**CAUTION:** For fire, safety and use information concerning DensGlass Sheathing and DensArmor Plus interior panels, go to www.gp.com/safetyinfo. For fire, safety and use information concerning Grace Construction Products' Air Barrier Systems, please contact Grace Construction Products or go to www.

na.graceconstruction.com. For fire, safety and use information concerning Dow Styrofoam Cavitymate Insulation, please contact Dow Chemical at 866-583-2583 or go to www.dow.com.

**HANDLING AND USE-CAUTION** DensGlass Sheathing and DensArmor Plus interior panels contain fiberglass facings which may cause skin irritation. Dust and fibers produced during the handling and installation of the product may cause skin, eye and respiratory tract irritation. Avoid breathing dust and minimize contact with skin and eyes. Wear long sleeve shirts, long pants and eye protection. Always maintain adequate ventilation. Use a dust mask or NIOSH/MSHA approved respirator as appropriate in dusty or poorly ventilated areas. For handling and use information concerning Grace Construction Products' Air Barrier Systems, please contact Grace Construction Products or go to www.na.graceconstruction.com. For handling and use information concerning Dow Styrofoam Cavitymate Insulation, please contact Dow Chemical at 866-583-2583 or go to www.dow.com.

