

# DensGlass® Sheathing and Tremco Air Barrier Systems

## Product Descriptions

**DensGlass® Sheathing** is an engineered exterior gypsum sheathing. It has a specially treated gypsum core and embedded fiberglass mats on both sides for superior moisture, fire and mold resistance. This product can remain exposed for up to twelve months and is an ideal substrate for a wide variety of exterior claddings.

**DensArmor Plus® High-Performance Interior Panels** are specially engineered interior gypsum panels. With its treated core and embedded fiberglass mats front and back, this enhanced product provides superior fire, moisture, and mold resistance. This product should be finished with a mold-resistant finish system. DensArmor Plus panels are GreenGuard Indoor Air Quality Certified® and have been listed as microbial resistant by the GreenGuard Environmental Institute.

**Styrofoam™ Cavitymate™ SC** is an extruded polystyrene foam insulation board with shiplap edges along the long edges of the board. Controls condensation, corrects steel stud thermal short circuiting and improves the performance of insulating batting.

**ExoAir™ 110/110LT** is a self-adhered, 40 mil thick air and vapor barrier membrane. The membrane consists of 36 mils of self-adhering SBS rubberized asphalt laminated to a 4 mil cross-laminated high-density polyethylene film with a siliconized release liner. The ExoAir 110/110LT membrane is an impermeable air, vapor and water barrier. When adhering ExoAir 110/110LT to the surface of DensGlass Sheathing,

it must first be primed. Use ExoAir Primer to ensure a clean, sound surface to receive the membrane.

**ExoAir™ 120 Fluid-Applied Air & Vapor Barrier Membrane** is a single component, seamless, fully adhered membrane. It is a polymer-modified emulsion and can be applied by spray or roller. ExoAir 120 is an impermeable air, vapor and water barrier. When applying over DensGlass Sheathing, joints in exterior sheathing panels should be treated with compatible Tremco sealants, and no priming is required. ExoAir 120 offers excellent adhesion to the surface of DensGlass panels. ExoAir 120 is used in conjunction with other system components to bridge to adjacent structural building components.

**ExoAir™ 220 Fluid-Applied Vapor Permeable Air Barrier Membrane** is a single component, seamless, fully adhered membrane. It is a polymer-modified emulsion and designed for spray or roller application. The membrane is also an air and water barrier.

**ExoAir™ TWF** is a self-adhered 40 mil (Thru-Wall Flashing) membrane. The membrane consists of 32 mils of self-adhering SBS rubberized asphalt laminated to an 8 mil cross-laminated, high-density polyethylene film with a siliconized release liner. The ExoAir TWF membrane is an impermeable air, vapor and water barrier. When adhering ExoAir TWF to the surface of DensGlass Sheathing, it must first be primed. Use ExoAir Primer to ensure a clean, sound surface to receive the membrane.

(continued)

Product	1/2" (12.7 mm)	5/8" (15.9 mm)	1" (25.4 mm)	1.55" (39.4 mm)	1¾" (44.5 mm)	2" (50.8 mm)	2½" (54.7 mm)	Type X <sup>1</sup>	SMOKE Developed <sup>2</sup>	FLAME Spread <sup>2</sup>
<b>Gypsum Panels</b>										
DensGlass® Sheathing	x	x						x	0	15
DensArmor Plus® Interior Panel	x	x						x	0	0
<b>Insulation</b>										
Styrofoam™ Cavitymate™ SC			x	x		x				
R-Value <sup>3</sup>			5	7.5		10				

<sup>1</sup> Per ASTM C 1658

<sup>2</sup> Surface burning characteristics per ASTM E 84

<sup>3</sup> Based on DOW's published literature.

### Commercial Cavity Wall Assembly

Cold Climate Exterior Elevations other than EIFS

### Interior Gypsum Panel Manufacturer

Georgia-Pacific Gypsum LLC

### Interior Gypsum Panel Names

DensArmor Plus® High-Performance Interior Panels

### Metal Studs

4" (102 mm) or 6" (152 mm) deep galvanized steel

### Exterior Gypsum Sheathing Manufacturer

Georgia-Pacific Gypsum LLC

### Exterior Gypsum Sheathing Names

DensGlass® Sheathing

### Air Barrier Membrane Manufacturer

Tremco Commercial Sealants & Waterproofing

### Air Barrier Membrane

ExoAir™ 110/110LT Membrane  
ExoAir™ 120 Fluid-Applied AVB Membrane  
ExoAir™ 220 Fluid-Applied VP Membrane  
ExoAir™ TWF Membrane

### Wall Insulation Manufacturer

Dow Chemical Company

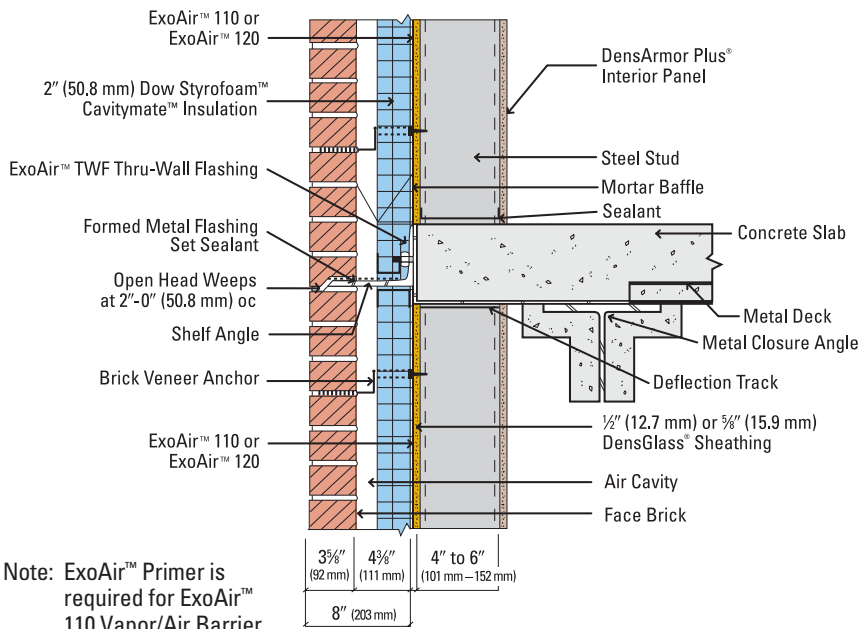
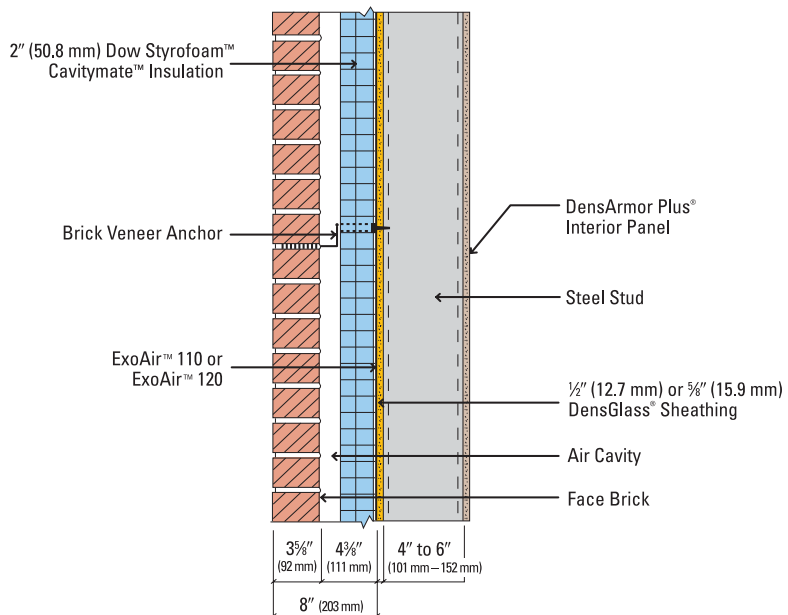
### Wall Insulation Name

Styrofoam™ Cavitymate™ SC

# DensGlass® Sheathing and Tremco Air Barrier Systems

**Additional ExoAir™ Air Barrier System Components** are available, such as Spectrem 1 Silicone Sealant and Proglaze ETA (Engineered Transition Assemblies) designed to seal critical wall to window/curtain wall connections.

The following are for illustration purposes only. Follow membrane manufacturer's installation guidelines and specifications for proper design and use. Georgia-Pacific Gypsum does not provide engineering services. Proper design and performance criteria provided by other parties.



Note: ExoAir™ Primer is required for ExoAir™ 110 Vapor/Air Barrier

U.S.A. – Georgia-Pacific Gypsum LLC  
Canada – Georgia-Pacific Canada LP

**Sales Information & Order Placement**

U.S.A. Midwest: 1-800-876-4746  
West: 1-800-824-7503  
South: 1-800-327-2344  
Northeast: 1-800-947-4497

CANADA Canada Toll Free: 1-800-387-6823  
Quebec Toll Free: 1-800-361-0486

**Technical Information**

Georgia-Pacific Gypsum Technical Hotline  
U.S.A. and Canada: 1-800-225-6119  
www.gpgypsum.com

**TRADEMARKS** Unless otherwise noted, all trademarks are owned by or licensed to Georgia-Pacific Gypsum LLC. GREENGUARD and the GREENGUARD logo are registered certification marks used under license through the GREENGUARD Environmental Institute. STYROFOAM and CAVITYMATE are trademarks of Dow Chemical Company. EXOAIR is a trademark of Tremco Incorporated.

**WARRANTIES, REMEDIES AND TERMS OF SALE** For current warranty information for DensGlass Sheathing and DensArmor Plus interior panels please go to www.gpgypsum.com and select the product for warranty

information. All sales of DensGlass Sheathing and DensArmor Plus interior panels by Georgia-Pacific are subject to our Terms of Sale available at www.gpgypsum.com. Georgia-Pacific makes no representations or warranties regarding Tremco Air Barrier Systems or any component (including Dow Styrofoam Cavitymate Insulation) other than DensGlass Sheathing and DensArmor Plus interior panels. For additional information concerning Tremco Air Barrier Systems, please contact Tremco at 866-209-2404 or go to www.tremcosealants.com. For additional information concerning Dow Styrofoam Cavitymate Insulation, please contact Dow Chemical at 866-583-2583 or go to www.dow.com.

**UPDATES AND CURRENT INFORMATION** The information in this document may change without notice. Visit our website at www.gpgypsum.com for updates and current information.

**CAUTION:** For fire, safety and use information concerning DensGlass Sheathing and DensArmor Plus interior panels, go to www.gp.com/safetyinfo. For fire, safety and use information concerning Tremco Air Barrier Systems, please contact Tremco at

866-209-2404 or go to www.tremcosealants.com. For fire, safety and use information concerning Dow Styrofoam Cavitymate Insulation, please contact Dow Chemical at 866-583-2583 or go to www.dow.com.

**HANDLING AND USE-CAUTION** DensGlass Sheathing and DensArmor Plus interior panels contain fiberglass facings which may cause skin irritation. Dust and fibers produced during the handling and installation of the product may cause skin, eye and respiratory tract irritation. Avoid breathing dust and minimize contact with skin and eyes. Wear long sleeve shirts, long pants and eye protection. Always maintain adequate ventilation. Use a dust mask or NIOSH/MSHA approved respirator as appropriate in dusty or poorly ventilated areas. For handling and use information concerning Tremco Air Barrier Systems, please contact Tremco at 866-209-2404 or go to www.tremcosealants.com. For handling and use information concerning Dow Styrofoam Cavitymate Insulation, please contact Dow Chemical at 866-583-2583 or go to www.dow.com.

