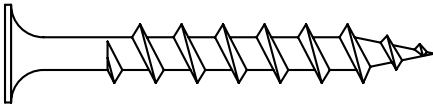


INTERIOR WOOD**Product #230A****Bugle Head GRABBER® USA** (1 OF 2)

Attaches gypsum board to wood. Extra sharp point and threads make driving easier and provide better holding power.

Finish - Black/Gray Phosphate



Bugle
Head



GRABBER
Point



#2 Phillips
Drive

**APPLICATIONS**

- ▶ 3/8", 1/2", and 5/8" single-layer gypsum board to wood studs and joists
- ▶ 1/2" and 5/8" double-layer gypsum board to wood studs and joists
- ▶ Insulation to wood
- ▶ OSB or plywood to wood
- ▶ Wood to wood applications

SPECIFICATIONS

- ▶ Gauge – #6 to #10
- ▶ Lengths – 1" to 4"
- ▶ Head Type – Bugle
- ▶ Recess Type – #2 Phillips
- ▶ Thread Type – Single Lead
- ▶ Finish – Gray Phosphate. Also available in Yellow Zinc and GRABBERGARD®
- ▶ GRABBER® screws are manufactured in an ISO 9001 and ISO 14001

PRODUCT FEATURES

- ▶ Superior holding power and ease of penetration
- ▶ A coarse thread screw for general interior applications
- ▶ 8 threads per inch
- ▶ Extra sharp, single lead 23° GRABBER point, designed to penetrate quickly and easily
- ▶ #2 Phillips recess drive

INSTALLATION GUIDELINES

- ▶ Use a standard screwgun with a depth-sensitive nose piece. Suggested screwgun specification for optimal performance – 4 amps minimum and 2500 RPM.
- ▶ The Bugle head is fully seated when the head is flush with the work surface.
- ▶ Overdriving may result in failure of the fastener or stripout of the work surface.
- ▶ For wood to wood connections, minimum penetration should be 7 diameters (e.g. 1-1/4" for #8 fastener)

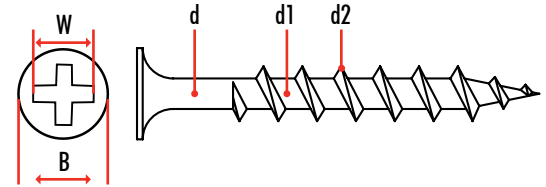
INTERIOR WOOD

Product #230A

Bugle Head GRABBER® USA (2 OF 2)

PRODUCT SIZES AND ORDERING INFORMATION

Catalog No.	Gauge/Length	Length Metric	Quantity Per Carton	Weight Per Carton
100A	#6x1"	25 mm	10 M	32.00(lbs)
200A	#6x1-1/8"	28 mm	10 M	33.00(lbs)
300A	#6x1-1/4"	32 mm	8 M	32.00(lbs)
400A	#6x1-5/8"	41 mm	5 M	22.00(lbs)
900A8	#8x2-1/2"	63 mm	2.5 M	25.00(lbs)



STANDARD CORROSION TEST RESULTS

Finish	Test	Standard/Protocol	Results
Black/Gray Phosphate	Salt Spray Results	ASTM B117	24 hours, No Red Rust

PRODUCT DIMENSIONS (MILLIMETERS)

Gauge	B Head Dia	Recess Depth	W Gauging Width	d Shank Dia	d1 Minor Dia	d2 Major Dia	TPI
#6	8.00	0.50	#2	2.68	2.25	3.75	8
	8.50	0.80		2.72	2.45	3.95	
#7	8.00	0.50	#2	2.93	2.50	4.05	8
	8.50	0.80		2.97	2.80	4.30	
#8	8.00	0.50	#2	3.18	2.80	4.30	8
	8.50	0.80		3.22	3.10	4.60	
#10	8.50	0.50	#2	3.78	3.20	5.00	8

All GRABBER® screw products are manufactured in facilities that are ISO 9001 certified. The fasteners comply with ASTM C1002 performance requirements. ©2012 GRABBER Construction Products, Inc. GRABBER®, STREAKER®, DRIVALL®, LOX®, GRABBERGARD® and SCAVENGER® are registered trademarks of Grabber Construction Products, Inc.

