

**Perfect arches every time
in minutes, not hours**



**Perfect for doors, windows,
ceiling treatments, barrel vaults . . .
and more!**

- 100% round arches every time
- You save time and money
- Interior or exterior
- As easy as 1-2-3
- Maintenance-free polymer
- Waterproof, easy to cut
- Uniform, durable, workable



Doors, windows, ceilings . . . whatever you use Arch-It for, you save time and money

Doorways

Arched doorways add a great deal of panache to just about any style of home. And now they're available at lower cost, for increased profitability.

Opening's a little too small?

If need be, the top ends can be overlapped or sawed off. If the opening is a little wide, the top ends can be separated by up to a few inches, and the finished arch will look perfectly round. The result: the ultimate in flexibility for you, no matter what size openings the plans call for.



Barrel vaults, alcoves and more

Once you get used to how easy it is to use Arch-It, all kinds of possibilities open up. Alcoves (such as the one at left) and similar architectural treatments suddenly become a whole lot easier and more cost-effective.

Let your mind roam . . .

Take a look at the double arches in the doorway at left. How would that opening look with a barrel vault? With Arch-It, you'd be astonished how easy it can be.



Ceiling treatments

Some of the really good looking ceilings called for in many upscale homes can be difficult and time-consuming to create from scratch. Use Arch-It to get exactly the look you want — and at a fraction of the cost.

Just turn 90°

For a moment it doesn't appear that ceilings and doorways have very much in common. But once you've framed in a drop ceiling, you'll find it's as easy to use Arch-It sideways, to create a perfect curve in a ceiling, as it is to create a perfect doorway or window opening.



Windows

Interiors, exteriors — for a window with a distinctive arch at the top, there's no quicker, easier or more attractive way to get the job done than with Arch-It.

Wide range of sizes

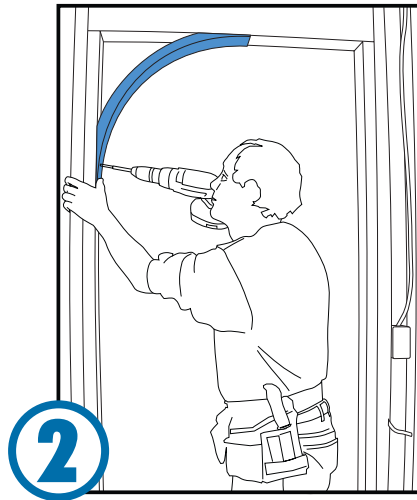
just about any size you need can be accommodated. We're adding new sizes all the time, and custom orders are available too. Call for details.



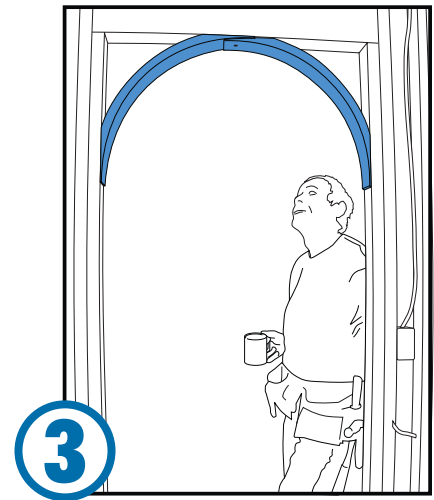
With Arch-It perfect arches are as easy as 1-2-3



Frame in opening in the usual way, then measure down half the width of the arch.



Line up arch segments and screw them in place.



That's it — you're done. . .

Go do another one!

Arch-It has a solution for nearly every opening

Arch-It Sizing Chart

| Item Number | Description | Application |
|-------------|-----------------------|---------------------------|
| ARCHA26 | ARCH, 2'6" HALF ROUND | FOR 26-32" ROUGH OPENING |
| ARCHA30 | ARCH, 3' HALF ROUND | FOR 32-38" ROUGH OPENING |
| ARCHA40 | ARCH, 4' HALF ROUND | FOR 42-50" ROUGH OPENING |
| ARCHA50 | ARCH, 5' HALF ROUND | FOR 52-62" ROUGH OPENING |
| ARCHA60 | ARCH, 6' HALF ROUND | FOR 64-72" ROUGH OPENING |
| ARCHA80 | ARCH, 8' HALF ROUND | FOR 88-99" ROUGH OPENING |
| ARCHB30 | ARCH, 3' EYE-BROW | FOR 30-44" ROUGH OPENING |
| ARCHB40 | ARCH, 4' EYE-BROW | FOR 44-53" ROUGH OPENING |
| ARCHB50 | ARCH, 5' EYE-BROW | FOR 53-67" ROUGH OPENING |
| ARCHB60 | ARCH, 6' EYE-BROW | FOR 67-77" ROUGH OPENING |
| ARCHB70 | ARCH, 7' EYE-BROW | FOR 77-89" ROUGH OPENING |
| ARCHB80 | ARCH, 8' EYE-BROW | FOR 89-101" ROUGH OPENING |



"If it's worth building, it's worth **GRABBER**®"

www.grabberman.com