



Submittal Sheet #CB60135

#CB60

Product:	Item#	Description	Unit Pack
	CB60	GRABBER® Steel Column & Beam Drywall Clips	

Description: 2 Inch Wide X 2-1/2 Inch High X 2 Inch Deep. 25 Gauge G60 Galvanized Steel

Directions:

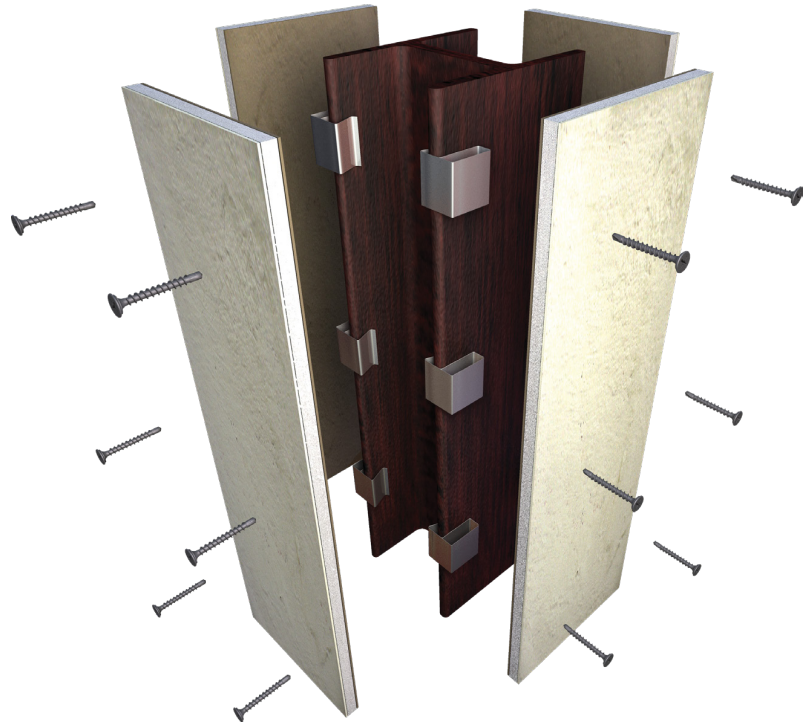
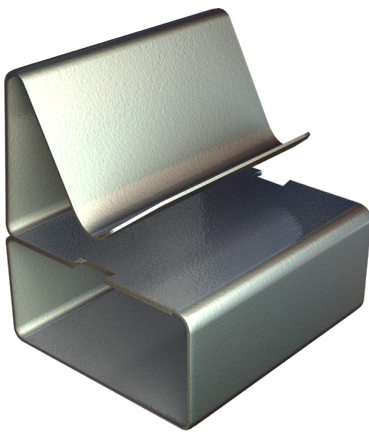
- (1) Hour Rating Is X528.
- (2) Hour Ratings Are X517, X520, X523, X528, X535.
- (3) Hour Rating Are X513, X528, X535.
- (4) Hour Rating Are X522, X535.

For The Beam Fire Resistance Index Design Numbers

- (2) Hour Rating Is N501, and N502.
- (3) Hour Rating Is N505.



Grabber Column and Beam Clip System





Submittal Sheet #CB60135

SUBMITTAL APPROVALS:

JOB NAME

CONTRACTOR

DATE

TRADEMARKS:

The following trademark used herein is owned by John Wagner Associates, Inc.: GRABBER

NOTICE:

We shall not be liable for incidental and consequential damages, directly or indirectly sustained, nor for any loss caused by application of these goods not in accordance with current printed instruction or for other than the intended use. Our Liability is expressly limited to replacement of defective goods. Any claim shall be deemed waived unless made in writing to us within thirty (30) days of the date it was or reasonably should have been discovered.



Submittal Sheet #CB60135

#CB60



Features:

Fireproof structural steel columns and create a "finished space saving enclosure" with this simple little clip.

- No tools required...snaps on by hand!
- Application time: 75 seconds!
- 12 operations per column vs 80 operations
- Saves you 65% in production time!
- Half the material!

PRODUCT SPECIFICATIONS

Clips per box 60