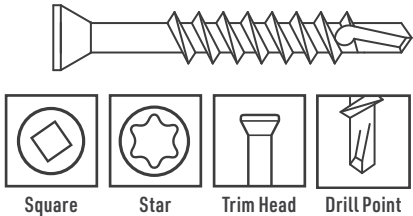
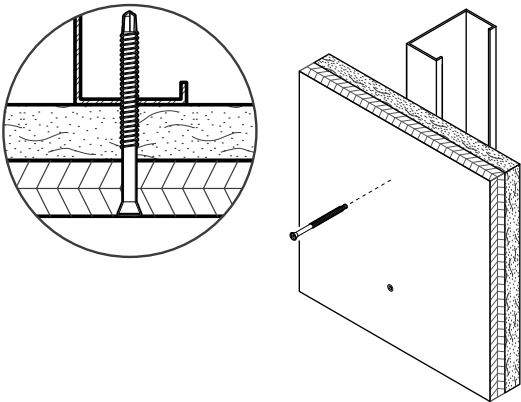


# Trim Head Driller - Interior

## Wood Trim Over Gypsum Board to Heavy-Gauge Steel



**Description** Attaches wood trim over single- or double-layer gypsum board to heavy-gauge steel.

### Specifications

**Size | Gauge:** #6 to #8  
**Length:** 1 in. to 3 in.  
**Head Type:** Trim Head  
**Recess Type:** #1 Square, T20 Star  
**Thread Type:** Fine, Single Lead  
**Finish:** Clear Zinc, Phosphate

**Quality Assurance:** Grabber® fasteners are manufactured in ISO 9001 and ISO 14001 certified and approved factories.  
**LEED Reporting:** The post-consumer recycled steel content is 25%.  
**Compliance:** The fasteners comply with ASTM C1513 performance requirements.

### Applications

- Attaches wood trim over single- or double-layer gypsum board to heavy-gauge steel studs and track

### Installation

- Use a standard screw gun with a depth-sensitive nose piece. Suggested screw gun specification for optimal performance: sizes #6 to #8, up to 2,500 RPM.
- Because of significantly higher torque output, care and caution should be exercised when using an impact driver; otherwise, screw failure or spin-out may occur.
- The trim head is fully seated when it is flush with or just below the work surface.
- The fastener must penetrate beyond the steel three full thread pitches.
- Overdriving may result in failure of the fastener.

### Features

- Self-tapping drill point is designed for penetration into heavy-gauge steel.
- The trim head leaves a finished surface.
- The square recess is designed for secure bit engagement in trim to wood or light-gauge steel applications.
- Consistently formed extra-sharp drill point starts and drills easily into heavy-gauge steel.

# Trim Head Driller - Interior

## Wood Trim Over Gypsum Board to Heavy-Gauge Steel

**GRABBER®**  
CONSTRUCTION PRODUCTS

Heavy-Gauge Steel

Wood Trim Over Gypsum Board to Heavy-Gauge Steel

### Standard Corrosion Test Results

Finish	Test	Standard/Protocol	Results
Phosphate	Salt Spray	ASTM B117	24 hrs., no red rust
Clear Zinc	Salt Spray	ASTM B117	12 hrs., no red rust

Note: Salt Spray Testing (SST) results are not intended to predict corrosion in real-world environments. The ASTM B117 standard for SST is recognized industry-wide as an effective tool for comparing different metals and different metal coatings in a tightly controlled, highly corrosive environment for specific periods of time. For more information about corrosion resistance, see the Grabber Guide to Corrosion Resistance for Fasteners.

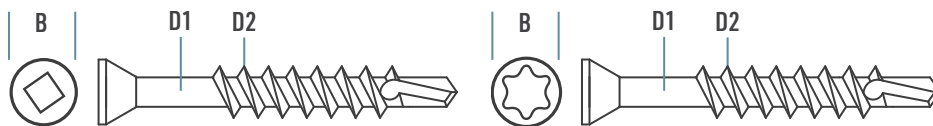
### Pull-Out Test Data<sup>1</sup>

Screw Gauge	TPI <sup>2</sup>	Steel Gauge	Design Thickness	Tension	Shear
#6	19	18	0.0451 in.	79 lbs.	224 lbs.
		16	0.0566 in.	144 lbs.	315 lbs.
		14	0.0713 in.	181 lbs.	446 lbs.
		12	0.1017 in.	258 lbs.	759 lbs.
		10	0.1242 in.	315 lbs.	1,001 lbs.
#7	19	18	0.0451 in.	87 lbs.	234 lbs.
		16	0.0566 in.	157 lbs.	330 lbs.
		14	0.0713 in.	198 lbs.	466 lbs.
		12	0.1017 in.	283 lbs.	794 lbs.
		10	0.1242 in.	345 lbs.	1,069 lbs.
#8	18	18	0.0451 in.	94 lbs.	244 lbs.
		16	0.0566 in.	171 lbs.	344 lbs.
		14	0.0713 in.	215 lbs.	486 lbs.
		12	0.1017 in.	307 lbs.	827 lbs.
		10	0.1242 in.	375 lbs.	1,114 lbs.

<sup>1</sup>Test data values reported are allowable as determined by calculations and industry established test criteria, such as ICC-ES Acceptance Criteria and ASTM test standards. Please contact Grabber for detailed information about testing performed for specific products or if ultimate values are needed.

### Sheet Steel Gauges

Gauge No.	Design Thickness	Millimeter Equivalent
25	0.0188 in.	0.4775 mm
20	0.0346 in.	0.8788 mm
18	0.0451 in.	1.1455 mm
16	0.0566 in.	1.4376 mm
14	0.0713 in.	1.8110 mm
12	0.1017 in.	2.5832 mm
10	0.1242 in.	3.1547 mm



### Product Dimensions

Screw Gauge	B Head Dia.	Recess	D1 Minor Dia.	D2 Major Dia.	TPI <sup>2</sup>
#6	0.219 in.	T20 Star	0.098 in.	0.138 in.	19
#7	0.219 in.	#1 Square	0.100 in.	0.151 in.	19
#8	0.219 in.	#1 Square	0.116 in.	0.164 in.	18

<sup>2</sup>TPI stands for Threads Per Inch. This is a count of the number of threads per inch measured along the length of a fastener.

# Trim Head Driller - Interior

## Wood Trim Over Gypsum Board to Heavy-Gauge Steel



### Ordering Information and Product Options

Item No.	Size	Recess	Head Diameter	TPI	Quantity	Weight	Special Features
Phosphate							
17SD	7 x 1 5/8 in.	#1 Square	0.219 in.	19	5,000	27 lb.	
18SD	7 x 2 1/4 in.	#1 Square	0.219 in.	19	4,000	30 lb.	
17SD76	8 x 3 in.	#1 Square	0.219 in.	18	2,000	24 lb.	
17SD1006	6 x 1 in.	T20 Star	0.219 in.	19	10,000	35 lb.	
Clear Zinc							
17SDZ	7 x 1 5/8 in.	#1 Square	0.219 in.	19	5,000	27 lb.	
18SDZ	7 x 2 1/4 in.	#1 Square	0.219 in.	19	4,000	30 lb.	
17SD76Z	8 x 3 in.	#1 Square	0.219 in.	18	2,000	24 lb.	

Note: Product availability is subject to change without prior notice and the availability of products may differ from what is printed in literature and displayed on our website. The items listed are bulk size. Most are also available in smaller package sizes such as 5 lb. and 1 lb. Contact your local Grabber Branch or GrabberPro for more information.

Trim Head Driller - Interior  
PS1014 USA-ENG/Rev. 02-25

GRABBER CONSTRUCTION PRODUCTS, INC.  
5255 W 11000 N., STE 100  
HIGHLAND, UT 84003

(800) 477-8876 | GrabberPro.com

**SAFETY FIRST:** Wear appropriate personal protective equipment. Read applicable SDS and literature before handling and installation.

**TECHNICAL INFORMATION:** Technical information contained herein is furnished without charge or obligation and is given and accepted at the recipient's sole risk. Because conditions of use may vary and are beyond our control, Grabber Construction Products makes no representation about, and is not responsible or liable for, the accuracy or reliability of data associated with uses of any product described herein. Grabber Construction Products reserves the right to modify this document without prior notice.

© 2025 Grabber Construction Products, Inc. | All rights reserved | Printed in U.S.A.  
The trademarks Grabber, and Stylized G on Grabber Fasteners, are trademarks of Grabber Construction Products, Inc.

