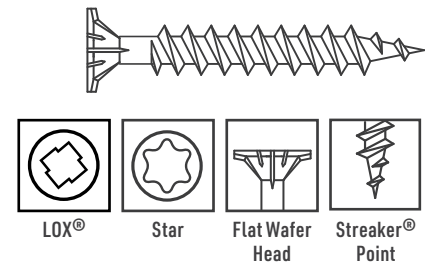
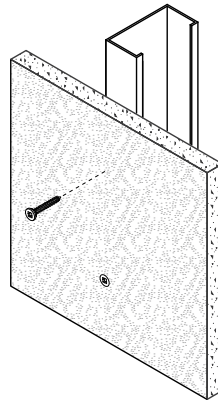
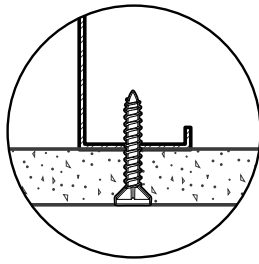


Flat Wafer Head Streaker® - Exterior

High-Density Board, Cement Board to
Light-Gauge Steel or Wood

GRABBER®
CONSTRUCTION PRODUCTS



Description Attaches high-density sheathing and cement board to light-gauge steel or wood.

Specifications

Size | Gauge: #8
Length: 1 1/4 in. to 2 3/8 in.
Head Type: Flat Wafer Head
Recess Type: #2 LOX®, T25 Star
Thread Type: Fine Thread
Finish: GrabberGard®

Quality Assurance: Grabber® fasteners are manufactured in ISO 9001 and ISO 14001 certified and approved factories.

LEED Reporting: The post-consumer recycled steel content is 25%.

Compliance: The fasteners comply with ASTM C1513 performance requirements.

Applications

- Cement board to light-gauge steel or wood
- High-density board to light-gauge steel or wood
- Tile backers to light-gauge steel or wood

Installation

- Use a standard screw gun with a depth-sensitive nose piece. Suggested screw gun specification for optimal performance: size #8, up to 4,000 RPM.
- The screw head is fully seated when it is flush with the surface of the material.
- The fastener must penetrate beyond the steel three full thread pitches.
- The fastener should penetrate the wood at least 3/4 in., in accordance with AWC-NDS for wood construction.
- Overdriving may result in failure of the fastener.

Features

- Flat wafer head design provides for a larger load-bearing surface and better holding power.
- Underhead nibs facilitate seating and minimize strip-out.
- LOX® recess was designed for high-torque applications and will not strip out like most other recesses.
- Grabber's T25 Star recess provides consistent, reliable performance in wood to heavy-gauge steel applications.
- Grabber's extra-sharp Streaker® point starts immediately and is much less likely to flop over.
- GrabberGard® exterior-grade coating provides additional protection against corrosion in most exterior applications.

Flat Wafer Head Streaker® - Exterior

High-Density Board, Cement Board to
Light-Gauge Steel or Wood



Standard
Corrosion
Test Results

Finish	Test	Standard/Protocol	Results
GrabberGard®	Salt Spray	ASTM B117	1,000 hrs., no red rust

Note: Salt Spray Testing (SST) results are not intended to predict corrosion in real-world environments. The ASTM B117 standard for SST is recognized industry-wide as an effective tool for comparing different metals and different metal coatings in a tightly controlled, highly corrosive environment for specific periods of time. For more information about corrosion resistance, see the Grabber Guide to Corrosion Resistance for Fasteners.

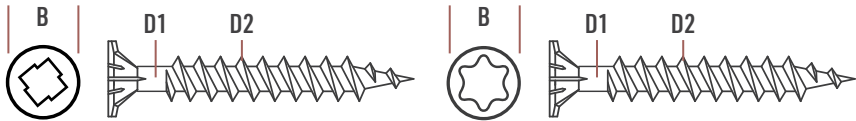
Pull-Out Test
Data¹

Screw Gauge	TPI²	Steel Gauge	Design Thickness	Tension	Shear
#8	15	25	0.0188 in.	39 lbs.	66 lbs.
		20	0.0346 in.	72 lbs.	164 lbs.

¹Test data values reported are allowable as determined by calculations and industry established test criteria, such as ICC-ES Acceptance Criteria and ASTM test standards. Please contact Grabber for detailed information about testing performed for specific products or if ultimate values are needed.

Sheet Steel
Gauges

Gauge No.	Design Thickness	Millimeter Equivalent
25	0.0188 in.	0.4775 mm
20	0.0346 in.	0.8788 mm



Product
Dimensions

Screw Size	B Head Diameter	Recess	D1 Minor Diameter	D2 Major Diameter	TPI²
#8	.372 in.	#2 LOX®	.114 in.	.164 in.	15
	.372 in.	T25 Star	.114 in.	.164 in.	15

²TPI stands for Threads Per Inch. This is a count of the number of threads per inch measured along the length of a fastener.

Ordering Information and Product Options

Item No.	Size	Recess	Head Diameter	TPI	Quantity	Weight	Special Features
GrabberGard® Gray							
GHS8114LG	8 x 1 1/4 in.	#2 LOX®	.372 in.	15	5,000	28 lb.	Collated
GHS8158LG	8 x 1 5/8 in.	#2 LOX®	.372 in.	15	4,000	27 lb.	
GHS8238LG	8 x 2 3/8 in.	#2 LOX®	.372 in.	15	2,000	31 lb.	
CGHS8114LG	8 x 1 1/4 in.	#2 LOX®	.372 in.	15	1,000	5 lb.	
CGHS8158LG	8 x 1 5/8 in.	#2 LOX®	.372 in.	15	1,000	5 lb.	
CGHS8238LG	8 x 2 3/8 in.	#2 LOX®	.372 in.	15	1,000	5 lb.	
CGHS8158TG	8 x 1 5/8 in.	T25 Star	.372 in.	15	1,000	5 lb.	

Note: Product availability is subject to change without prior notice and the availability of products may differ from what is printed in literature and displayed on our website. The items listed are bulk size. Most are also available in smaller package sizes such as 5 lb. and 1 lb. Contact your local Grabber Branch or GrabberPro for more information.

Flat Wafer Head Streaker® – Exterior
PS1035 USA-ENG/Rev. 02-25

GRABBER CONSTRUCTION PRODUCTS, INC.
5255 W 11000 N., STE 100
HIGHLAND, UT 84003

(800) 477-8876 | GrabberPro.com

SAFETY FIRST: Wear appropriate personal protective equipment. Read applicable SDS and literature before handling and installation.

TECHNICAL INFORMATION: Technical information contained herein is furnished without charge or obligation and is given and accepted at the recipient's sole risk. Because conditions of use may vary and are beyond our control, Grabber Construction Products makes no representation about, and is not responsible or liable for, the accuracy or reliability of data associated with uses of any product described herein. Grabber Construction Products reserves the right to modify this document without prior notice.

© 2025 Grabber Construction Products, Inc. | All rights reserved | Printed in U.S.A.
The trademarks Grabber, GrabberGard, LOX, Streaker, and Stylized G on Grabber Fasteners, are trademarks of Grabber Construction Products, Inc.

