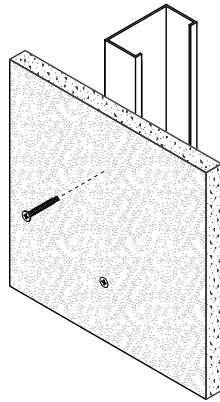
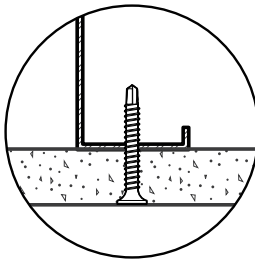


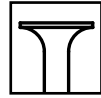
## Bugle Head Driller - Exterior

Gypsum Board, Sheathing, and Insulation Board to Heavy-Gauge Steel

**GRABBER®**  
CONSTRUCTION PRODUCTS



Phillips



Bugle Head



Drill Point

**Description** Attaches gypsum board, sheathing, and insulation board to heavy-gauge steel.

### Specifications

**Size | Gauge:** #6 to #10  
**Length:** 1 1/4 in. to 5 in.  
**Head Type:** Bugle Head  
**Recess Type:** #2 Phillips  
**Thread Type:** Fine, Single Lead  
**Finish:** GrabberGard®

**Quality Assurance:** Grabber® fasteners are manufactured in ISO 9001 and ISO 14001 certified and approved factories.

**LEED Reporting:** The post-consumer recycled steel content is 25%.

**Compliance:** The fasteners comply with ASTM C954 and C1513 performance requirements.

### Applications

- 3/8 in., 1/2 in., and 5/8 in. single-layer gypsum board to heavy-gauge steel studs
- 1/2 in. and 5/8 in. double-layer gypsum board to heavy-gauge steel studs

### Installation

- Use a standard screw gun with a depth-sensitive nose piece. Suggested screw gun specification for optimal performance: sizes #6 to #10, up to 2,500 RPM.
- Because of significantly higher torque output, care and caution should be exercised when using an impact driver; otherwise, screw failure or spin-out may occur.
- The bugle head is fully seated when it is just beneath the surface of the gypsum board.
- The fastener must penetrate beyond the steel three full thread pitches.
- Overdriving may result in failure of the fastener.

### Features

- Grabber's #2 Phillips is a precision recess designed for better bit engagement, resulting in less wobble or strip-out.
- Self-tapping drill point is designed for penetration into heavy-gauge steel.
- The bugle head creates a smooth, professional finish.
- Consistently formed extra-sharp drill point starts and drills easily into heavy-gauge steel.
- GrabberGard® exterior-grade coating provides additional protection against corrosion in most exterior applications.

# Bugle Head Driller - Exterior

## Gypsum Board, Sheathing, and Insulation Board to Heavy-Gauge Steel

**GRABBER®**  
CONSTRUCTION PRODUCTS

Heavy-Gauge Steel

Gypsum Board, Sheathing, and Insulation Board to Heavy-Gauge Steel

### Standard Corrosion Test Results

Finish	Test	Standard/Protocol	Results
GrabberGard®	Salt Spray	ASTM B117	1,000 hrs., no red rust

Note: Salt Spray Testing (SST) results are not intended to predict corrosion in real-world environments. The ASTM B117 standard for SST is recognized industry-wide as an effective tool for comparing different metals and different metal coatings in a tightly controlled, highly corrosive environment for specific periods of time. For more information about corrosion resistance, see the Grabber Guide to Corrosion Resistance for Fasteners.

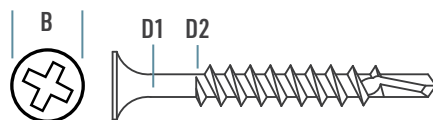
### Pull-Out Test Data¹

Screw Gauge	TPI²	Steel Gauge	Design Thickness	Tension	Shear
#6	20	18	0.0451 in.	79 lbs.	224 lbs.
		16	0.0566 in.	144 lbs.	315 lbs.
		14	0.0713 in.	181 lbs.	446 lbs.
		12	0.1017 in.	258 lbs.	759 lbs.
		10	0.1242 in.	315 lbs.	1,001 lbs.
#8	18	18	0.0451 in.	94 lbs.	244 lbs.
		16	0.0566 in.	171 lbs.	344 lbs.
		14	0.0713 in.	215 lbs.	486 lbs.
		12	0.1017 in.	307 lbs.	827 lbs.
		10	0.1242 in.	375 lbs.	1,114 lbs.
#10	16	18	0.0451 in.	109 lbs.	263 lbs.
		16	0.0566 in.	198 lbs.	370 lbs.
		14	0.0713 in.	249 lbs.	523 lbs.
		12	0.1017 in.	356 lbs.	891 lbs.
		10	0.1242 in.	434 lbs.	1,199 lbs.

¹Test data values reported are allowable as determined by calculations and industry established test criteria, such as ICC-ES Acceptance Criteria and ASTM test standards. Please contact Grabber for detailed information about testing performed for specific products or if ultimate values are needed.

### Sheet Steel Gauges

Gauge No.	Design Thickness	Millimeter Equivalent
25	0.0188 in.	0.4775 mm
20	0.0346 in.	0.8788 mm
18	0.0451 in.	1.1455 mm
16	0.0566 in.	1.4376 mm
14	0.0713 in.	1.8110 mm
12	0.1017 in.	2.5832 mm
10	0.1242 in.	3.1547 mm



### Product Dimensions

Screw Gauge	B Head Dia.	Recess	D1 Minor Dia.	D2 Major Dia.	TPI²
#6	0.321 in.	#2 Phillips	0.098 in.	0.138 in.	20
#8	0.321 in.	#2 Phillips	0.116 in.	0.164 in.	18
#10	0.343 in.	#2 Phillips	0.132 in.	0.190 in.	16

²TPI stands for Threads Per Inch. This is a count of the number of threads per inch measured along the length of a fastener.

# Bugle Head Driller - Exterior

Gypsum Board, Sheathing, and  
Insulation Board to Heavy-Gauge Steel



## Ordering Information and Product Options

Item No.	Size	Recess	Head Diameter	TPI	Quantity	Weight	Special Features
GrabberGard® Gray							
14RG	6 x 1 1/4 in.	#2 Phillips	0.325 in.	20	8,000	33 lb.	Fully threaded
15RG	6 x 1 5/8 in.	#2 Phillips	0.325 in.	20	5,000	26 lb.	
16RG	6 x 1 7/8 in.	#2 Phillips	0.325 in.	20	4,000	24 lb.	
30LRG	8 x 3 in.	#2 Phillips	0.325 in.	18	2,000	25 lb.	
30LRG8	8 x 3 in.	#2 Phillips	0.325 in.	18	2,000	24 lb.	
30MRG	8 x 2 5/8 in.	#2 Phillips	0.325 in.	18	2,000	22 lb.	
30MRG8	8 x 2 5/8 in.	#2 Phillips	0.325 in.	18	2,000	22 lb.	
30SRG	8 x 2 3/8 in.	#2 Phillips	0.325 in.	18	3,000	30 lb.	
14RG8F	8 x 1 1/4 in.	#2 Phillips	0.325 in.	18	1,000	41 lb.	Fully threaded
16RG8F	8 x 1 7/8 in.	#2 Phillips	0.325 in.	18	1,000	31 lb.	
B10350SDRG	10 x 3 1/2 in.	#2 Phillips	0.343 in.	16	1,000	19 lb.	
B10400SDRG	10 x 4 in.	#2 Phillips	0.343 in.	16	1,000	21 lb.	
B10500SDRG	10 x 5 in.	#2 Phillips	0.343 in.	16	1,000	26 lb.	
C14RG	6 x 1 1/4 in.	#2 Phillips	0.325 in.	20	1,000	5 lb.	Collated, Fully threaded
CP14RG8	8 x 1 1/4 in.	#2 Phillips	0.325 in.	18	1,000	5 lb.	
C16RG	6 x 1 7/8 in.	#2 Phillips	0.325 in.	20	1,000	5 lb.	
C14RG8F	8 x 1 1/4 in.	#2 Phillips	0.325 in.	18	1,000	5 lb.	
C15GG8P	8 x 1 5/8 in.	#2 Phillips	0.325 in.	18	1,000	5 lb.	

Note: Product availability is subject to change without prior notice and the availability of products may differ from what is printed in literature and displayed on our website. The items listed are bulk size. Most are also available in smaller package sizes such as 5 lb. and 1 lb. Contact your local Grabber Branch or GrabberPro for more information.

Bugle Head Driller - Exterior  
PS1040 USA-ENG/Rev. 02-25

GRABBER CONSTRUCTION PRODUCTS, INC.  
5255 W 11000 N., STE 100  
HIGHLAND, UT 84003

(800) 477-8876 | GrabberPro.com

**SAFETY FIRST:** Wear appropriate personal protective equipment. Read applicable SDS and literature before handling and installation.

**TECHNICAL INFORMATION:** Technical information contained herein is furnished without charge or obligation and is given and accepted at the recipient's sole risk. Because conditions of use may vary and are beyond our control, Grabber Construction Products makes no representation about, and is not responsible or liable for, the accuracy or reliability of data associated with uses of any product described herein. Grabber Construction Products reserves the right to modify this document without prior notice.

© 2025 Grabber Construction Products, Inc. | All rights reserved | Printed in U.S.A.  
The trademarks Grabber, GrabberGard, and Stylized G on Grabber Fasteners, are trademarks of Grabber Construction Products, Inc.

