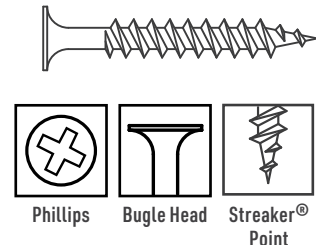
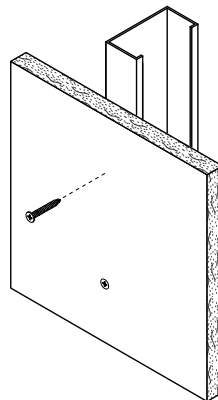
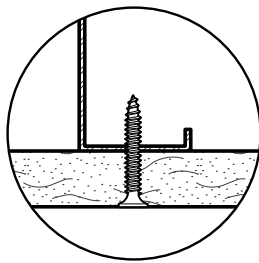


Bugle Head, Fine Thread Drywall Screws - Exterior

Gypsum Board, Sheathing, and Insulation Board to Light-Gauge Steel

GRABBER®
CONSTRUCTION PRODUCTS



Description Attaches gypsum board, sheathing, and insulation board to light-gauge steel or wood.

Specifications

Size | Gauge: #6 to #10
Length: 1 in. to 6 in.
Head Type: Bugle
Recess Type: #2 Phillips
Thread Type: Fine, Single Lead
Finish: GrabberGard®

Quality Assurance: Grabber® fasteners are manufactured in ISO 9001 and ISO 14001 certified and approved factories.
LEED Reporting: The post-consumer recycled steel content is 25%.
Compliance: The fasteners comply with ASTM C1002 performance requirements.

Applications

- 3/8 in., 1/2 in., and 5/8 in. single-layer gypsum board to light-gauge steel studs
- 1/2 in. and 5/8 in. double-layer gypsum board to light-gauge steel

- Steel or wood cabinets through single-layer gypsum board to light-gauge steel studs or wood
- OSB or plywood to light-gauge steel or wood

Installation

- Use a standard screw gun with a depth-sensitive nose piece. Suggested screw gun specification for optimal performance: sizes #6 to #10, up to 4,000 RPM.
- For gypsum board, the bugle head is fully seated when the screw is below the surface of the wallboard, in accordance with Section 7.2.2 of ASTM C1002.

- For wood-to-wood connections, minimum penetration should be 1/2 in., in accordance with AWC-NDS for wood construction.
- The fastener must penetrate beyond the steel three full thread pitches.
- Overdriving may result in failure of the fastener or failure of the gypsum board.

Features

- Fine thread, 15 threads per inch, is ideal for light-gauge steel applications.
- Extra-sharp, single lead 23° Streaker® point is designed to penetrate light-gauge steel quickly and easily.
- Grabber's #2 Phillips recess is a precision recess designed for better bit engagement, resulting in less wobble or strip-out.

- The bugle head is designed to seat quickly and easily into gypsum board, creating a flush surface and easy finishing.
- GrabberGard® exterior-grade coating provides additional protection against corrosion in most exterior applications.

Bugle Head, Fine Thread Drywall Screws - Exterior

Gypsum Board, Sheathing, and Insulation Board to Light-Gauge Steel



Standard Corrosion Test Results

Finish	Test	Standard/Protocol	Results
GrabberGard®	Salt Spray	ASTM B117	1,000 hrs., no red rust

Note: Salt Spray Testing (SST) results are not intended to predict corrosion in real-world environments. The ASTM B117 standard for SST is recognized industry-wide as an effective tool for comparing different metals and different metal coatings in a tightly controlled, highly corrosive environment for specific periods of time. For more information about corrosion resistance, see the Grabber Guide to Corrosion Resistance for Fasteners.

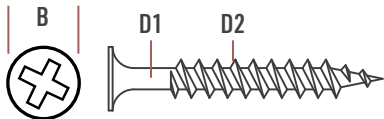
Pull-Out Test Data¹

Screw Gauge	TPI²	Steel Gauge	Design Thickness	Tension	Shear
#6	15	25	0.0188 in.	33 lbs.	60 lbs.
		20	0.0346 in.	61 lbs.	151 lbs.
#8	15	25	0.0188 in.	39 lbs.	66 lbs.
		20	0.0346 in.	72 lbs.	164 lbs.
#10	12	25	0.0188 in.	46 lbs.	71 lbs.
		20	0.0346 in.	84 lbs.	177 lbs.

¹Test data values reported are allowable as determined by calculations and industry established test criteria, such as ICC-ES Acceptance Criteria and ASTM test standards. Please contact Grabber for detailed information about testing performed for specific products or if ultimate values are needed.

Sheet Steel Gauges

Gauge No.	Design Thickness	Millimeter Equivalent
25	0.0188 in.	0.4775 mm
20	0.0346 in.	0.8788 mm



Product Dimensions

Screw Gauge	B Head Dia.	Recess	D1 Minor Dia.	D2 Major Dia.	TPI²
#6	0.325 in.	#2 Phillips	0.091 in.	0.138 in.	15
#8	0.321 in.	#2 Phillips	0.114 in.	0.164 in.	15
#10	0.343 in.	#2 Phillips	0.130 in.	0.190 in.	12

²TPI stands for Threads Per Inch. This is a count of the number of threads per inch measured along the length of a fastener.

Bugle Head, Fine Thread Drywall Screws - Exterior

Gypsum Board, Sheathing, and Insulation Board to Light-Gauge Steel



Light-Gauge Steel

Gypsum Board, Sheathing, and Insulation Board to Light-Gauge Steel

Ordering Information and Product Options

Item No.	Size	Recess	Head Diameter	TPI	Quantity	Weight	Special Features
GrabberGard® Gray							
168RG	6 x 1 in.	#2 Phillips	0.325 in.	15	10,000	32 lb.	
268RG	6 x 1 1/8 in.	#2 Phillips	0.325 in.	15	10,000	34 lb.	
368RG	6 x 1 1/4 in.	#2 Phillips	0.325 in.	15	8,000	31 lb.	
368RG8	8 x 1 1/4 in.	#2 Phillips	0.325 in.	15	8,000	40 lb.	
468RG	6 x 1 5/8 in.	#2 Phillips	0.325 in.	15	5,000	24 lb.	
768RG	6 x 2 in.	#2 Phillips	0.325 in.	15	5,000	21 lb.	
1268RG	10 x 3 1/2 in.	#2 Phillips	0.343 in.	12	1,000	19 lb.	
1368RG	10 x 4 in.	#2 Phillips	0.343 in.	12	1,000	22 lb.	
1568RG	10 x 5 in.	#2 Phillips	0.343 in.	12	1,000	26 lb.	
1768RG	10 x 6 in.	#2 Phillips	0.343 in.	12	1,000	32 lb.	
C368RG	6 x 1 1/4 in.	#2 Phillips	0.325 in.	15	1,000	5 lb.	
C368RG8	8 x 1 1/4 in.	#2 Phillips	0.325 in.	15	1,000	5 lb.	
							Collated

Note: Product availability is subject to change without prior notice and the availability of products may differ from what is printed in literature and displayed on our website. The items listed are bulk size. Most are also available in smaller package sizes such as 5 lb. and 1 lb. Contact your local Grabber Branch or GrabberPro for more information.

Bugle Head, Fine Thread Drywall Screws - Exterior
PS1052 USA-ENG/Rev. 02-25

GRABBER CONSTRUCTION PRODUCTS, INC.
5255 W 11000 N., STE 100
HIGHLAND, UT 84003

(800) 477-8876 | GrabberPro.com

SAFETY FIRST: Wear appropriate personal protective equipment. Read applicable SDS and literature before handling and installation.

TECHNICAL INFORMATION: Technical information contained herein is furnished without charge or obligation and is given and accepted at the recipient's sole risk. Because conditions of use may vary and are beyond our control, Grabber Construction Products makes no representation about, and is not responsible or liable for, the accuracy or reliability of data associated with uses of any product described herein. Grabber Construction Products reserves the right to modify this document without prior notice.

© 2025 Grabber Construction Products, Inc. | All rights reserved | Printed in U.S.A.
The trademarks Grabber, GrabberGard, Streaker, and Stylized G on Grabber Fasteners, are trademarks of Grabber Construction Products, Inc.

