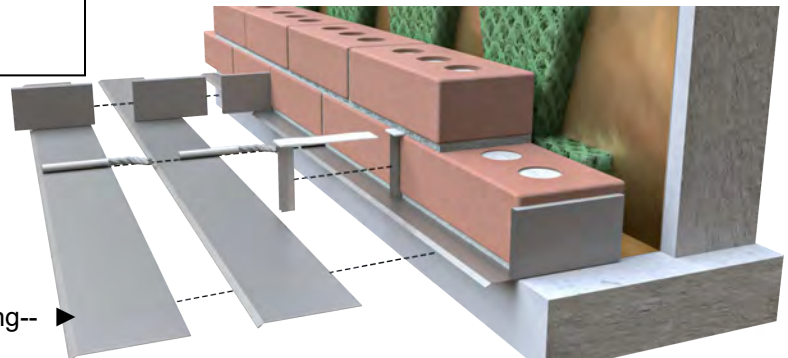
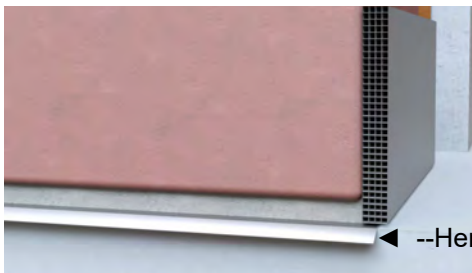
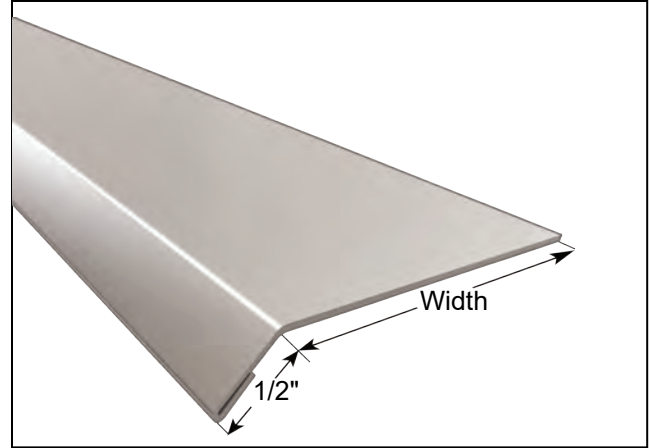


Description: Used as a flashing material to prevent water damage. Drip-edge is installed below the bottom brick course. Drip-edge is folded back to prevent a sharp edge on the exterior wall.

Standard Size: 26 gauge Stainless Steel 3" wide with a 45° 1/2" drip-edge hemmed back 3/8". 8 foot lengths.

Custom sizes and lengths are available. Specify overall length (10 ft maximum), gauge and width of flat portion.

The bottom course of brick should have weep vents to drain moisture out of the cavity. See Heckmann products #85 Cell Vents and #330 Weepholes .



STANDARD

SPECIAL

Standards:

Thickness: 26 gage 3" wide 8 ft long

Finish: Stainless type 304

Specials:

26 gage

Length (ft) : _____ Width: _____

Finish: Type 304 Stainless Steel

Quantity (lin ft): _____

Material Specifications

Stainless Steel: Sheet metal anchors and ties:
 ASTM A 167, ASTM A 666, ASTM A
 240/A240M AISI Type 304.