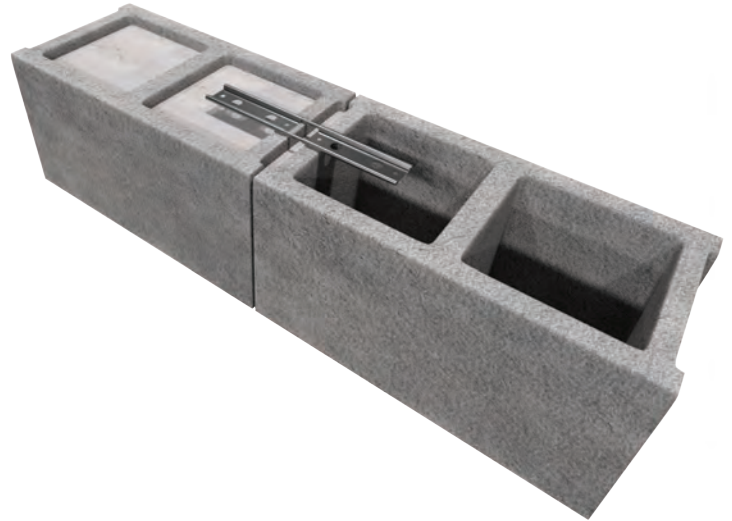
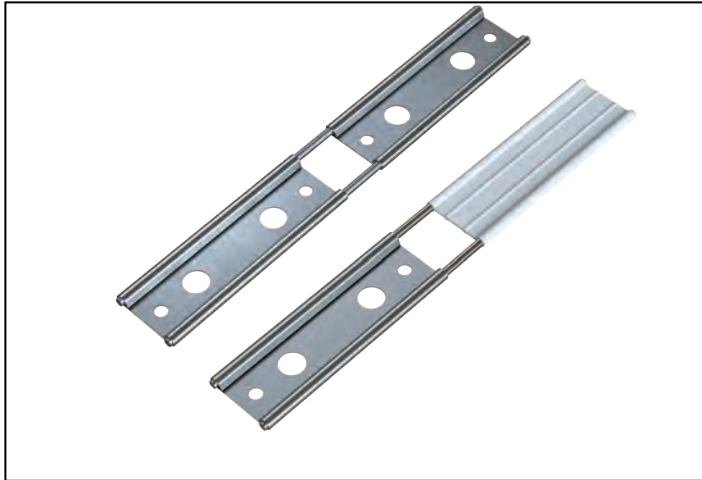


## Submittal Sheet

### #353 Control Joint Anchor

Allows expansion and contraction in a masonry wall. Resists out-of-plane shear forces while allowing for in-plane movement of the masonry.



#### Standards:

Thickness: 22 gage

Overall Length: 10" Width: 1 ½"

Finish: ☐ Mill Galvanized

☐ Stainless Steel      Stainless Steel and Plastic

Quantity: \_\_\_\_\_

#### Material Specifications

**Stainless Steel:** Sheet metal anchors and ties: ASTM A 167, ASTM A 666, ASTM A 240/A240M AISI Type 304.

Wire ties and anchors: ASTM A 580 AISI Type 304

**Mill Galvanized:** Sheet metal anchors and ties: ASTM A 653 G60

Wire: ASTM A 641 (0.1 oz/ ft<sup>2</sup>.)